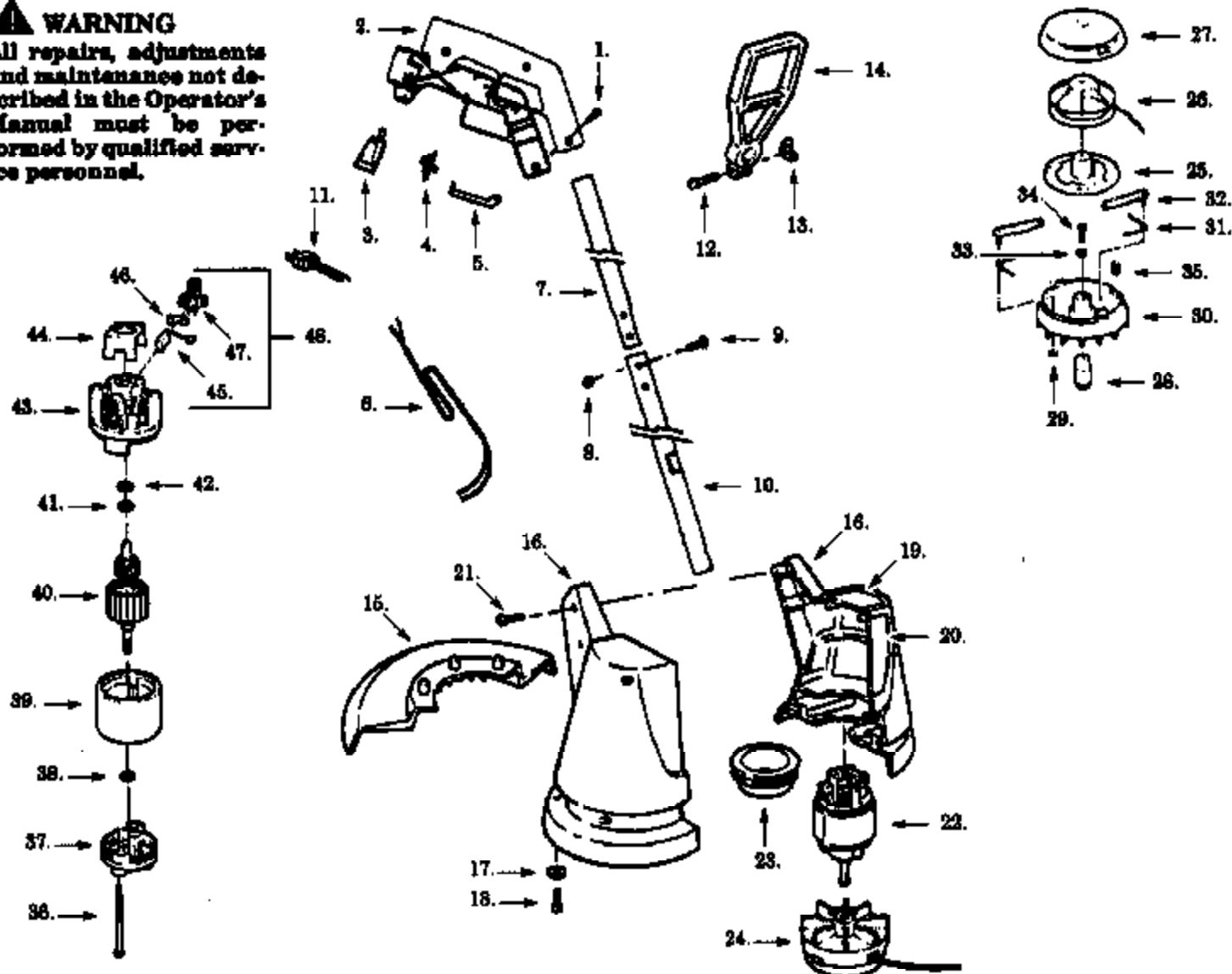


**WARNING**

All repairs, adjustments and maintenance not described in the Operator's Manual must be performed by qualified service personnel.



| Ref # | Part Number | Qty | Description                                |
|-------|-------------|-----|--|
| 1     | 530352036   |     | Screw                                      |
| 2     | 530351822   |     | Handle Set                                 |
| 3     | 530347653   |     | Cord Retainer                              |
| 4     | 530347897   |     | On/Off Switch                              |
| 5     | 530351826   |     | Trigger Switch                             |
| 6     | 534014593   |     | Harness Ass'y.                             |
| 7     | 534500111   |     | Upper Tube                                 |
| 8     | 530015653   |     | Nut  |
| 9     | 530346034   |     | Screw                                      |
| 10    | 534014600   |     | Lower Tube w/ Decal                        |
| 11    | 534014597   |     | Plug Ass'y.                                |
| 12    | 530625509   |     | Screw                                      |
| 13    | 530400013   |     | Wing Nut                                   |
| 14    | 534036733   |     | Assist Handle                              |
| 15    | 534379665   |     | Guard & Blade Assy.                        |
| 16    | 530400787   |     | Housing Set                                |
| 17    | 530015992   |     | Washer                                     |
| 18    | 534193800   |     | Screw                                      |
| 19    | 530400753   |     | Housing Label (Not a serviceable part)     |
| 20    | 530400754   |     | Hsg. Front Label (Not a serviceable part)  |
| 21    | 534222400   |     | Screw                                      |
| 22    | 534768300   |     | Motor Ass'y.                               |
| 23    | 534487245   |     | Air Baffle                                 |
| 24    | 534907306   |     | Cutting Head Ass'y.                        |
| 25    | 534839100   |     | Cam  |
| 26    | 534907904   |     | Spool & Line                               |
| 27    | 534899400   |     | Cover                                      |
| 28    | 534900301   |     | Drive Adapter                              |
| 29    | 534400701   |     | Push Nut                                   |
| 30    | 534980301   |     | Housing Head                               |
| 31    | 534908500   |     | Spring                                     |
| 32    | 534899200   |     | Arm  |
| 33    | 534908700   |     | Washer                                     |
| 34    | 534136401   |     | Screw                                      |
| 35    | 534900200   |     | Line Shield                                |
| 36    | 534228703   |     | Screw                                      |
| 37    | 534207101   |     | Endbell Ass'y. Drive                       |
| 38    | 534228800   |     | Washer                                     |
| 39    | 534227004   |     | Field Ass'y.                               |
| 40    | 534767700   |     | Armature Ass'y.                            |
| 41    | 534228802   |     | Washer                                     |
| 42    | 534238903   |     | Washer                                     |
| 43    | 534227501   |     | Endbell Ass'y. Brush                       |
| 44    | 534226000   |     | Insulator                                  |
| 45    | 534227800   |     | Carbon Brush                               |
| 46    | 534228000   |     | Brush Spring                               |
| 47    | 534227700   |     | Brush Holder                               |
| 48    | 534450400   |     | Brush Kit (Incl. 45,46,47)                 |
|       | 530400755   |     | Operator Manual Not Shown.                 |
|       | 530014705   |     | Carton Contents Bag Not Shown.             |
|       | 530061596   |     | Carton (Not a serviceable part) Not Shown. |

TK15E Electric Trimmer Page 2 of 2  
TRIMMER ASSEMBLY