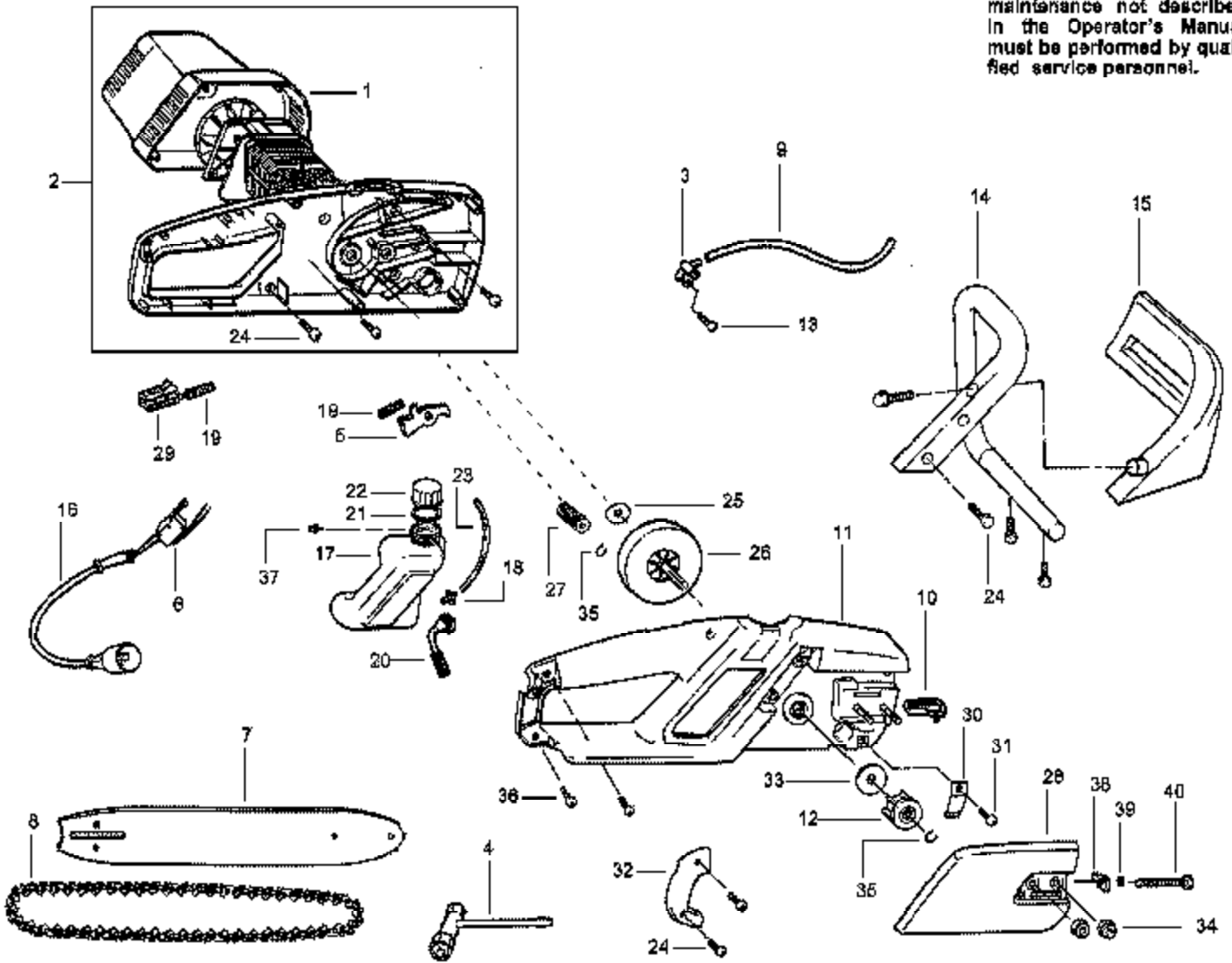


**⚠ WARNING**  
All repairs, adjustments and maintenance not described in the Operator's Manual must be performed by qualified service personnel.



Ref #	Part Number	Qty	Description
1	530403211		Motor Cover
2	530403712		Housing/Motor Ass'y. (Incls. 1 & 24)
3	530403311		Oil Pump Ass'y.
4	530031163		Bar Wrench
5	530053181		Trigger
6	530402879		Switch-Momentary
7	952044759		Bar-16"
8	952051470		Chain-16"
9	530403394		Outlet Line
10	530053251		Insert Bar Pad
11	530053061		Housing Cover
12	530053053		Sprocket (3/8 Pitch)
13	530015775		Screw
14	530403237		Front Handle
15	530403313		Handguard
16	530403250		Cord Set
17	530053248		Oil Tank Ass'y. (Incls.18, 20-23 & 37)
18	530053270		Oil Pickup Fitting
19	530042091		Spring-Trigger
20	530047663		Oil Pickup Ass'y.
21	530019143		O-Ring (Oil Cap)
22	530053072		Oil Cap
23	530403393		Inlet Line
24	530015814		Screw
25	530016278		Washer-Thrust
26	530053048		Gear Drive
27	530053067		Pinion
28	530053153		Bar Clamp
29	530053179		Lockout Button
30	530029850		Chain Catcher
31	530015770		Screw
32	530403217		Cover Access
33	530016262		Washer-Sprocket
34	530015917		Nut-Bar Mounting
35	530042090		Ring-Retainer
36	530015775		Screw
37	530026119		Check Valve (Duckbill)
38	530053068		Pin-Bar Adjust
39	530038593		Retainer-Bar Adjust
40	530016265		Screw-Bar Adjust
	530403514		Operator Manual Not Shown
	530029543		Scabbard Not Shown
	530053555		Decal-Bar Clamp (Not a serviceable part) Not Shown
	530053853		Decal-Warning (Not a serviceable part) Not Shown

ES300 Electric Saw Page 2 of 2

Chain Saw Assembly