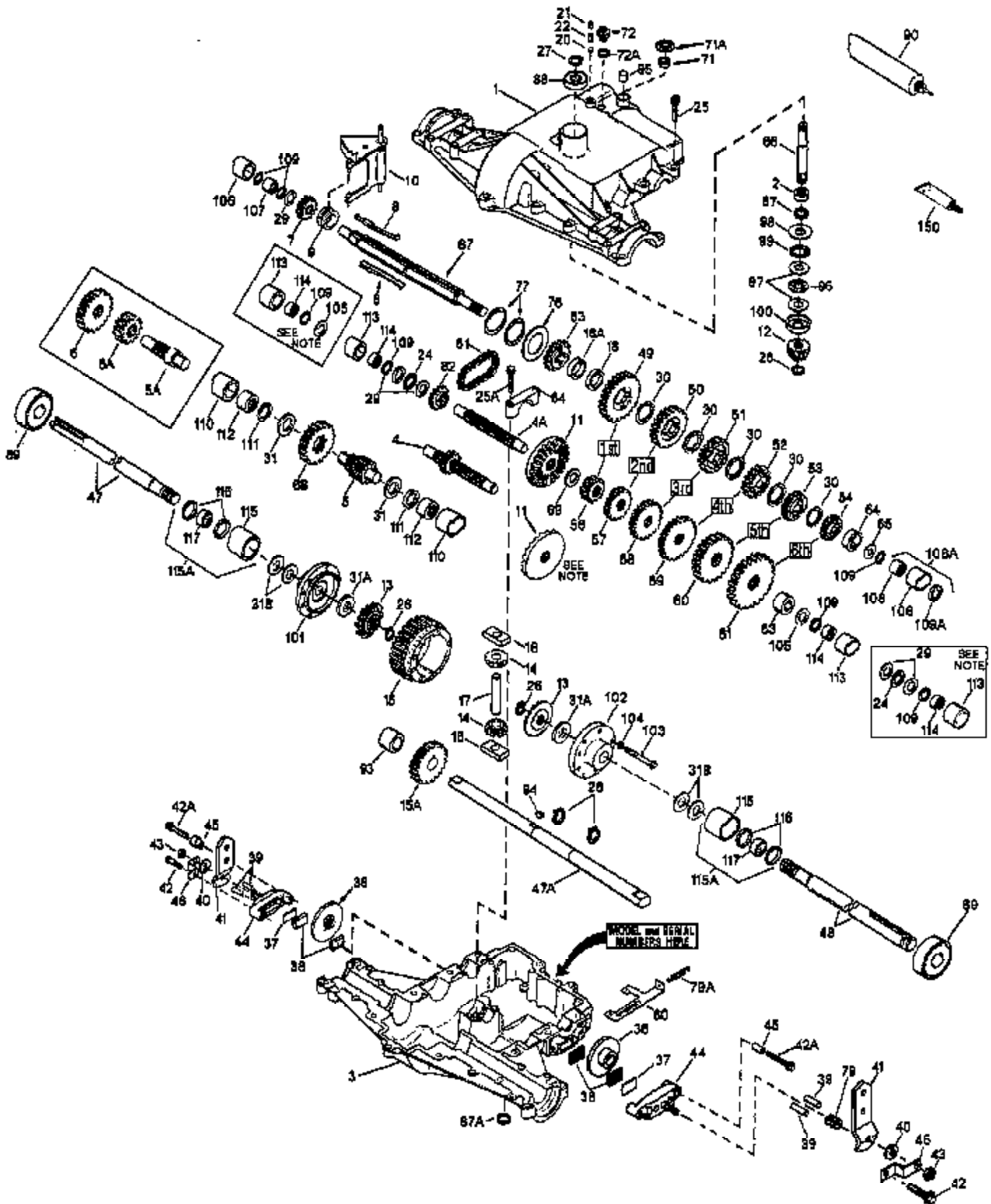


ILLUSTRATION SHOWS TYPICAL PARTS ONLY. ORDER BY PART NUMBER. PARTS NOT LISTED ARE SUPPLIED BY OEM.



Ref #	Part Number	Qty	Description
1	772098A		Transaxle Cover
2	780155		Needle Bearing
3	770088		Transaxle Case
4A	776276		Countershaft
5	776275		Output Shaft (9 teeth)
6B	778247		Output Gear (35 teeth steel)
7	778253		Spur Gear (15 teeth steel)
8	792123A		Key
9	784216		Shift Collar
10	784342		Shift Rod & Fork
11	778246		Bevel Gear (33 teeth-steel) NOTE:Models 820-006 & 820-006A require a reversed bevel gear (Ref. 11). Therefore, placement of the bearing (Ref. 24) and washers (Ref. Nos. 29 & 105) should be as shown in the boxed insets on illustration page.
12	778245		Input Bevel Pinion (13 teeth-steel)
13	778198		Bevel Gear (steel)
14	778197		Differential Bevel Pinion (steel)
15	778248		Ring Gear (31 teeth)
16	786027		Drive Block
17	786019		Drive Pin
18A	786121		Neutral Spacer (.350/.340 thick)
18	786122		Neutral Spacer (.276/.268 thick)
20	792077A		Steel Ball
21	792078		Set Screw, 3/8-16 x 3/8"
22	792079		Spring
24	780071		Thrust Bearing NOTE: Models 820-006 & 820-006A require a reversed bevel gear (Ref. 11). Therefore, placement of the bearing (Ref. 24) and washers (Ref. Nos. 29 & 105) should be as shown in the boxed insets on illustration page.
25	792129A		Screw, 5/16-18 x 1-1/4"
25A	792073A		Screw, 1/4-20 x 1-1/4"
26	792018		Snap Ring
27	792018		Snap Ring
28	788040		Retaining Ring
29	780072		Thrust Washer NOTE: Models 820-006 & 820-006A require a reversed bevel gear (Ref. 11). Therefore, placement of the bearing (Ref. 24) and washers (Ref. Nos. 29 & 105) should be as shown in the boxed insets on illustration page.
30	780108		Thrust Washer
31A	780107		Washer
31B	780042		Thrust Washer
31	780128		Thrust Washer
32	788042		Oil Seal
47	774812		Axle (9-7/32" long)
48	774813		Axle (13-3/32" long)
49	778206A		Spur Gear (35 teeth-steel)
50	778205A		Spur Gear (30 teeth-steel)
51	778204A		Spur Gear (25 teeth-steel)
52	778203A		Spur Gear (22 teeth-steel)
53	778273		Spur Gear (19 teeth-steel)
56	778199		Spur Gear (15 teeth-steel)
57	778200		Spur Gear (20 teeth-steel)
58	778201		Spur Gear (25 teeth-steel)

820-820-006 Peerless Page 2 of 3
placement of the bearing (Ref. 24) and washers (Ref. Nos. 29 & 105) should be as shown in the boxed insets on illustration page.

Ref #	Part Number	Qty	Description
59	778202		Spur Gear (28 teeth-steel)
60	778208		Spur Gear (31 teeth-steel)
63	786071		Countershaft Spacer
64	786072		Output Shaft Spacer
65	780109		Thrust Washer
66	776274		Input Shaft (3.866" long)
67	776273		Brake Shaft (4 keyed)
69	780051		Thrust Washer
72	792074		Threaded Plug, 9/16-18
79	792144		Brake Spring
81	786081		Roller Chain (No. 41 chain, 24 links)
82	786082		Sprocket (9 teeth)
83	786123	820-820-006	Sprocket (18 teeth)
84	786131	Peerless	Bearing Cap
88	780119		Ball Bearing
89	780050		Ball Bearing
90	788067B		Grease (32 oz. bottle Bentonite greas e)
96	780084		Thrust Bearing
97	780154		Thrust Race
101	774833		Differential Carrier (threaded holes)
102	774834		Differential Carrier
103	792020		Screw, 1/4-20 x 2-1/4"
104	792006		Lockwasher, 1/4"
105	780153		Washer NOTE: Models 820-006 & 820-006A require a reversed bevel gear (Ref. 11). Therefore, placement of the bearing (Ref. 24) and washers (Ref. Nos. 29 & 105) should be as shown in the boxed insets on illustration page.
106	786129		Sleeve
107	780150		Needle Bearing
108	780152		Needle Bearing (capped)
109	792001		"O" Ring
110	786127		Sleeve
111	788071		Square Cut Ring
112	780168		Needle Bearing (capped)
113	786128		Sleeve
114	780151		Needle Bearing (capped)
115	786130		Sleeve
116	788070		Square Cut Ring
117	780031		Needle Bearing
150	510334		Gasket Eliminator (Loctite No. 515)