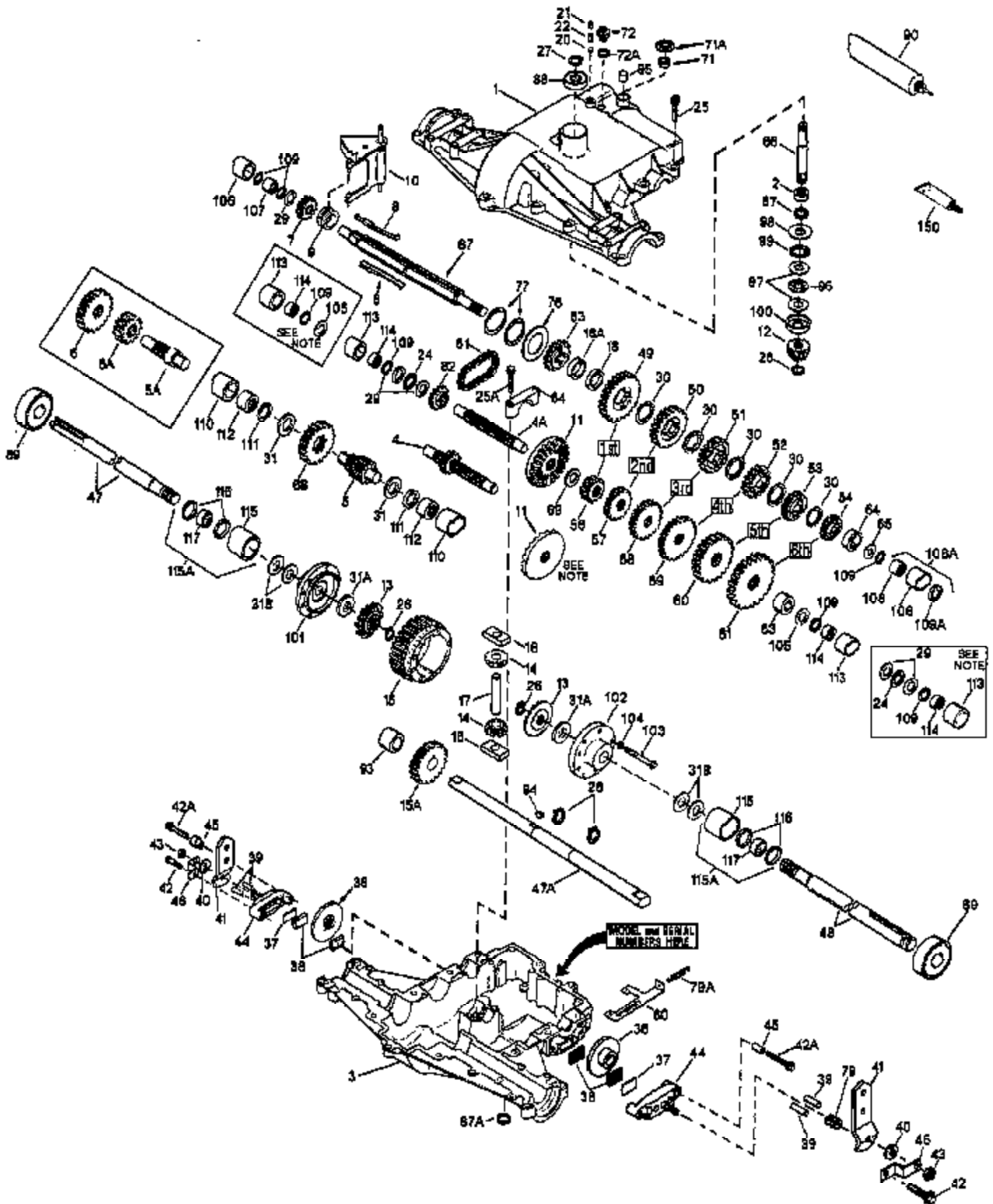


ILLUSTRATION SHOWS TYPICAL PARTS ONLY. ORDER BY PART NUMBER. PARTS NOT LISTED ARE SUPPLIED BY OEM.



| Ref # | Part Number | Qty | Description |
|-------|-------------|-----------------------|---|
| 1 | 772098A | | Transaxle Cover |
| 2 | 780155 | | Needle Bearing |
| 3 | 770088 | | Transaxle Case |
| 4A | 776291 | | Countershaft (w/9-tooth gear) |
| 5 | 776275 | | Output Shaft (9 teeth) |
| 6 | 778247 | | Output Gear (35 teeth-steel) |
| 7 | 778253 | | Spur Gear (15 teeth-steel) |
| 8 | 792123A | | Key |
| 9 | 784216 | | Shift Collar |
| 10 | 784342 | | Shift Rod & Fork |
| 11 | 778246 | | Bevel Gear (33 teeth-steel) (NOTE: This model requires that the bevel gear be in a reversed position, therefore placement of the bearing 780071 and washers 780072 & 780153 should be as shown in the boxed inset on the illustration.) |
| | | 820-820-001A Peerless | |
| 12 | 778245 | | Input Bevel Pinion (13 teeth-steel) |
| 13 | 778198 | | Bevel Gear (steel) |
| 14 | 778197 | | Differential Bevel Pinion (steel) |
| 15 | 778248 | | Ring Gear (31 teeth) |
| 16 | 786027 | | Drive Block |
| 17 | 786019 | | Drive Pin |
| 18 | 786122 | | Neutral Spacer (.276/.268 thick) |
| 18A | 786121 | | Neutral Spacer (.350/.340 thick) |
| 20 | 792077A | | Steel Ball |
| 21 | 792078 | | Set Screw, 3/8-16 x 3/8" |
| 22 | 792079 | | Spring |
| 24 | 780071 | | Thrust Bearing (NOTE: This model requires that the bevel gear be in a reversed position, therefore placement of the bearing 780071 and washers 780072 & 780153 should be as shown in the boxed inset on the illustration.) |
| 25 | 792129A | | Screw, 5/16-18 x 1-1/4" |
| 25A | 792073A | | Screw, 1/4-20 x 1-1/4" |
| 26 | 792018 | | Snap Ring |
| 27 | 792018 | | Snap Ring |
| 28 | 788040 | | Retaining Ring |
| 29 | 780072 | | Thrust Washer (NOTE: This model requires that the bevel gear be in a reversed position, therefore placement of the bearing 780071 and washers 780072 & 780153 should be as shown in the boxed inset on the illustration.) |
| 30 | 780108 | | Thrust Washer |
| 31B | 780042 | | Thrust Washer |
| 31 | 780128 | | Thrust Washer |
| 31A | 780107 | | Washer |
| 32 | 788042 | | Oil Seal |
| 36 | 790043 | | Brake Disk |
| 37 | 790007 | | Brake Pad Plate |
| 38 | 799021 | | Brake Pad (pkg of 2) |
| 39 | 786026 | | Dowel Pin |
| 40 | 792076A | | Flat Washer |
| 41 | 790013 | | Brake Lever |
| 42 | 792073A | | Screw, 1/4-20 x 1/4" |
| 43 | 792075 | | Locknut, 5/16-24 |
| 44 | 790025 | | Brake Pad Holder |
| 46 | 786086 | | Brake Lever Bracket |
| 47 | 774832 | | Axle (12-5/16" long) |

| Ref # | Part Number | Qty | Description |
|-------|-------------|---------------------------|---|
| 48 | 774831 | | Axle (16-3/16" long) |
| 49 | 778216A | | Spur Gear (41 teeth-steel) |
| 50 | 778205A | | Spur Gear (30 teeth-steel) |
| 51 | 778204A | | Spur Gear (25 teeth-steel) |
| 52 | 778203A | | Spur Gear (22 teeth-steel) |
| 53 | 778273 | | Spur Gear (19 teeth-steel) |
| 57 | 778200 | | Spur Gear (20 teeth-steel) |
| 58 | 778201 | | Spur Gear (25 teeth-steel) |
| 59 | 778202 | | Spur Gear (28 teeth-steel) |
| 60 | 778208 | | Spur Gear (31 teeth-steel) |
| 63 | 786071 | | Countershaft Spacer |
| 64 | 786072 | | Output Shaft Spacer |
| 65 | 780109 | 820-820-001A, Page 3 of 3 | Thrust Washer (flat) |
| 66 | 776293 | Peerless | Input Shaft (3.910" long) |
| 67 | 776313 | | Brake Shaft (4 keyed) |
| 71A | 792145 | | Pushnut |
| 71 | 788069 | | Square Cut Seal |
| 72 | 792074 | | Threaded Plug, 9/16-18 |
| 79 | 792144 | | Brake Spring |
| 81 | 786062A | | Roller Chain (No. 41 chain, 22 links) |
| 82 | 786061 | | Sprocket (10 teeth) |
| 83 | 786124 | | Sprocket (14 teeth) |
| 84 | 786131 | | Bearing Cap |
| 88 | 780119 | | Ball Bearing |
| 89 | 780050 | | Ball Bearing |
| 90 | 788067B | | Grease (32 oz. bottle Bentonite greas e) |
| 96 | 780084 | | Thrust Bearing |
| 97 | 780051 | | Thrust Washer |
| 98 | 780165 | | Flat Washer |
| 99 | 788077 | | "O" Ring |
| 100 | 780166 | | Cupped Washer |
| 101 | 774833 | | Differential Carrier (threaded holes) |
| 102 | 774834 | | Differential Carrier |
| 103 | 792020 | | Screw, 1/4-20 x 2-1/4" |
| 104 | 792006 | | Lockwasher, 1/4" |
| 105 | 780153 | | Washer (NOTE: This model requires that the bevel gear be in a reversed position, therefore placement of thebearing 780071 and washers 780072 & 780153 should be as shown in the boxed inset on the illustration.) |
| 106 | 786144 | | Sleeve |
| 107 | 780150 | | Needle Bearing |
| 108 | 780152 | | Needle Bearing (capped) |
| 109 | 792001 | | "O" Ring |
| 110 | 786142 | | Sleeve (stepped) |
| 111 | 788071 | | Square Cut Ring |
| 112 | 780168 | | Needle Bearing (capped) |
| 113 | 786143 | | Sleeve (stepped) |
| 114 | 780151 | | Needle Bearing (capped) |
| 115 | 786145 | | Sleeve (stepped) |
| 116 | 788070 | | Square Cut Ring |
| 117 | 780031 | | Needle Bearing |
| 150 | 510334 | | Gasket Eliminator (Loctite #515) |