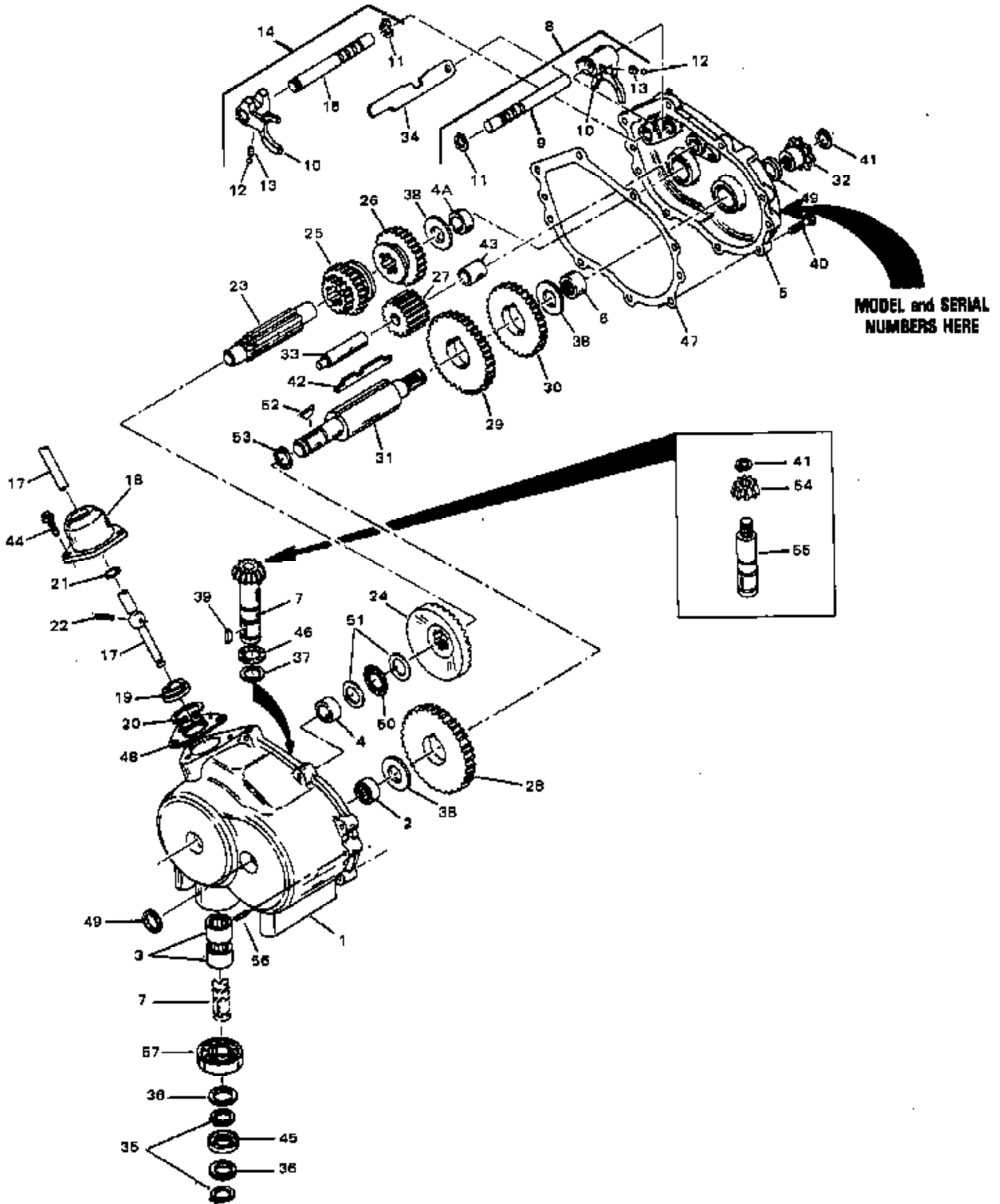


ILLUSTRATION SHOWS TYPICAL PARTS ONLY. ORDER BY PART NUMBER. PARTS NOT LISTED ARE SUPPLIED BY OEM.



Ref #	Part Number	Qty	Description
1	770056		Case Assy., Transaxle (Incl. 2, 3 & 4)
2	780085		Bearing Needle
3	780085		Bearing, Needle
4A	780081		Bearing, Bronze
4	780088		Bearing, Needle
5	772061A		Cover Assy., Transmission (Incl. 4A & 6)
6	530105		Bearing, Needle
8	784079		Rod Assy., Shift (Incl. 9 thru 13)
9	784083		Rod, Shift
10	784004		Fork Shifter
11	792017		Ring Retainer
12	792004		Ball, Steel
13	792003	400-400	Spring Page 2 of 2
14	784128	Peerless	Rod Assy., Shift (Incl. 10 thru 13 & 15)
15	784129		Rod, Shift
17	784131		Lever Shift
18	784088		Housing, Shift lever
19	784094		Keeper, Shift lever
20	792016		Ring, Snap
21	792001		Ring, Quad
22	792049		Pin, Drive
23	776079		Shaft, Shifter
24	778057		Gear Bevel (33 teeth)
25	778071		Gear Shift (1st & 2nd)
26	778072		Gear Shift (3rd. & Rev.)
27	778073		Idler Reverse
28	778074		Gear (39 teeth)
29	778062		Gear (34 teeth)
30	778075		Gear (30 teeth)
31	776080		Shaft, Output
32	786047		Sprocket (8 teeth) (No. 41 chain size)
33	776081		Shaft, Reverse idler
34	784132		Stop Shifter
35	792035		Ring Retainer
37	780072		Washer, Thrust
38	780001		Washer
39	792045		Key, Woodruff No. 61
40	792046		Screw, 1/4-20 x 1"
41	788040		Ring, Retainer
42	792034A		Key, Countershaft
43	786036		Spacer, Reverse idler
44	792007		Screw, 1/4-20 x 3/4"
45	788035A		Seal, Oil
46	780071		Bearing, Thrust
47	788041		Gasket, Transmission
48	788003		Gasket, Shift lever housing
49	788042		Seal, Oil
50	780084		Bearing, Thrust
51	780051		Washer, Thrust
54	778077		Pinion, Input Input shaft & gear assembly was staked together on early production units, and must be serviced as an assembly.
55	776107		Shaft Input
56	786026		Pin, Dowel
57	780093		Bearing, Ball