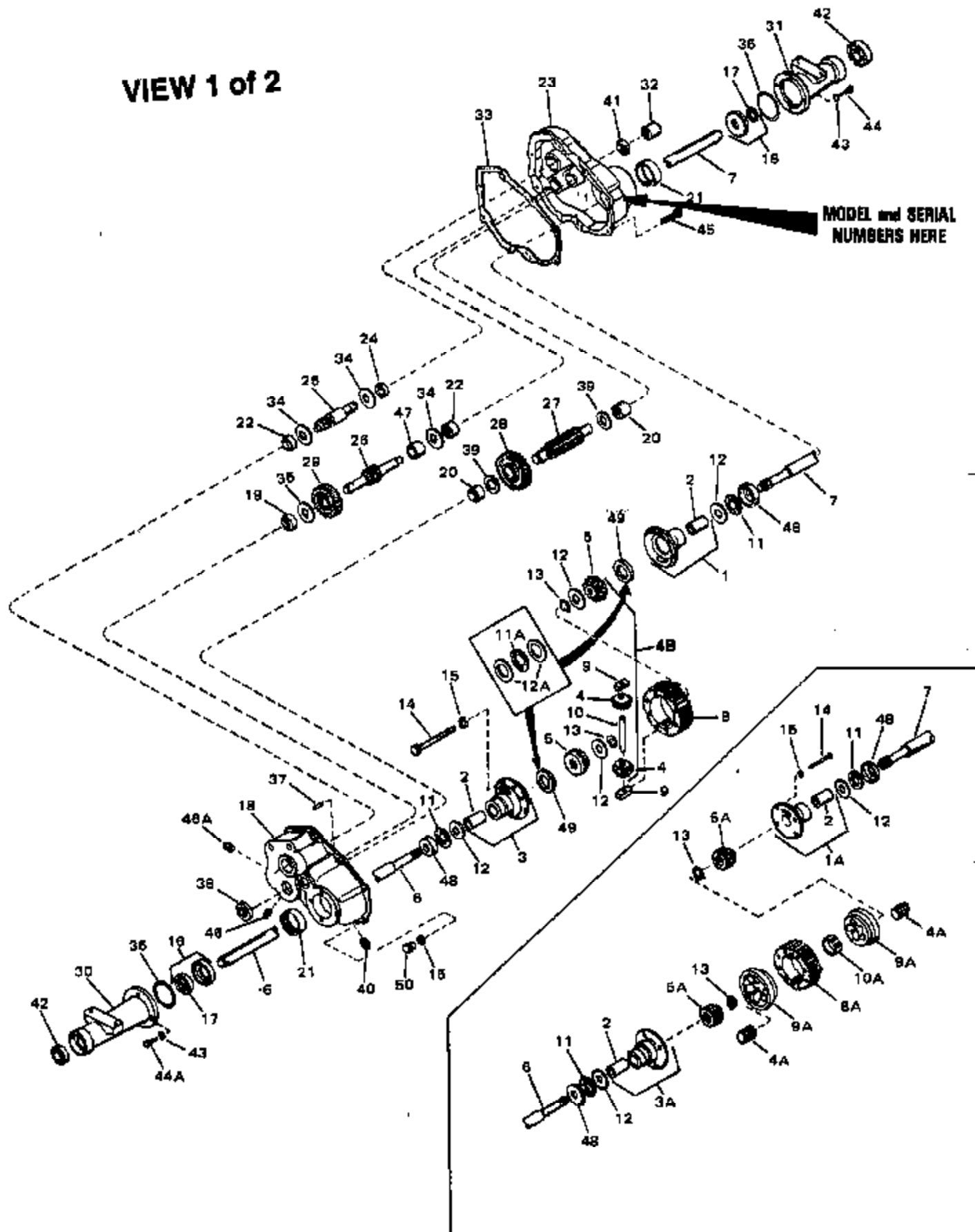
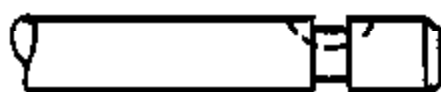
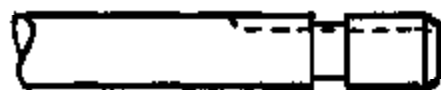
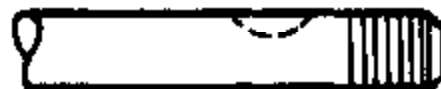


ILLUSTRATION SHOWS TYPICAL PARTS ONLY. ORDER BY PART NUMBER. PARTS NOT LISTED ARE SUPPLIED BY OEM.

VIEW 1 of 2



Ref #	Part Number	Qty	Description
1	772059		Cover Assembly (Incl. 107, 112, 114 & 117)
3	770045		Case Assembly (Incl. 107, 108, 112 & 117)
5	776065		Output Pinion
6	778036		Output Gear
13	778095		Bevel Gear
14	778094		Bevel Pinion
15	778033A		Ring Gear
16	786027		Drive Block
17	786019		Drive Pin
25	792007		Screw, 1/4-20 x 3/4"
26	792018		Snap Ring
29	780042		Thrust Washer
29A	780042	2400-2403A Peerless #1	Thrust Washer (NOTE: One (1) washer 780107 can be used interchangeably in place of two (2) 780042 washers and one (1) 780039 thrust bearing in this location only.)
31B	780107		Washer
31A	780075		Thrust Race
31	780052		Thrust Washer
34	786039		Spacer
39	786026		Dowel Pin
47B	774117		Axle (16-11/32" long)
48B	774116		Axle (14-3/32" long)
66	776063		Input Shaft & Pinion
67	776064		Brake Shaft & Gear
69	780007		Thrust Washer
85B	792019		Magnetic Drain Plug
85	792050		Vent Plug
85A	792010		Pipe Plug, 3/8" sq hd.
87	788008		Oil Seal
88	788005		Oil Seal
89	780050		Ball Bearing
96A	780039		Thrust Bearing (NOTE: One (1) washer 780107 can be used interchangeably in place of two (2) 780042 washers and one (1) 780039 thrust bearing in this location only.)
96	780039		Thrust Bearing
101	774072A		Differential Carrier (Incl. 139)
102	774071A		Differential Carrier (Incl. 139)
103	792005		Screw, 1/4-20 x 2-1/2"
104	792006		Lockwasher, 1/4"
107	780049		Needle Bearing (capped)
108	780074		Needle Bearing
112	780047		Needle Bearing (capped)
114	780046		Needle Bearing
117	780048		Needle Bearing
124	788023		Case & Cover Gasket
132	778037		Idler Gear
136	782027A		Axle Housing (8-3/4" long)
138	782028A		Axle Housing (6-33/64" long)
139	780041		Bushing
154	788021		Oil Seal & Retainer (Incl. 87)
155	792037		Screw, 5/16-18 x 1"
155A	792037		Screw, 5/16-18 x 1"
157	786038		Coupling
163	788024		Square Cut Seal
180	730229A		Gear Oil SAE 80W90

6**VIEW 2 of 2****7****6A****7A****6B****7B****6C****7C****6D****7D****6E****7E****6F****7F**

Ref #	Part Number	Qty	Description
6	778036		Output Gear
29A	780042		Thrust Washer (NOTE: One (1) washer 780107 can be used interchangeably in place of two (2) 780042 washers and one (1) 780039 thrust bearing in this location only.)
31A	780075		Thrust Race
31B	780107		Washer
47B	774117		Axle (16-11/32" long)
48B	774116		Axle (14-3/32" long)
66	776063		Input Shaft & Pinion
67	776064		Brake Shaft & Gear
69	780007		Thrust Washer
85	792050		Vent Plug
85A	792010	2400-2403A	Pipe Plug, 3/8" sq hd.
85B	792019	Peerless #2	Magnetic Drain Plug
87	788008		Oil Seal
88	788005		Oil Seal
89	780050		Ball Bearing
96	780039		Thrust Bearing
96A	780039		Thrust Bearing (NOTE: One (1) washer 780107 can be used interchangeably in place of two (2) 780042 washers and one (1) 780039 thrust bearing in this location only.)
101	774072A		Differential Carrier (Incl. 139)
102	774071A		Differential Carrier (Incl. 139)
103	792005		Screw, 1/4-20 x 2-1/2"
104	792006		Lockwasher, 1/4"
107	780049		Needle Bearing (capped)
108	780074		Needle Bearing
112	780047		Needle Bearing (capped)
114	780046		Needle Bearing
117	780048		Needle Bearing
124	788023		Case & Cover Gasket
132	778037		Idler Gear
136	782027A		Axle Housing (8-3/4" long)
138	782028A		Axle Housing (6-33/64" long)
139	780041		Bushing
154	788021		Oil Seal & Retainer (Incl. 87)
155	792037		Screw, 5/16-18 x 1"
155A	792037		Screw, 5/16-18 x 1"
157	786038		Coupling
163	788024		Square Cut Seal
180	730229A		Gear Oil SAE 80W90