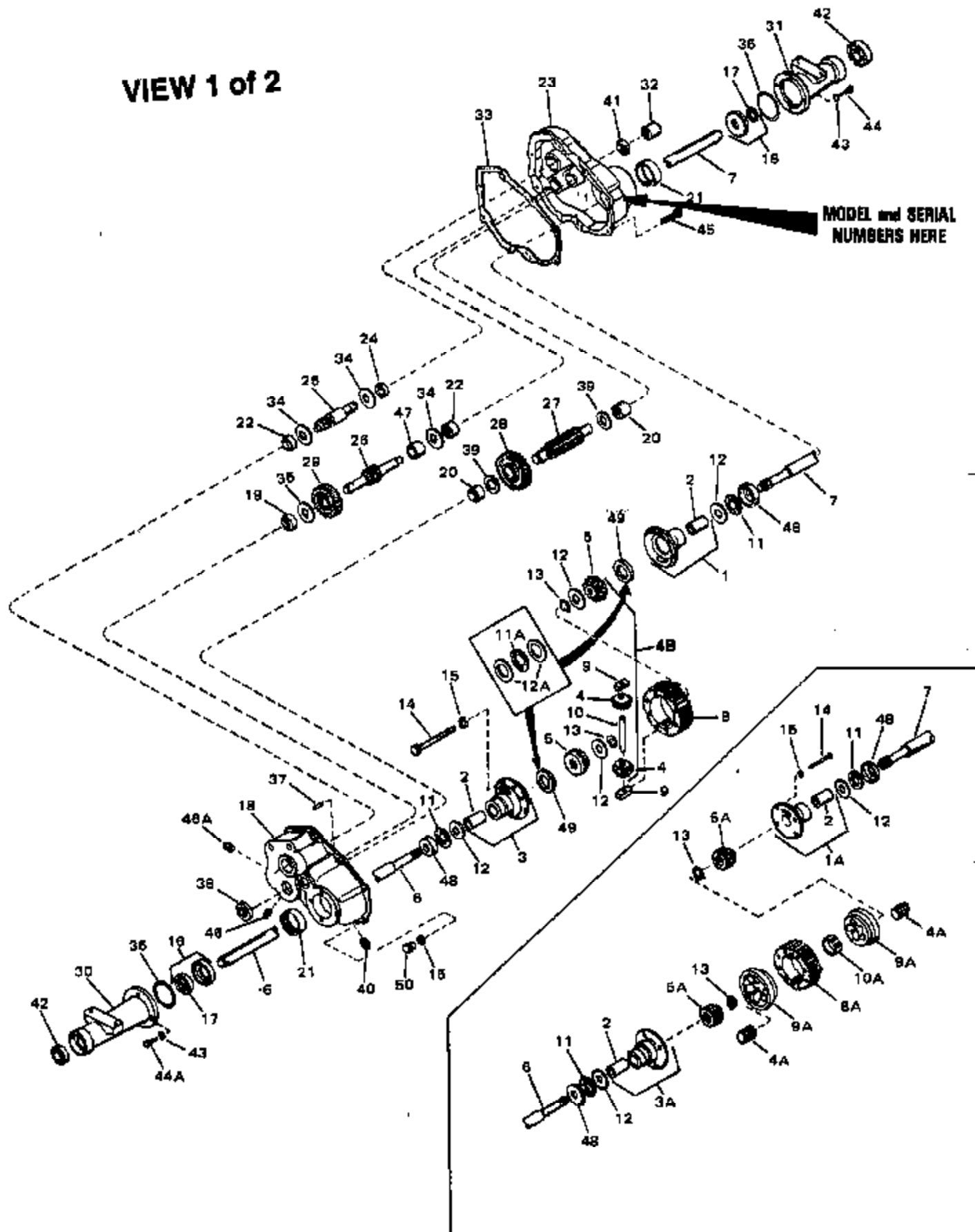


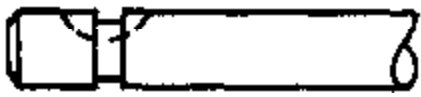
ILLUSTRATION SHOWS TYPICAL PARTS ONLY. ORDER BY PART NUMBER. PARTS NOT LISTED ARE SUPPLIED BY OEM.

VIEW 1 of 2



| Ref # | Part Number | Qty | Description |
|-------|-------------|-----------------------|--|
| 1 | 772059 | | Cover Assembly (Incl. 107, 112, 114 & 117) |
| 3 | 770045 | | Case Assembly (Incl. 107, 108, 112 & 117) |
| 5 | 776065 | | Output Pinion |
| 6 | 778036 | | Output Gear |
| 14B | 778147 | | Gear Kit (Incl. 13 & 14) |
| 15 | 778033A | | Ring Gear |
| 16 | 786027 | | Drive Block |
| 17 | 786019 | | Drive Pin |
| 25 | 792007 | | Screw, 1/4-20 x 3/4" |
| 26 | 792018 | | Snap Ring |
| 29A | 780042 | | Thrust Washer (NOTE: One (1) washer 780107 can be used interchangeably in place of two (2) 780042 washers and one (1) 780039 thrust bearing in this location only.) |
| | | 2400-2402 Peerless #1 | |
| 29 | 780042 | | Thrust Washer |
| 31B | 780107 | | Washer |
| 31A | 780075 | | Thrust Race |
| 31 | 780052 | | Thrust Washer |
| 34 | 786039 | | Spacer |
| 39 | 786026 | | Dowel Pin |
| 47A | 774041 | | Axle (13-35/64" long) |
| 48A | 774041 | | Axle (13-35/64" long) |
| 66 | 776063 | | Input Shaft & Pinion |
| 67 | 776064 | | Brake Shaft & Gear |
| 69 | 780007 | | Thrust Washer |
| 85A | 792010 | | Pipe Plug, 3/8" sq hd. |
| 85B | 792019 | | Magnetic Drain Plug |
| 85 | 792010 | | Pipe Plug, 3/8" sq hd. |
| 87 | 788008 | | Oil Seal |
| 88 | 788005 | | Oil Seal |
| 89 | 780050 | | Ball Bearing |
| 96 | 780039 | | Thrust Bearing |
| 96A | 780039 | | Thrust Bearing (NOTE: One (1) washer 780107 can be used interchangeably in place of two (2) 780042 washers and one (1) 780039 thrust bearing in this location only.) |
| 101 | 774072A | | Differential Carrier (Incl. 139) |
| 102 | 774071A | | Differential Carrier (Incl. 139) |
| 103 | 792005 | | Screw, 1/4-20 x 2-1/2" |
| 104 | 792006 | | Lockwasher, 1/4" |
| 107 | 780049 | | Needle Bearing (capped) |
| 108 | 780074 | | Needle Bearing |
| 112 | 780047 | | Needle Bearing (capped) |
| 114 | 780046 | | Needle Bearing |
| 117 | 780048 | | Needle Bearing |
| 124 | 788023 | | Case & Cover Gasket |
| 132 | 778037 | | Idler Gear |
| 136 | 782019 | | Axle Housing (7.682" long) |
| 138 | 782019 | | Axle Housing (7.682" long) |
| 139 | 780041 | | Bushing |
| 154 | 788021 | | Oil Seal & Retainer (Incl. 87) |
| 155 | 792037 | | Screw, 5/16-18 x 1" |
| 155A | 792037 | | Screw, 5/16-18 x 1" |
| 157 | 786038 | | Coupling |
| 163 | 788024 | | Square Cut Seal |
| 180 | 730229A | | Gear Oil SAE 80W90 |

6



VIEW 2 of 2

7



6A



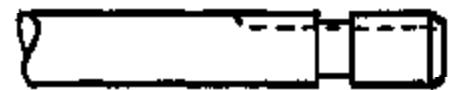
7A



6B



7B



6C



7C



6D



7D



6E



7E



6F



7F



| Ref # | Part Number | Qty | Description |
|-------|-------------|-----------------------|--|
| 6 | 778036 | | Output Gear |
| 14B | 778147 | | Gear Kit (Incl. 13 & 14) |
| 29A | 780042 | | Thrust Washer (NOTE: One (1) washer 780107 can be used interchangeably in place of two (2) 780042 washers and one (1) 780039 thrust bearing in this location only.) |
| 31B | 780107 | | Washer |
| 31A | 780075 | | Thrust Race |
| 47A | 774041 | | Axle (13-35/64" long) |
| 48A | 774041 | | Axle (13-35/64" long) |
| 66 | 776063 | | Input Shaft & Pinion |
| 67 | 776064 | | Brake Shaft & Gear |
| 69 | 780007 | | Thrust Washer |
| 85 | 792010 | 2400-2402 Peerless #2 | Pipe Plug, 3/8" sq hd. |
| 85A | 792010 | | Pipe Plug, 3/8" sq hd. |
| 85B | 792019 | | Magnetic Drain Plug |
| 87 | 788008 | | Oil Seal |
| 88 | 788005 | | Oil Seal |
| 89 | 780050 | | Ball Bearing |
| 96A | 780039 | | Thrust Bearing (NOTE: One (1) washer 780107 can be used interchangeably in place of two (2) 780042 washers and one (1) 780039 thrust bearing in this location only.) |
| 96 | 780039 | | Thrust Bearing |
| 101 | 774072A | | Differential Carrier (Incl. 139) |
| 102 | 774071A | | Differential Carrier (Incl. 139) |
| 103 | 792005 | | Screw, 1/4-20 x 2-1/2" |
| 104 | 792006 | | Lockwasher, 1/4" |
| 107 | 780049 | | Needle Bearing (capped) |
| 108 | 780074 | | Needle Bearing |
| 112 | 780047 | | Needle Bearing (capped) |
| 114 | 780046 | | Needle Bearing |
| 117 | 780048 | | Needle Bearing |
| 124 | 788023 | | Case & Cover Gasket |
| 132 | 778037 | | Idler Gear |
| 136 | 782019 | | Axle Housing (7.682" long) |
| 138 | 782019 | | Axle Housing (7.682" long) |
| 139 | 780041 | | Bushing |
| 154 | 788021 | | Oil Seal & Retainer (Incl. 87) |
| 155 | 792037 | | Screw, 5/16-18 x 1" |
| 155A | 792037 | | Screw, 5/16-18 x 1" |
| 157 | 786038 | | Coupling |
| 163 | 788024 | | Square Cut Seal |
| 180 | 730229A | | Gear Oil SAE 80W90 |

Page 4 of 4