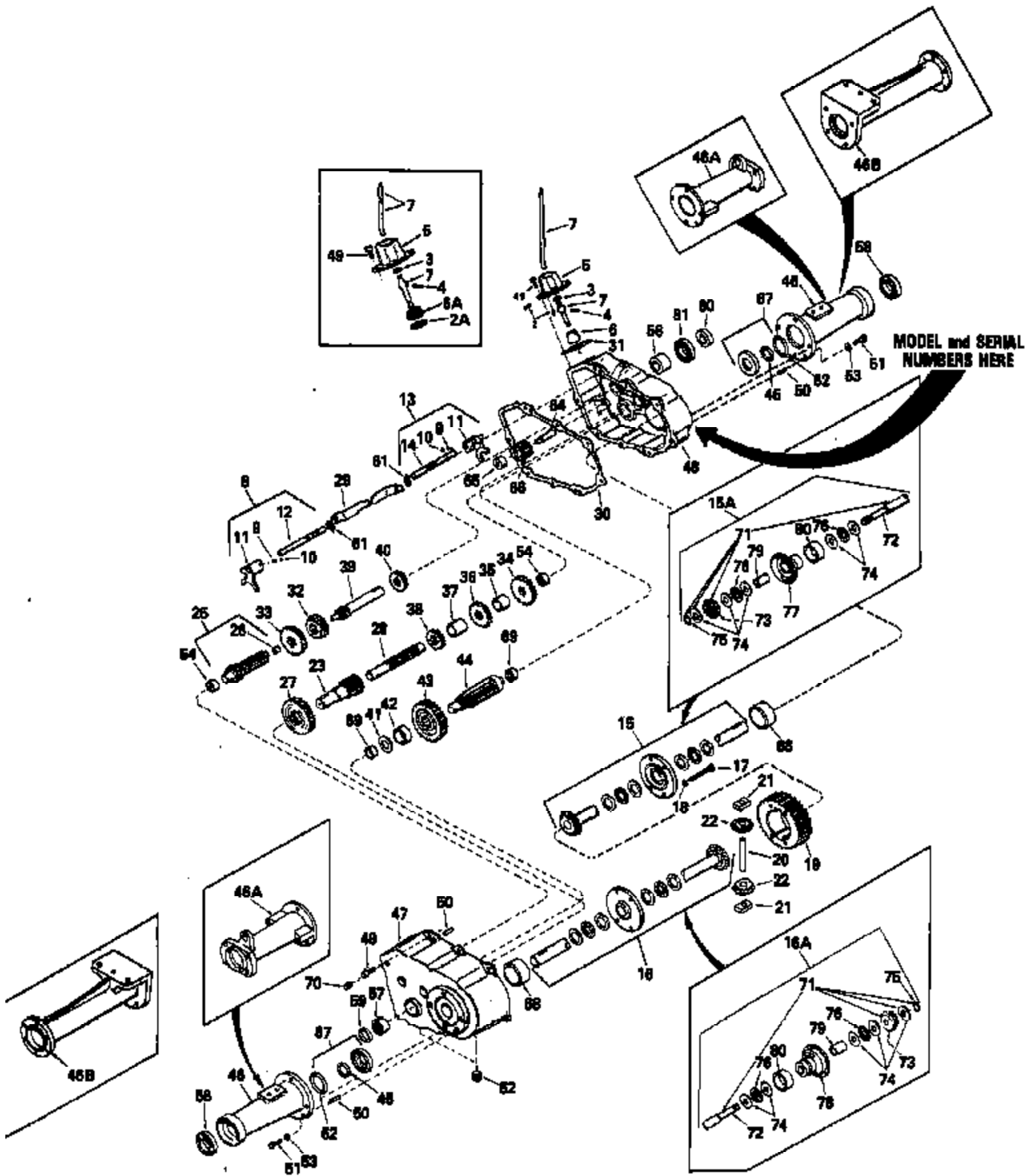


ILLUSTRATION SHOWS TYPICAL PARTS ONLY. ORDER BY PART NUMBER. PARTS NOT LISTED ARE SUPPLIED BY OEM.



Ref #	Part Number	Qty	Description
2	792000		Pin, 1/8 x 3/8
3	792001		"O" Ring
4	792049		Pin, Drive
5	784018A		Housing, Shift lever
6	784016		Keeper, Shift lever
7	784035		Lever, Shift
8	784056		Rod & Fork, Shift (Incl. 9 thru 12 & 61)
9	792003		Spring
10	792004		Ball, Steel
11	784004		Fork, Shifter
12	784057		Rod, Shifter (First & Reverse)
13	784054		Rod & Fork, Shift (Incl. 9 thru 11, 14 & 61)
14	784055	2000-2001-4	Rod, Shifter (Second & High)
15		Peerless	Axle Assy., RH(OLD STYLE) NOTE: Transaxle below was originally produced with OLD STYLE axle assembly, which had bevel gear rolled on axle. NEW STYLE axle assemblies are now available. Any combination of component parts can be purchased, Ref. Nos.71 thru 80.
15A	774020		Axle Assy., RH (NEW STYLE)(13.343 lon g) NOTE: Transaxle below was originally produced with OLD STYLE axle assembly, which had bevel gear rolled on axle. NEW STYLE axle assemblies are now available. Any combination of component parts can be purchased, Ref. Nos.71 thru 80.
16A	774021		Axle Assy., LH (NEW STYLE)(13.343 lon g) NOTE: Transaxle below was originally produced with OLD STYLE axle assembly, which had bevel gear rolled on axle. NEW STYLE axle assemblies are now available. Any combination of component parts can be purchased, Ref. Nos.71 thru 80.
16			Axle Assy., LH (OLD STYLE) NOTE: Transaxle below was originally produced with OLD STYLE axle assembly, which had bevel gear rolled on axle. NEW STYLE axle assemblies are now available. Any combination of component parts can be purchased, Ref. Nos.71 thru 80.
17	792005		Screw, 1/4-20 x 2-1/2"
18	792006		Lockwasher, Split 1/4"
19	778033A		Gear, Ring (1.500 wide, 31 teeth)
20	786019		Pin, Drive (.497 dia. x 3.357 long)
21	786027		Block, Drive
22	778030		Bevel Pinion, Differential
23	776022		Shaft & Bushing, Brake (3.687 long)
25	776014		Shaft & Gear, Shifter (Incl. 26)(4.56 2 long)
26	780018		Beaing, Needle
27	778037		Gear, Idler
28	776032		Shaft, Idler (.873 dia. x 5.750 long)
29	784074		Stop, Shifter
30	788026		Gasket, Case to cover
31	788003		Gasket, Shift lever housing
32	778019		Gear, Shifting (Second & High)
33	778020		Gear, Shifting (First & Reverse)
34	788021		Gear, Spur (26 tooth)
35	786014		Spacer, Idler shaft
36	778022		Gear, Idler shaft (22 tooth)
37	786015		Spacer, Idler shaft
38	778023		Gear, Idler shaft (16 tooth)

Ref #	Part Number	Qty	Description
39	776067		Shaft, Input (4.042 long)
40	778024		Spur Gear, Input shaft
41	780001		Washer, Output shaft
42	786017		Spacer, Output shaft
43	778036		Spur Gear, Output
44	776023		Shaft, Output (6.00 long)
45	788008		Seal, Oil
46	782019		Housing, Axle (7.687 long)
47	772032		Cover, Transaxle (Incl. 54, 57, 68 & 69)
48	770024		Case, Transaxle (Incl. 54, 56, 68 & 6 9)
49	792007		Screw, 1/4-20 x 3/4"
50	792008		Pin, Dowel (.250 dia. x .750 long)
51	792013	2000-2001-4	Screw, 5/16-18 x 3/4"
52	792010	Peerless	Plug, Inspection & drain
53	792015		Lockwasher, Shakeproof 5/16"
54	780013		Bearing, Needle
56	780011		Bearing (.750 ID x 1.250 OD x 1.00 lo ng)
57	780055		Bearing, Needle
58	780050		Bearing, Ball
59	788008		Seal, Oil
60	788009		Seal, Oil
61	792017		Ring, Snap
62	788024		"O" Ring
64	776008		Shaft, Reverse idler
65	786008		Spacer, Reverse idler
66	778016		Idler, Reverse
67	788037		Retainer Assy., Seal (Incl. 45)
68	780021		Bearing, Needle
69	780014		Bearing, Needle (closed end)
70	792012		Set Screw, 3/8-16 x 3/8"
71	774059		Axle & Gear Assy. (Incl. 72 thru 75)
72	774058A		Axle (13.343 long)
73	778032		Gear, Bevel
74	780042		Washer, Thrust
75	792018		Ring, Retainer
76	780039		Bearing, Thrust
77	774040		Carrier Assy., Differential (Incl. 79)
78	774039		Carrier Assy., Differential (Incl. 79)
79	780041		Bushing (.876 ID x 1.003 OD x 1.750 l ong)
80	780038		Bushing (1.500 ID x 1.750 OD x 1.010 long)