

HOMELITE®

PARTS LIST LISTE DE PIÈCES

RT-5 TILLER MOTOCULTEUR UT22084

**(For Serial Numbers HL0320001 and Above)
(En débutant avec le numéro de série HL0320001 et les suivants)**

Printed in U.S.A.
Imprimé aux E.U.
P/N 18641

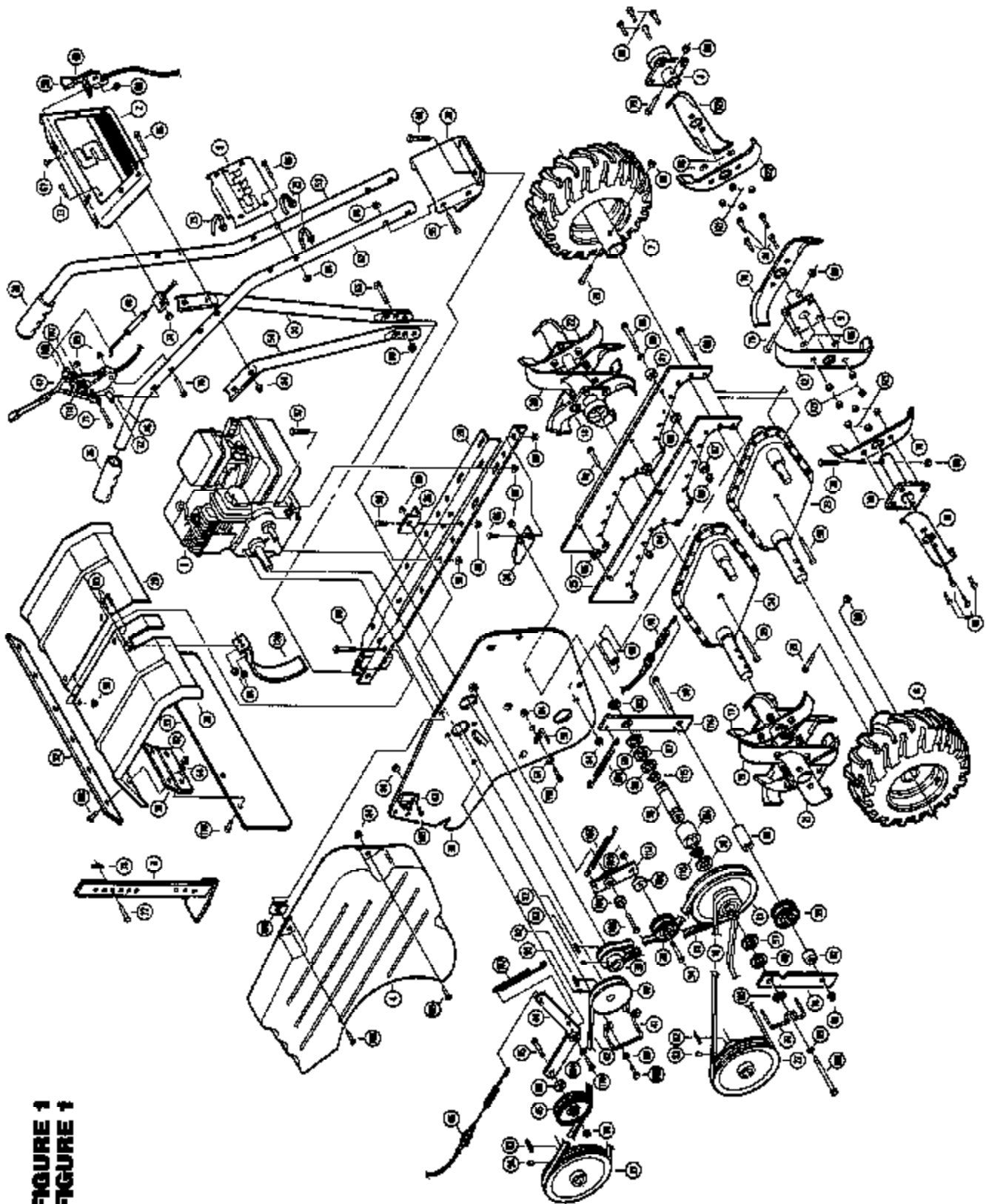


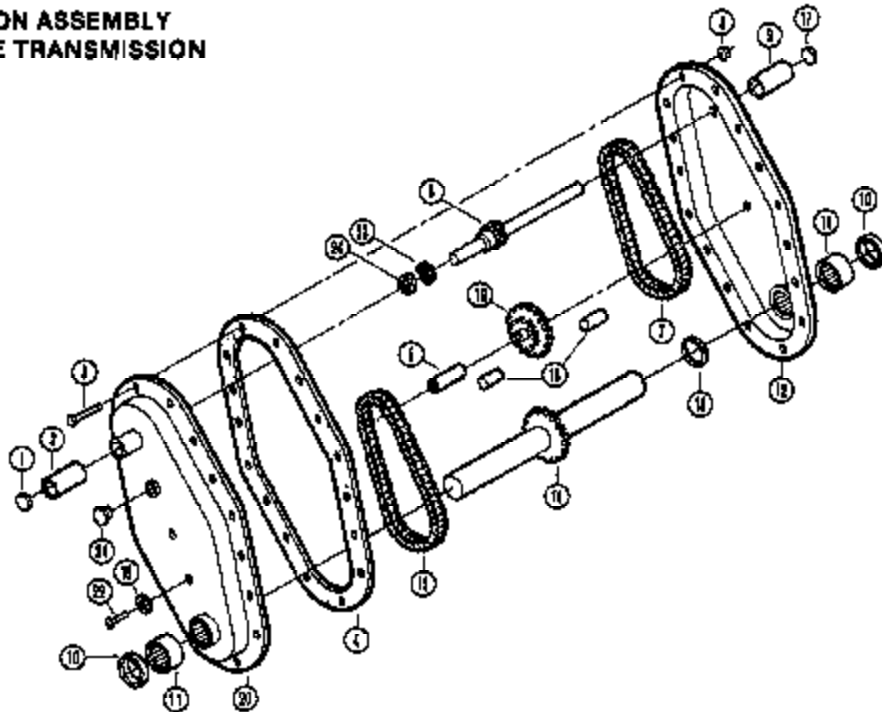
FIGURE 1
FIGURE 1

NCL NO.	Part No. No. de pièce	Description	Qty. Onh.	MO. NO.	Part No. No. de pièce	Description	Qty. Onh.
1	01213-01	ENGINE- BLS (5 H.P.)	1	93	01212-71	1/4-20 x 1/2" FL. HD. C.S.	2
2	01213-02	HANDLE- Drive (upper)	1	94	84006	WASHER- Flat (1/4")	11
3	01213-03	DEPTH BAR	1	95	JA-40019-6	3/16-18 x 2" FL. HD. C.S.	1
4	01213-04	GUARD- Belt	1	96	JA-40011-8	1/4-20 x 1 3/4" FL. HD. C.S.	1
5	01213-05	PLATE- Handle (lower)	1	97	01212-85	1/4-20 x 3/8" Tr. Hd. M.S.	4
6	01213-06	WHEEL & TIRE ASSY. (right)	2	98	01213-70	MUT- FLANGE LOCKWRT. 10-32	2
7	01212-79	WHEEL & TIRE ASSY. (left)	2	99	01213-64	LOCKWRT. Nylon 10-24	2
8	01212-80	TIRE HUB ASSY. (right)	2	100	01213-65	10-24 x 1 1/2" Tr. Hd. M.S.	2
9	01212-81	TIRE HUB ASSY. (left)	2	101	01213-66	10-24 x 3/4" Tr. Hd. M.S.	2
10	01213-82	TIRE HUB ASSY. (center)	2	102	01213-67	01213-67	1
11	01213-83	TIRE HUB ASSY. (outer)	2	103	01213-68	01213-68	1
12	01213-84	TIRE BLADE- 11" (L.H.)	4	104	01213-69	94 Long	1
13	01213-12	DOUBLE PULLEY WELDMENT (S & T)	4	105	80409-2	10-24 x 3/4" Long Tr. Hd. M.S.	1
14	01213-13	ROLLER ARM (welded drive, second stage, center)	1	106	01213-97	KEPNUT. 10-24	1
15	01213-16	V-BELT- (1st stage) (welded drive)	1	107	01213-97	TE- Cable	3
16	01213-15	V-BELT- (2nd stage)	1	108	01213-98	GRP- Handle (1" I.D.)	3
17	03103-11	WINNER TIME ASSY. (right)	1	109	01213-99	Pin- Chain (3/8" O.D. x 1 5/8" Long)	1
18	03103-10	WINNER TIME ASSY. (left)	1	110	01213-100	HANGER- Center (98) Wire (DL)	1
19	01212-84	CENTER TIME ASSY. (right)	1	111	JA-40205-9	3/8-16 x 1 3/4" H.H. C.S. (for 5)	6
20	01212-85	CENTER TIME ASSY. (left)	1	112	01213-2	LOCKWRT- Center (28" x 5)	4
21	01212-86	CUTTER TIME ASSY. (right)	1	113	01213-28	1/4-20 x 1 1/2" FL. HD. C.S.	24
22	01212-88	CUTTER TIME ASSY. (left)	1	114	JA-40011-2	1/4-20 x 1" H.H. C.S. (for 2)	24
23	01212-89	TRANSMISSION ASSY. (welded drive)	1	115	01213-27	LOCKWRT- Flange (1/4-20)	19
24	01212-92	TRANSMISSION ASSY. (line-drive)	1	116	82332	8-16-18 x 2 1/2" H.H. C.S.	33
25	01213-24	TRANSMISSION MOUNTING PLATE	2	117	01213-27	SPACER- 1/2" x 3/4" D.D. x 2 1/2" long	4
26	01213-25	ENGINE BASE & FRAME ASSY.	1	118	01213-27	SPACER- 1/2" x 3/4" D.D. x 2 1/2" long	11
27	01213-27	PULLEY (5/8" I.D. x 5" O.D.)	2	119	01213-28	SPACER- 5/16" I.D. x 3/4" D.D. x 7 1/8" long	5
28	01213-28	HANDLE MOUNTING BRACKET	2	120	01213-28	LOCKWRT. Flange (5/16-18)	14
29	01213-29	SHIELD- Time (left)	1	121	84006	WASHER- Flat (3/16")	2
30	01213-30	SHIELD- Time (right)	1	122	01213-30	3/8-16 x 3/4" Fl. Hd. C.S.	2
31	01213-31	SUPPORT- Hinge	2	123	01213-31	LOCKWRT- Range (3/16-16)	2
32	01213-32	SHIELD- Right safety	1	124	01213-31	KEY- 5/16" x 3/16" x 3/4" long	3
33	01213-33	BRACKET- Back plate (left)	1	125	01213-31	SCREW- Set (3/16-18 x 1/4" long)	4
34	01213-34	BRACKET- Back plate (right)	1	126	01213-31	3/8-16 x 1" Fl. Hd. C.S.	4
35	01213-35	PLATE- Back	1	127	01213-31	1/4-20 x 1 1/2" FL. HD. C.S.	8
36	01213-36	RETAINER- Bolt (double pulley)	1	128	01213-31	3/8-16 x 3/4" Fl. Hd. C.S.	2
37	01213-37	PULLEY (5" x 1 1/2" Bore)	1	129	01213-31	1/4-20 x 1 1/2" FL. HD. C.S.	4
38	01213-38	PULLEY- idler (2 x 3/8" Bore)	2	130	01213-31	SPACER- 5/16" I.D. x 1/2" O.D. x 2 7/8" long	1
39	01213-39	PULLEY- 3" x 3/4" Bore (line drive)	1	131	01213-31	MUT- Transmission (1/4-20)	1
40	01213-41	RETAINER- Bolt (line cable)	1	132	01213-31	5/16-18 x 1" H.H. C.S. (for 4)	1
41	01213-41	V-BELT (line drive)	1	133	01213-31	KEY- Woodruff 45	1
42	01213-42	CLIP- Cable (line drive)	1	134	01213-31	5/16-18 x 1" H.H. C.S.	1
43	01213-43	ARM- idler (line drive)	1	135	01213-31	SPACER- 5/16" I.D. x 7/16" D.D. x 25/32" long	2
44	01213-44	PULLEY- idler (2 3/4" x 5/16" Bore)	1	136	01213-31	MUT- Jam (3/8-18)	1
45	01213-44	TIME DRIVE CABLE & BRACKET	1	137	01213-31	SPACER	1
46	01213-45	ADJUSTMENT LEVER	1	138	01213-31	SPACER	1
47	01213-46	PALM GRIP ASSY.	1	139	01213-31	SPACER- 3/8" I.D. x 1 1/2" O.D. x 7 1/8" long	1
48	01213-47	CABLE (welded drive)	1	140	01213-31	SPACER- 3/8" I.D. x 1 1/2" O.D. x 7 1/8" long	1
49	01213-48	CONTROL- Throttle	1	141	01213-31	SPACER- 3/8" I.D. x 1 1/2" O.D. x 7 1/8" long	1
50	01213-49	CONTROL- Throttle control	1	142	01213-31	SPACER- 3/8" I.D. x 1 1/2" O.D. x 7 1/8" long	1
51	01213-49	RETAINER- Bolt (welded drive)	1	143	01213-31	SPACER- 3/8" I.D. x 1 1/2" O.D. x 7 1/8" long	1
52	01212-50	HANDLE- Right	1	144	01213-31	SPACER- 3/8" I.D. x 1 1/2" O.D. x 7 1/8" long	1
53	01213-51	HANDLE- Left	1	145	01213-31	SPACER- 3/8" I.D. x 1 1/2" O.D. x 7 1/8" long	1
54	01213-52	BRACE- Support (right handle)	1	146	01213-31	SPACER- 3/8" I.D. x 1 1/2" O.D. x 7 1/8" long	1
55	01213-53	BRACE- Support (left handle)	1	147	01213-31	SPACER- 3/8" I.D. x 1 1/2" O.D. x 7 1/8" long	1
56	01212-54	SHAFT- (double pulley)	1	148	01213-31	SPACER- 3/8" I.D. x 1 1/2" O.D. x 7 1/8" long	1
57	01212-61	OIL SEAL (5/8" I.D.)	2	149	01213-31	SPACER- 3/8" I.D. x 1 1/2" O.D. x 7 1/8" long	1
58	01213-55	TRU-ARC SUPPORT WASHER	2	150	01213-31	SPACER- 3/8" I.D. x 1 1/2" O.D. x 7 1/8" long	1
59	01212-2	3/8" x 1/8" x 2 1/2" H.I.C.S.	2	151	01213-31	SPACER- 3/8" I.D. x 1 1/2" O.D. x 7 1/8" long	1
60	01212-78	5/8" I.D. TORINGTON WASHER	2	152	01213-31	SPACER- 3/8" I.D. x 1 1/2" O.D. x 7 1/8" long	1
61	01212-85	O.D. 1 1/2" long	1	153	01213-31	SPACER- 3/8" I.D. x 1 1/2" O.D. x 7 1/8" long	1
62	01212-99	SPACER- 3/8" I.D. x 3/4" O.D. x 1 1/4" long	1	154	01213-31	SPACER- 3/8" I.D. x 1 1/2" O.D. x 7 1/8" long	1

*Use your local bridge & structure dealer for engine replacement parts.
 *Procurez-vous les pièces de rechange pour le moteur chez le concessionnaire Bridge and structure de votre région.

FIGURE 2
FIGURE 2

TRANSMISSION ASSEMBLY
MONTAGE DE TRANSMISSION



WHEEL DRIVE PARTS LIST
LISTE DE PIÈCES POUR LES UNITÉS MUNIES D'UN ENTRAÎNEMENT PAR ROUES.

NO. NO.	Part No. No. de pièce	Description	Qty. Qté.
1	01212-57	CAP- Bearing 13/16"	1
2	01212-66	BEARING- Oilite 5/8" (Long)	1
3	01212-71	1/4-20 x 1/2" w/3/8" Fl Hd C B	8
4	01213-70	GASKET	1
5	01212-46	BEARING- Inner race	1
6	01213-71	PULLEY SHAFT SPRKT ASSY (88)	1
7	01213-72	CHAIN 35 x 60	1
8	JA-44576-8	LOCKNUT- Flange 1/4-20	8
9	01212-62	BEARING- Oilite 5/8" (Short)	1
10	01213-73	SEAL- Oil 1" I D	2
11	01213-74	BEARING 1" I D	2
12	01213-75	COVER- Transmission (L.H.)	1
13	01213-76	SPACER- Tine shaft	1
14	*01213-77	TINE SHAFT SPROCKET ASSY	1
15	*01213-78	CHAIN 41 x 32	1
16	01212-77	WASHER- Sealing (No 10)	1
17	01212-81	SEAL- Oil 5/8" I D	1
18	01212-74	BEARING- Needle	2
19	01213-81	SPROCKET- Tooth (8-54)	1
20	01213-82	COVER- Transmission (R.H.)	1
21	01212-58	PLUG- Oil fill	1
22	01212-75	SCREW- #10 x 3 3/8" H.H. Slit	1
23	01213-97	RING- Retaining 5/8" (.05 THK)	1
24	01212-78	WASHER- Thrust 5/8"	1

TRANSMISSION PARTS LIST (Tine drive same as parts above except for parts below)
LISTE DE PIÈCES DE TRANSMISSION (Pour les unités munies d'un entraînement par fourches - consist dans les pièces ci-haut mentionnées ainsi que les suivantes)

NO. NO.	Part No. No. de pièce	Description	Qty. Qté.
14	*03103-09	TINE SHAFT SPRKT ASSY (Hard)	1
15	*01212-91	CHAIN 41 x 32 (Heavy Duty)	1