

for

JACOBSEN[®]
IMPERIAL 26 AND 30
SNOW THROWERS
HEAVY DUTY 2 STAGE

NO. 52612 - 5 H.P.
SERIAL NO. 6799 AND UP

NO. 52625 - 7 H.P.
SERIAL NO. 14901 AND UP

NO. 52630 - 8 H.P.
SERIAL NO. 6160 AND UP



JACOBSEN MANUFACTURING COMPANY
A Member Company of Allegheny Ludlum Industries
RACINE, WISCONSIN 53403

Part No. 353256

PARTS LIST - ENGINE AND WHEELS

Ref. No.	Part No.	Quan.			Description	Ref. No.	Part No.	Quan.			Description
		52612	52625	52630				52612	52625	52630	
1	121508	1	1	1	Tractor Frame Assembly	62	460026	1	1	1	Pin, 1/8x3/4 Cotter
2	445235	3	3	3	Nut, 5/16-18 Retainer, Tinnerman	63	159184	1	1	1	Idler, Arm Assembly
3	129791	1	1	1	Disc Bracket Assembly	64	343459	1	1	1	Spacer
4	362067	1	1	1	Shaft, Driving Disc	65	344439	1	1	1	Pullay, Idler
4A	352069	1	1	1	Sprocket	66	400268	1	2	1	Screw, 3/8-16 x 3/4 Hex Hd Cap
5	239903	1	1	1	Hub, Drive Disc	67	452011	1	1	1	Washer, 3/8 SAE
6	153975	1	1	1	Wheel, Drive	68	446140	1	1	1	Lockwasher, 3/8 Med
7	400130	5	5	5	Screw, 5/16-18x1/2 Hex Hd Cap	69	443110	1	1	1	Nut, 3/8-18 Hex
8	448134	6	5	5	Lockwasher, 5/16 Med	70	345788	1	1	1	Plug, Tractor Frame
9	153935	1	1	1	Sleeve and Bearing Assembly	71	460026	1	1	1	Pin, 1/8x3/4 Cotter
10	469017	1	1	1	Ring, Tru-Aro Retaining	72	440114	3			Screw, 3/8-16 x 3/4 Sh Sq Nk Carriage
11	311537	2	2	2	Bearing, Disc Shaft		400118		8		Screw, 3/8-16 x 7/8 Sq Nk Carriage
12	460026	1	1	1	Pin, 1/8 x 1 Cotter		440088		4		Bolt, 5/16-18 x 1-3/4 Sh Nk Carriage
13	400106	8	8	8	Screw, 1/4-20 x 5/8 Hex Hd Cap	73	446140	4	4		Lockwasher, Med
14	448130	8	8	8	Lockwasher, 1/4 Med		448136		4		Lockwasher, 5/16 Hvy
15	448102	8	8	8	Nut, 1/4-20 Hex	74	443110	4	4		Nut, 3/8-18 Hex
16	460024	1	1	1	Pin, 1/8x1/2 Cotter		443106		4		Nut, 5/16-18 Hex
17	444784	2	2	2	Nut, 1/2-13 Hex Jam o/Lon	75	352181	1	1	1	Spring, Idler Arm
18	159118	1	1	1	Wheel Hub Assm LH	76	239968	1	1	1	Pullay, Engine
19	159115	1	1	1	Pinion and Sprocket Assm (Incl Ref. 20)		241693		1	1	Pullay, Engine
20	343470	2	2	2	Bearing, Roller	77	412014	1	1	1	Screw, 5/16-18 x 1/2 Sq Hd Cap
21	343472	2	2	2	Washer, Thrust	78	306968	1	1	1	Key, Engine Pulley Mig
22	311710	AR	AR	AR	Washer	79	331325	1	1	1	Belt, Drive
23	343474	1	1	1	Shaft, Disc Bracket Pivot		335453		1	1	Belt, Drive
24	326932	1	1	1	Pin, Anti-Rotation	80	159185	1	1	1	Belt Shield Assembly
25	460048	1	1	1	Pin, 3/16 x 1 Cotter	81	400182	2	2	2	Screw, 5/16-18 x 5/8 Hex Hd Cap
26	343469	1	1	1	Chain, Traction	82	446134	2	2	2	Lockwasher, 5/16 Med
27	470503	1	1	1	Service Link	83	328021	1	1	1	Cover, Back
28	159191	1	1	1	Speed Linkage Assembly	84	408658	2	2	2	Screw, 5/16-18 x 3/4 Hex Hd Cap
29	331719	1	1	1	Support Linkage	85	446134	2	2	2	Lockwasher, 5/16 Med
30	460026	1	1	1	Pin, 1/8 x 3/4 Cotter	86	326173	1	1	1	Grip, Clutch Arm
31	440078	2	2	2	Bolt, 5/16-18 x 3/4 Sh Nk Carriage	87	441624	3	3	3	Screw, 3/8-18 x 1 Reg Carr
32	448134	2	2	2	Lockwasher, 5/16 Med	88		1	1	1	Plate, Serial Number
33	443106	2	2	2	Nut, 5/16-18 Hex	89	444762	4	4	4	Nut, 3/8-18 Hex C/Lock
34	343480	1	1	1	Pin, Pivot	90	159193	2	2	2	Clutch Control Link Assm
35	480026	1	1	1	Pin, 1/8 x 3/4 Cotter	91	352204	2	2	2	Spring, Clutch Return
38	153944	1	1	1	Speed Control Rod Assm	92	483113	2	2	2	Key, 3/16 x 3/4 Morton
37	129790	1	1	1	Axle and Gear Assembly	93	352212	1	1	1	Clutch Control Rod (Lower)
38	352053	2	2	2	Bushing, Axle	94	343118	1	1	1	Washer
38A	352054	4	4	4	Retainer, Axle Bushing	95	343166	1	1	1	Cap, Hub
39	440042	8	8	8	Screw, 1/4-20 x 3/4 Sh Nk Carriage	96	362182	1	1	1	Decal, Traction Clutch
40	448130	8	8	8	Lockwasher, 1/4 Med	97	352206	1	1	1	Spring, Compression
41	448102	8	8	8	Nut, 1/4-20 Hex	98	460366	1	1	1	Pin, Internal Cotter
42	460030	4	4	4	Pin, 1/8 x 1-1/4 Cotter	99	362180	1	1	1	Spring, Belt Idler
43	352055	2	2	2	Retainer, Bearing	100	471210	1	1	1	Fitting, Grease, 1/4-20x 45°
44	159182	1	1	1	Pivot, Assembly	101	348182	1	1	1	Stop, Disc Bracket
45	350521	2	2	2	Bushing, Pivot Shaft	102	441624	1	1	1	Screw, 3/8-16 x 1 Carriage
46	445267	2	2	2	Retainer, Tinnerman, Pivot Shaft		441622		1		Bolt, 3/8-18 x 3/8 Reg. Carr
47	341705	2	2		Tire, Pneumatic	103	448142		1		Lockwasher, 3/8 Hvy
	353096			2	Tire, Pneumatic	104	443110		4		Nut, 3/8-16 Hex
48	341704	2	2	2	Tube, Inner	105	346192		4		Spacer, Engine to Frame
49	331348	2	2	2	Rim, Inside	106	440114		1		Bolt, 3/8-18 x 3/4 Sh Nk Carriage
50	331349	2	2	2	Rim, Outside	107	446140		1		Lockwasher, 3/8 Med
51	409280	6	6	6	Screw, 3/8-16 x 7/8 Hex Hd Cap	108	443110		1		Nut, 3/8-16 Hex
52	448140	6	6	6	Lockwasher, 3/8 Med	109	468003	1	1	1	Key, 1/8 x 1/2 Woodruff, Drive Sprocket
53	448110	6	6	6	Nut, 3/8-16 Hex	110	862210	2	2	2	Spring, Retainer, Clutch Control Rod
54	153933	1	1	1	Wheel Hub Assm RH	111	159125	1	1	1	Free Wheeling Hub Assm
55		1	1		Engine, 5 H.P.	112	465004	1	1	1	Ball, 1/4 dia, Free Wheeling
				1	Engine, 7 H.P.	113	471235	1	1	1	Fitting, 5/16 Drive, 65°, Grease
				1	Engine, 8 H.P.	114	310994	1	1	1	Spring, Free Wheeling
56	128828	1	1	1	Idler Plate Assembly	115	458446	1	1	1	Ring, National, Free Wheel.
	129847	1	1	1	Idler Plate Assembly	116	460306	2	2	2	Pin, Internal Cotter
57	400222	2	2	2	Screw, 5/16-24 x 3/4 Hex Hd Cap	117	460080	2	2	2	Pin, 1/8 x 1-1/4 Cotter
58	448134	2	2	2	Lockwasher, 5/16 Med	118	352481	1	1	1	Decal, Be Careful
59	352274	1	1	1	Decal, Instruction	119	311812	2	2	2	Washer
60	159183	1	1	1	Clutch Arm Assembly						
61	454012	2	2	2	Washer, Shakeproof						

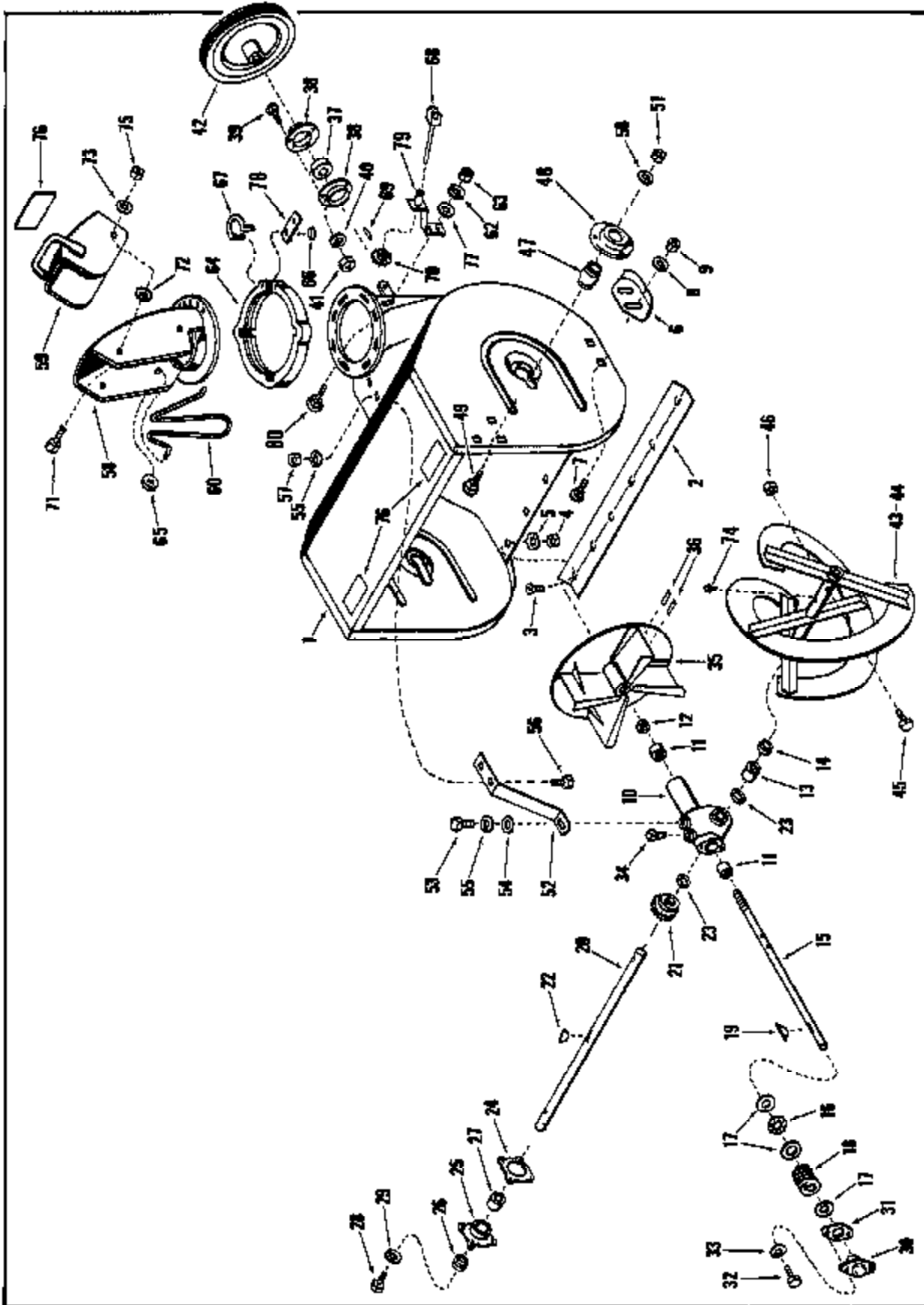


FIGURE 2. AUGER

PARTS LIST - AUGER

Ref. No.	Part No.	Quan.			Description
		52612	52625	52630	
1	116268	1	1		Auger Housing Assem
	116270			1	Auger Housing Assem
2	335154	1	1		Blade, Scraper
	335440			1	Blade Scraper
3	402580	6	6	6	Screw, 1/4-20 x 5/8 Slotted Flat Hd
4	443102	6	6	6	Nut, 1/4-20 Hex
6	454021	6	6	6	Washer, Kubbard
6	341598	2	2	2	Stud, Auger
7	441878	4	4	4	Bolt, 5/16-18 x 5/8 Reg Carriage
8	454027	4	4	4	Washer, 5/16 Shakeproof
9	443106	4	4	4	Nut, 5/16-18 Hex
10	126023	1	1	1	Gear housing Assem (Incl Ref 11 - 14)
12	321293	2	2	2	Bearing, Fan Shaft
12	321294	1	1	1	Seal, Fan Shaft
13	341580	1	1	1	Bearing, Auger Shaft
14	341581	1	1	1	Seal, Auger Shaft
15	332160	1	1	2	Shaft, Fan
16	341584	1	1	1	Bearing, Thrust
17	341583	3	3	3	Race, Thrust Bearing
18	341606	1	1	1	Gear, Worm
19	463113	1	1	1	Key
20	335409	1	1		Shaft, Auger
	335442			1	Shaft, Auger
21	341608	1	1	1	Wheel, Worm
22	463022	1	1	1	Key, 1/4 x 7/8 Woodruff #A
23	341609	2	2	2	Washer, Thrust
24	341610	1	1	1	Gasket, Gear Housing Cover
25	500416	1	1	1	Gear Housing Cover (Incl Ref. 26, 27)
26	341581	1	1	1	Seal
27	341580	1	1	1	Bearing
28	400184	4	4	4	Screw, 5/16-18 x 3/4 Hex Hd Cap
28	446134	4	4	4	Lockwasher, 5/16 Med
30	269914	1	1	1	Cover, Gear Housing End
31	341621	1	1	1	Gasket, End Cover
32	400184	2	2	2	Screw, 5/16-18 x 3/4 Hex Hd Cap
33	446134	2	2	2	Lockwasher, 5/16 Med
34	472203	1	1	1	Plug, 1/4 NPT Sq. Hd Pipe
35	126307	1	1	1	Fan Assembly
36	461408	2	2	2	Pin, 1/4 x 1/2 Roll
37	341661	1	1	1	Bearing, Fan Shaft
38	341582	2	2	2	Flange
38	440078	3	3	3	Bolt, 5/16-18 x 3/4 Sh Nk Carriage
40	446134	3	3	3	Lockwasher, 5/16 Med
41	443106	3	3	3	Nut, 5/16-18 Hex
42	118271	1			Pulley, Driven
	330580		1	1	Pulley, Driven

Ref. No.	Part No.	Quan.			Description
		52612	52625	52630	
43	120461	1	1		Auger Assem, R.H.
	121524			1	Auger Assem, R.H.
44	121464	1	1		Auger Assem, L.H.
	121523			1	Auger Assem, L.H.
45	342449	2	2	2	Bolt, Auger Shear
46	444708	2	2	2	Nut, 1/4-20 Hex Gripco c/Loc
47	352041	2	2	2	Bushing, Auger
48	352042	2	2	2	Retainer, Auger Bushing
48	440040	8	8	8	Bolt, 1/4-20 x 5/8 Sh Nk Carriage
50	446130	8	8	8	Lockwasher, 1/4 Hwy
51	443102	8	8	8	Nut, 1/4-20 Hex
52	341604	1	1	1	Support, Gear Box
53	400196	1	1	1	Screw, 5/16-18 x 7/8 Hex Hd Cap
54	453009	1	1	1	Washer, 5/16 SAE Flat
55	446134	3	3	3	Lockwasher, 5/16 Med
56	440078	2	2	2	Bolt, 5/16-18 x 3/4 Sh Nk Carriage
57	443106	2	2	2	Nut, 5/16-18 Hex
58	130020	1	1	1	Discharge Chute Assembly
59	154875	1	1	1	Deflector and Handle Assembly
60	335676	1	1	1	Shield, Chute
62	446134	2	2	2	Lockwasher, 5/16 Med
63	443106	2	2	2	Nut, 5/16-18 Hex
64	500565	1	1	1	Retainer, Discharge Chute
65	445272	2	2	2	Nut, Tinnerman, Guard Retaining
66	445516	2	2	2	Nut, 3/16 Pal
67	348356	1	1	1	Spring, Chute Retainer
68	163941	1	1	1	Rod, Fork & Knuckle Assem
69	461353	1	1	1	Pin, 1/8 x 3/4 Roll
70	352073	1	1	1	Sprocket, Chute Adjusting
71	401050	2	2	2	Screw, 5/16-18 x 5/8 Hex Hd
72	341727	2	2	2	Washer, Nylon
73	454024	2	2	2	Washer, Cupped Spring
74	471214	2	2	2	Grease Fitting, Auger Tube
75	444713	2	2	2	Nut, 5/16-18 Hex Gripco c/Loc
76	343573	2	2	2	Decal, Caution
77	453009	2	2	2	Washer, 5/16 Flat, Support Mounting
78	352611	1	1	1	Strap, Spring Retaining
79	154874	1	1	1	Chute Rod Support Assem
80	440078	2	2	2	Bolt, 5/16-3/4 Carriage, Support Mounting

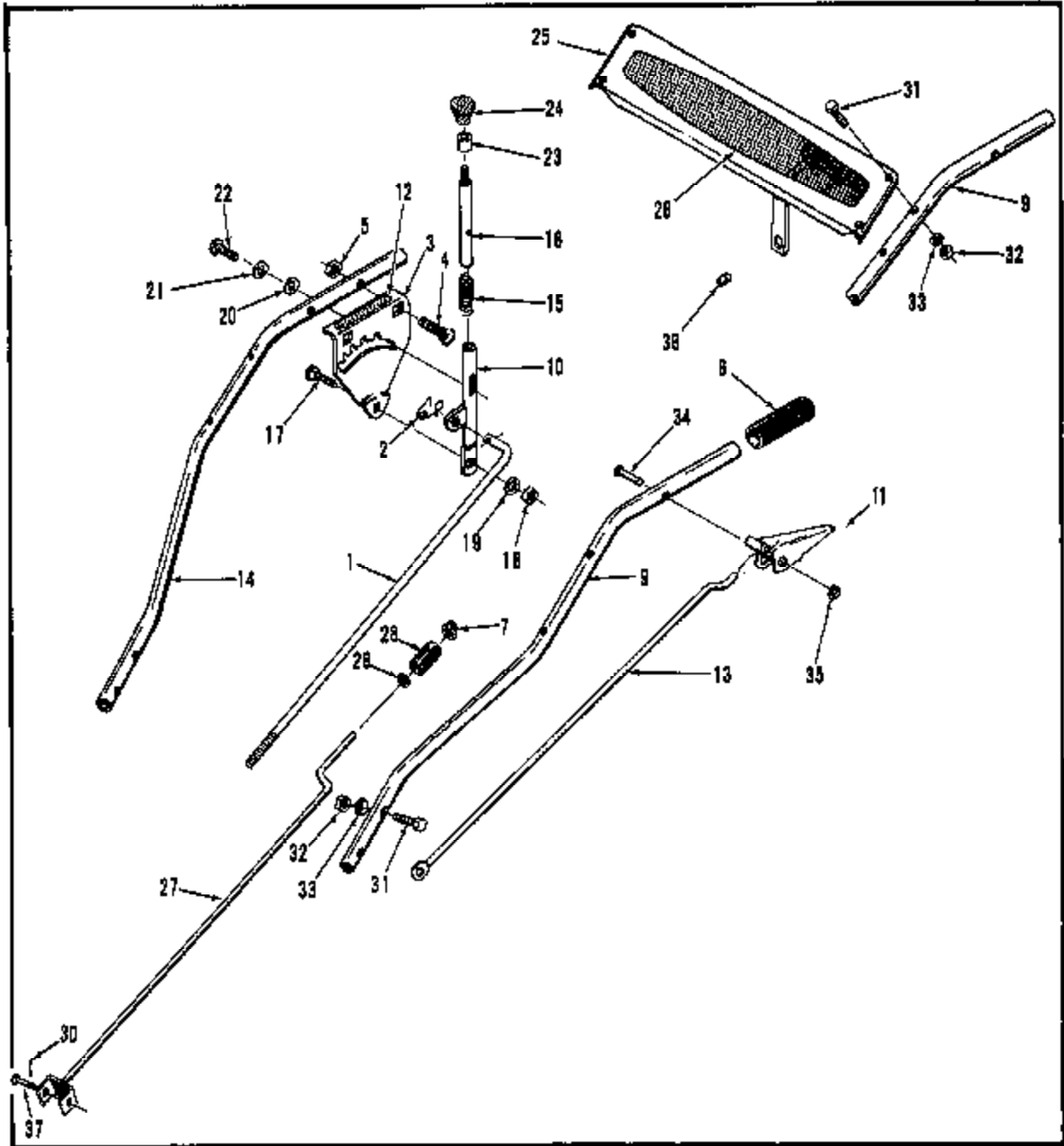


FIGURE 3. HANDLE

PARTS LIST - HANDLE

Ref. No.	Part No.	Quan.			Description
		52612	52625	52630	
1	343500	1	1	1	Rod, Speed Control, Upper
2	341655	1	1	1	Spring, Speed Control Rod
3	352072	1	1	1	Quadrant, Speed Control
4	440048	2	2	2	Bolt, 1/4-20 x 1-1/4 Sh Nk Carriage
5	444708	2	2	2	Nut, 1/4-20 Hex Gripco c/Loc
6	343526	2	2	2	Grip, Handle
7	445258	1	1	1	Nut, Push Cap, Tinnerman
9	330657	1	1	1	Handle, L.H.
10	153938	1	1	1	Handle, Speed Control Assesm
11	159184	1	1	1	Control Handle Grip Assesm
12	352480	1	1	1	Decal, Speed Control
13	352211	1	1	1	Rod, Clutch Control, Upper
14	330658	1	1	1	Handle, R.H.
15	315344	1	1	1	Spring
16	348481	1	1	1	Plunger, Speed Control
17	440080	1	1	1	Bolt, 5/16-18 x 7/8 Sh Nk Carriage
18	444718	1	1	1	Nut, 5/16-18 Hex Gripco c/Loc
19	454024	1	1	1	Washer, Hubbard
20	343495	1	1	1	Washer, Control (Nylon)
21	453023	1	1	1	Washer, 1/4 SAE

Ref. No.	Part No.	Quan.			Description
		52612	52625	52630	
22	343496	1	1	1	Screw, Control
23	341701	1	1	1	Cap, Speed Selector
24	342582	1	1	1	Knob, Control
25	130006	1	1	1	Panel Assembly, Handle
26	328033	1	1	1	Decal, Name
	330571			1	Decal, Name
27	159519	1	1	1	Chute Adjusting Rod Assembly
28	344418	1	1	1	Handle, Chute Rod
29	445257	1	1	1	Retainer, Tinnerman, Positioner
30	460012	1	1	1	Pin, 3/32 x 5/8 Cotter
31	400192	8	8	8	Screw, 5/16-18 x 1-1/2 Hex Hd Cap
32	444718	8	8	8	Nut, 5/16-18 Hex Gripco c/Loc
33	343525	8	8	8	Washer, Handle Mounting
34	463600	1	1	1	Rivet, 1/4 x 1-5/8 Rd Hd
35	445516	1	1	1	Nut, Pal #PW 25009
36	342294	1	1	1	Bushing, Control Rod
37	481483	1	1	1	Pin, 5/16 x 1-1/4 Clevis

IMPORTANT

DO NOT MISLAY OR LOSE YOUR PARTS LIST AS THIS IS THE ONLY MEANS YOU HAVE OF ORDERING REPLACEMENT PARTS ACCURATELY.

See your Owner's Manual for 'Guaranty' and 'How To Order Repair Parts'

A Careful Operator

**IS THE BEST INSURANCE
AGAINST AN ACCIDENT.**

— NATIONAL SAFETY COUNCIL



JACOBSEN MANUFACTURING COMPANY
A Member Company of Allegheny Ludlum Industries
RACINE, WISCONSIN 53403

Litho in U.S.A. 672