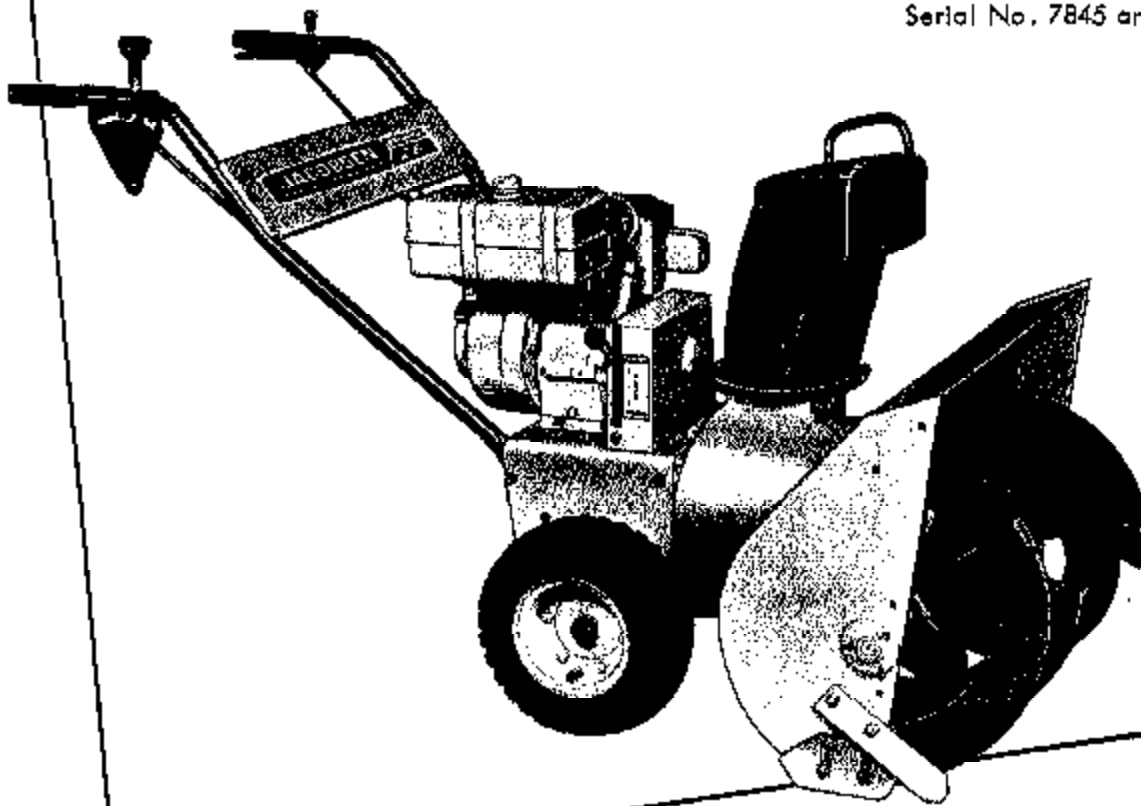


**PARTS LIST**

**for JACOBSEN  
IMPERIAL 2 STAGE  
SNOW JET**

No. 52601  
Serial No. 7845 and Up



JACOBSEN MANUFACTURING COMPANY  
RACINE, WISCONSIN 53403

Part No. 344428

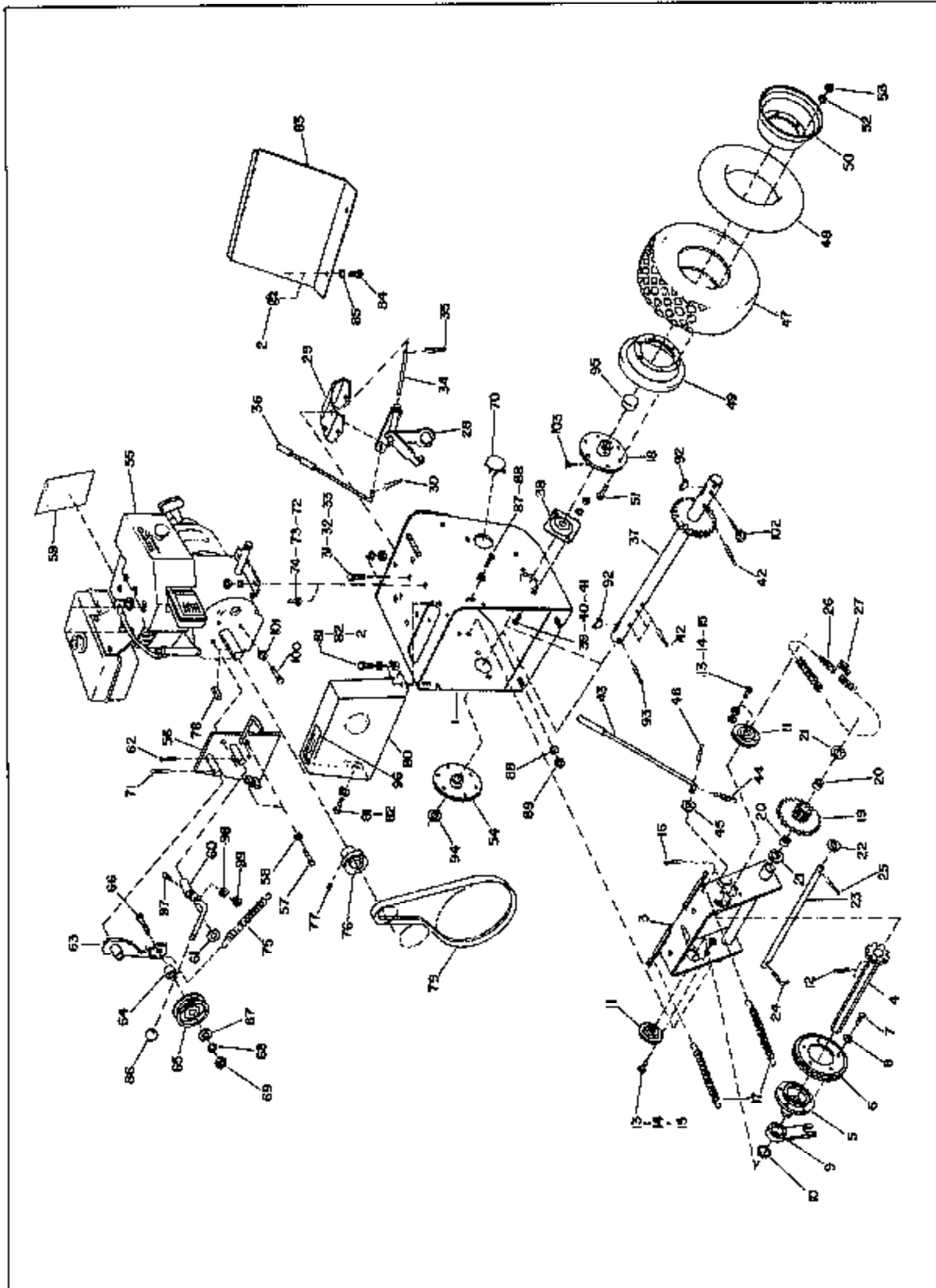


Figure 1. Engine and Wheels

Ref. No.	Part No.	Quan.	Description
1	119160	1	Tractor Frame Assembly
2	445236	2	Nut, 5/16-18 - Retainer Belt Guard and Back Cover
3	126425	1	Disc Bracket Assembly
4	153930	1	Shaft and Sprocket Assembly
5	239008	1	Hub - Drive Disc
6	153075	1	Drive Wheel
7	400180	5	Screw, 5/16-18x1 1/2 Hex Hd. Cap - Drive Wheel Mtg.
8	448184	6	Lockwasher, 5/16 Med. - Drive Wheel Mtg.
9	153936	1	Sleeve and Bearing Assembly
10	458017	1	Ring, Tru-arc 5100-88, Retaining - Drive Wheel
11	343478	2	Bearing - Disc Shaft
12	480028	3	Pin, 1/8x1 Cotter - Disc Shaft Bearing
13	400184	6	Screw, 5/16-18x3/4 Hex Hd. Cap - Disc Shaft Bearing Mtg.
14	448184	6	Lockwasher, 5/16 Med. - Disc Shaft Bearing Mtg.
15	443106	6	Nut, 5/16-18 Hex - Disc Shaft Bearing Mtg.
16	460024	1	Pin, 1/8x1 1/2 Cotter - Disc Bracket Spring Mtg.
17	344428	2	Spring - Disc Bracket
18	154428	1	Wheel Hub Assembly - L.H.
19	153981	1	Pinion and Sprocket Assembly (incl. Bearings Ref. 20)
20	343470	2	Bearing - Roller
21	343473	2	Washer, Thrust (Each side of Pinion and Sprocket Assy.)
22	311710	AR*	Washer - Pivot Shaft (Place between Pinion and Side Plate if end play exceeds 1/16").
23	343474	1	Shaft - Disc Bracket Pivot
24	328238	1	Pin - Anti-Rotation
25	480048	1	Pin, 5/16x1 Cotter - Pivot Shaft Mtg.
26	343468	1	Chain - Traction (incl. Link Ref. 27)
27	470508	1	Service Link
28	126254	1	Speed Linkage Assembly
29	331718	1	Support - Linkage
30	480028	1	Pin, 1/8x3/4 Cotter
31	440076	2	Bolt, 5/16-18x3/4 Sh. Nk. Carriage - Speed Linkage Support
32	448184	2	Lockwasher, 5/16 Med. - Speed Linkage Support
33	448108	2	Nut, 5/16-18 Hex - Speed Linkage Support
34	343480	1	Pin - Pivot
35	460028	1	Pin, 1/8x3/4 Cotter - Pin and Linkage Mtg.
36	163944	1	Speed Control Rod Assembly
37	126497	1	Axle and Gear Assembly
38	343418	2	Bearing - Axle
39	440078	4	Screw, 5/16-18x3/4 Sh. Nk. Carriage - Axle Bearing
40	448184	4	Lockwasher, 5/16 Med. - Axle Bearing
41	448108	4	Nut, 5/16-18 Hex - Axle Bearing
42	460080	4	Pin, 1/8x1-1/4 Cotter - Axle to Frame and Wheel Mtg.
43	154396	1	Rod and Coupling Assembly
44	344425	1	Spring - Extension
45	463023	2	Washer, 1/4 SAE - Clutch Rod to Bracket
46	460010	1	Pin, 3/32x1 1/2 Cotter - Clutch Rod to Bracket
47	341705	2	Tire - Pneumatic
48	341704	2	Tube - Inner
49	331348	2	Rim - Inside
50	331349	2	Rim - Outside
51	400260	12	Screw, 3/8-16x7/8 Hex Hd. Cap - Tire Rim Joining

Ref. No.	Part No.	Quan.	Description
52	448140	12	Lockwasher, 3/8 Med. - Tire Rim Joining
53	443110	12	Nut, 3/8-18 Hex - Tire Rim Joining
54	163933	1	Wheel Hub Assembly - R.H. Engine Assembly
55		1	
56	126428	1	Idler Plate Assembly
57	400222	2	Screw, 5/16-24x3/4 Hex Hd. Cap - Idler Plate Mtg.
58	446134	2	Lockwasher, 5/16 Med. - Idler Plate Mtg.
59	343567	1	Decal - Instruction
60	154404	1	Unit Clutch Assembly
61	454012	1	Washer, Shakeproof - Unit Clutch Mtg.
62	480028	1	Pin, 1/8x3/4 Cotter - Unit Clutch Mtg.
63	154405	1	Idler Arm Assembly
64	343459	1	Spacer
65	344439	1	Pulley - Idler
66	490259	1	Screw, 3/8-16x1-3/4 Hex Hd. Cap - Pulley Mtg.
67	458011	2	Washer, 3/8 SAE - Pulley Mounting
68	446140	1	Lockwasher, 3/8 Med. - Pulley Mtg.
69	443110	1	Nut, 3/8-18 Hex - Pulley Mtg.
70	323882	1	Plug - Tractor Frame
71	450026	1	Pin, 1/8 x 3/4, Cotter
72	440114	4	Screw, 3/8-16x3/4 Sh. Sq. Nk. Carriage - Engine Mtg.
73	446140	4	Lockwasher, 3/8 Med. - Engine Mtg.
74	443110	4	Nut, 3/8-18 Hex - Engine Mtg.
75	344442	1	Spring - Idler Arm
76	289004	1	Pulley - Engine
77	415521	1	Screw, 5/16-18x3/8 Soc. Hd. Cup Pt. Set - Engine Pulley Mtg.
78	306988	1	Key - Engine Pulley Mtg.
79	331325	1	Belt - Drive
80	154008	1	Belt Guard Assembly
81	400182	2	Screw, 5/16-18x5/8 Hex Hd. Cap - Belt Guard Mtg.
82	448134	2	Lockwasher, 5/16 Med. - Belt Guard Mtg.
83	329021	1	Cover - Back
84	490182	2	Screw, 5/16-18x5/8 Hex Hd. Cap - Back Cover Mtg.
85	446134	2	Lockwasher, 5/16 Med. - Back Cover Mtg.
86	329731	1	Knob - Unit Idler Handle
87	490259	2	Screw, 3/8-16x3/4 Hex Hd. Cap - Auger Housing to Tractor
88	446140	4	Lockwasher, 3/8 Med. - Auger Housing to Tractor
89	443110	2	Nut, 3/8-18 Hex - Auger Housing to Tractor
90	463017	2	Key, 3/16x3/4 Woodruff - Wheel Mtg.
91	460030	1	Pin, 1/8x1-1/4 Cotter - Wheel Mtg. R.H.
92	343118	1	Washer - Wheel Mtg. R. H.
93	343196	1	Cap - Hub
94	343530	1	Decal - Traction Clutch
95	343462	2	Follower
96	446134	1	Lockwasher - 5/16 Med.
97	443108	1	Nut 5/16 - 18 Hex.
98	400228	1	Screw 5/16 - 24x1-1/4 Hex Hd Cap
99	443108	1	Nut 5/16 - 24 Hex
100	473134	1	Knkpin-Danuser 1600, LH Wheel Mounting
101			Fitting, Grease, 45"
102			
103	471227	1	

\*AR - As Required

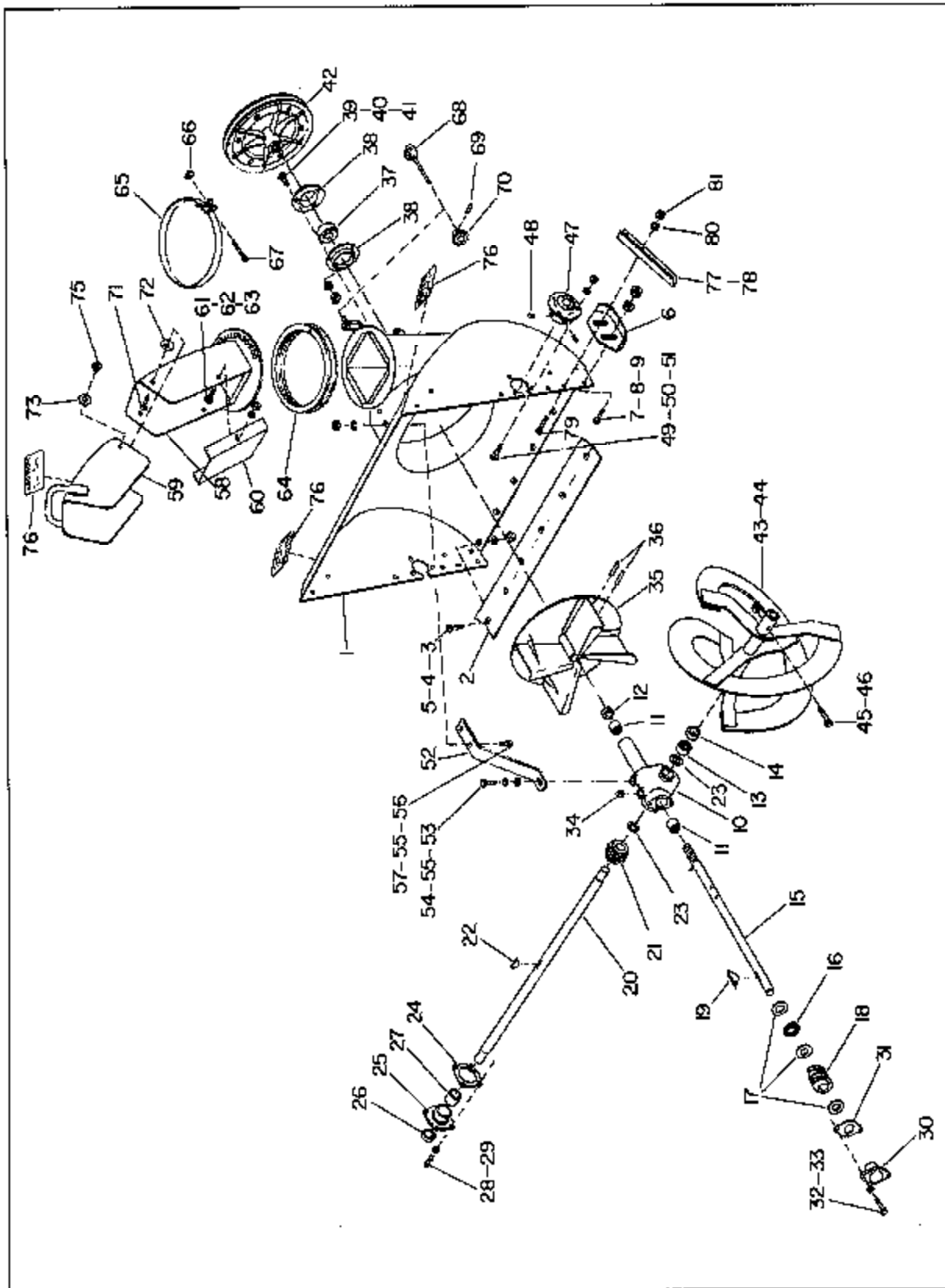


Figure 2. Auger

**AUGER**

Ref. No.	Part No.	Quan.	Description
1	114060	1	Auger Housing Assembly
2	331704	1	Blade - Scraper
3	40258D	6	Screw, 1/4-20 x 5/8 Slotted Flat Hd. - Scraper Blade Mtg.
4	443102	6	Nut, 1/4-20 Hex - Scraper Blade Mtg.
5	454031	6	Washer, Hubbard #CSW-189-863 - Scraper Blade Mtg.
6	341598	2	Skid - Auger
7	441879	4	Bolt, 5/16-18 x 5/8 Reg. Carriage Skid Mtg.
8	454027	4	Washer, 5/16 Shakeproof - Skid Mtg.
9	443106	4	Nut, 5/16-18 Hex - Skid Mtg.
10	126023	1	Gear Housing Assembly
11	321283	2	Bearing - Fan Shaft
12	321284	1	Seal - Fan Shaft
13	341580	1	Bearing - Auger Shaft
14	341561	1	Seal - Auger Shaft
15	351337	1	Shaft - Fan
16	341564	1	Bearing - Thrust
17	341583	3	Race - Thrust Bearing
18	341606	1	Gear, Worm
19	463113	1	Key
20	331705	1	Shaft - Auger
21	341608	1	Wheel, Worm
22	463033	1	Key, 1/4 x 7/8 Woodruff - Worm Wheel Mtg.
23	341608	2	Washer - Thrust
24	341610	1	Gasket - Gear Housing Cover
25	500415	1	Gear Housing Cover W/26,27,28
26	341581	1	Seal
27	341560	1	Bearing
28	400184	4	Screw, 5/16-18 x 3/4 Hex Hd. Cap - Gear Hsg. Cover Mtg.
29	446134	4	Lockwasher, 5/16 Med. - Gear Housing Cover Mtg.
30	259014	1	Cover - Gear Housing End
31	341521	1	Gasket - End Cover
32	400184	2	Screw, 5/16-18 x 3/4 Hex Hd. Cap - Gear Housing End Cover
33	446134	2	Lockwasher, 5/16 Med. - Gear Housing End Cover
34	472203	1	Plug, 1/4 NPT Sq. Hd. Pipe - Gear Housing
35	128307	1	Fan Assembly
36	461406	2	Pin, 1/4 x 1-1/2 - Roll Fan to Shaft Mtg.
37	341661	1	Bearing - Fan Shaft
38	341592	2	Flange - Fan Shaft Bearing
39	440078	3	Bolt, 5/16-18 x 3/4 Sh. Nk. Carriage - Fan Shaft Bearing
40	446134	3	Lockwasher, 5/16 Med. - Fan Shaft Bearing
41	443106	3	Nut, 5/16-18 Hex - Fan Shaft Bearing
42	232002	1	Pulley - Driven

Ref. No.	Part No.	Quan.	Description
43	118019	1	R.H. Auger Assembly
44	118020	1	L.H. Auger Assembly
45	342449	2	Bolt, Auger Shear
46	444708	2	Nut, 1/4-20 Hex Gripco Counter-lock - Auger to Shaft Mtg.
47	343496	2	Bearing - Auger Shaft
48	415556	4	Screw, 5/16-24 x 3/8 Soc. Hd. Cup Pt. Set - Auger Bearing Mtg.
49	440078	6	Bolt, 5/16-18 x 3/4 Sh. Nk. Carriage - Auger Bearing Mtg.
50	446134	6	Lockwasher, 5/16 Med. - Auger Bearing Mtg.
51	443106	6	Nut, 5/16-18 Hex - Auger Bearing Mtg.
52	341804	1	Support - Gear Box
53	400184	1	Screw, 5/16-18 x 7/8 Hex Hd. Cap - Gear Box Support
54	453009	1	Washer, 5/16 SAE - Gear Box Support
55	446134	3	Lockwasher, 5/16 Med. - Gear Box Support
56	440078	2	Bolt, 5/16-18 x 3/4 Sh. Nk. Carriage - Gear Box Support
57	443106	2	Nut, 5/16-18 Hex - Gear Box Support
58	126169	1	Discharge Chute Assembly
59	163950	1	Discharge Deflector Assembly
60	342451	1	Guard - Chute
61	440082	2	Bolt, 5/16-18 x 1/2 Sh. Nk. Carriage - Chute Guard to Chute Mtg.
62	446134	2	Lockwasher, 5/16 Med. - Chute Guard to Chute Mtg.
63	443106	2	Nut, 5/16-18 Hex - Chute Guard to Chute Mtg.
64	600504	1	Retainer - Discharge Chute
65	153956	1	Discharge Chute Band Assembly
66	445758	1	Nut, #10-24 Square
67	403719	1	Screw, #10-24 x 2-1/2 Fil. Hd. Mach.
68	163941	1	Rod, Fork and Knuckle Assembly
69	461359	1	Pin, 1/8 x 3/4 Roll - Chute Sprocket Mtg.
70	153101	1	Sprocket and Hub Assembly
71	401050	2	Screw, 5/16-18 x 5/8 Hex Hd. Cap - Deflector Mtg.
72	341717	2	Washer - Nylon Thrust
73	454024	2	Washer, Shakeproof - Deflector Mtg.
74	444718	2	Nut, 5/16-18 Hex Gripco Center-lock - Deflector Mtg.
75	348573	3	Decal - "Caution"
76	342461	1	Guard L.H. Auger
77	342460	1	Guard R.H. Auger
78	440076	4	Bolt, 5/16-18 x 5/8 Sh. Nk. Carriage - Guard Mtg.
79	443106	4	Lockwasher, 5/16 Med. - Guard Mtg.
80	446134	4	Nut, 5/16-18 Hex - Guard Mtg.

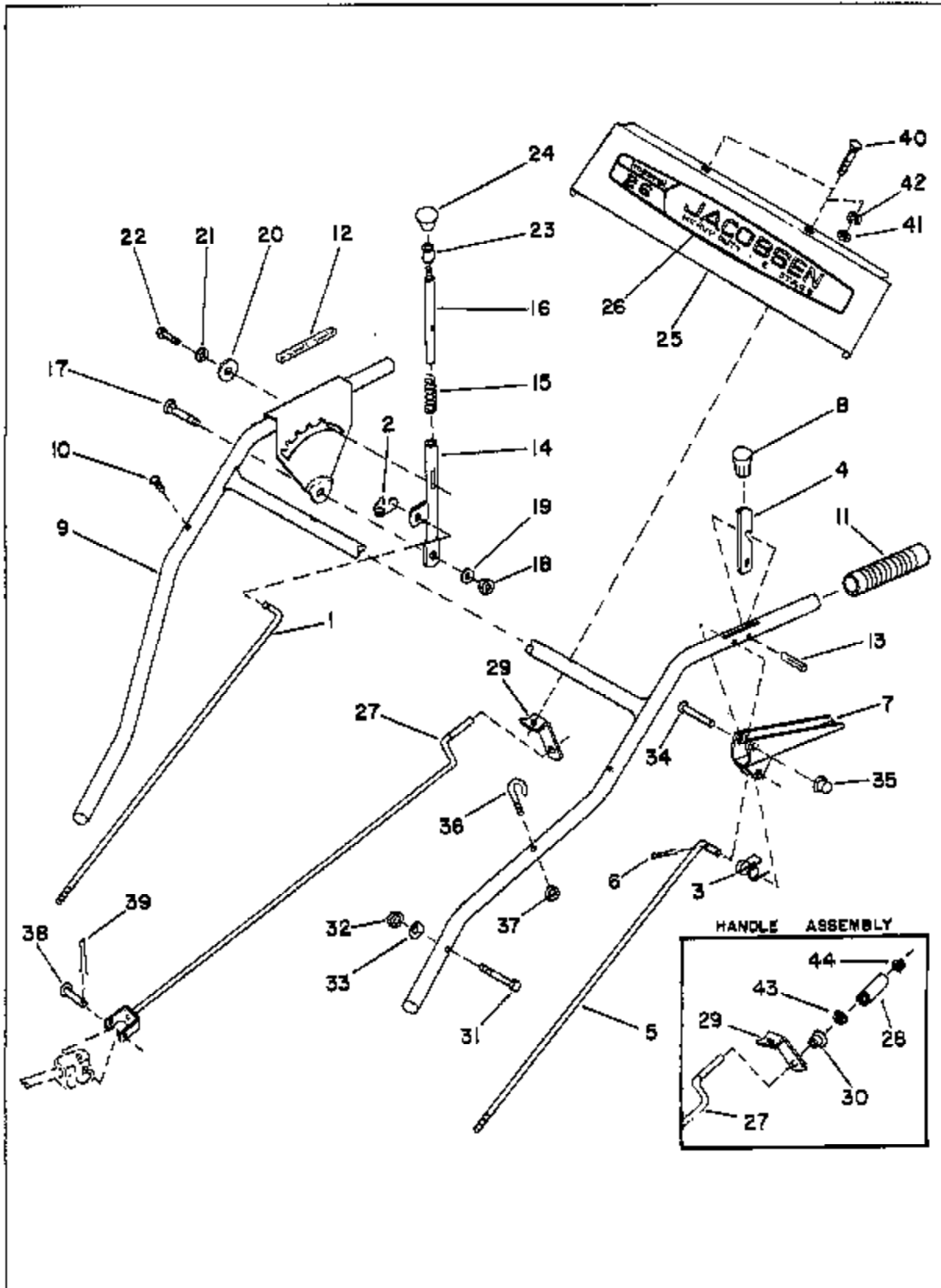


Figure 3. Handle

**HANDLES AND CONTROLS**

Ref. No.	Part No.	Quan.	Description
1	343600	1	Rod - Speed Control - Upper
2	341885	1	Spring - Speed Control Rod
			Anti-Rattle
3	342823	1	Spring - Release
4	343489	1	Catch - Clutch
5	343524	1	Rod - Clutch
6	480019	1	Pin, 3/32 x 1/2 Cotter - Clutch Rod Positioning
7	128298	1	Grip, Control Handle
8	343525	1	Knob - Catch
9	118195	1	Handle - Quadrant and Decal Assy. (incl. Ref. 10, 11, 12, 13)
10	489284	2	Screw, #10 x 1/2 Tapping - Panel Mtg.
11	342526	2	Grip - Handle
12	343528	1	Decal - Speed Selector
13	461387	1	Pin, 1/4 x 1 Roll - Control Mtg.
14	153938	1	Handle, Speed Control
15	315344	1	Spring
16	343481	1	Plunger - Speed Control
17	440080	1	Bolt, 5/16-18 x 7/8 Sh. Nk. Carriage - Speed Control Handle Mtg.
18	444718	1	Nut, 5/16-18 Hex Gripco Counterlock - Speed Control Handle Mtg.
19	484024	1	Washer, Hubbard CSQ 143542 - Speed Control Handle Mtg.
20	343485	1	Washer - Control (Nylon)
21	453023	1	Washer, 1/4 SAE
22	343496	1	Screw - Control
23	341701	1	Cap - Speed Selector
24	342862	1	Knob - Control
25	381716	1	Panel - Handle
26	329023	1	Decal - Jacobsen - Imperial

Ref. No.	Part No.	Quan.	Description
27	154384	1	Chute Adj. Rod Assembly (incl. Ref. 28, 29, 30)
28	344418	1	Knob - Chute Rod
29	344416	1	Bracket - Chute Adj. Rod
30	342394	1	Bushing - Control Rod
31	400192	4	Screw, 5/16-18 x 1-1/2 Hex Hd. Cap - Handle Mtg.
32	444718	4	Nut, 5/16-18 Hex Gripco Counterlock
33	343536	4	Washer - Handle Mtg.
34	463600	1	Rivet, 1/4 x 1-5/8 Rd. Hd. - Clutch Control Handle Assy. Mtg.
35	445518	1	Nut, Pal #PW25009 - Clutch Control Handle Assy. Mtg.
36	343555	1	Bolt, Eye - Starter Cord
37	444708	1	Nut, 1/4-20 Hex Gripco Counterlock - Eye Bolt to Handle Retaining
38	461468	1	Pin, 5/16 x 1-1/4 Clavis - Universal Joint Joining
39	480012	1	Pin, 3/32 x 5/8 Cotter - Universal Joint Joining
40	440088	2	Bolt, 5/16-18 x 1-3/4 Sh. Nk. Carriage - Chute Adj. Rod Brkt. to Handle Mtg.
41	443106	2	Nut, 5/16-18 Hex Gripco counterlock - Chute Adj. Rod Bracket to Handle Mtg.
42	466134	2	Lockwasher - 5/16 Mod.
43	445257	1	Retainer - Tinnerman - Handle Positioner
44	446268	1	Nut - Push Cap, Tinnerman

**IMPORTANT**

DO NOT MIDLAY OR LOSE YOUR PARTS LIST AS THIS IS THE ONLY MEANS YOU HAVE OF ORDERING REPLACEMENT PARTS ACCURATELY.

**INSTRUCTIONS FOR ORDERING PARTS**

To eliminate error and speed delivery:

1. Write your NAME and ADDRESS on your order PLAINLY.
2. Explain WHERE and HOW to make shipment.
3. Give PRODUCT NUMBER, NAME, and SERIAL NUMBER that is stamped on the NAME PLATE of your product.
4. Order from your PARTS LIST as this is the ONLY means we have of identifying the parts you need. Order by QUANTITY DESIRED, the PART NUMBER, and the DESCRIPTION OF PART.
5. Send your order to your nearest JACOBSEN DEALER, AUTHORIZED SERVICE STATION,

or AUTHORIZED JACOBSEN SERVICE DISTRIBUTOR as indicated in your SERVICE STATION DISTRIBUTOR'S DIRECTORY.

6. INSPECT ALL SHIPMENTS ON RECEIPT, if any parts are damaged or missing, file a claim with the carrier before accepting.
7. Do not return material to your nearest JACOBSEN DEALER, AUTHORIZED SERVICE STATION or AUTHORIZED JACOBSEN SERVICE DISTRIBUTOR without a letter of explanation. Make a list of all returned parts, show your name and address and include it with the shipment. TRANSPORTATION CHARGES MUST BE PREPAID.

**WARRANTY**

Jacobsen Consumer Products are guaranteed to the original retail purchaser against defective material and workmanship for **ONE YEAR** from date of purchase **OR FOR 45 DAYS IF USED FOR COMMERCIAL OR RENTAL PURPOSES.** The Jacobsen Manufacturing Company will replace defective parts free of charge f.o.b. any Jacobsen Service Station, except items warranted by the original manufacturer such as engines or other products that carry a separate warranty.

This warranty will not apply to Jacobsen products repaired or altered outside of a Jacobsen Service Station.

**CUSTOMER PLEASE NOTE**

Service related to normal maintenance items listed below under "Responsibility of the User" are not included under this warranty. Service required on these items will be furnished at reasonable prices.

**RESPONSIBILITY OF THE USER**

1. Adjustments to carburetor, ignition points or spark plug.
2. Adjustments made necessary through normal operation.
3. Sharpening of blades.
4. Failures resulting from accidental damage, misuse, improper care, negligence, or not lubricating properly.

The placing upon a Jacobsen product of any part or attachment not sold or approved by the Company shall void the warranty.

The company reserves the right to incorporate any changes in design without obligation to make these changes on units previously sold.

**JACOBSEN MANUFACTURING COMPANY**

*A Careful Operator*

**IS THE BEST INSURANCE  
AGAINST AN ACCIDENT.**

— NATIONAL SAFETY COUNCIL



**JACOBSEN MANUFACTURING COMPANY  
RACINE, WISCONSIN 53403**

LITHO IN U.S.A.

# SUPPLEMENTARY OWNER'S MANUAL AND PARTS LIST FOR IMPERIAL 26 SNOW THROWER HEAVY DUTY - TWO STAGE

NO. 52602

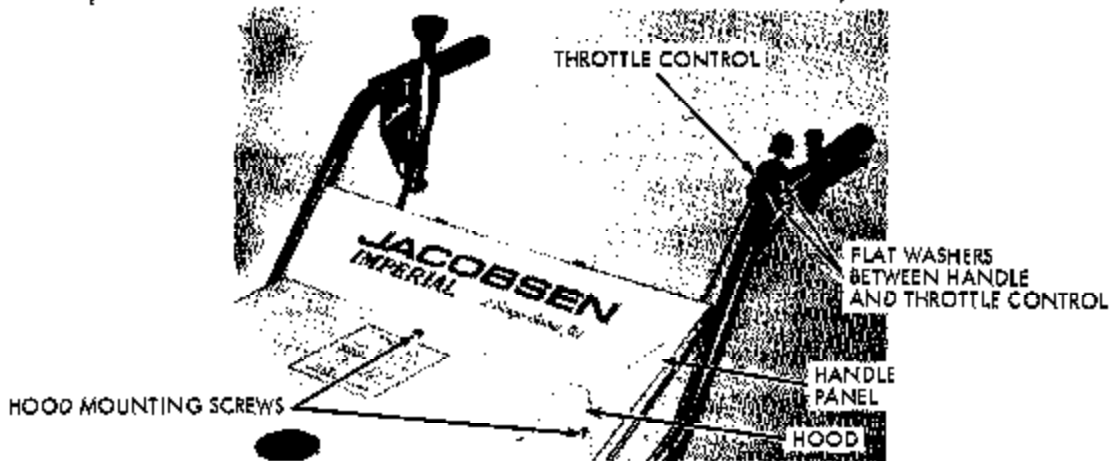
SERIAL NO. 1601 AND UP

**NOTE**

This sheet must accompany Owner's Manual Part Nos. 343533 and 344427, and Parts List Part Nos. 343534 and 344428.

*52601  
1601-1700*

*52601 7845 2 up*



All instructions in the Owner's Manual apply to your machine. Follow these additional assembly instructions carefully.

**HANDLE PANEL TO HOOD**

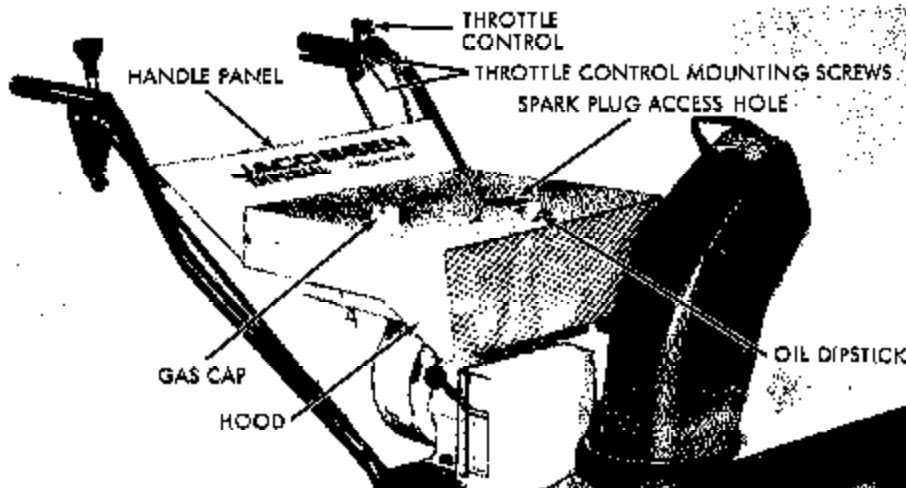
When fastening the handle to the traction housing, make certain the lip of the handle panel is positioned inside of the hood. Before tightening the handle to the traction housing, align the three holes in the panel with the holes in the hood. Insert three screws, 1/4" x 1/2", through the holes. Add lockwashers and nuts to the screws and tighten the screws securely. Tighten the handle securely to the traction housing.

**THROTTLE CONTROL**

Remove the two screws and flat washers from the left hand side of the handle. Insert the two screws through the holes in the throttle control. Add the two flatwashers to the screws. Align and turn the screws securely into the holes in the handle.

**NOTE**

It is important that the flat washers are between the throttle control and handle to insure proper and smooth operation of the control lever.



### PARTS LIST

The following parts listed in Parts List Nos. 343534 and 344428 are not used in 52602 Snow Jet (Export).

Fig. No. 1	Ref. 55	Engine Assembly Tecumseh H-60 6H.P.
Fig. No. 3	Ref. 10	(2) Screw - Panel Mtg.
	Ref. 25	(1) Panel - Handle
	Ref. 28	(1) Decal - Name
	Ref. 9	(1) Handle - Quadrant & Decal Ass'y.

The following parts are used on No. 52602 Imperial Snow Jet (Export only)

Ref. No.	Part No.	Quan.	Description
1		1	Engine Assembly - Tecumseh 6H.P. #60 Snow King Convertible
2	153415	1	Hood Support Assembly
3	310690	1	Spacer - Hood Support Brkt. Mtg.
4	342674	1	Grommet - Plug Wire Hole Hood Support
5	128406	1	Throttle Control Assembly
6	119112	1	Engine Hood Assembly
7	403614	2	Screw, 1/4-20 x 1/2 Pan Hd. - Hood Mtg.
8	446128	2	Lockwasher, 1/4 Med. - Hood Mtg.
9	409230	2	Screw, #10 x 1 Rd. Hd. Throttle Control Mtg.
10	458002	2	Washer, #10 SAE Throttle Control Mtg.
11	329112	1	Hood - Rear Engine
12	403614	3	Screw, 1/4-20 x 1/2 Pan Hd. - Hood to Panel Mtg.
13	446128	3	Lockwasher, 1/4-Med. - Hood to Panel Mtg.
14	443102	3	Nut, 1/4-20 Hex - Hood to Panel Mtg.
	119195	1	Handle - Quadrant and Decal Ass'y.
	328206	1	Decal - "Oil"
	341698	1	Decal - "Gasoline"
		1	Decal - Engine Operating Instructions (Furnished by Eng. Mfg.)
		1	Decal - "Choke" (Furnished by Eng. Mfg.)