

PARTS LIST

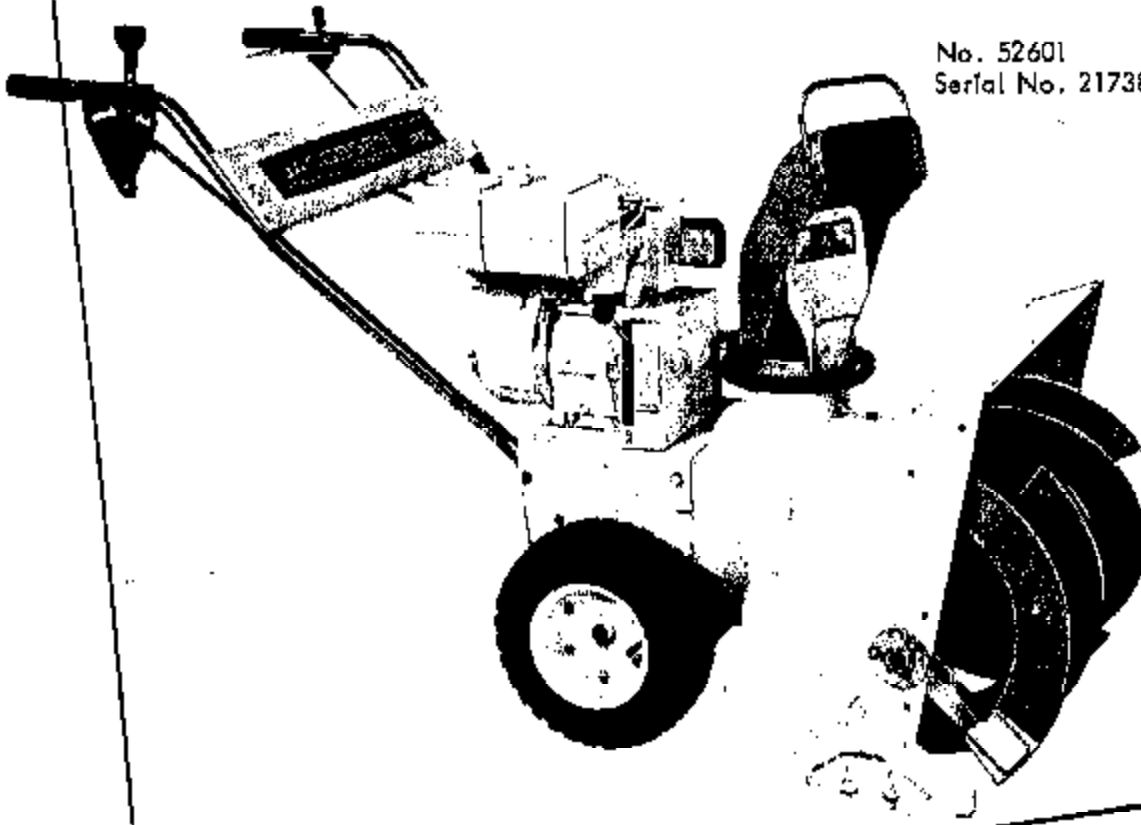
RP220
JUN 1462 (NO SNOWS)

for

JACOBSEN

IMPERIAL 2 STAGE SNOW THROWER

No. 52601
Serial No. 21738 and Up



JACOBSEN MANUFACTURING COMPANY
RACINE, WISCONSIN 53403

Part No. 345404

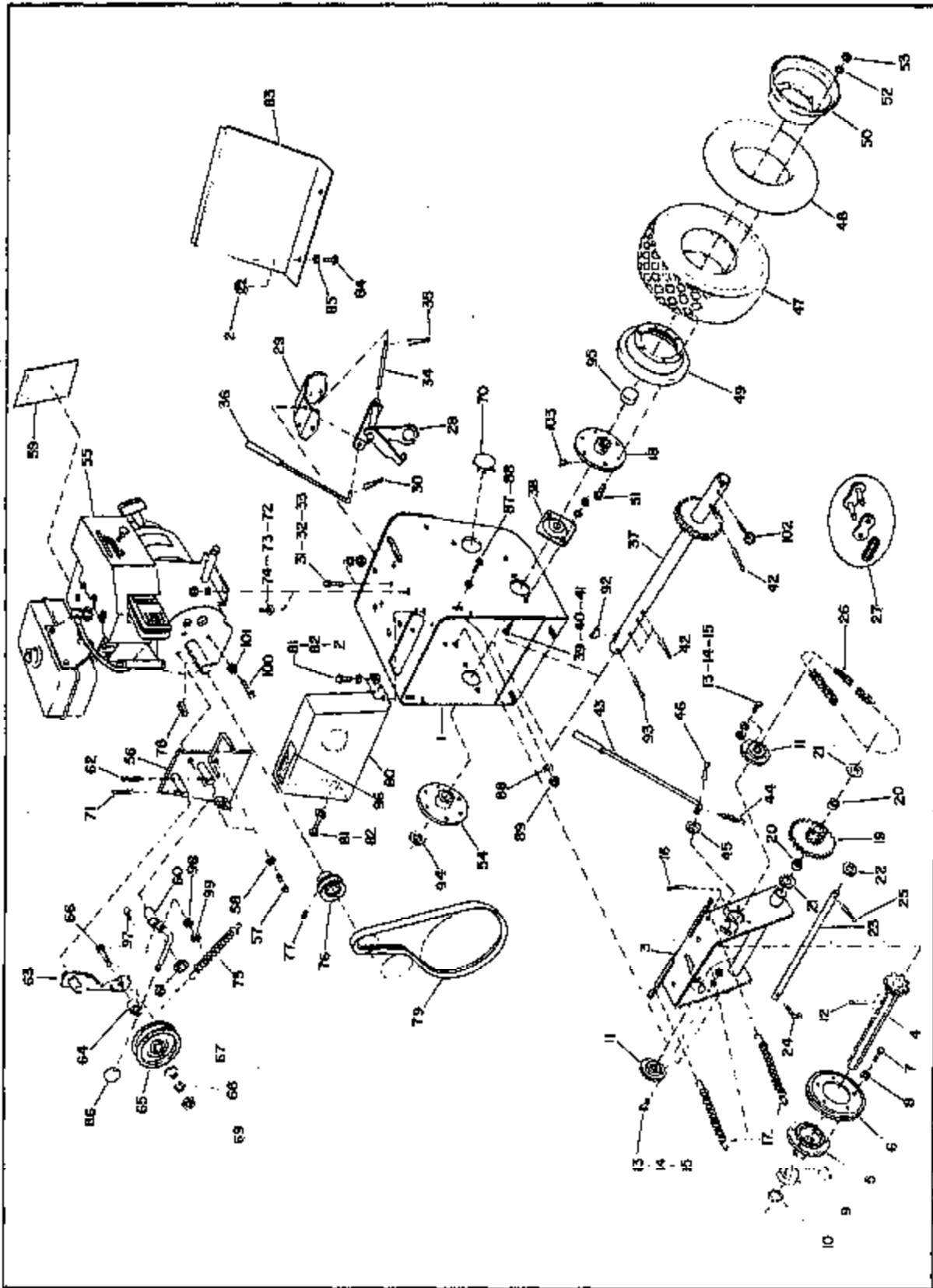


FIGURE 1. ENGINE AND WHEELS

PARTS LIST - ENGINE AND WHEELS

Ref. No.	Part No.	Quan.	Description	Ref. No.	Part No.	Quan.	Description
1	119150	1	Tractor Frame Assembly	52	440140	12	Lockwasher, 3/8 Med. - Tire Rim Joining
2	445235	3	Nut, 5/16-18 - Retainer Ball Shield and Brake Cover	53	443110	12	Nut, 3/8-16 Hex - Tire Rim Joining
3	126426	1	Disc Bracket Assembly	54	153932	1	Wheel Hub Assembly - R.H. Engine Assembly
4	163930	1	Shaft and Sprocket Assembly	55		1	Idler Plate Assembly
5	239003	1	Hub - Drive Disc	56	126428	1	Screw, 5/16-24 x 3/4 Hex Hd. Cap - Idler Plate Mtg.
6	153075	1	Drive Wheel	57	400222	2	Lockwasher, 5/16 Med. - Idler Plate Mtg.
7	400180	5	Screw, 5/16-18 x 1/2 Hex Hd. Cap - Drive Wheel Mtg.	58	440134	2	Decal - Instruction
8	440134	5	Lockwasher, 5/16 Med. - Drive Wheel Mtg.	59	343667	1	Unit Clutch Assembly
9	153936	1	Sleeve and Bearing Assembly	60	164404	1	Washer, Shakeproof - Unit Clutch Mtg.
10	468017	1	Ring, Tru-arc, Retaining - Drive Wheel	61	654012	1	Pin, 1/8 x 3/4 Cotter - Unit Clutch Mtg.
11	343475	2	Bearing - Disc Shaft	62	460026	2	Idler Arm Assembly
12	480028	3	Pin, 1/8 x 1 Cotter - Disc Shaft Bearing	63	154405	1	Spacer
13	400184	0	Screw, 5/16-18 x 3/4 Hex Hd. Cap - Disc Shaft Bearing Mtg.	64	343459	1	Pulley - Idler
14	440134	0	Lockwasher, 5/16 Med. - Disc Shaft Bearing Mtg.	65	344439	1	Screw, 3/8-16 x 1-3/4 Hex Hd. Cap - Pulley Mtg.
15	443106	6	Nut, 5/16-18 Hex - Disc Shaft Bearing Mtg.	66	400268	2	Washer, 3/8 SAE - Pulley Mounting
16	460024	1	Pin, 1/8 x 1/2 Cotter - Disc Bracket Spring Mtg.	67	463011	1	Lockwasher, 3/8 Med. - Pulley Mtg.
17	344426	2	Spring - Disc Bracket	68	440140	1	Nut, 3/8-16 Hex - Pulley Mtg.
18	104877	1	Wheel Hub Assembly - L.H.	69	443110	1	Plug - Tractor Frame
19	153931	1	Piston and Sprocket Assembly (incl. Ref. 20)	70	323502	1	Pin, 1/8 x 3/4, Cotter
20	243470	2	Bearing - Roller	71	480028	1	Screw, 5/8-18 x 3/4 Sh. Sq. Nk. Carriage - Engine Mtg.
21	343473	2	Washer, Thrust (Each side of Piston and Sprocket Assem.)	72	440114	4	Lockwasher, 3/8 Med. - Engine Mtg.
22	311710	AR*	Washer - Pivot Shaft (Plane between Piston and Side Plate if end play exceeds 1/16")	73	440140	4	Nut, 3/8-16 Hex - Engine Mtg.
23	343474	1	Shaft - Disc Bracket Pivot	74	443110	4	Spring - Idler Arm
24	328038	1	Pin - Anti-Rotation	75	344442	1	Pulley - Engine
25	460048	1	Pin, 3/16 x 1 Cotter - Pivot Shaft Mtg.	76	289004	1	Screw, 5/16-18 x 3/8 Soc. Hd. Cap - Engine Pulley Mtg.
26	343468	1	Chain - Traction (incl. Ref. 27)	77	415521	1	Key - Engine Pulley Mtg.
27	470593	1	Service Link	78	306968	1	Bolt - Drive
28	126284	1	Speed Linkage Assembly	79	331325	1	Belt Shield Assembly
29	331719	1	Support - Linkage	80	154008	1	Screw, 5/16-18 x 5/8 Hex Hd. Cap - Belt Shield Mtg.
30	460026	1	Pin, 1/8 x 3/4 Cotter	81	400189	2	Lockwasher, 5/16 Med. - Belt Shield Mtg.
31	440078	2	Bolt, 5/16-18 x 3/4 Sh. Nk. Carriage - Speed Linkage Support	82	440134	2	Cover - Back
32	440134	2	Lockwasher, 5/16 Med. - Speed Linkage Support	83	328021	1	Screw, 5/16-18 x 5/8 Hex Hd. Cap - Back Cover Mtg.
33	443106	2	Nut, 5/16-18 Hex - Speed Linkage Support	84	400182	2	Lockwasher, 5/16 Med. - Back Cover Mtg.
34	343480	1	Pin - Pivot	85	440134	2	Knob - Unit Idler Handle
35	460036	1	Pin, 1/8 x 3/4 Cotter - Pin and Linkage Mtg.	86	328731	1	Screw, 3/8-18 x 3/4 Hex Hd. Cap - Auger Housing to Tractor
36	183944	1	Speed Control Rod Assembly (incl. Ref. 30)	87	400258	2	Lockwasher, 3/8 Med. - Auger Housing to Tractor
37	126579	1	Axle and Gear Assembly	88	446140	4	Nut, 3/8-16 Hex - Auger Housing to Tractor
38	343415	2	Bearing - Axle	89	443110	2	Key, 3/16 x 5/4 Woodruff - Wheel Mtg.
39	440078	4	Screw, 5/16-18 x 3/4 Sh. Nk. Carriage - Axle Bearing	90	460030	1	Pin, 1/8 x 1-1/4 Cotter - Wheel Mtg. - R. H.
40	440134	4	Lockwasher, 5/16 Med. - Axle Bearing	91	343118	1	Washer - Wheel Mtg. - R. H.
41	443106	4	Nut, 5/16-18 Hex - Axle Bearing	92	343166	1	Cap - Hub
42	480030	4	Pin, 1/8 x 1-1/4 Cotter - Axle to Frame and Wheel Mtg.	93	343530	1	Decal - Traction Clutch
43	164888	1	Rod and Coupling Assembly	94	343482	2	Follower
44	344425	1	Spring - Extension	95	440134	1	Lockwasher - 5/16 Med.
45	453023	2	Washer, 1/4 SAE - Clutch Rod to Bracket	96	443108	1	Nut 5/16 - 18 Hex.
46	460010	1	Pin, 3/32 x 1/2 Cotter - Clutch Rod to Bracket	97	400228	1	Screw 5/16 - 24 x 1-1/4 Hex Hd Cap
47	341705	2	Tire - Pneumatic	98	443108	1	Nut 5/16 - 24 Hex
48	341704	2	Tube - Inner	99	473134	1	Knipin-Danuser 1600, Wheel Mounting - L. H.
49	331348	2	Rim - Inside	100			Fitting, Grease, 45° - L.H. Wheel Hub
50	331349	2	Rim - Outside	101			
51	400260	12	Screw, 3/8-16 x 7/8 Hex Hd. Cap - Tire Rim Joining	102			
				103	471227	1	

*AR - As Required

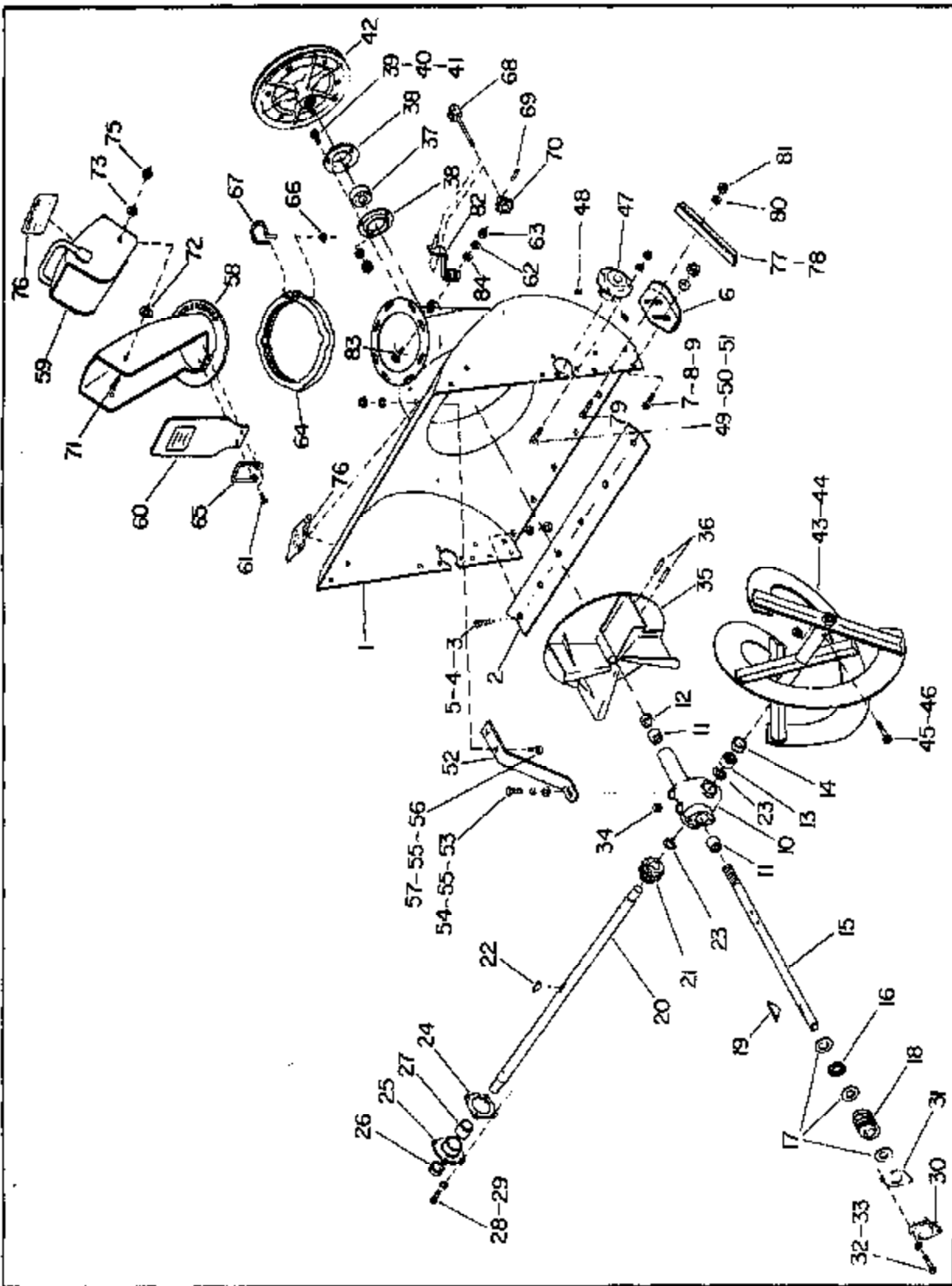


FIGURE 2. AUGER

PARTS LIST - AUGER

Ref. No.	Part No.	Quan.	Description
1	114076	1	Auger Housing Assembly
2	321704	1	Blade - Scraper
3	402580	8	Screw, 1/4-20 x 5/8 Slotted Flat Hd. - Scraper Blade Mtg.
4	443102	8	Nut, 1/4-20 Hex - Scraper Blade Mtg.
5	454031	6	Washer, Hubbard - Scraper Blade Mtg.
6	341598	2	Skid - Auger
7	441679	4	Bolt, 5/16-18 x 3/8 Reg. Carriage Skid Mtg.
8	454027	4	Washer, 5/16 Shakeproof - Skid Mtg.
9	443106	4	Nut, 5/16-18 Hex - Skid Mtg.
10	128023	1	Gear Housing Assembly (incl. Ref. 11, 12, 13, 14)
11	321293	2	Bearing - Fan Shaft
12	321294	1	Seal - Fan Shaft
13	341590	1	Bearing - Auger Shaft
14	341591	1	Seal - Auger Shaft
15	331337	1	Shaft - Fan
16	341584	1	Bearing - Thrust
17	341583	2	Race - Thrust Bearing
18	341608	1	Gear, Worm
19	463112	1	Key
20	331705	1	Shaft - Auger
21	341608	1	Wheel, Worm
22	463033	1	Key, 1/4 x 7/8 Woodruff - Worm Wheel Mtg.
23	341609	2	Washer - Thrust
24	341610	1	Gasket - Gear Housing Cover
25	500415	1	Gear Housing Cover (incl. Ref. 26, 27)
26	341551	1	Seal
27	341580	1	Bearing
28	400184	4	Screw, 5/16-18 x 3/4 Hex Hd. Cap - Gear Hsg. Cover Mtg.
29	446134	4	Lockwasher, 5/16 Med. - Gear Housing Cover Mtg.
30	289014	1	Cover - Gear Housing End
31	341621	1	Gasket - End Cover
32	400184	2	Screw, 5/16-18 x 3/4 Hex Hd. Cap - Gear Housing End Cover
33	446134	2	Lockwasher, 5/16 Med. - Gear Housing End Cover
34	472203	1	Plug, 1/4 NPT Sq. Hd. Pipe - Gear Housing
35	128307	1	Fan Assembly
36	461408	2	Pin, 1/4 x 1-1/2 - Roll Fan to Shaft Mtg.
37	341861	1	Bearing - Fan Shaft
38	341582	2	Flange - Fan Shaft Bearing
39	440078	3	Bolt, 5/16-18 x 3/4 Sh. Nk. Carriage - Fan Shaft Bearing
40	446134	3	Lockwasher, 5/16 Med. - Fan Shaft Bearing
41	443106	3	Nut, 5/16-18 Hex - Fan Shaft Bearing
42	239002	1	Pulley - Driven

Ref. No.	Part No.	Quan.	Description
43	119232	1	R.H. Auger Assembly
44	119233	1	L.H. Auger Assembly
45	342449	2	Bolt - Auger Bhsar
46	444708	2	Nut, 1/4-20 Hex Gripcoo Counterlock - Auger to Shaft Mtg.
47	343498	2	Bearing - Auger Shaft
48	418539	4	Screw, 5/16-24 x 3/8 Boc. Hd. Cup Pt. Set - Auger Bearing Mtg.
49	440078	6	Bolt, 5/16-18 x 3/4 Sh. Nk. Carriage - Auger Bearing Mtg.
50	446134	6	Lockwasher, 5/16 Med. - Auger Bearing Mtg.
51	443106	6	Nut, 5/16-18 Hex - Auger Bearing Mtg.
52	341604	1	Support - Gear Box
53	400188	1	Screw, 5/16-18 x 7/8 Hex Hd. Cap - Gear Box Support
54	453009	1	Washer, 5/16 SAE - Gear Box Support
55	446134	3	Lockwasher, 5/16 Med. - Gear Box Support
56	440078	2	Bolt, 5/16-18 x 3/4 Sh. Nk. Carriage - Gear Box Support
57	443106	2	Nut, 5/16-18 Hex - Gear Box Support
58	128580	1	Discharge Chute Assembly (incl. Ref. 60, 61, 66)
59	154875	1	Deflector and Handle Assm.
60	345399	1	Shield - Chute
61	464742	2	Rivet - Shield Mounting
62	446134	2	Lockwasher, 5/16 Med. - Support Mounting
63	443106	2	Nut, 5/16-18 Hex - Support Mtg.
64	500558	1	Retainer - Discharge Chute
65	345399	1	Brace - Chute Shield
66	446518	2	Nut, 3/16 Pal - Chute Retainer
67	345433	1	Spring - Chute Retainer
68	152941	1	Rod, Fork and Knuckle Assembly
69	461358	1	Pin, 1/8 x 3/4 Roll - Chute Sprocket Mtg.
70	153101	1	Sprocket and Hub Assembly
71	401050	2	Screw, 5/16-18 x 5/8 Hex Hd. - Deflector Mtg.
72	341717	2	Washer - Nylon Thrust
73	484024	2	Washer, Cupped Spring - Deflector Mtg.
74	444718	2	Nut, 5/16-18 Hex Gripcoo Centerlock - Deflector Mtg.
75	343573	3	Decal - "Caution"
76	342481	1	Shield, L. H. Auger
77	342450	1	Shield, R. H. Auger
78	440078	4	Bolt, 5/16-18 x 5/8 Sh. Nk. Carriage - Shield Mtg.
79	446134	4	Lockwasher, 5/16 Med. - Shield Mtg.
80	443106	4	Nut, 5/16-18 Hex - Shield Mtg.
81	154874	1	Chute Rod Support Assm.
82	440078	2	Bolt, 5/16-3/4 Carriage - Support Mtg.
83	453000	2	Washer, 5/16 Flat - Support Mtg.

PARTS LIST - HANDLE

Ref. No.	Part No.	Quan.	Description
1	343500	1	Rod - Speed Control - Upper
2	341555	1	Spring - Speed Control Rod
3	343823	1	Anti-Rattle
4	343489	1	Spring - Release
5	343524	1	Catch - Clutch
6	460010	1	Rod - Clutch
7	125293	1	Pin, 5/32 x 1/2 Cotter - Clutch
8	348525	1	Rod Positioning
9	118185	1	Grip, Control Handle
10	408254	2	Knob - Clutch Catch
11	343526	2	Handle, Quadrant and Decal
12	348528	1	Assem. (incl. Ref. 11, 12, 13)
13	481367	1	Screw, #10 x 1/2 Tapping - Panel
14	153938	1	Mtg.
15	315344	1	Grip - Handle
16	348481	1	Decal - Speed Selector
17	440080	1	Pin, 1/4 x 1 Roll - Control Mtg.
18	444718	2	Handle, Speed Control
19	456024	1	Spring
20	343485	1	Plunger - Speed Control
21	463023	1	Bolt, 5/16-18 x 7/8 Sh, Nk, Carr-
22	343486	1	idge - Speed Control Handle Mtg.
23	341701	1	Nut, 5/16-18 Hex Gripcoo Counter-
24	342582	1	lock - Speed Control Handle Mtg.
25	331715	1	Washer, Hubbard
26	329033	1	- Speed Control Handle Mtg.
			Washer - Control (Nylon)
			Washer, 1/4 SAE
			Screw - Control
			Cap - Speed Selector
			Knob - Control
			Panel - Handle
			Decal - Jacobsen - Imperial

Ref. No.	Part No.	Quan.	Description
27	154395	1	Chute Adj. Rod Assembly (incl. Ref. 28, 43, 44)
28	344416	1	Handle - Chute Rod
31	400192	4	Screw, 5/16-18 x 1-1/2 Hex Hd, Cap - Handle Mtg.
32	444718	4	Nut, 5/16-18 Hex Gripcoo Counter-
33	349535	4	lock
34	483500	1	Washer - Handle Mtg.
35	445515	1	Rivet, 1/4 x 1-5/8 Hd. Hd. -
36	451483	1	Clutch Control Handle Assem. Mtg.
38	480012	1	Nut, Pul #PW25009 - Clutch Con-
40	440088	2	rol Handle Assem. Mtg.
41	443108	2	Pin, 5/16 x 1-1/4 Clevis -
42	446134	2	Universal Joint
43	445257	1	Pin, 3/32 x 5/8 Cotter -
44	445258	1	Universal Joint
			Bolt, 5/16-18 x 1-3/4 Sh, Nk,
			Carriage - Chute Adj. Rod
			Brkt. to Handle Mtg.
			Nut, 5/16-18 Hex Gripcoo
			counterlock - Chute Adj. Rod
			Bracket to Handle Mtg.
			Lockwasher - 5/16 Med.
			Retainer - Tinnerman - Handle
			Positioner
			Nut - Push Cap, Tinnerman

IMPORTANT

DO NOT MISLAY OR LOSE YOUR PARTS LIST AS THIS IS THE ONLY MEANS YOU HAVE OF ORDERING REPLACEMENT PARTS ACCURATELY.

See your Owner's Manual for 'Warranty' and 'How To Order Repair Parts'

A Careful Operator

**IS THE BEST INSURANCE
AGAINST AN ACCIDENT.**

— NATIONAL SAFETY COUNCIL



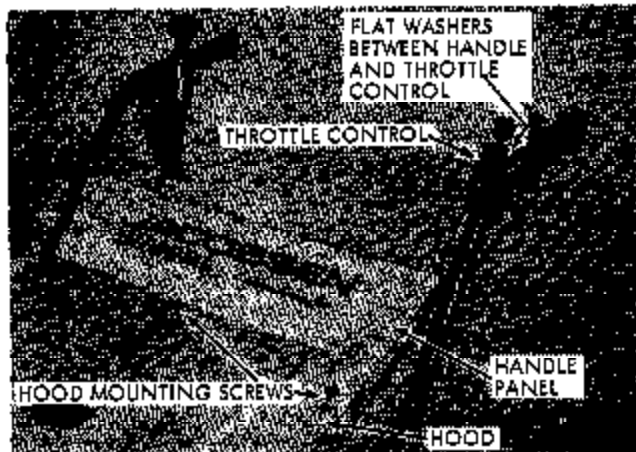
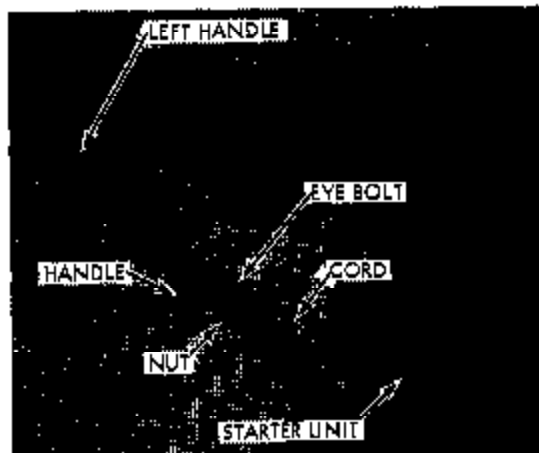
JACOBSEN MANUFACTURING COMPANY
RACINE, WISCONSIN 53403

SAMPLE
JUL 17 1968

SUPPLEMENTARY OWNER'S MANUAL AND PARTS LIST

**FOR IMPERIAL 26 SNOW THROWER - NO. 52602, SERIAL NO. 8701 & UP
HEAVY DUTY - TWO STAGE**

This sheet must accompany Owner's Manual Part No. 345403 and Parts List No. 345404. ⁵²⁶⁰¹ 21738



All instructions in the Owner's Manual apply to your machine. Follow these additional assembly instructions carefully.

STARTER CORD EYE BOLT

Pull the starter handle out and place U portion of eye bolt over the starter cord. Insert threaded end of eye bolt into lower mounting hole in left hand handle and insert short end of bolt into the upper hole as shown. Place nut on bolt and tighten securely.

HANDLE PANEL TO HOOD

When fastening the handle to the traction housing, make certain the lip of the handle panel is positioned inside of the hood. Before tightening the handle to the traction housing, align the three holes in the panel with the holes in the hood. Insert three screws,

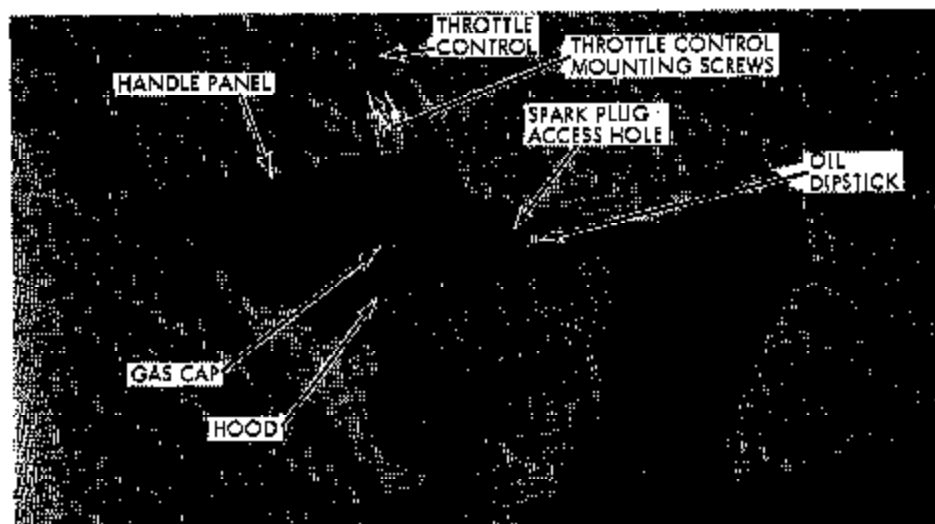
1/4" x 1/2", through the holes. Add lockwashers and nuts to the screws and tighten the screws securely. Tighten the handle securely to the traction housing.

THROTTLE CONTROL

Remove the two screws and flat washers from the left hand side of the handle. Insert the two screws through the holes in the throttle control. Add the two flatwashers to the screws. Align and turn the screws securely into the holes in the handle.

NOTE

It is important that the flat washers are between the throttle control and handle to insure proper and smooth operation of the control lever.



PARTS LIST

The following parts listed in Parts List No. 345404 are not used on 52602 Snow Thrower (Export).

Fig. No. 1	Ref. 55	Engine Assembly Tecumseh H-60 6H.P.
Fig. No. 3	Ref. 10	(2) Screw - Panel Mtg.
	Ref. 25	(1) Panel - Handle
	Ref. 26	(1) Decal - Name
	Ref. 9	(1) Handle - Quadrant & Decal Assem.

The following parts are used on No. 52602 Imperial Snow Thrower (Export only).
 Number listing of following DOES NOT apply to Ref. Nos. used in PARTS LIST No. 345404.

No.	Part No.	Quan.	Description
1	-	1	Engine Assem. - Tecumseh 6H.P. #60 Snow King Convertible
2	153415	1	Hood Support Assem.
3	310690	1	Spacer - Hood Support Brkt. Mtg.
4	342874	1	Grommet - Plug Wire Hole Hood Support
5	126408	1	Throttle Control Assem.
6	119112	1	Engine Hood Assem.
7	403614	2	Screw, 1/4-20 x 1/2 Pan Hd. - Hood Mtg.
8	446128	2	Lockwasher, 1/4 Med. - Hood Mtg.
9	409230	2	Screw, #10 x 1 Rd. Hd. - Throttle Control Mtg.
10	453002	2	Washer, #10 SAE - Throttle Control Mtg.
11	328112	1	Hood - Rear Engine
12	403614	3	Screw, 1/4-20 x 1/2 Pan Hd. - Hood to Panel Mtg.
13	446128	3	Lockwasher, 1/4-Med. - Hood to Panel Mtg.
14	443102	3	Nut, 1/4-20 Hex - Hood to Panel Mtg.
15	119196	1	Handle, Quadrant and Decal Assem.
16	328205	1	Decal - "Oil"
17	341696	1	Decal - "Gasoline"
18	-	1	Decal - Engine Operating Instructions (Furnished by Eng. Mfg.)
19	-	1	Decal - "Choke" (Furnished by Eng. Mfg.)
20	343555	1	Eye Bolt - Starter Cord
21	444708	1	Nut, 1/4-20 Hex Gripco C/Lock-Eye Bolt to Handle Mtg.