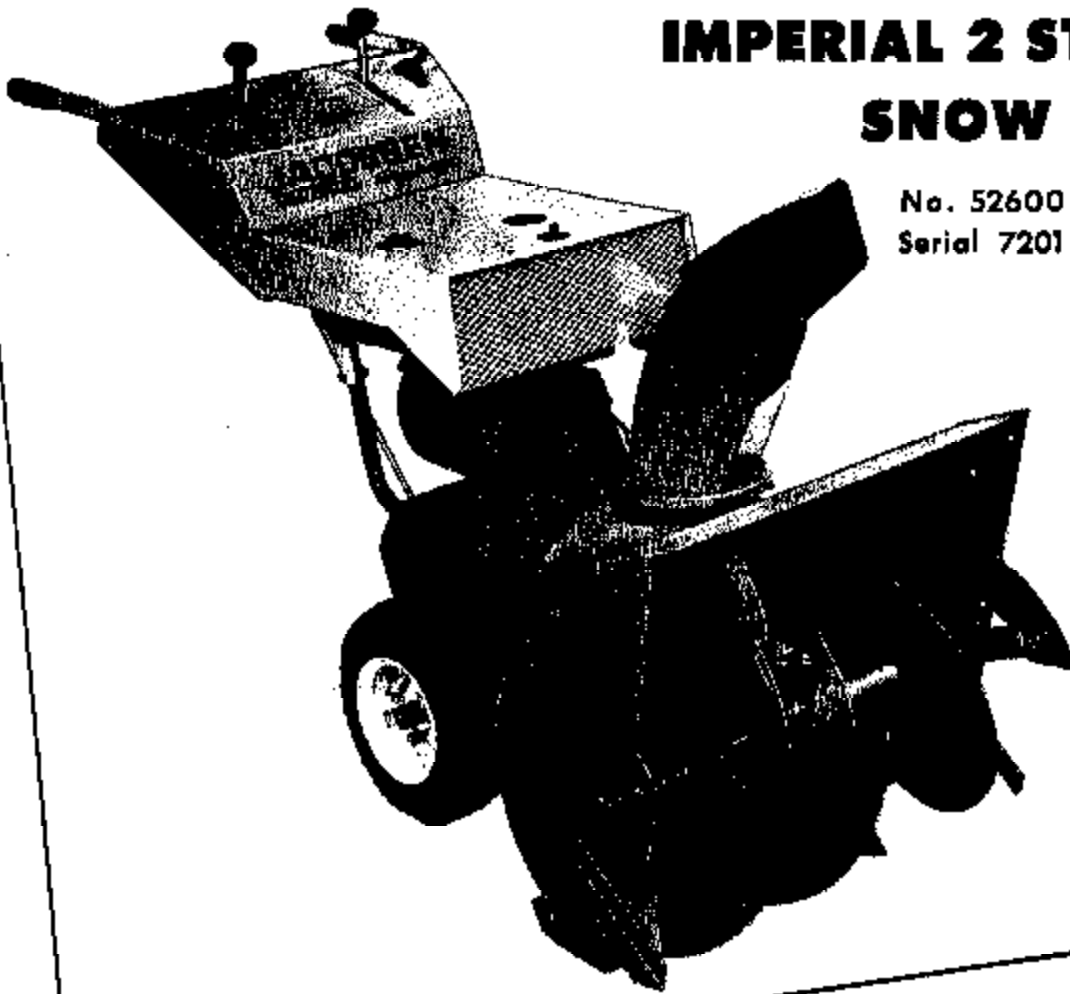


for **JACOBSEN**
IMPERIAL 2 STAGE
SNOW JET

No. 52600
Serial 7201 and Up



JACOBSEN MANUFACTURING COMPANY
RACINE, WISCONSIN 53403

Part No. 34244B.

ENGINE AND WHEELS

Ref. No.	Part No.	Quan.	Description	Ref. No.	Part No.	Quan.	Description
1	126160	1	Tractor Frame	55	443108	6	Nut, 5/16-18 Hex.
2	218002	1	Fork, Bearing Retainer	55	341706	2	Tire, 4.10/3.50 x 6 Pneumatic
3	341589	1	Shaft, Blade	57	341704	2	Tube - Inner
4	460028	3	Cotter Pin, 1/8 x 1	56	831346	2	Rim - Inner
5	126166	1	Disc Bracket incl. 2 Bushings, Ref. No. 8	59	331349	2	Rim - Outer
6	341585	2	Bushing	60	400280	12	Screw, 3/8-16 x 7/8 Hex. Hd.
7	831382	1	Shaft, Driving Disc	61	446140	12	Lockwasher, 3/8 Med.
8	236003	1	Hub, Drive Disc	62	443110	12	Nut, 3/8-16 Hex
9	153075	1	Wheel, Drive	63	153053	2	Wheel Hub
10	400180	5	Screw, 5/16-18 x 1/2 Hex Hd.	64	463017	2	Key, 3/16 x 3/4, Woodruff
11	446134	6	Lockwasher, 5/16 Med.	65	460030	2	Cotter Pin, 1/8 x 1-1/4
12	341607	1	Bearing, Drive Hub	66		1	Engine 6 HP Tecumseh H60-75108E
13	459017	1	Ring, Retaining Truarc 5100-98	67	341633	1	Guard, Belt - Rear
14	341626	2	Bearing, Disc Shaft	68	341636	2	Guide, Belt
15	415656	4	Screw, 5/16-24 x 3/8 Soc. Hd. Cup Pt. Set	69	446134	2	Lockwasher, 5/16 Med.
16	400184	6	Screw, 5/16-18 x 3/4 Hex Hd.	70	400222	2	Screw, 5/16-24 x 3/4 Hex Hd.
17	446134	6	Lockwasher, 5/16 Med.	71	453009	2	Washer, 5/16 SAE
18	443108	6	Nut, 5/16-18 Hex.	72	440124	4	Screw, 3/8-16 x 3/4 Carriage Short Neck
19	341620	1	Sprocket, Drive	73	446140	4	Lockwasher, 3/8 Med.
20	415659	1	Screw, 1/4-20 x 1/4 Soc. Hd. Cup Pt. Set	74	443110	4	Nut, 3/8-16 Hex
21	463003	1	Key, 1/8 x 1/2 Woodruff	75	327846	1	Cover, Starter Opening
22	310740	1	Spring, Disc Bracket	76	409010	1	Screw, #10 x 1/2 Type A Rd. Hd. Slotted
23	460024	2	Cotter Pin, 1/8 x 1/2	77	269004	1	Pulley, Engine
24	153062	1	Pinion and Sprocket Assembly incl. 2 Bushings, Ref. No. 25	78	412013	1	Screw, 5/16-18 x 1/2 Sq. Hd. Cup Pt. Set
25	341585	2	Bushing	79	306968	1	Key, 1/4 Sq. x 15/16
26	341594	1	Shaft, Yoke Pivot	80	331325	1	Belt, Drive
27	326993	1	Pin, Anti-Rotation	61	341641	1	Brace, Handle to Engine
28	458429	1	Ring, Retaining	62	453009	1	Washer, 5/16 SAE
29	471224	1	Grease Fitting, 1/8 NPT x 67-1/2"	63	400184	1	Screw, 5/16-18 x 1-3/4 Hex Hd.
30	341806	1	Chain, Traction incl. 1 Chain Link Ref. No. 91	64	446134	1	Lockwasher, 5/16 Med.
31	470503	1	Link, Chain	65	443106	1	Nut, 5/16-18 Hex.
32	153058	1	Speed Linkage	66	126027	1	Guard, Belt
33	341585	1	Support, Linkage	67	400104	1	Screw, 1/4-20 x 1/2 Hex Hd.
34	481467	1	Clevis Pin, 3/8 Dia. x 2-1/4	68	446128	1	Lockwasher, 1/4 Med.
35	460018	1	Cotter Pin, 3/32 x 2/4	69	126158	1	Cover, Tractor Bottom
36	153095	1	Rod and Coupling	70	400104	4	Screw, 1/4-20 x 1/2 Hex Hd.
37	460028	1	Pin, 1/8 x 3/4 Cotter	91	446128	4	Lockwasher, 1/4 Med.
38	440076	2	Carriage Bolt, 5/16-18 x 3/4	92	119112	1	Engine Hood Assembly
39	446134	2	Lockwasher, 5/16 Med.	93	403614	2	Screw, 1/4-20 x 1/2 Pan Hd. Slotted
40	443108	2	Nut, 5/16-18 Hex.	94	446128	2	Lockwasher, 1/4 Med.
41	153085	1	Tube and Arm	95	153415	1	Support, Hood
42	400324	1	Screw, 3/8-24 x 2-3/4 Hex. Hd.	97	310890	1	Spacer-Hood Support
43	443812	1	Nut, 3/8-24, Hex Jam	98		1	Plate, Berial No.
44	444744	1	Nut, 3/8-24 Hex Grip on Center Loc	99	409508	2	Screw, #2 x 1/4 Hd. Hd. Type "U" Drive
45	342450	1	Link, Clutch	100	311710	A.R.	Washer
46	460028	2	Cotter Pin, 1/8 x 3/4	101	341896	1	Decal, Gasoline
47	341587	1	Axle	102	328205	1	Decal, Oil
48	341592	1	Gear, Axle Drive	106	403614	3	Screw, 1/4-20 x 1/2 Pan Hd. Slotted
49	483017	1	Key, 3/16 x 3/4 Woodruff	106	446128	3	Lockwasher, 1/4 Med.
50	458419	1	Ring, Retaining	107	400258	2	Screw, 3/8-16 x 3/4 Hex Hd.
51	341625	2	Bearing, Axle	108	446140	2	Lockwasher, 3/8 Med.
52	415656	4	Screw, 5/16-24 x 3/8 Soc. Hd. Cup Pt. Set	109	443110	2	Nut, 1/2-13 Hex
53	440076	6	Screw, 5/16-18 x 3/4 Carriage Short Neck	110	446152	2	Lockwasher, 1/2 Med.
64	446134	6	Lockwasher, 5/16 Med.	111	341692	1	Decal, Traction Clutch

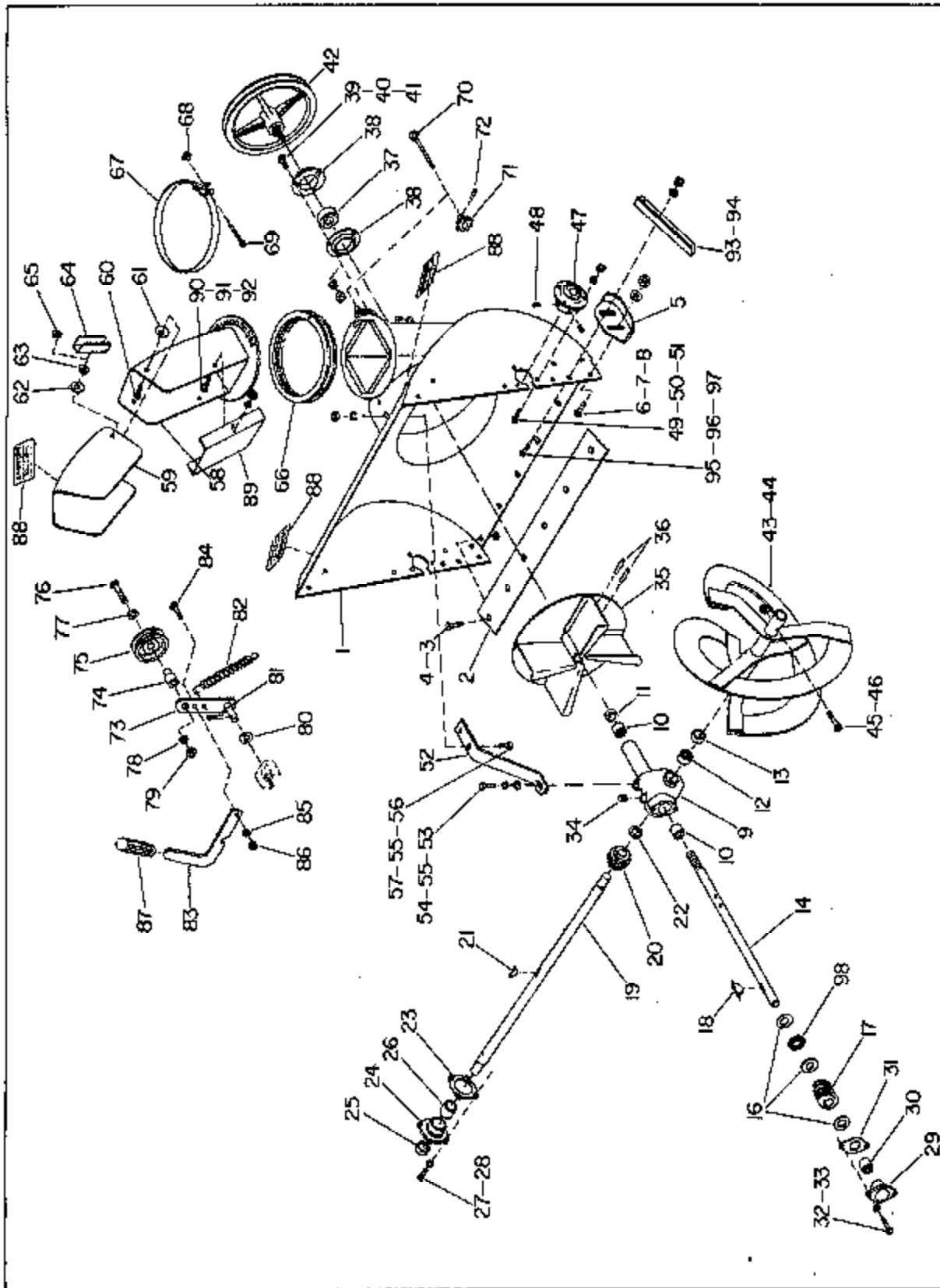


Figure 2. Auger

AUGER

Ref. No.	Part No.	Quan.	Description	Ref. No.	Part No.	Quan.	Description
1	114019	1	Auger Housing	49	440078	8	Bolt, 5/16-18 x 3/4 Carriage Short Neck
2	331333	1	Blade, Scraper	50	446134	8	Lockwasher, 5/16 Med.
3	402630	8	Screw, 5/16-18 x 1/2 Flat Hd.	51	443106	8	Nut, 5/16-18 Hex
4	444718	8	Nut, 5/16-18 Hex Gripco Center Loc	52	341804	1	Support, Gear Box
5	341598	2	Skid	53	400188	1	Screw, 5/16-18 x 7/8 Hex Hd.
6	440078	4	Bolt, 5/16-18 x 5/8	54	453008	1	Washer, 5/16 SAE Std.
7	453008	4	Washer, 5/16 SAE Plain	55	446134	3	Lockwasher, 5/16 Med.
8	444718	4	Nut, 5/16-18 Hex Gripco Center Loc	56	440078	2	Bolt, 5/16-18 x 3/4 Carriage Short Neck
9	128923	1	Gear Housing Assembly incl. 2 Bearings, Ref. No. 10; 1 Seal, Ref. No. 11; 1 Bearing, Ref. No. 12; 1 Seal, Ref. No. 13.	57	443108	2	Nut, 5/16-18 Hex
10	321293	2	Bearing, Fan Shaft	58	128158	1	Discharge Chute
11	321294	1	Seal, Fan Shaft	59	341813	1	Deflector, Discharge
12	341580	1	Bearing, Auger Shaft	60	440078	2	Bolt, 5/16-18 x 3/4 Carriage Short Neck
13	341581	1	Seal, Auger Shaft	61	341717	2	Washer, Nylon Thrust
14	331337	1	Shaft, Fan	62	454027	2	Washer, 5/16 Shakeproof
15	341588	3	Race, Thrust Bearing	63	453008	2	Washer, 5/16 SAE
16	341808	1	Worm	64	153057	1	Wing Nut Assembly (L.H. only)
17	463113	1	Key, 3/16 x 3/4 Morton	65	444718	1	Nut, 5/16-18 Hex Gripco Center Loc (R.H. only)
18	331331	1	Shaft, Auger	66	341586	1	Retainer, Discharge Chute
19	341608	1	Worm Wheel	67	153086	1	Discharge Chute Band Assem. incl. 1 Nut, Ref. No. 68; 1 Screw, Ref. No. 69.
20	463033	1	Key, 1/4 x 7/8 Woodruff	68	444502	1	Nut, 10-24 Sq.
21	341608	1	Washer, Thrust	69	403717	1	Screw, 10-24 x 2 Fil. Hd. Wash Face Mach.
22	341610	1	Gasket, Gear Housing Cover	70	341585	1	Rod, Front Chute
23	163054	1	Gear Housing Cover Assembly incl. 1 Seal, Ref. No. 25; 1 Bearing, Ref. No. 26	71	153201	1	Sprocket, Chute Adj.
24	341581	1	Seal	72	461388	1	Roll Pin, 1/8 x 3/4
25	341580	1	Bearing	73	153078	1	Idler Arm Assembly
26	400184	4	Screw, 5/16-18 x 3/4 Hex Hd.	74	341828	1	Spacer, Idler Arm
27	446134	4	Lockwasher, 5/16 Med.	75	315214	1	Pulley, Idler
28	153082	1	End Cover Assembly incl. 1 Bearing, Ref. No. 30.	76	400270	1	Screw, 3/8-18 x 2 Hex Hd.
29	321293	1	Bearing	77	453011	1	Washer, 3/8 SAE Std.
30	341821	1	Gasket, End Cover	78	446140	1	Lockwasher, 3/8 Med.
31	400184	2	Screw, 5/16-18 x 3/4 Hex Hd.	79	443110	1	Nut, 3/8-18 Hex
32	446134	2	Lockwasher, 5/16 Med.	80	453017	1	Washer, 1/2 SAE
33	472203	1	Plug, 1/4 NPT Sq. Hd. Pipe	81	460028	1	Cutter Pin, 1/8 x 1
34	128028	1	Fan	82	341575	1	Spring, Idler Arm
35	461408	2	Roll Pin, 1/4 x 1-1/2	83	341720	1	Handle, Idler
36	341861	1	Bearing, Fan Shaft	84	400108	1	Screw, 1/4-20 x 3/4 Hex Hd. Cap
37	341582	2	Flange, Fan Shaft Bearing	85	453008	1	Washer, 1/4 Shakeproof Spring
38	440078	8	Bolt, 5/16-18 x 3/4 Carriage Short Neck	86	444708	1	Nut, 1/4-20 Hex Gripco
39	446134	8	Lockwasher, 5/16 Med.	87	313855	1	Grip, Idler Handle
40	443106	8	Nut, 5/16-18 Hex	88	500116	3	Decal, Caution
41	239002	1	Pulley, Driven	89	342451	1	Guard - Chute
42	119019	1	Auger R.H. (Not illus.)	90	440092	2	Bolt, 5/16-18 x 1/2 Rd. Hd. Short Sq. Neck Carriage
43	119020	1	Auger L.H.	91	446134	2	Lockwasher, Spring Type
44	342449	2	Bolt - Auger Shear	92	443106	2	Nut, 5/16-18 Hex
45	444708	2	Nut, 1/4-20 Hex Gripco Center Loc	93	342461	1	Guard - L.H. Auger
46	341825	2	Bearing, Auger Shaft	94	342460	1	Guard - R.H. Auger
47	415558	4	Screw, 5/16-24 x 3/8 Soc. Hd. Cup Pt. Set	95	440078	4	Bolt - 5/16-18 x 3/4 Sh. Nk. Carriage
				96	446134	4	Lockwasher 5/16 Med.
				97	443106	4	Nut, 5/16-18 Hex
				98	341584	1	Bearing - Worm Thrust

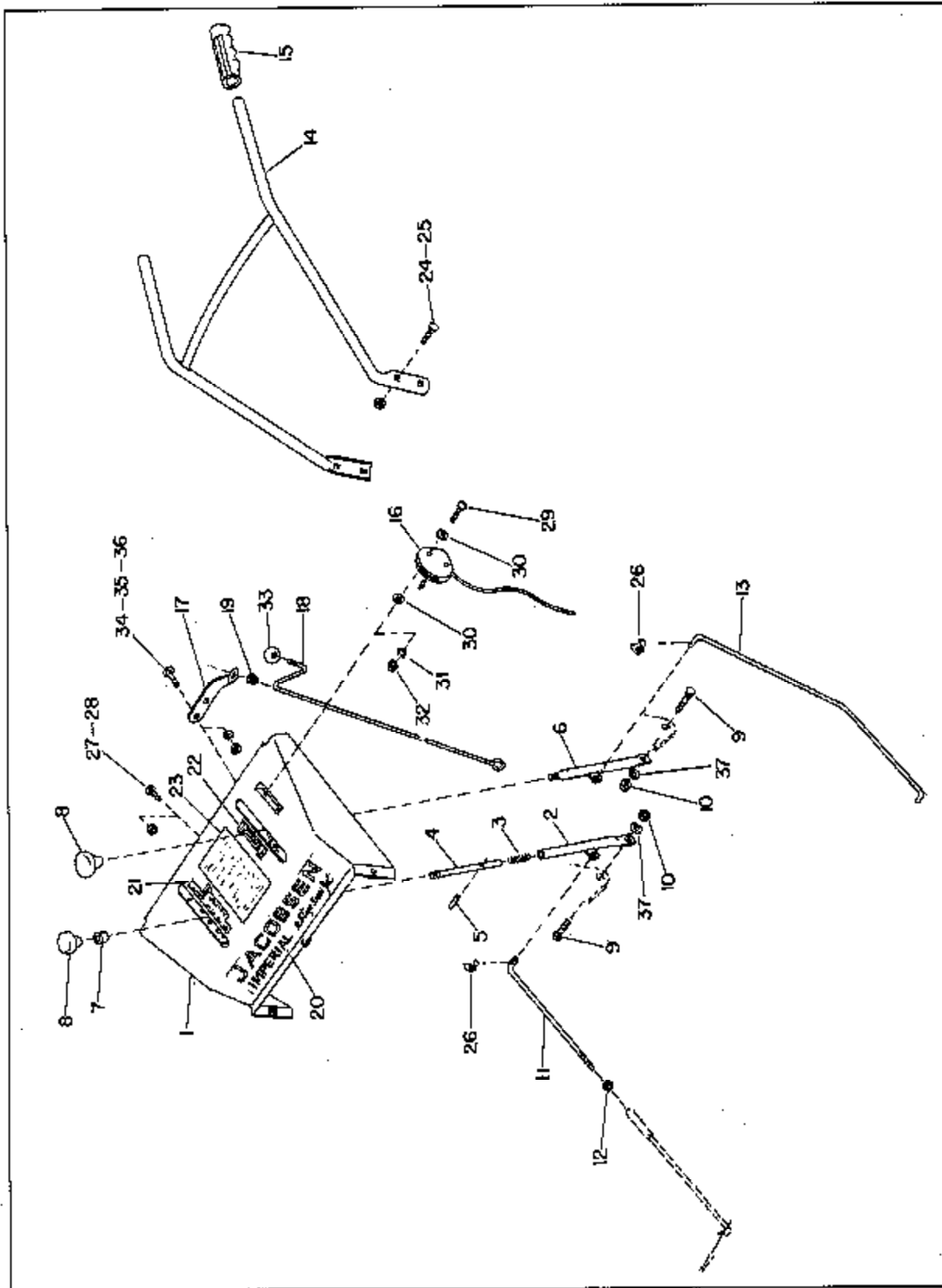


Figure 3. Handle

HANDLE

Ref. No.	Part No.	Quan.	Description	Ref. No.	Part No.	Quan.	Description
1	128030	1	Panel, Control	22	509117	2	Decal, Traction Clutch
2	159062	1	Handle, Speed Control	23	509083	1	Decal, Operation
3	315344	1	Spring, Control Handle	24	449088	4	Bolt, 5/16-18 x 1-3/4 Carriage Short Neck
4	341572	1	Plunger, Speed Control	25	444718	4	Nut, 5/16-18 Hex Gripco Center Loc
5	461387	1	Pin, 1/4 x 1 Roll	26	341656	2	Spring, Control Rod Mounting
6	153061	1	Handle, Clutch Control	27	440086	1	Bolt, 5/16-18 x 1-1/2 Carriage (Short Neck) Control Panel to Upper Handle Mounting
7	341701	1	Cap, Speed Selector	28	444718	1	Nut, 5/16-18 Hex Gripco Center Loc
8	341658	2	Knob, Control	29	408578	2	Screw, 10-24 x 1 Hex Hd. Mach.
9	449082	2	Bolt, 5/16-18 x 1 Carriage Short Neck	30	458002	4	Washer, #10 SAE
10	444718	2	Nut, 5/16-18 Hex Gripco End Loc	31	446116	2	Lockwasher #10 Med.
11	341845	1	Rod, Speed Control	32	444310	2	Nut, 10-24 Hex
12	443110	1	Nut, 3/8-18 Hex.	33	326731	1	Knob, Chute Adjusting
13	341846	1	Rod, Clutch Control	34	440078	2	Bolt, 5/16-18 x 3/4 Rd. Hd. Short Sq. Neck Carriage
14	126081	1	Handle, Upper	35	446134	2	Lockwasher, 5/16 Med.
15	317807	2	Grip, Handle	36	443106	2	Nut, 5/16-18 Hex.
16	126034	1	Throttle Control Assembly	37	454024	2	Washer, 5/16 Spring
17	341719	1	Support, Chute Adjusting Rod				
18	341654	1	Rod, Chute Adjusting				
19	342384	1	Bushing, Adjusting Rod				
20	500318	1	Decal, Jacobsen				
21	500115	1	Decal, Speed Selector				

IMPORTANT

DO NOT MISLAY OR LOSE YOUR PARTS LIST AS THIS IS THE ONLY MEANS YOU HAVE OF ORDERING REPLACEMENT PARTS ACCURATELY.

INSTRUCTIONS FOR ORDERING PARTS

To eliminate error and speed delivery:

1. Write your NAME and ADDRESS on your order PLAINLY.
2. Explain WHERE and HOW to make shipment.
3. Give PRODUCT NUMBER, NAME, and SERIAL NUMBER that is stamped on the NAME PLATE of your product.
4. Order from your PARTS LIST as this is the ONLY means we have of identifying the parts you need. Order by QUANTITY DESIRED, the PART NUMBER, and the DESCRIPTION OF PART.
5. Send your order to your nearest JACOBSEN DEALER, AUTHORIZED SERVICE STATION, or AUTHORIZED JACOBSEN SERVICE DISTRIBUTOR as indicated in your SERVICE STATION DISTRIBUTOR'S DIRECTORY.
6. INSPECT ALL SHIPMENTS ON RECEIPT. If any parts are damaged or missing, file a claim with the carrier before accepting.
7. Do not return material to your nearest JACOBSEN DEALER, AUTHORIZED SERVICE STATION or AUTHORIZED JACOBSEN SERVICE DISTRIBUTOR without a letter of explanation. Make a list of all returned parts, show your name and address and include it with the shipment. TRANSPORTATION CHARGES MUST BE PREPAID.

WARRANTY

Jacobsen Consumer Products are guaranteed to the original retail purchaser against defective material and workmanship for ONE YEAR from date of purchase OR FOR 45 DAYS IF USED FOR COMMERCIAL OR RENTAL PURPOSES. The Jacobsen Manufacturing Company will replace defective parts free of charge f.o.b. any Jacobsen Service Station, except items warranted by the original manufacturer such as engines or other products that carry a separate warranty.

This warranty will not apply to Jacobsen products repaired or altered outside of a Jacobsen Service Station.

CUSTOMER PLEASE NOTE

Service related to normal maintenance items listed below under "Responsibility of the User" are not included under this warranty. Service required on these items will be furnished at reasonable prices.

RESPONSIBILITY OF THE USER

1. Adjustments to carburetor, ignition points or spark plug.
2. Adjustments made necessary through normal operation.
3. Sharpening of blades.
4. Failures resulting from accidental damage, misuse, improper care, negligence, or not lubricating properly.

The placing upon a Jacobsen product of any part or attachment not sold or approved by the Company shall void the warranty.

The company reserves the right to incorporate any changes in design without obligation to make these changes on units previously sold.

JACOBSEN MANUFACTURING COMPANY

A Careful Operator

**IS THE BEST INSURANCE
AGAINST AN ACCIDENT.**

— NATIONAL SAFETY COUNCIL



JACOBSEN MANUFACTURING COMPANY
RACINE, WISCONSIN 53403

LITHO IN U.S.A.