

Homelite®

- gb** PARTS LIST
- F** LISTE DE PIÈCES
- E** LISTA DE PIEZAS

- gb** MODEL
- F** MODELE
- E** MODELO

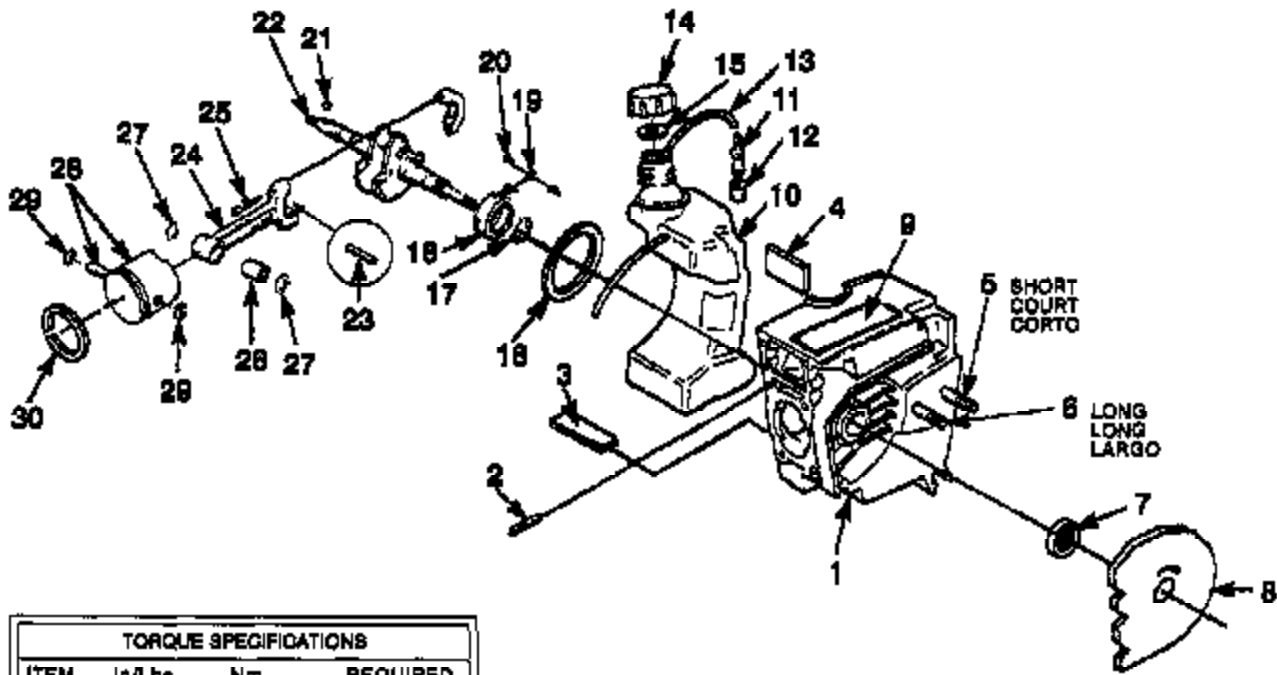
XL98-E
UT05060

- gb** MULTI-PURPOSE SAW
- F** SCIE À USAGES MULTIPLES
- E** SIERRA DE MÚLTIPLES APLICACIONES

Printed in U.S.A. **gb**
Imprimé aux U.S.A. **F**
Impreso en Estados Unidos **E**

P/N 19845

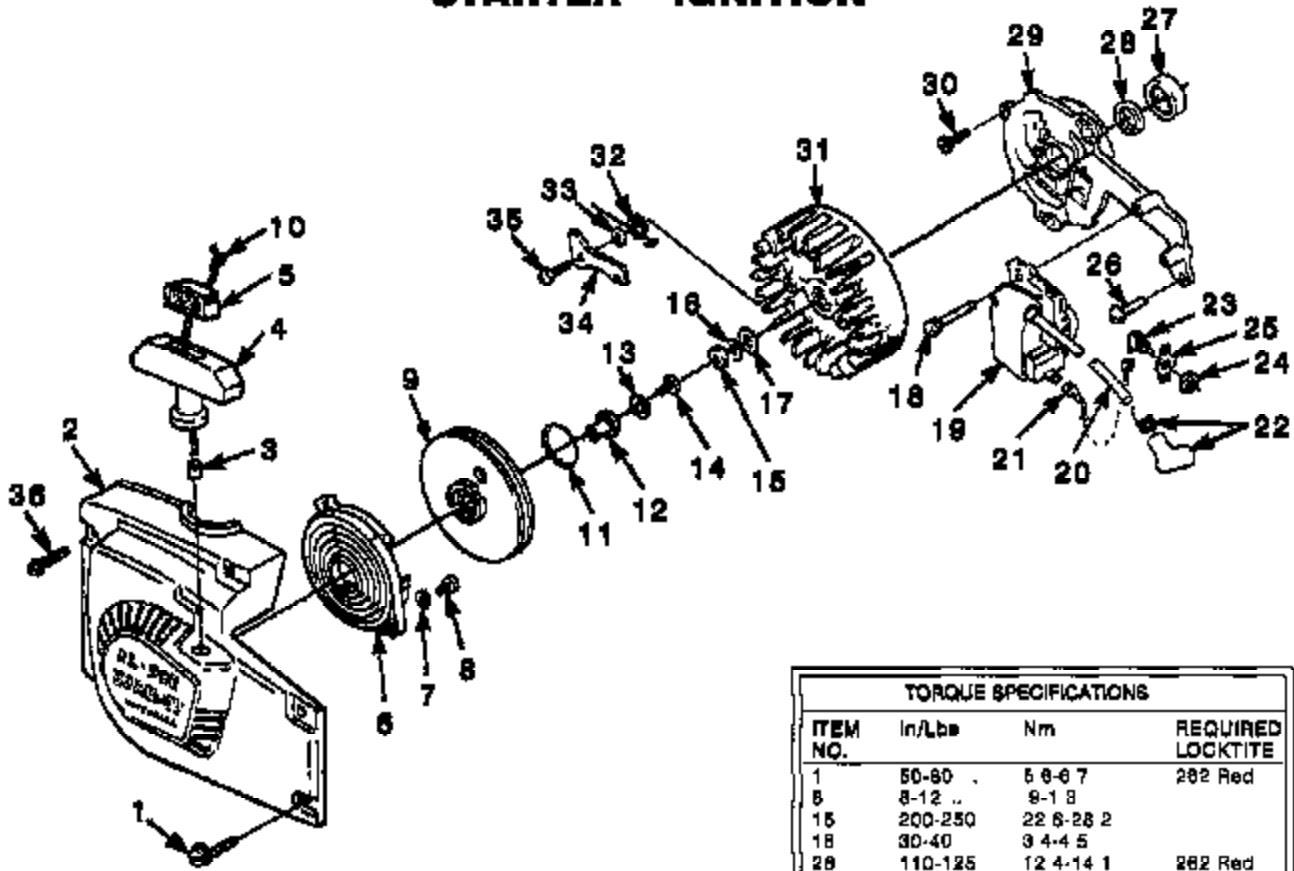
ENGINE INTERNAL - FUEL TANK



TORQUE SPECIFICATIONS			
ITEM NO.	In/Lbs	Nm	REQUIRED LOCKTITE
26	55-70	7.3-7.9	

N	PN	D	Q
1	*A 08335	CRANKCASE	1
2	88438	STUD- Cylinder	4
3	03027	SPACER- Fuel Tank	1
4	03028 A	SPACER- Fuel Tank	1
5	02327	BOLT- (5/16-18 X 2 1/4")	1
6	82585	BOLT- (5/16-18 X 2 1/2")	1
7	12306	SEAL	1
8	84156 A	SAW DUST SHIELD	1
9	46788 A	DECAL- Instruction/Warning	1
10	*A 03488 A	FUEL TANK	1
11	*A 87700	FILTER- Fuel	1
12	59253 1A	ELEMENT- Filter	1
13	83112 5B	TUBING- Rubber (13")	1
14	*A 00082 B	CAP- Fuel	1
15	85808 A	GASKET- Fuel	1
16	87889	"O" RING	1
17	58319 A	RING- Retaining	1
18	58190	BEARING- Ball	1
19	59706	WASHER- Lock	2
20	70908	SCREW- Torx (10-32)	2
21	75076	KEY- Woodruff	1
22	67168 4	CRANKSHAFT	1
23	A 69058	BEARING- Needle	1
24	*A 69858 A	ROD- Connecting	1
25	88918	SCREW- Hex Hd. (8/32 X 1/2")	2
26	88838 A	BEARING	1
27	88010	WASHER	2
28	*A 48314	PISTON & PIN ASSY.	1
29	64742	RING- Retaining	2
30	65637	PISTON RING	1

STARTER - IGNITION



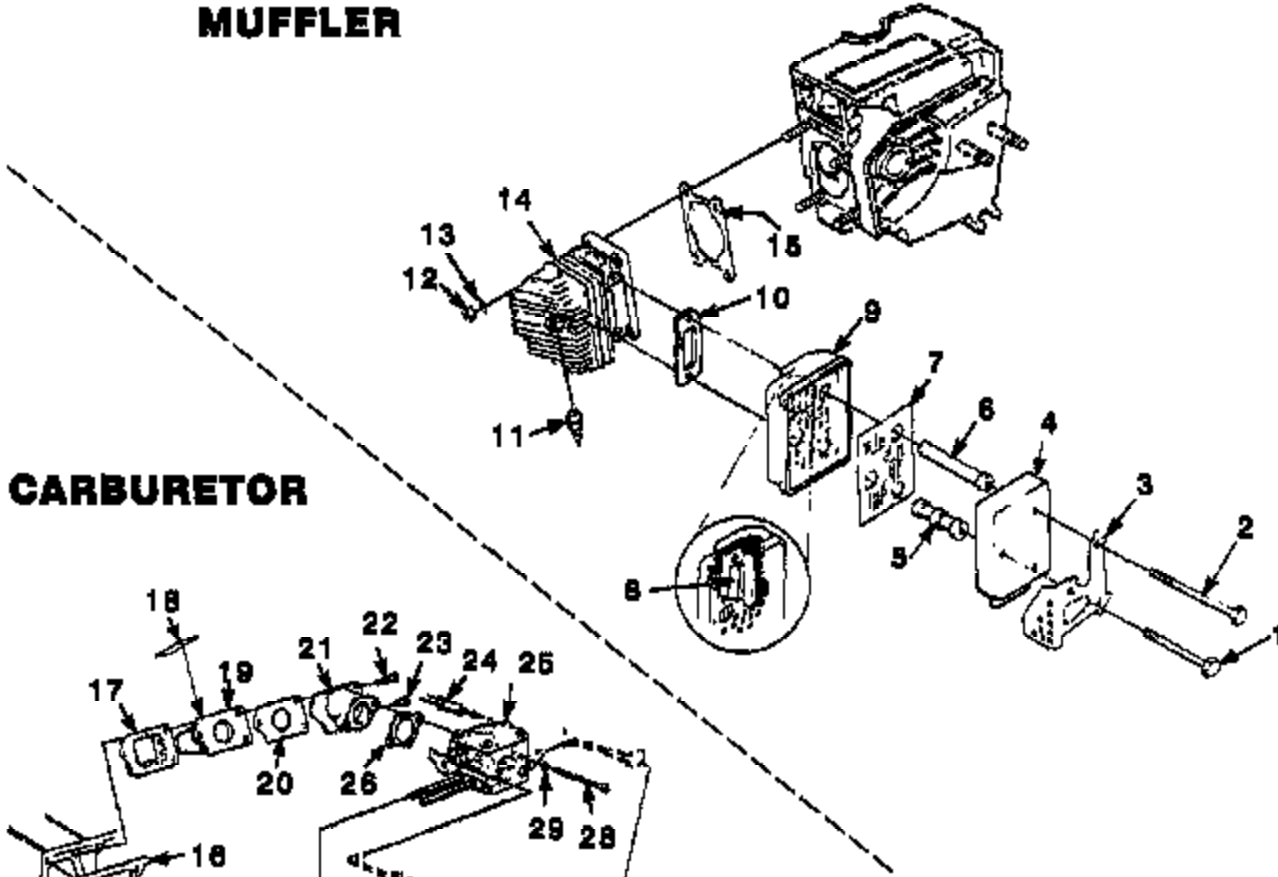
TORQUE SPECIFICATIONS			
ITEM NO.	In/Lbs	Nm	REQUIRED LOCKTITE
1	50-80	5.6-6.7	262 Red
5	8-12	9-1.8	
15	200-250	22.6-28.2	
18	30-40	3.4-4.5	
28	110-125	12.4-14.1	262 Red
30	110-125	12.4-14.1	262 Red
35	70-80	7.9-10.1	
36	50-80	5.6-6.7	262 Red

N	PN	D	Q
1	82555 1	SCREW- Th Hd. (10-24 X 3/4") Torx (T25)	3
2	• A 03619 A	HOUSING- Starter w/bushing	1
3	67177	BUSHING	1
4	• A 80082 B	GRIP- Starter	1
5	70018 A	INSERT	1
6	A 98087	SPRING & RETAINER	1
7	84025	WASHER- Flat	2
8	82528	SCREW- Thd. Form. (8-32 X 3/8")	2
9	• A 97990 C	PULLY & CUP	1
10	A 00518	STARTER ROPE	1
11	02525	SPRING-Grp	1
12	97992 A	BUSHING- Starter Rope	1
13	68763	WASHER- Flat	1
14	82409	SCREW- (10 7/8")	1
15	81124 A	NUT- Hex (3/8-24)	1
16	83102	WASHER- Lock (3/8")	1
17	84010	WASHER- Flat (8/8")	1
18	88044	SCREW- Sems Hex hd (8-32 X 1")	2

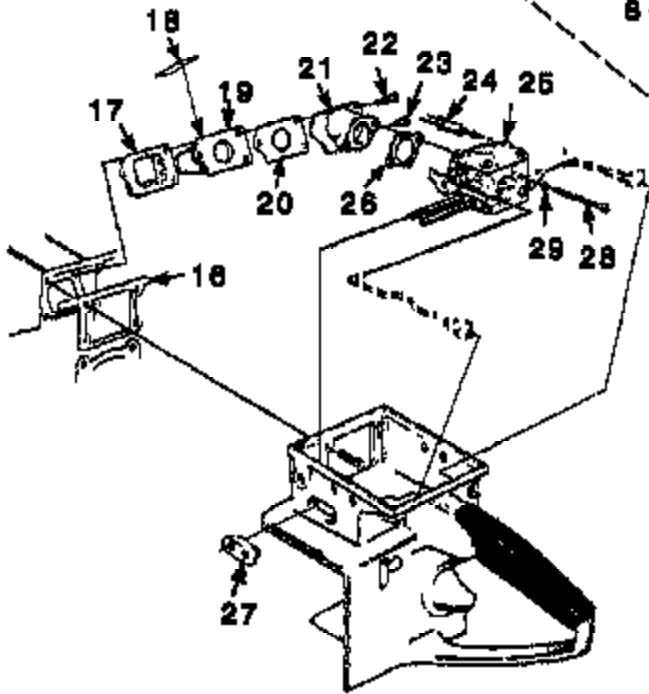
N	PN	D	Q
19	• A 88798 A	MODULE- Ignition	1
20	96743	LEAD- High Tension	1
21	A 84850	LEAD- Ground	1
22	A 83055	TERMINAL- Spark Plug	1
23	• A 57850 3B	SWITCH- Grounding	1
24	72084 A1	NUT	1
25	12763 A	PLATE- Indicating	1
26	80052	SCREW- Sems Hex Hd (1/4-20 X 3/4")	1
27	63185	BEARING- Roller	1
28	12283 A	SEAL	1
29	A 88789 A	PLATE- Back	1
30	80049	SCREW- (1/4-20 X 5/8")	1
31	88801 A	ROTOR	1
32	01101	SPRING- Starter Pawl	1
33	84116	WASHER- Flat	1
34	58756 A	STARTER PAWL	1
35	64054 C	SCREW- Shoulder	1
36	88178	SCREW- Th Hd (10-24 X 1.625) Torx (T25)	2

No. N Part No. PN DESCRIPTION D Quantity Q Assemblies Assemblies Ensembles Conjuntos

MUFFLER



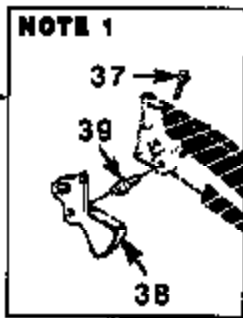
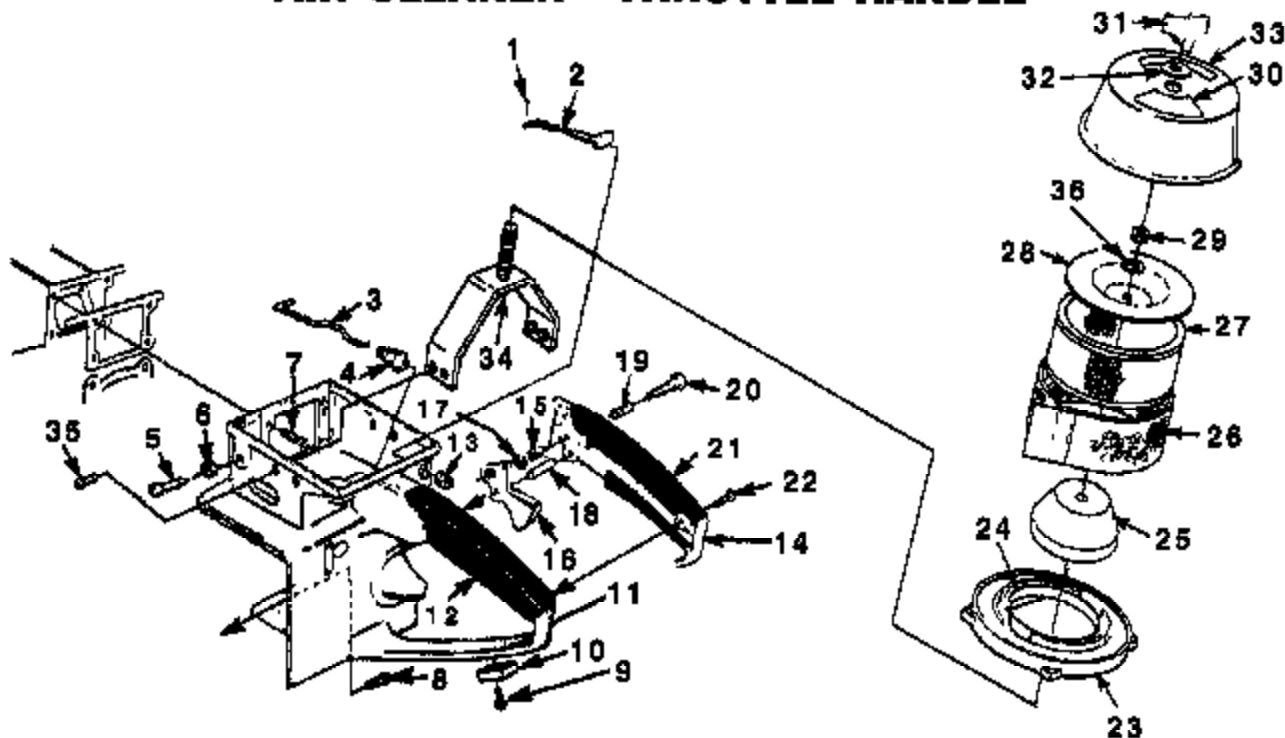
CARBURETOR



TORQUE SPECIFICATIONS			
ITEM NO.	In/Lbs	Nm	REQUIRED LOCKTITE
1	100-110	11.3-12.4	
2	100-110	11.3-12.4	
12	100-110	11.3-12.4	
22	20-25	2.3-2.8	... 242 Blue
23	20-25	2.3-2.8	... 242 Blue
25	20-25	2.3-2.8	

N	PN	D	Q
	• A 69854 G	COMPLETE MUFFLER	
1	85865	SCREW- Hex Hd	1
2	82280	SCREW- Hex Hd (1/4-20 X 3")	2
3	69842	SHIELD- Muffler	1
4	A 69836 1	CAP- Muffler	1
5	69844	SUPPORT- Short	1
6	69843	SUPPORT- Long	1
7	A 83800 A	SCREEN- Spark Arrestor	1
8	69839	PLATE- Muffler	1
9	A 69838 1	BODY- Muffler	1
10	78098	GASKET- Muffler	1
11	93561 S	SPARK PLUG	1
12	98212	NUT- (1/4-28 X 3/8")	4
13	69008	WASHER- Lock (1/4")	4
14	• A 42208 B	CYLINDER	1
15	69778 1	GASKET- Cylinder	1
16	69778 C	GASKET	1
17	69370 A	RETAINER- Reed	1
18	69168 A	REED- Valve	4
19	69371 B	SEAT- Reed Valve	1
20	65463	GASKET	1
21	A 67460 1	SPACER- Carburetor	1
22	62570	SCREW- (8-32 X 1 1/4")	2
23	62540	SCREW- Thread form (8-32 X 1 1/4")	1
24	93112 52	FUEL LINE	1
25	• A 07156	CARBURETOR	1
26	87540	GASKET	1
27	69751	GROMMET	1
28	82179	SCREW- (10-32 X 1 7/8")	2
29	83048	WASHER- Lock	2

AIR CLEANER - THROTTLE HANDLE

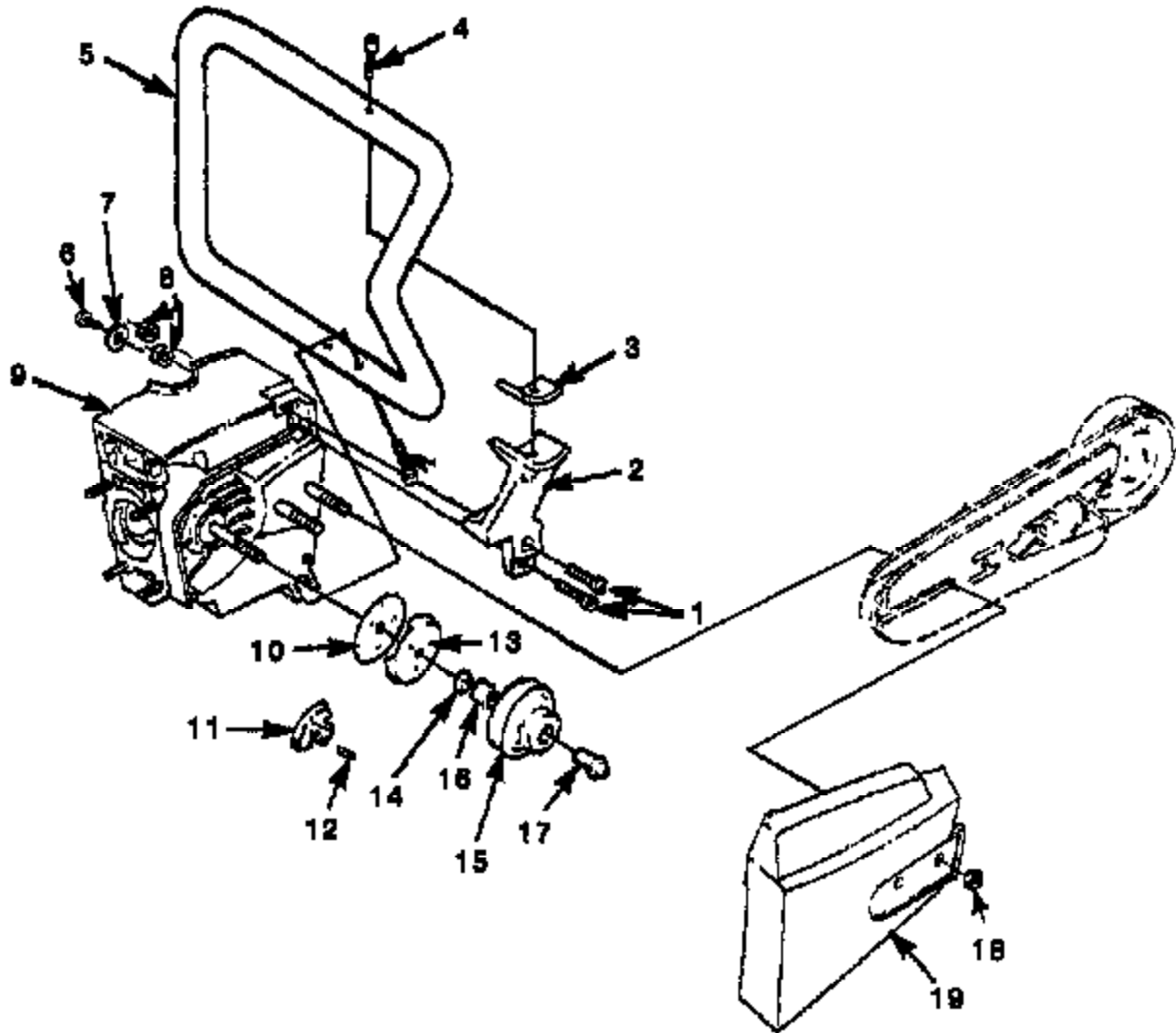


TORQUE SPECIFICATIONS			
ITEM NO.	In/Lbs	Nm	REQUIRED LOCKTITE
6	80-100	9 0-11 3	
7	80-90	9 0-10 2	262 Red
8	80-90	9 0-10 2	262 Red
9	20-30	2 2-3 4	
22	30-40	3 4-4 6	
29	70-90	7 8-10 1	

N	PN	D	Q	
1	86924	COTTER PIN	1	
2	67201 I	CHOKE ROD	1	
3	63268 A	ROD- Throttle	1	
4	58948	BOOT- Throttle Rod	1	
5	63368 A	SCREW- Idle Adjustment	1	
6	61117	NUT- Jam (5/16-24)	1	
7	60678	SCREW- Hex hd (12-24 X 5/8")	4	
8	60891	SCREW- Hex hd (12-24 X 7/8")	1	
9	63049	SCREW- (10-24 X 1/2")	1	
10	49669 1	PAD- Wear	1	
11	A 01845	HANDLE- Throttle	1	
12	66797	GRIP- Throttle Handle	1	
13	64862	GROMMET	1	
14	A 66046 A	COVER- Throttle Handle	1	
15	53064	BUSHING	1	
16	56858 A	TRIGGER (*NOTE 1)	1	
17	58409	RING- Retaining	1	
18	66548	PIN- Trigger (*NOTE 1)	1	
19	58406	SPRING- Throttle lock	1	
20	95671	PIN- Throttle	1	
21	58788	GRIP- Throttle Handle	1	
22	80560	SCREW- Pan hd (8-32 X 1/2")	2	
23	A 49666 C	AIR FILTER KIT	1	
24	A 60952 B	RING & GASKET ASSY	1	
25	50951	GASKET	1	
26	49786	FILTER- Air	1	
27	49213	PRE FILTER- Fell	1	
28	54620 B	ELEMENT- Air Filter	1	
29	49212	COVER- Filter Element	1	
30	81182	NUT- Hex (5/16-18)	1	
31	A 49697	DECAL- Warning	1	
32	06365	KNOB-Handle	1	
33	02782 A	GASKET	1	
34	49263	DECAL- Instruction	1	
35	A 02786	BRACKET- Cover	1	
36	88042	SCREW	4	
37	46072	GASKET	1	
A	37	80028 2	SCREW- (8-32 X 5/8")	1
	38	65748	TRIGGER	1
	39	65718	PIN	1

* NOTE 1: UNITS BEFORE 9/N H50840001, SEE INSET A

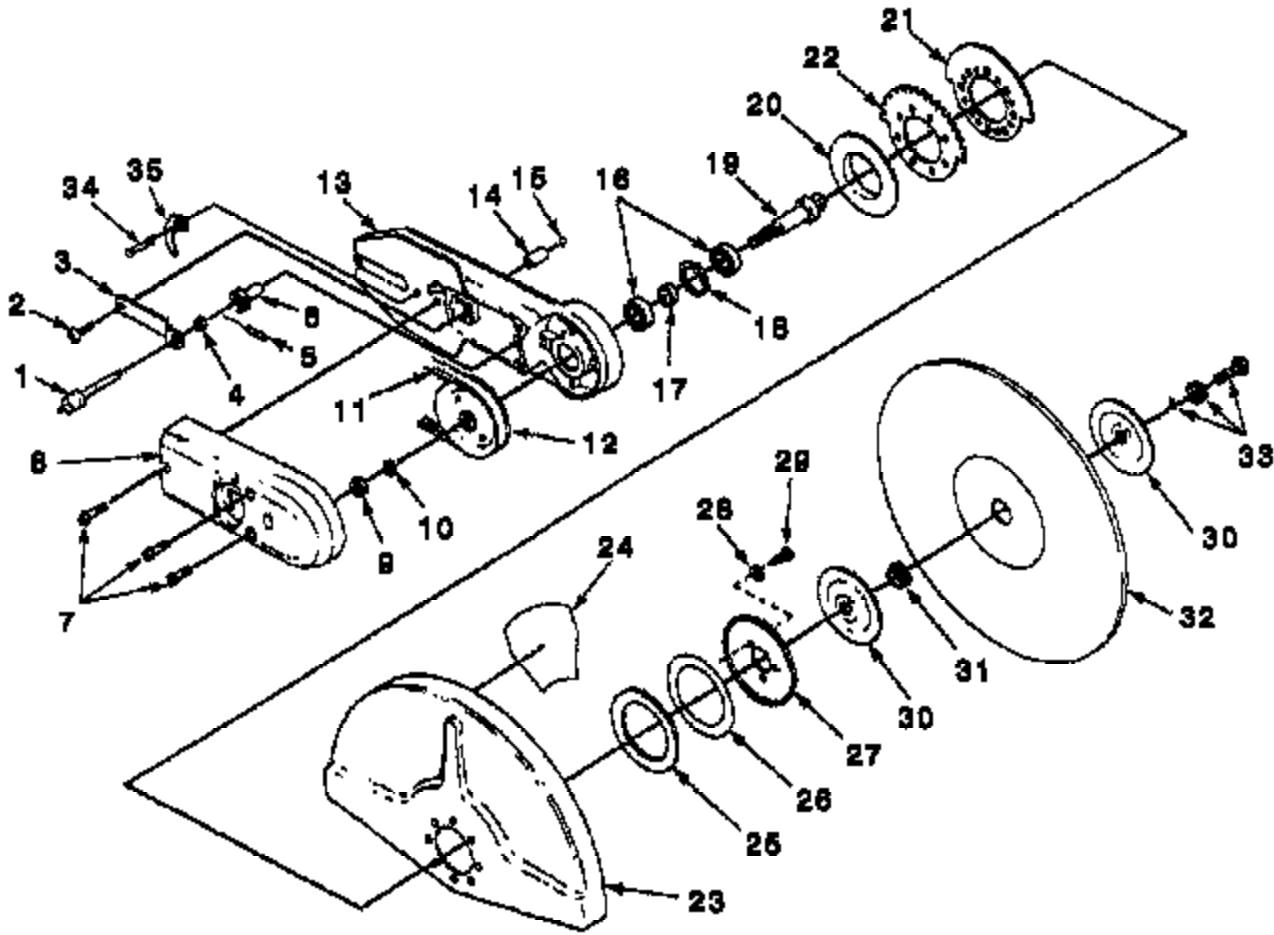
HANDLE - CLUTCH



TORQUE SPECIFICATIONS			
ITEM NO.	In/Lbs	Nm	REQUIRED LOCKTITE
1	80-90	9.0-10.1	262 Red
1B	Hand Tight		

N	PN	D	Q
1	80891	SCREW- Hex hd (12-24 X 7/8")	2
2	89829 2	BRACKET- Handle bar	1
3	51163	MOUNT- Shock (bracket)	1
4	80428 1	SCREW- Nylock (1/4-20 X 1")	3
5	A 49880 1	HANDLE BAR	1
6	80838	SCREW- Pan hd	1
7	95835	WASHER	1
8	81225	NUT- Hex (12-24)	2
9	A 08835	CRANKCASE	1
10	93828	COVER- Clutch	1
11	A 89480 C	CLUTCH ASSEMBLY	1
12	87053	SPRING- Clutch	8
13	85780 1B	PLATE- Clutch	1
14	89939	WASHER- Thrust (inner)	1
15	A 49224	PULLEY- Bearing & Arm	1
16	51151	BEARING- Needle	1
17	A 87901 A	INNER RACE KIT	1
18	81252	NUT- Hex Flange (5/16-18)	1
19	53579 7	COVER- Drivecase	1

WHEEL ARM ASSEMBLY



N	PN	D	Q
1	A 00660	KNOB & PIN	1
2	96620 1	SCREW-Trust Hd. (10-24 X 1/2")	1
3	01923	PLATE-Spring	1
4	01922	SPACER-Adjusting Pin	1
5	JA 46136 6	PIN-Roll	1
6	01921	SLEEVE-Cam	1
7	86762	SCREW-Round Hd (10-24 X 23/32")	3
8	07704	BELT-Cover	1
9	02428	NUT-Hex	1
10	JA 44614 6	WASHER-Lock (7/16)	1
11	46088	BELT- V-Drive	1
12	A 02891	PULLEY & HUB	1
13	07556 3A	ARM-Wheel	1
14	02267	SNUBBER	1
15	00568	STEEL BALL	1
16	83107	BEARING-Ball	2
17	01915	SPACER-Bearing	1
18	31745	RING-Retaining	1
19	01908 1	SHAFT-Wheel	1
20	01916	COLLAR-Wheel Guard	1
21	01914 A	PAD-Adjuster	1
22	01913	DETENT-Adjuster	1
23	A 04847 A	WHEEL GUARD & DECAL / 12"	1
24	04845 A	DECAL-Caution	1
25	A 07698 A	WHEEL GUARD & DECAL / 14"	1
24	04845 A	DECAL-Caution	1

TORQUE SPECIFICATIONS			
ITEM NO.	In/Lbs	Nm	REQUIRED LOCKTITE
2	50-60	5.8-6.8	RED 282
7	30-40	3.4-4.5	
8	480-600	54-68	RED 262
29	50-60	5.6-6.8	RED 282
33	200-240	23-27	
34	180-170	15-19	

N	PN	D	Q
25	01912	WASHER-Rubber	1
26a	01911 01	SHIM- 020"	1
26b	01911 02	SHIM- 030" (Alt Part)	0
27	01910	WASHER-Spring	1
28	96635	WASHER (#12 - 11/16)	3
29	96620 1	SCREW-Trust Hd (10-24 X 1/2")	3
30	01909 1A	FLANGE-Wheel	1
31	01902	SPACER (1")	1
	01908	SPACER (22mm)	1
	01907	SPACER (20mm)	1
32	*	WHEEL	1
33	A 03412	BOLT & WASHER	1
34	90087	SCREW- Hex hd (5/16-18 X 1 1/2")	1
35	A 49184	CAM & ADJUSTER	1

* See Page 8.
 * Voir page 8.
 * Consulte la Página 8.

ACCESSORIES
ACCESSOIRES
ACCESORIOS

<p>WHEELS - Resinoid Roues - Resinoïde Ruedas tipo resina</p> <p>METAL - (12" x 1") 84687 B5 Métal - (30,48cm x 2,54cm) Metal - (30,48cm x 2,54cm)</p> <p>DUCTILE - (12" x 1") 88421 A8 Ductile - (30,48cm x 2,54cm) Dúctil - (30,48cm x 2,54cm)</p> <p>CONCRETE - (12" x 1") 84698 B5 Béton - (30,48cm x 2,54cm) Concreto - (30,48cm x 2,54cm)</p> <p>CONCRETE - (12" x 20mm) 49828 Béton - (30,48cm x 0,2cm) Concreto - (30,48cm x 0,2cm)</p> <p>DUCTILE - (12" x 20mm) 49825 Ductile - (30,48cm x 0,2cm) Dúctil - (30,48cm x 0,2cm)</p> <p>METAL - (12" x 20mm) 49824 Métal - (30,48cm x 0,2cm) Metal - (30,48cm x 0,2cm)</p> <p>DUCTILE - (14" x 1") 49880 Ductile - (35,56cm x 2,54cm) Dúctil - (35,56cm x 2,54cm)</p> <p>METAL - (14" x 1") 49561 Métal - (35,56cm x 2,54cm) Metal - (35,56cm x 2,54cm)</p>	<p>WHEELS - Diamond Roues - Diamant Nuevas de diamante</p> <p>CONCRETE - (12" x 1 / 8" x 1") A 49751 A Béton - (30,48cm x 0,31cm x 2,54cm) Concreto - (30,48cm x 0,31cm x 2,54cm)</p> <p>CONCRETE - (14" x 1 / 8" x 1") A 49572 A Béton - (35,56cm x 0,31cm x 2,54cm) Concreto - (35,56cm x 0,31cm x 2,54cm)</p> <p>SILASTIC : 24523 Silastic Silástico</p> <p>DOLLY KIT : UT05052 B Jeu pour chariot Juego de carretilla</p> <p>CARRY BAR w / Insert : A 16009 A Baïllar porteur avec insertion Moleta con inserto</p> <p>WET CUTTING KIT : A 49848 Jeu pour découpe humide Juego de corte líquido</p>
--	--

TOOLS
OUTILS
HERRAMIENTAS

<p>SHIM - Air Gap : 24908 Cale - Couche d'air intermédiaires Calce - Intervalo de aire</p> <p>BIT - Torx 1/4" Shank : 24982 D1 Mèche Torx avec tige de (6mm) Broca torx con vástago de (6mm)</p> <p>BIT - Torx 5/16" Shank : 24982 D2 Mèche Torx avec tige de (8mm) Broca torx con vástago de (8mm)</p> <p>PULLER - Rotor : A24544A Extracteur de rotor Extractor de rotor</p> <p>WHEEL ARM Complete : BRAS DE SUPPORT DE LA ROUE BRAZO DE LA RUEDA 12" X 1" (305mm x 25.4mm) A08397 14" X 1" (355mm x 25.4mm) A08398</p>	<p>SCREW DRIVER : 24541 Tournevis Destornillador</p> <p>WRENCH - Combination (1/2", 3/4", Screwdriver) 19188 Olé combiné Llave combinada</p> <p>WRENCH - Clutch Spanner : A 23934 Clé à griffe d'embrayage Llave de apretar tuercas para el embrague</p> <p>WRENCH - 1/2" Forged : D3000 Olé ensouler forgé de 1/2 pouce Llave - Forjado (1,27 cm)</p>
--	--