

No  
Diagram  
Available

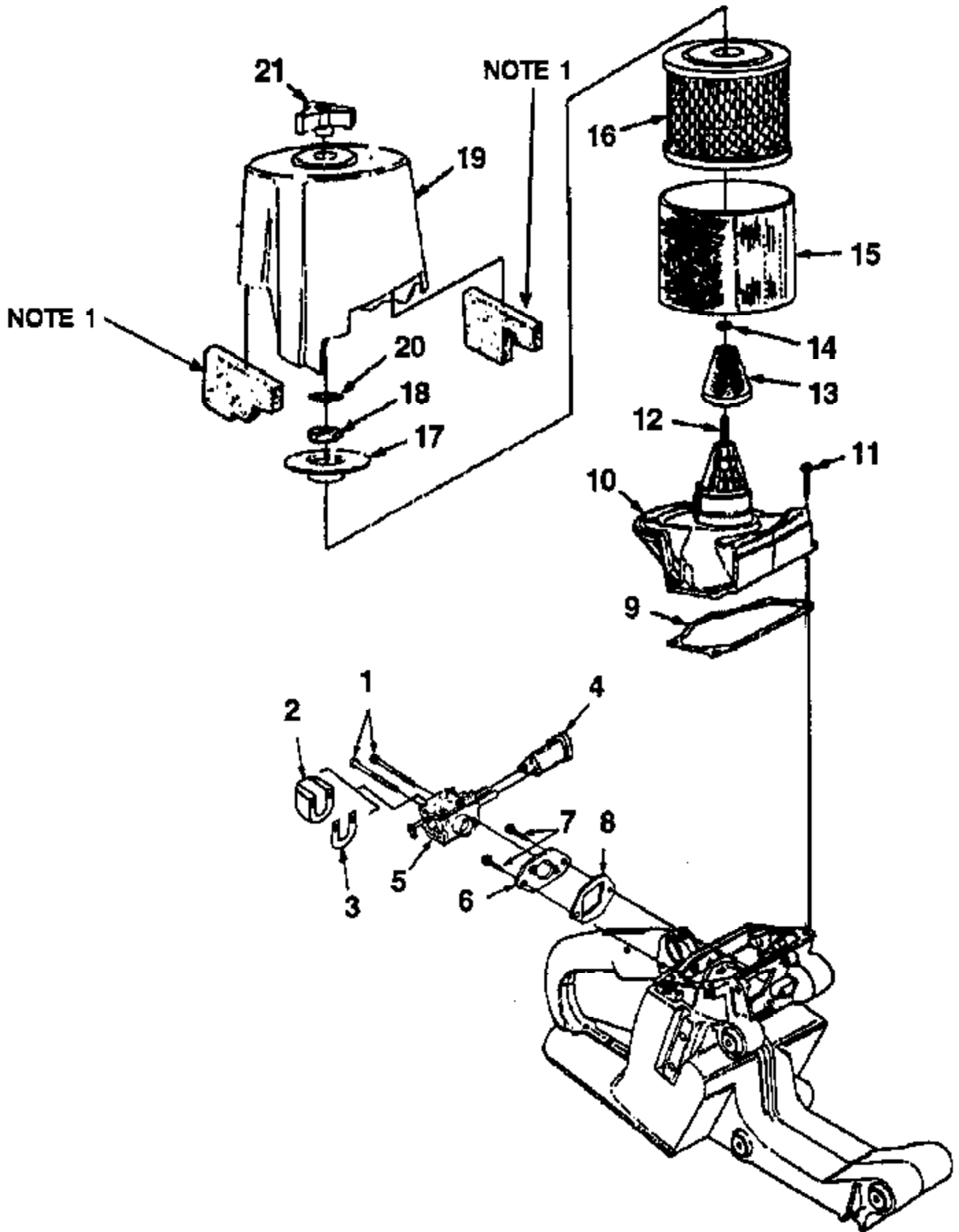
Parts List  
Only

Ref #	Part Number	Qty	Description
	UT05064		Dolly kit W/Depth Gage
	A18009A		Carry Case with Insert
	A49649		Wet Cut Kit
	98827		Spark Arrestor Screen
	A24824		Combination Wrench (5/8, 3/4, & Screwdriver)
	03000		1/2 Wrench
	A17106B		Puller Rotor

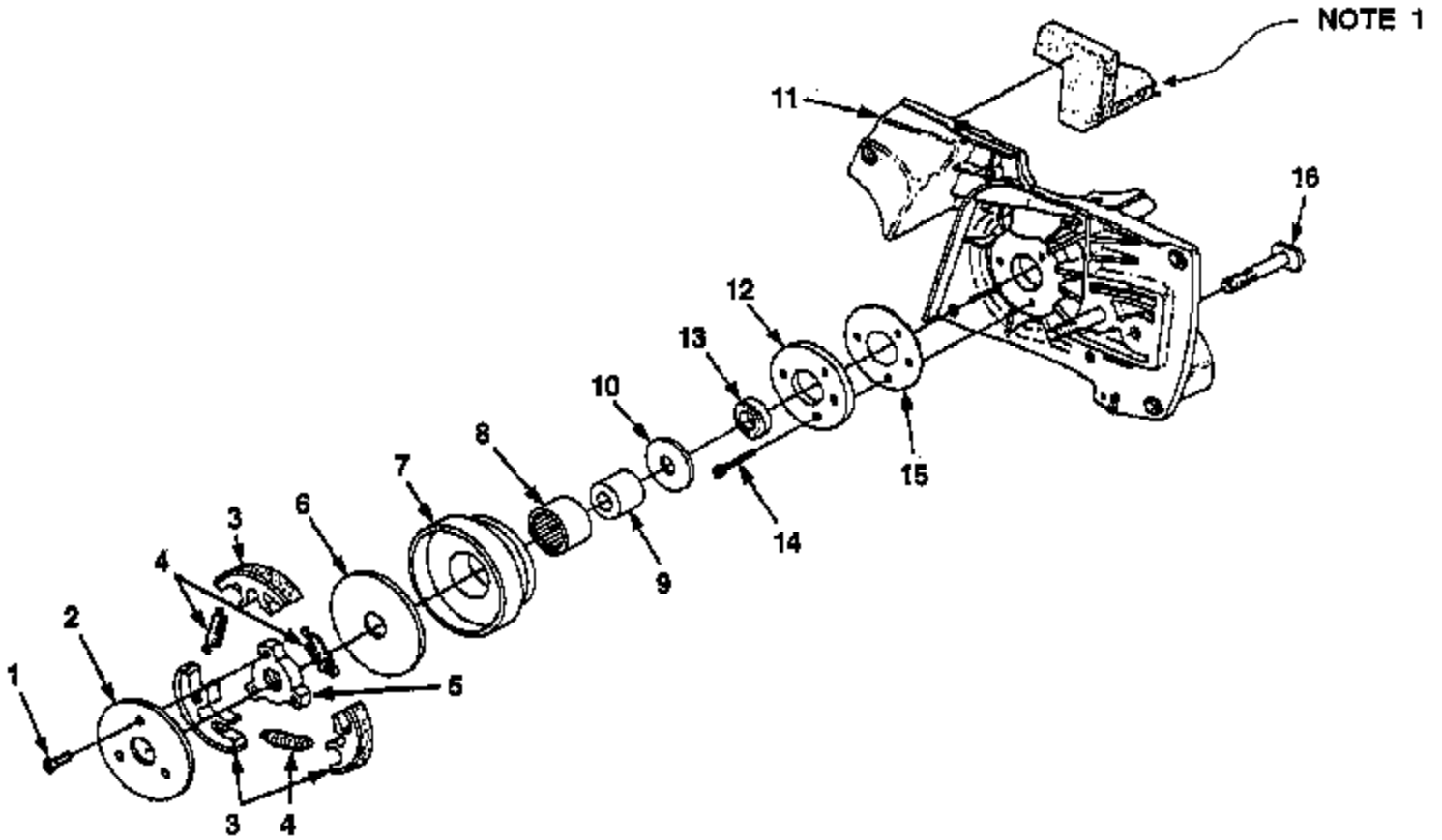
No  
Diagram  
Available

Parts List  
Only

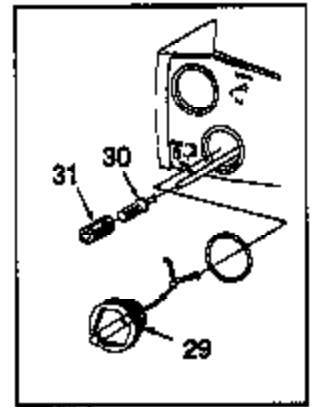
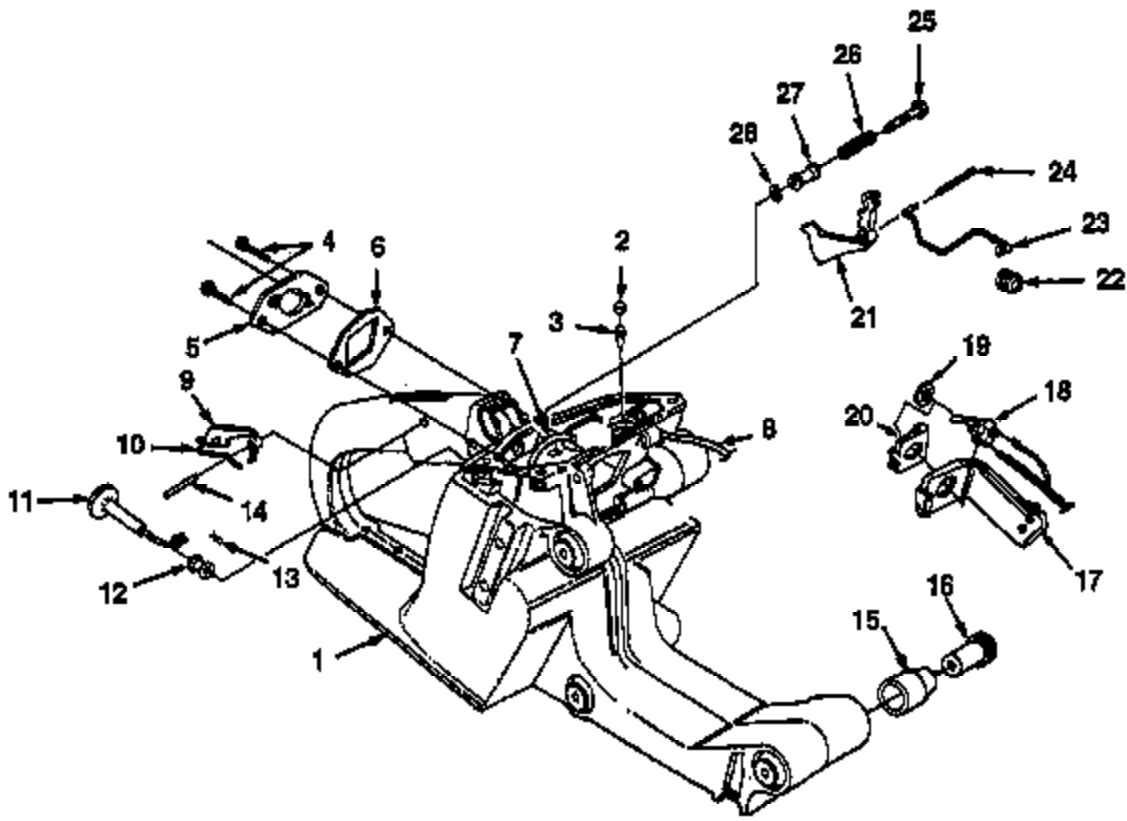
Ref #	Part Number	Qty	Description
	64596C		Masonry and Concrete 12 Inch Abrasive Wheel - Arbor Size: 1"
	43230AS		Masonry and Concrete 12 Inch Abrasive Wheel - Arbor Size: 7/8"
	49826		Masonry and Concrete 12 Inch Abrasive Wheel - Arbor Size: 20mm
	49559		Masonry and Concrete 14 Inch Abrasive Wheel - Arbor Size: 1"
	49765A		Masonry and Concrete 14 Inch Abrasive Wheel - Arbor Size: 20mm
	64597C		Metal 12 Inch Abrasive Wheel - Arbor Size: 1"
	43232AS		Metal 12 Inch Abrasive Wheel - Arbor Size: 7/8"
	49824		Metal 12 Inch Abrasive Wheel - Arbor Size 20mm
	49561		Metal 14 Inch Abrasive Wheel - Arbor Size 1"
	49768A		Metal 14 Inch Abrasive Wheel - Arbor Size 20mm
	68421B		Ductile and Cast Iron 12 Inch Abrasive Wheel - Arbor Size 1"
	43231AS		Ductile and Cast Iron 12 Inch Abrasive Wheel - Arbor Size 7/8"
	49825		Ductile and Cast Iron 12 Inch Abrasive Wheel - Arbor Size 20mm
	49560A		Ductile and Cast Iron 14 Inch Abrasive Wheel - Arbor Size 1"
	49767A		Ductile and Cast Iron 14 Inch Abrasive Wheel - Arbor Size 20mm
	03707		Asphalt 12 Inch Abrasive Wheel - Arbor Size 1"
	03696		Asphalt 14 Inch Abrasive Wheel - Arbor Size 1"
	A49751A		Premium Segmented Rim 12 Inch Diamond Wheel - Arbor Size 1"
	A49572A		Premium Segmented Rim 14 Inch Diamond Wheel - Arbor Size 1"
	A49753A		Premium Continuous Rim 12 Inch Diamond Wheel - Arbor Size 1"
	A04831A		Premium Continuous Rim 14 Inch Diamond Wheel - Arbor Size 1"
	08831		Carbide, Junkyard Dog(TM) Saw Blade - Arbor Size 1"
	A49429D		12" Wheel Arm w/ 1" Arbor - Replacement Arm Assembly (Includes spaces for 1", 22mm & 20mm wheel arbor)
	A49550C		14" Wheel Arm w/ 1" Arbor - Replacement Arm Assembly (Includes spaces for 1", 22mm & 20mm wheel arbor)



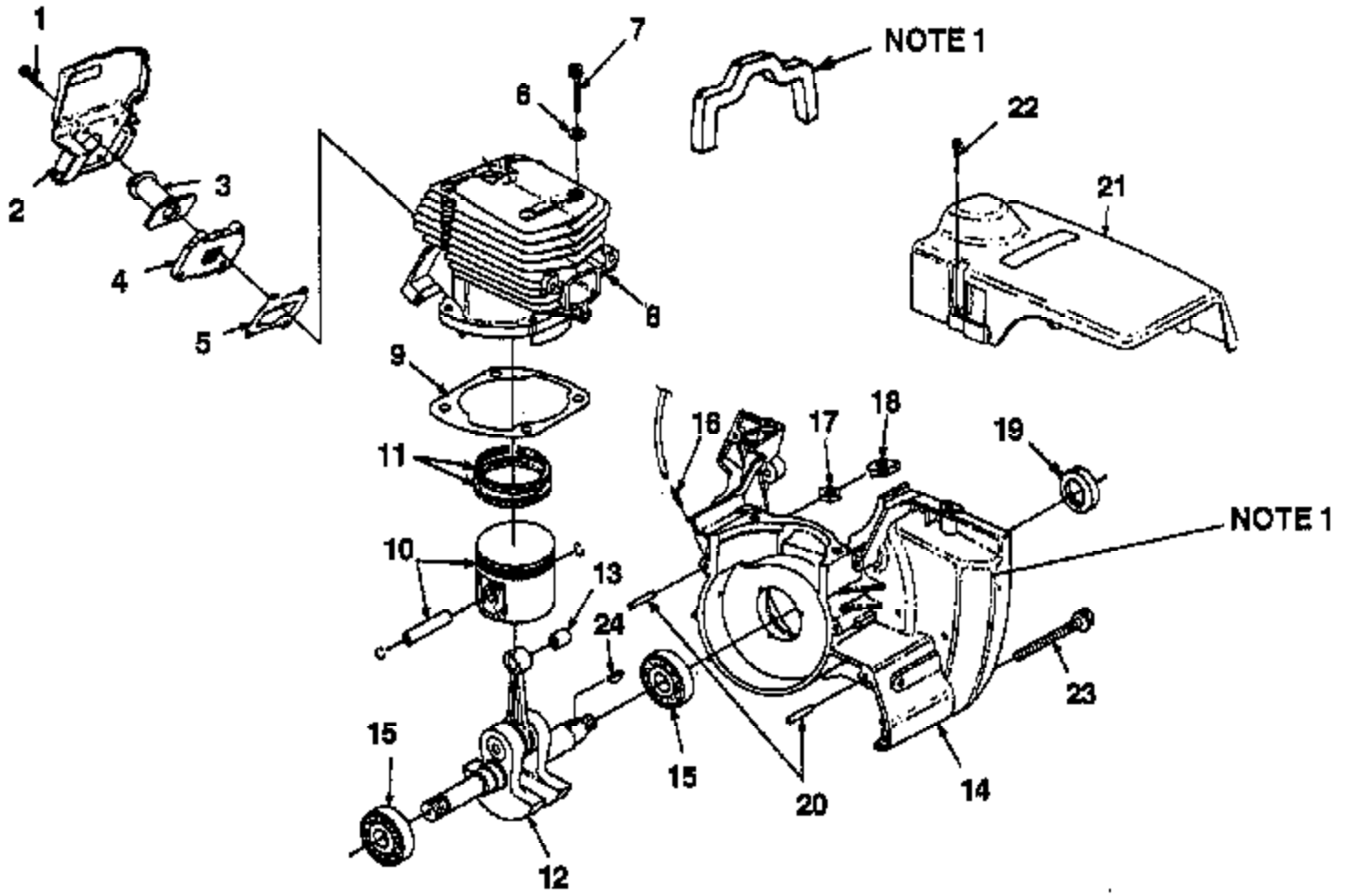
Ref #	Part Number	Qty	Description
1	82527	2	SCREW-Hex Cap (10-14 x 2") Torque Specs: 40-50 In/Lbs; 4.5-5.6 Nm; 262 Red Required Loctite
2	496732	1	SHIELD-Carburetor
3	49671	1	GASKET-Carburetor Shield
4	PS97295	2	GROMMET
5	A49510A	1	CARBURETOR
6	A972902A	1	ADAPTER-Carburetor
7	96620	2	SCREW-Torx Truss (10-24 x 1/2") Torque Specs: 30-40 In/Lbs; 3.4-4.5 Nm; 262 Red Required Loctite
8	PS97291	1	GASKET-Carburetor
9	PS97298	1	GASKET-Carb. Chamber
10	49509A	1	COVER-Carb. Chamber
11	80582	4	SCREW-Pan Hd. (8-32 x 5/8") Torque Specs: 30-40 In/Lbs; 3.4-4.5 Nm; 262 Red Required Loctite
12	49511A	1	BOLT
13	49555	1	FILTER-Air
14	94150	2	"O" Ring
15	49513	1	FELT PREFILTER
16	49512	1	ELEMENT-Air Filter
17	498981	1	AIR FILTER ELEMENT COVER
18	81162	1	NUT-Hex (5/16-18)
19	A49514A	1	FILTER COVER
20	06365	1	KNOB
21	46072	1	RETAINING RING
NOTE1	A03611A		FOAM KIT



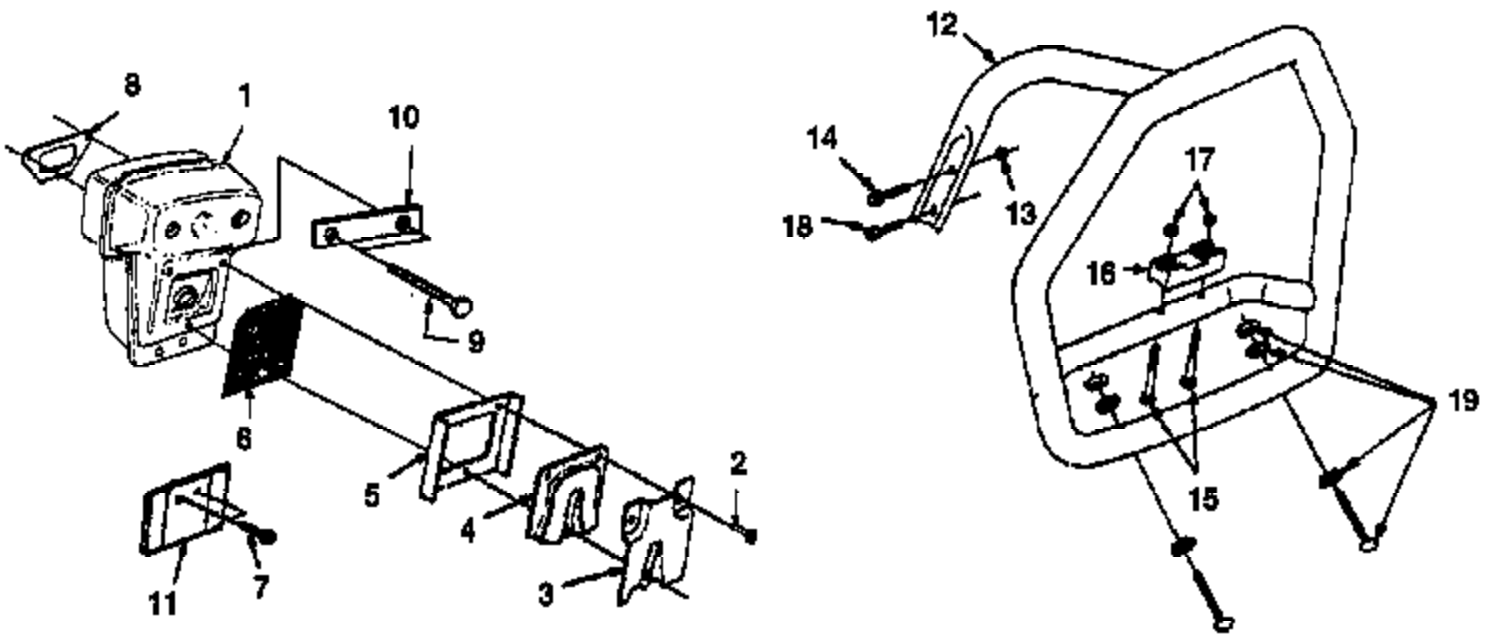
Ref #	Part Number	Qty	Description
1	88041	3	SCREW-Hex Sems (8-32 x 3/4") Torque Specs: 30-40 In/Lbs; 3.4-4.5 Nm; 262 Red Required Loctite
2	93628	1	CLUTCH COVER
3	A93632B	3	CLUTCH SHOE
4	93638A	3	CLUTCH SPRING
5	93639	1	CLUTCH SPIDER Torque Specs: 400 In/Lbs; 45.2 Nm
6	93650	1	WASHER-Thrust
7	A49543	1	PULLEY & DRUM
8	46071	1	NEEDLE BEARING
9	46070	1	RACE-Inner
10	46135	1	WASHER-Thrust
11	A08391	1	CRANKCASE ASSY. (COMPLETE)
12	A49537A	1	RETAINING-Bearing
13	12306	1	SEAL
14	82293	3	SCREW-Socket Cap (10-24 x 5/8") Torque Specs: 40-50 In/Lbs; 4.5-5.6 Nm; 262 Red Required Loctite
15	00191D	1	GASKET
16	82595	2	WHEEL ARM BOLT (5-16-18 x 2.5")
	81208	4	NUT-Hex Lock (10-24) (Not shown)
	12689A	2	RETAINER-Nut (Not shown)
	58308B	1	SEAL-Shaft (Not Shown)
NOTE1	A03611A		FOAM KIT



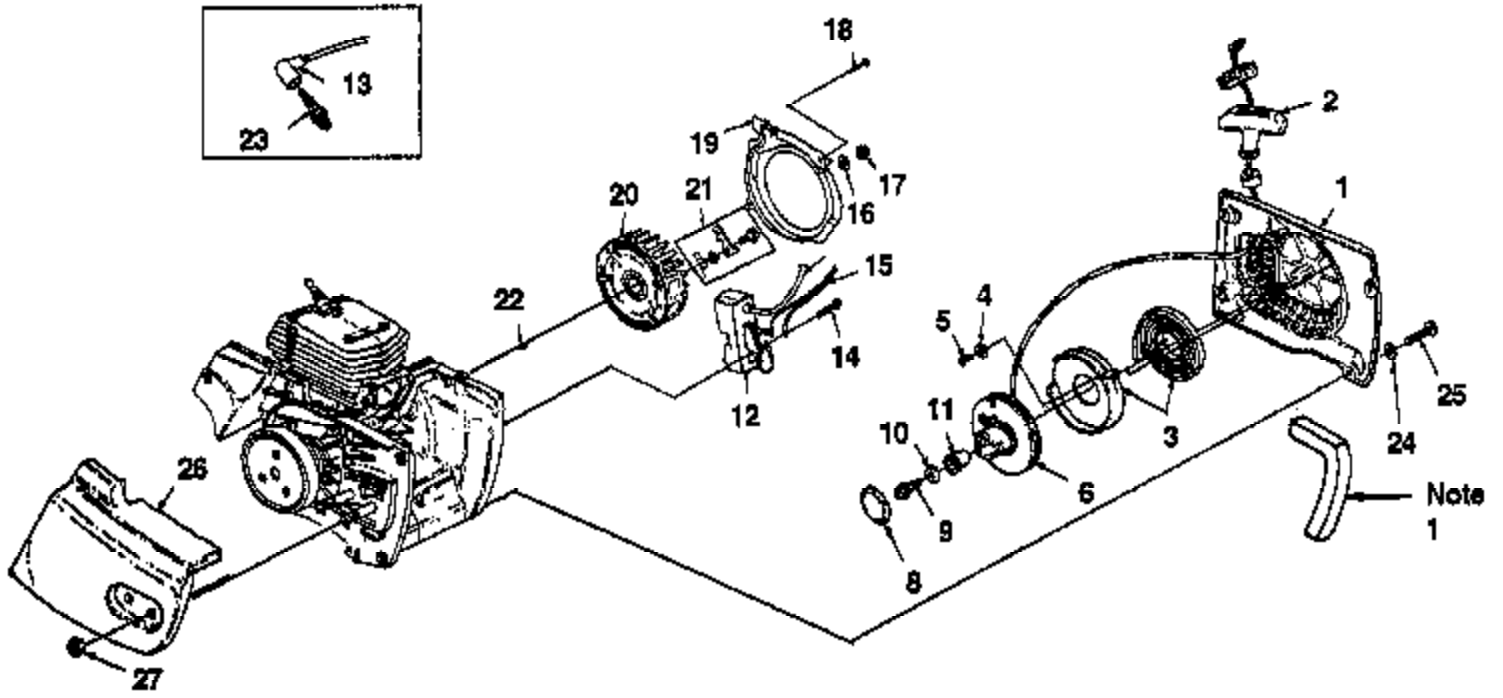
Ref #	Part Number	Qty	Description
1	A49770A	1	HOUSING-Engine
2	93410A	2	TANK VENT FILTER
3	96841	1	VALVE-Duck Bill
4	96620	2	SCREW-Torx Truss (10-24 x 1/2") Torque Specs: 50-60 In/Lbs; 5.6-6.7 Nm; 262 Red Required Loctite
5	972902A	1	ADAPTOR-Carburetor
6	PS97291	1	GASKET-Carburetor
7	9311237	1	TUBING-Rubber (Fuel Line, 9 1/2")
8	9315723	1	TUBING-Rubber (Pulse Line, 6 1/2")
9	93385A	1	TRIGGER-Lock
10	PS97265	1	SPRING-Flat
11	972921	1	ROD-Choke
12	64862	1	GROMMET
13	86324	1	PIN-Cotter
14	68548	1	PIN-Trigger
15	973052	6	ISOLATOR-Vibration
16	PS97262	6	SLEEVE-Flanged
17	PA97306A	1	COVER, Switch
18	A57650A	1	SWITCH-Toggle
19	72084A1	1	NUT-Hex
20	12793A	1	PLATE-Indicating
21	93842	1	TRIGGER-Throttle
22	69889	1	BOOT-Throttle Rod
23	97294A	1	ROD-Throttle
24	68548	1	PIN-Trigger
25	95671	1	PIN-Throttle Lock
26	95020	1	SPRING-Compression
27	95989	1	BUSHING-Flanged
28	58409	1	RING-Retaining
29	A03131	1	FUEL CAP
30	A97700	1	FUEL FILTER
31	592531A	1	FILTER ELEMENT



Ref #	Part Number	Qty	Description
1	82246	4	SCREW-Mach. Hex Hd. (10-24 x 1") Torque Specs: 20-30 In/Lbs; 2.3-3.4 Nm; 262 Red Required Loctite
2	973381A	1	BAFFLE-Cylinder
3	972632	1	BOOT-Intake
4	02822	1	ADAPTER-Intake
5	04635	1	GASKET-Intake
6	12021	4	WASHER-Conical (#10)
7	82246	4	SCREW-Cap Socket (10-24 x 1") Torque Specs: 80-90 In/Lbs; 9.0-10.2 Nm; 262 Red Required Loctite
8	A02830A	1	CYLINDER & PISTON (Matched)
9	PS97316	1	GASKET-CYLINDER
10	A028241B	1	PISTON & PIN ASSY.
11	02825	2	PISTON RING
12	A03737	1	CRANKSHAFT & ROD
13	93519	1	BEARING-Needle
14	A08391	1	CRANKCASE ASSY. (See "Crankcase" illustration and parts list item 11)
15	94621A	2	BEARING-Ball
16	69833	1	FITTING-Tube
17	81208	2	NUT-Lock Hex (10-24)
18	12689A	2	NUT-Retainer
19	58308B	1	SEAL-Shaft
20	PS31062	1	PIN-Dowel
21	A02121	1	COVER-CYLINDER
22	93397A	3	SCREW-CYLINDER COVER Torque Specs: Hand Tight
23	88057	5	SCREW-Hex Sems (10-24 x 2")
24	75078	1	KEY-Woodruff
NOTE1	A03611A		FOAM KIT



Ref #	Part Number	Qty	Description
1	A04430	1	MUFFLER ASSY.
2	80983	3	SCREW-Mach. Hex (8-32 x 1/2") Torque Specs: 25-30 In/Lbs; 2.8-3.4 Nm
3	A49545	1	SHIELD-Muffler
4	49525	1	CAP-Muffler
5	49548	1	SUPPORT-Spark Arrestor
6	98827	1	SCREEN-Spark Arrestor
7	825551	2	SCREW-Truss Hd. (10-24 X 3/4")
8	97682B	1	GASKET-Muffler
9	82592	2	SCREW-Cap Hex Hd. (1/4-20 X 3 1/4") Torque Specs: 100-140 In/Lbs; 11.3-15.8 Nm
10	04423	1	SHIELD-Muffler Cover
11	04431A	1	PLATE-Retaining
12	A495951	1	HANDLE BAR
13	81208	2	NUT-Hex Lock (10-24)
14	825551	1	SCREW-Truss Hd. (10-24 X 3/4") Torque Specs: 60-70 In/Lbs; 6.7-7.9 Nm
15	96212	2	NUT-Locking (1/4-28")
16	496222	1	BRACKET-Handle Bar
17	82532	2	SCREW-Mach. Oval Hd. (1/4-20 X 1/2") Torque Specs: 120-140 In/Lbs; 13.5-15.8 Nm; 262 Red Required Loctite
18	96620	2	SCREW-Truss Torx (T25) Torque Specs: 60-70 In/Lbs; 6.7-7.9 Nm; 262 Red Required Loctite
19	A03633	1	WEAR PAD KIT



Ref #	Part Number	Qty	Description
1	A02292A	1	STARTER COMPLETE
2	A69962B	1	GRIP-w/Insert
3	A98067A	1	SPRING & RETAINER
4	84025	3	WASHER-Flat (#8)
5	82528	2	SCREW-Thread Form. (6 x 3/8") Torque Specs: 8-12 In/Lbs; .9-14 Nm
6	A97990C	1	PULLEY & ROPE
7	A00518	1	ROPE
8	02505	1	SPRING-Grip
9	82409	1	SCREW-Plastite (10-14 x 5/8") Torque Specs: 30-40 In/Lbs; 3.4-4.5 Nm
10	58763	1	WASHER-Retaining
11	97992A	1	BUSHING-Starter Post
12	A01827	1	MODULE ASSY.
13	A33055	1	TERMINAL-Spark Plug
14	82562	2	SCREW-Hex Hd. (10-24 x 7/8") Torque Specs: 50-60 In/Lbs; 5.6-6.8 Nm; 262 Red Required Loctite
15	A985831D	1	LEAD-Ground w/Grommet
16	95479A	1	WASHER-Flat
17	81255	1	NUT-Lock Hex (3/8-24)
18	80582	2	SCREW-Mach. (8-32 x 5/8") Torque Specs: 30-40 In/Lbs; 3.4-4.5 Nm
19	02133	1	SCROLL-Air Guide
20	A02085B	1	ROTOR
21	A03610	1	STARTER PAWL KIT
22	75078	1	KEY-Woodruff
23	98217S	1	SPARK PLUG (RCJ6Y)
24	84003	4	WASHER-Flat (#10)
25	82562	4	SCREW-Pan Hd. (10-24 X 5/8") Torque Specs: 40-50 In/Lbs; 4.5-5.6 Nm
26	478695	1	COVER - Drivecase
27	810892	2	NUT-(3/8-16 x 5/16")
NOTE1	A03611A		FOAM KIT