

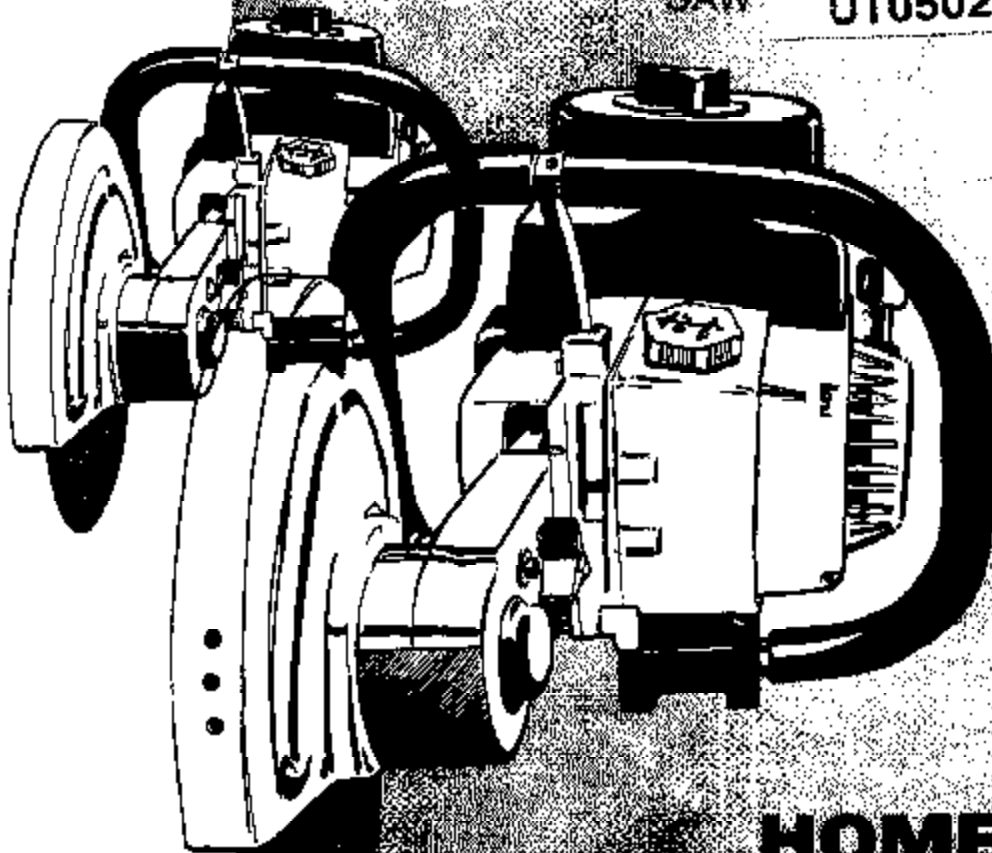
PART NO. 17331
Printed in U.S.A.
Price 35¢

Parts List

HOMELITE®

DM 20

MULTI-PURPOSE
SAW UT05022



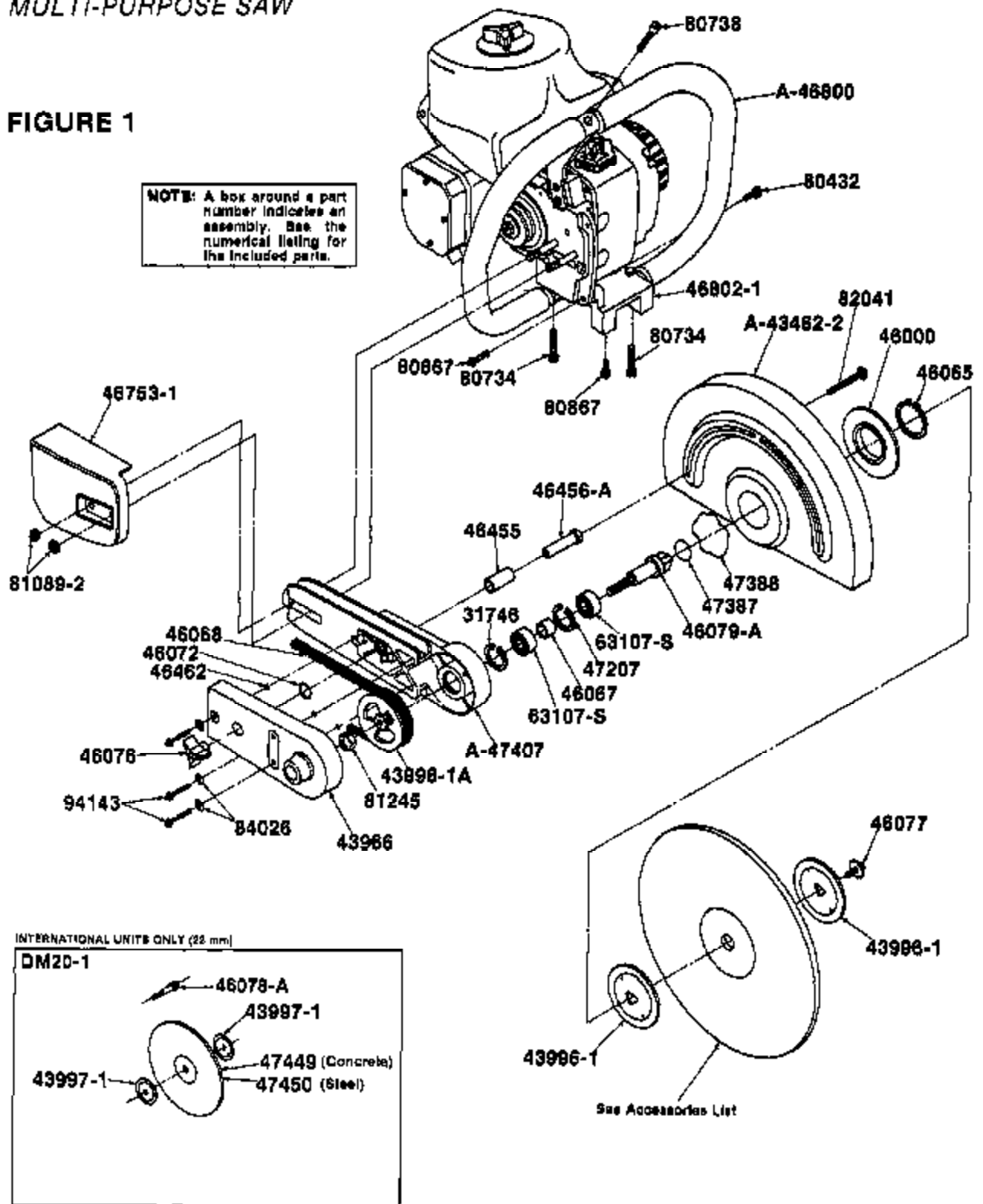
HOMELITE
LEXTRON

Homelite Division of Tektron Inc.

DM 20
MULTI-PURPOSE SAW

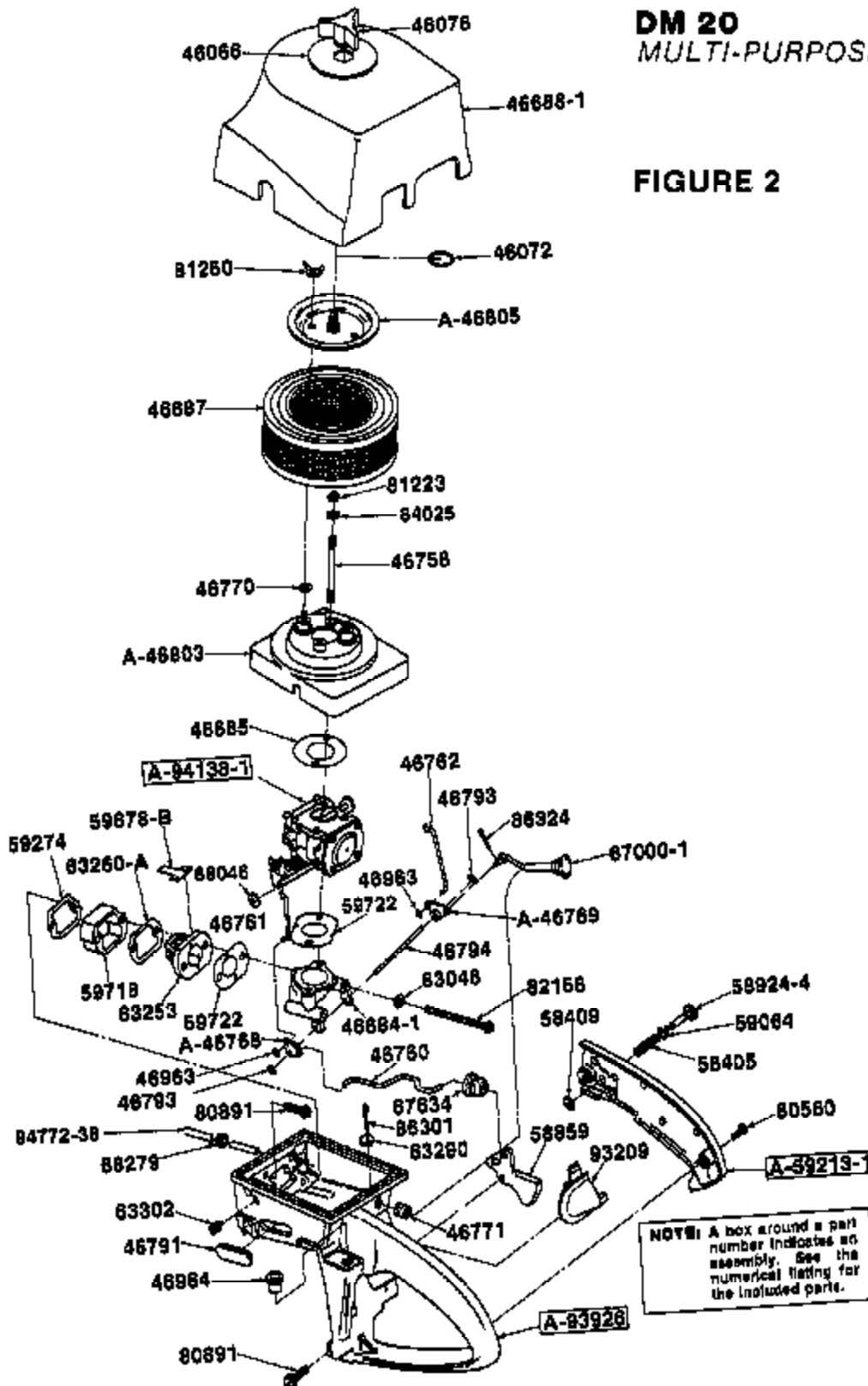
FIGURE 1

NOTE: A box around a part number indicates an assembly. See the numerical listing for the included parts.

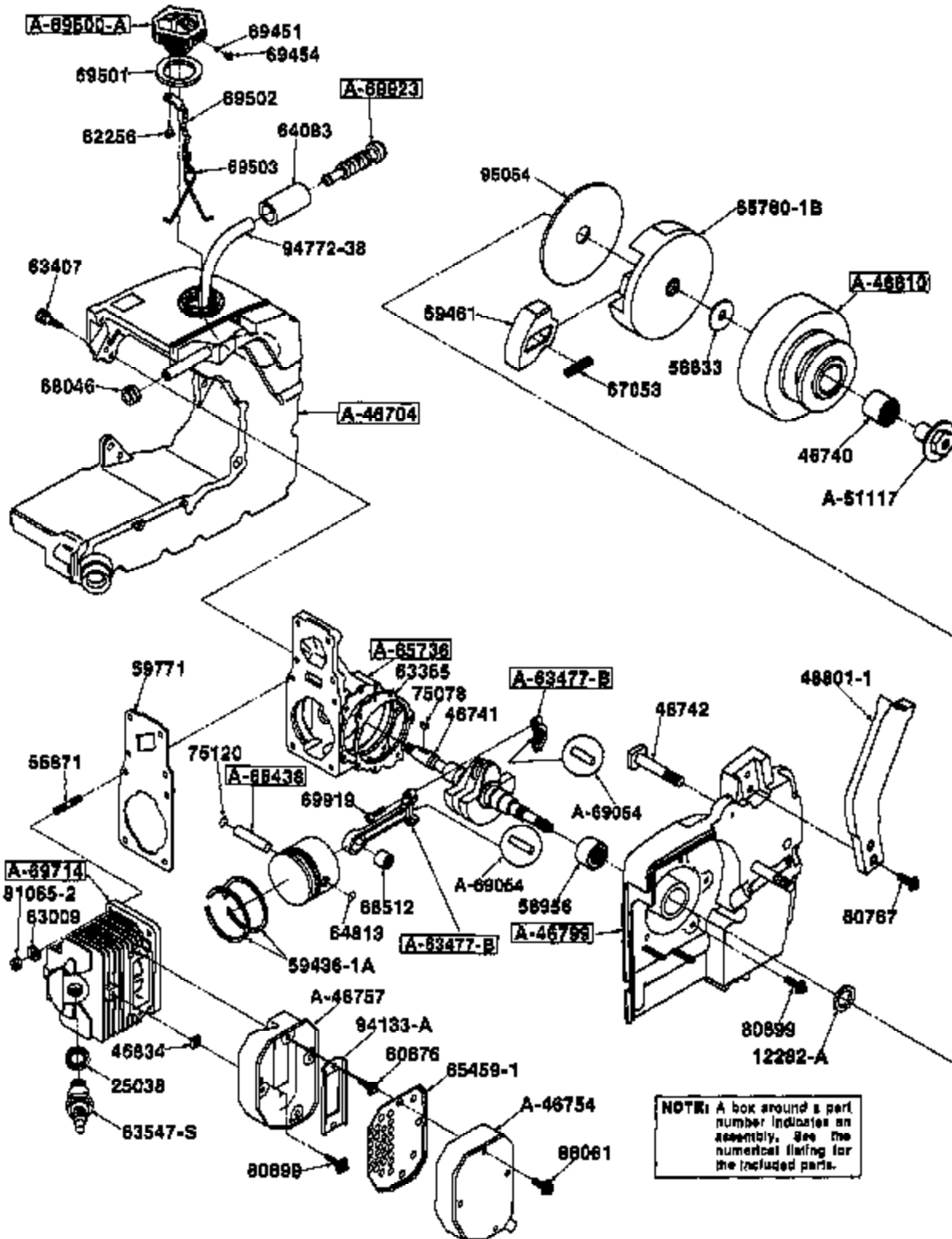


DM 20
MULTI-PURPOSE SAW

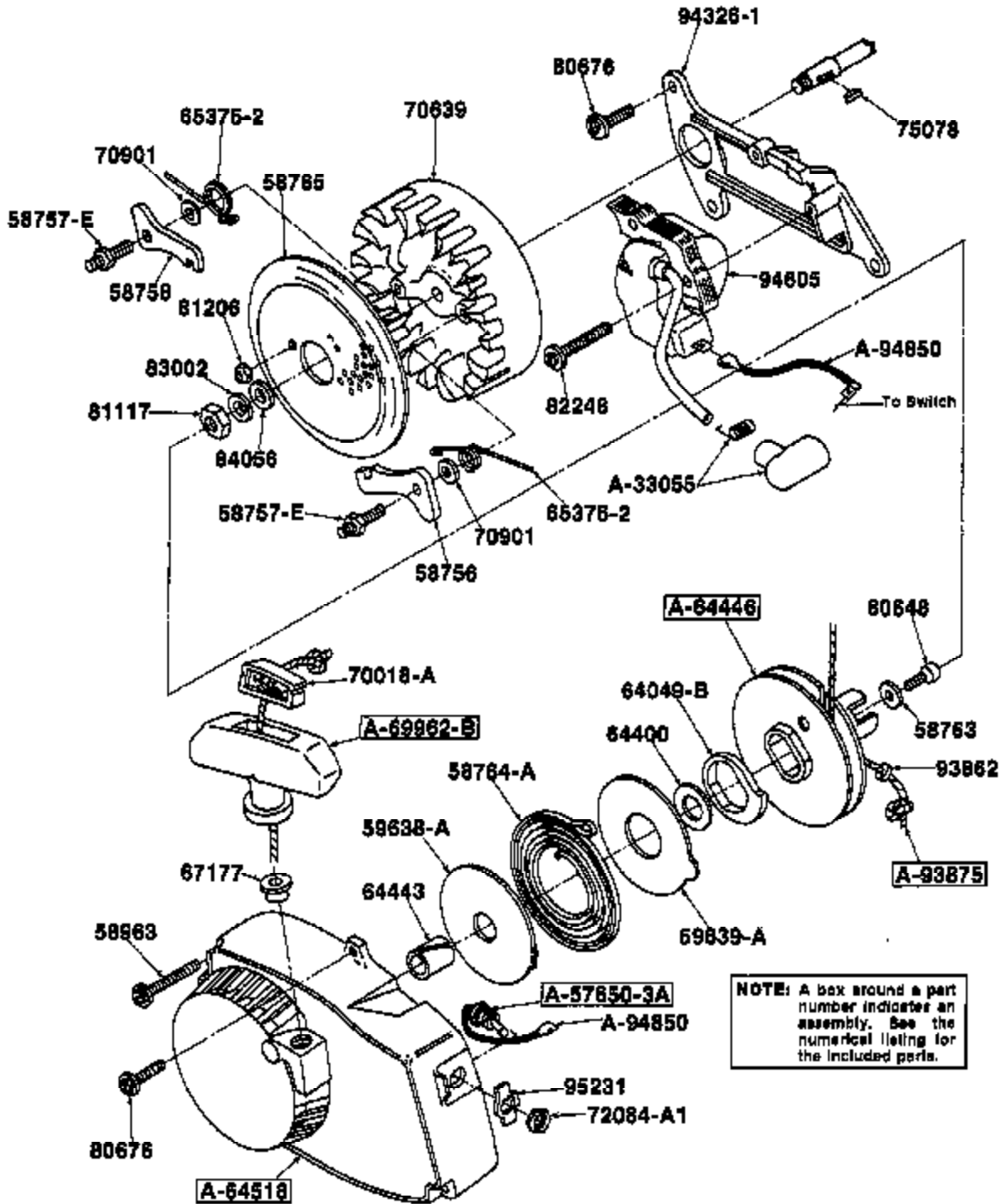
FIGURE 2



DM 20
MULTI-PURPOSE SAW
FIGURE 3



DM 20
MULTI-PURPOSE SAW
FIGURE 4

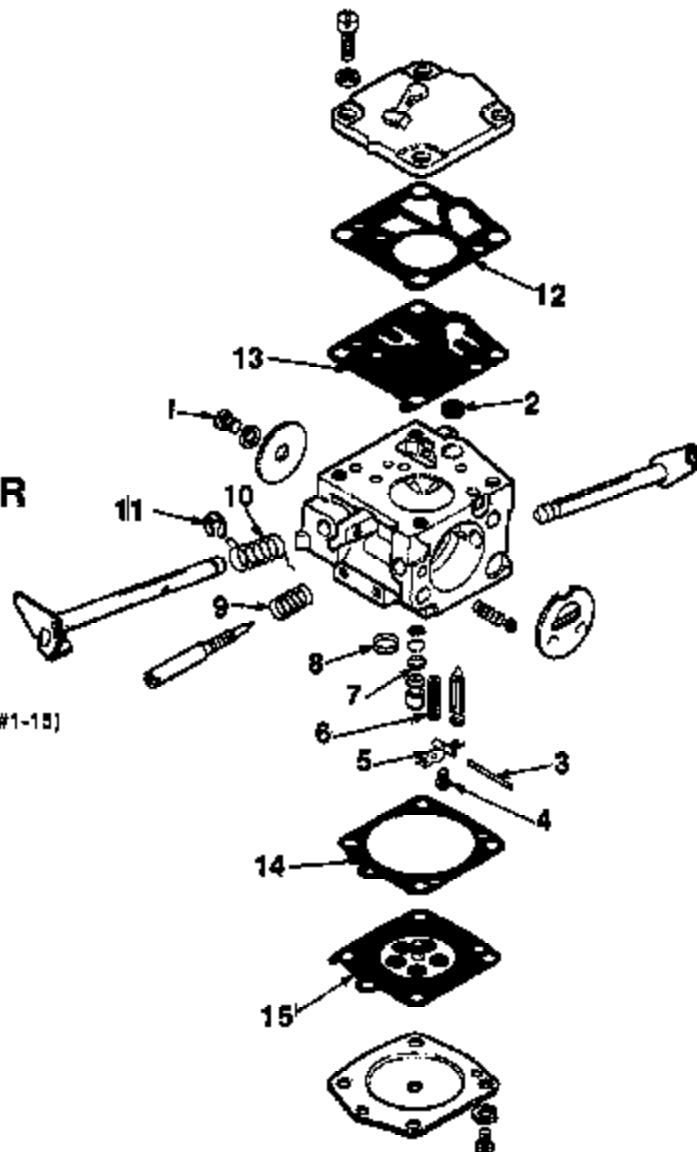


DM 20 MULTI-PURPOSE SAW

CARBURETOR HS-202-A

A-94138-1

95898 Repair Kit (includes #1-15)



TOOLS, ACCESSORIES AND PARTS

NUMERICALLY LISTED

DC-4 Compound	22636-A	PULLER- Magneto rotor	A-23960
PLIERS- Retaining ring (piston)	22626	WRENCH- Combination	A-24085-A
WRENCH- Socket Screw	23528	WRENCH- Combination	A-24284
TOOL- Needle bearing	23756	SCREWDRIVER	24541
TOOL- Needle bearing	23757	SHIM- Plastic	24853
PLUG- Seal	23768	KIT- Wet cutting	A-48477
SLEEVE- Seal protecting	23769	SCREW- Mach. hex hd. (adj. arm)	48638
SLEEVE- Seal installation	23800	BLADE- Carbide	84595-B
PLUG- Needle bearing installation	23819	WHEEL- Resinoid (concrete) (std.)	84598-BB
SPANNER WRENCH- Clutch	A-23934	WHEEL- Resinoid (concrete) DM-20-1 (std.)	47449-(22mm)
Includes:		WHEEL- Resinoid ductile (opt.)	64587-B5
PIN	23954	WHEEL- Resinoid Steel (opt.)	88421-A6
WRENCH- Combination	A-23937-B	WHEEL- Resinoid Steel (DM-20-1) (opt.)	47450-(22mm)
PLUG- Piston pin removal	A-23949	WRENCH- Socket	88851
Includes:			
"O" Ring	67900		

NUMERICAL LISTING

12282-A	Seal	2	47353	Spring-Weave	1	83339	Screw- Pan Hd	1
*00835-A	DC-4 Compositnd		A-47407	Arm- Wheel	1		(#6-1/4)	
*22929	Flirt- Retaining Ring (Piston)		47448	Wheel- Concrete	1	A-48714	Cylinder	1
*23528	Wrench- Eched Screw		47459	Wheel- Steel	1		Includes	
*23748	Tool- Needle Bearing		A-8111F	Rece- Motor Flange	1	58721	Gasket- Cylinder	1
*23757	Tool- Needle Bearing		86371	Stud- Cylinder	4	89819	Screw- Cap	2
*23758	Plug- Seal		A-67850-3A	Switch- Grounding	1		(#-22 x 1/2)	
*23759	Stems- Seal Protecting			Includes		A-89823	Fiber- Fuel	1
*23800	Stems- Seal Installation		72084-A1	Nut- Hex	1		Includes	
*25819	Plug- Needle Bearing		88408	Spring- Throttle Lock	1	84023	Element- Fuel Filter	1
*A-24824	Spanner Wrench- Clutch		88409	Ring- Retaining	1	A-89823-B	Gmp- Starter Wheel	1
	Includes		88788	Finger- Starter	2		Includes	
*25964	Pin- Clutch Spanner		88787-E	Stud- Shoulder	2	70016-A	Inspri- Rope Retaining	1
*A-25967-B	Wrench- Combination		88788	Washer- Retaining	1	70839	Roller	1
*A-25968	Plug- Piston Pin Removal		88789-A	Spring- Rewind	1	70801	Washer- Lock RT2	2
	Includes		88785	Blotch- Screen	1	72084-A1	Nut- Hex	1
*87950	"O" Ring		88823	Washer- Thru	1	75078	Key- Woodruff	1
*23954	Pin- Clutch Spanner		88888	Throttle- Trigger	1	78120	Ring- Pin	1
*A-23960	Pulley- Magneto Roller		88924-A	Pin- Throttle Lock	1	80432	Screw- Cap 800 Hd	1
*A-24028-A	Wrench- Combination		88988	Bearing- Needle	2		(1/4-20 x 1/2)	
*A-24284	Wrench- Combination		89983	Screw- Pan Hd	2	80880	Screw- Pan Hd	2
*24541	Screwdriver			(#-24 x 1 1/8)			(#-22 x 1/2)	
*24892	Shim- Plastic		89984	Bushing- Nylon	1	80888	Screw- Hex Mech	1
83038	Gasket- Spark Plug	1	A-89813-1	Cover- Throttle Handle	1		(#-24 x 1 1/4)	
87446	Ring- Retaining	1		Includes		80878	Screw- Mach Hex Hd	8
A-89035	Terminal- High Tension Lead	1	88064	Bushing- Nylon	1		(#-24 x 3/8)	
A-89482-2	Blade- Guard	1	89274	Gasket- Spacer	1	80734	Screw- Cap 800 Hd	2
43806	Cover- Arm	1	88438-1A	Ring- Piston	2		(1/4-20 x 1 1/4)	
43906-1	Flange- Wheel	1	88638-A	Shield- Spring	1	80738	Screw- Cap 800 Hd	1
43967-1	Flange- Wheel	1	88639-A	Shield- Spring	1		(#-24 x 1 1/4)	
43988-1A	Pulley- Drive	1	88678-B	Gasket- Reed	4	80807	Screw- Mach Hex Hd	8
44000	Washer- Mounting	1	88717	Needle- Inlet	1		(#-24 x 3/4)	
44005	Washer- Retaining	1	88718	Dish- Heat	1	80821	Screw- Mach Hex Hd	6
60080	Washer- Flat	1	88722	Gasket- Carburetor	2		(#-24 x 7/8)	
60087	Spacer- Sealing	1	88771	Gasket- Cylinder	1	80880	Screw- Mach Hex Hd	7
60088	Ball- V-Drive	1	89107-4	Bearing- Ball	2		(#-24 x 8/16)	
60072	Ring- Retaining	1	89289	Ball- Reed Valve	1	81068-2	Nut- Hex	4
60075	Knob	1	83289-A	Ratchet- Road Valve	1		(#-28)	
60077	Screw- Hex Hd	1	83290	Washer- Flat	1	81068-2	Nut- Hex	2
	(3/8-24 x 3/4)		83302	Screw- Idle Adjusting	1		(#-28-16)	
60078-A	Shank- Wheel	1	83325	Gasket- Crankcase	1	81117	Nut- Hex	1
60079-A	Shank- Wheel	1	83407	Screw- Hex Hd	3		(#-18-24)	
60465	Tubing- Rubber	1		(1/4-20 x 3/4)		81200	Nut- Hex	3
85458-A	Spacer- Ground Adjusting	1	A-83477-B	Rod- Connecting	1		(#-28)	
86488	"O" Ring	2		Includes		81223	Nut- Carrier Lock	2
*A-86477	Kit- Wet Cutting		88810	Bushing- Needle	1		(#-22)	
86894-1	Manifold- Inlet	1	88919	Screw- Cap	1	81845	Nut- Hex Lock	1
86898	Gasket- Carburetor	1		(#-22 x 1/2)			(1/2-13)	
86887	Element- Air Filter	1	88847-5	Spark Plug	1	81850	Nut- Wing	2
86888-1	Cover- Air Filter	1	84048-B	Lock- Spring	1		(#-28)	
A-86704	Tank- Fuel	1	88882	Element- Fuel Filter	1	82041	Bolt- Button Hd	1
	Includes		84400	Bushing- Spring Lock	1		(5/16-18 x 2 1/2)	
88048	Grommet	1	84443	Bushing- Starter Post	1	82104	Screw- Mach Hex Hd	2
A-88223	Filter- Fuel	1	A-84448	Pulley- Rewind Starter	1		(#-22 x 1 1/2)	
	Includes		84048-B	Includes		82848	Screw- Mach Hex Hd	2
84043	Element- Fuel Filter	1	84420	Lock- Spring	1		(#-22 x 3/4)	
84779-3B	Tubing- Rubber	1	A-84618	Bushing- Spring Lock	1	82288	Screw- Pan Hd	1
48740	Bearing- Needle	1		Housing- Fan & Rewind			(#8 - 1/4)	
48741	Crankshaft	1		Includes		83003	Washer- Lock	1
48742	Ball- Arm	1	84443	Bushing- Starter Post	1		(#18)	
48783-1	Cover- Drivecase	1	87177	Bushing- Starter Cover	1	83008	Washer- Lock	4
A-48784	Muller Cap & Tube	1	84888-B	Blade- Saw	1		(1/4)	
A-48787	Body- Muller	1	84888-B6	Wheel- Scumold Concrete	1	83048	Washer- Lock	2
48788	Stud	2	84887-B8	Wheel- Scumold Qualls	1		(#16)	
48789	Rod- Throttle	1	84813	Piston Pin	1	84038	Washer- Flat	3
48781	Rod- Throttle	1	88375-2	Spring- Starter Finger	2		(#8)	
48782	Rod- Choke	1	88489-1	Ballie- Muller	1	84028	Washer- Flat	3
A-48788	Ballcrank	1	A-85739	Crankcase	1		(1/4)	
A-48788	Ballcrank	1		Includes		84038	Washer- Flat	1
48778	Washer- Sealing	2	86871	Stud- Cylinder	1		(#18)	
48771	Grommet	1	86789-1B	Plate- Clutch	1	84001	Pin- Collar	1
48781	Grommet	1	87000-1	Rod- Choke	1	84324	Pin- Collar	1
48793	Ring- Retaining	2	87043	Spring- Clutch	1		(#-22 x 1/2)	
48794	Shaft	1	87177	Bushing- Starter Cover	1	84081	Screw- Hex Hd	4
A-48799	Drivecase	1	87834	Ball- Throttle Rod	1		(#-22 x 1 3/4)	
	Includes		87900	"O" Ring	1	83288	Shield- Spark Plug	1
12282-A	Seal	1	88046	Grommet	2	83888	Washer- Nylon	1
46742	Bolt- Arm	1	88279	Grommet	1	A-83878	Rope- Starter	1
48691-1	Brace- Handle	1	88421-A8	Wheel- Raining	1		Includes	
88688	Bearing- Needle	1	A-88438	Piston	1	83888	Washer- Nylon	1
80887	Screw- Mach Hex Hd	1		Includes		A-83986	Handle- Throttle	1
	(#-24 x 3/4)		88438-1A	Ring- Piston	1		Includes	
A-88800	Handle Bar	1	84813	Piston Pin	1	83290	Washer- Flat	1
48801-1	Brace- Handle	1	78120	Ring- Pin	1	88301	Pin- Collar	1
88902-1	Support- Foot	1	88512	Bearing- Needle	1	84133-A	Plate- Muller	1
A-88803	Support- Air Filter	1	89861-1	Wrench- Socket	1	A-84133-1	Carburetor	1
A-88808	Plate & Stud	1	A-89864	Roller- Needle	1		Includes	
A-88910	Pulley Drive & Bearing	1	89461	Valve- Check	1	88888	E.N. Repair	1
	Includes		89464	Filter- Fuel Cap	1	84143	Screw- Blotted Hex	3
48760	Bearing- Needle	1	89461	Shoe- Clutch	3		(1/4-20 x 1 1/4)	
48834	Spacer	1	A-89600-A	Cap- Fuel	1	84328-1	Plate- Ignition Coil Mfg	1
48836	Screw- Mach Hex Hd	1		Includes		84608	Module & Core	1
	(5/16 - 18 2A x 3/4)		80481	Valve- Check	1	84772-4B	Tubing- Rubber	1
48893	Ring- Retaining	2	80484	Filter- Fuel Cap	1	A-84864	Lead- Ground	1
48884	Plug	1	89601	Gasket- Fuel Filter Cap	1	83054	Cover- Clutch	1
47327	Ring- Retaining	1	89892	Chain- Bead	1	83231	Plate- Insulating	1
47327	Shim	1	89892	Retainer- Filter Cap	1	86888	Kit- Repair	1

*TOOLS & ACCESSORIES

Z108800

HOMELITE®
CONSTRUCTION & INDUSTRIAL EQUIPMENT
14401 Carowinds Blvd. • P.O. Box 7047 • Charlotte, North Carolina 28217

HOMELITE **TEXTRON**

Homelite Division of Textron Inc.