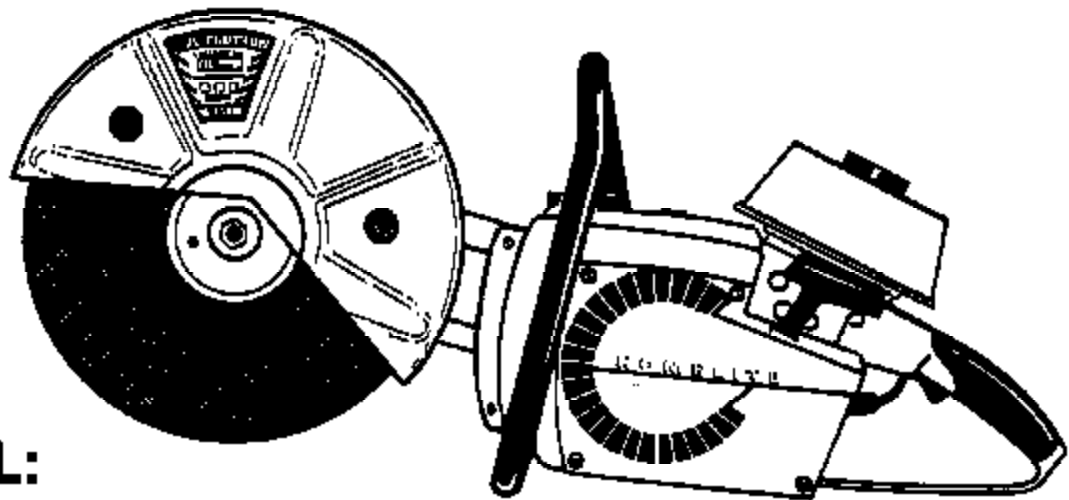


HOMELITE®

Rev. 1
PART NO. 17927
Printed In U.S.A.
Price .35

PARTS LIST



MODEL:

XL-98C

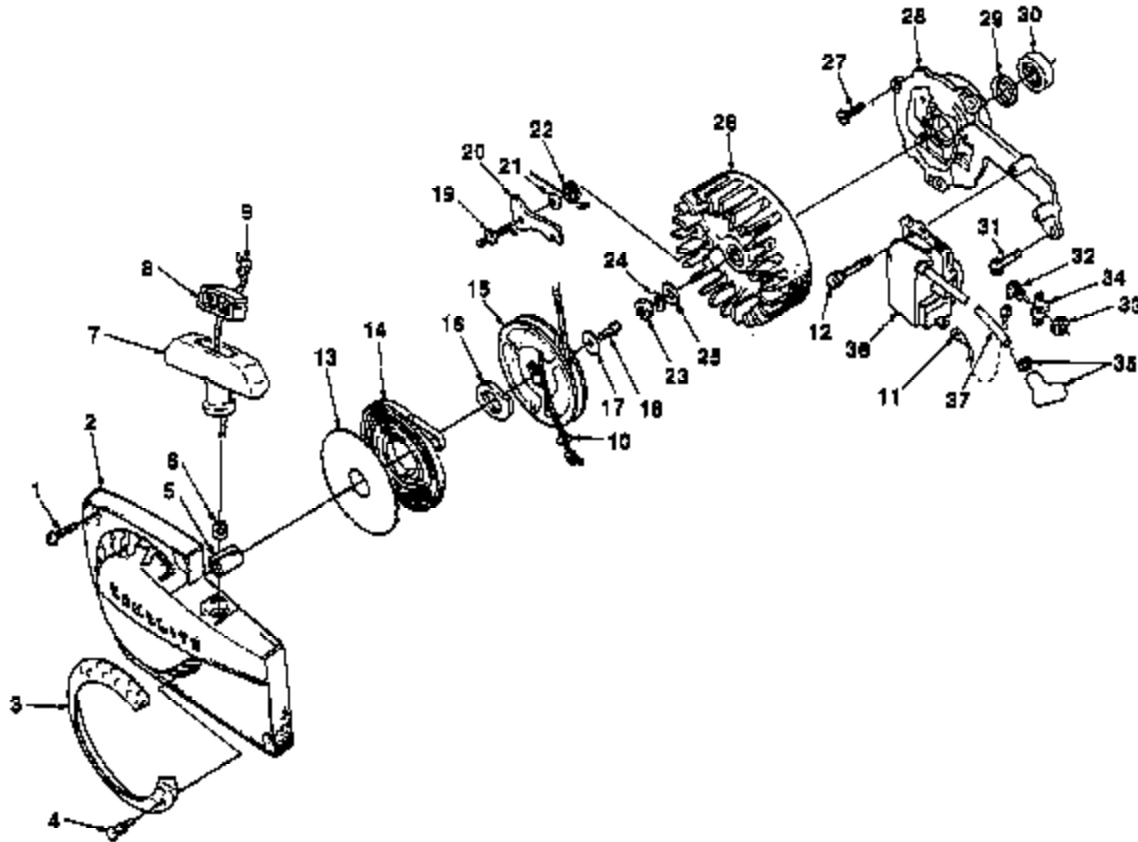
MULTI-PURPOSE SAW

12" — (UT-05015-B)
14" — (UT-05037)

HOMELITE **TEXTRON**

Homelite Division of Textron Inc.

XL-98C FIGURE 1

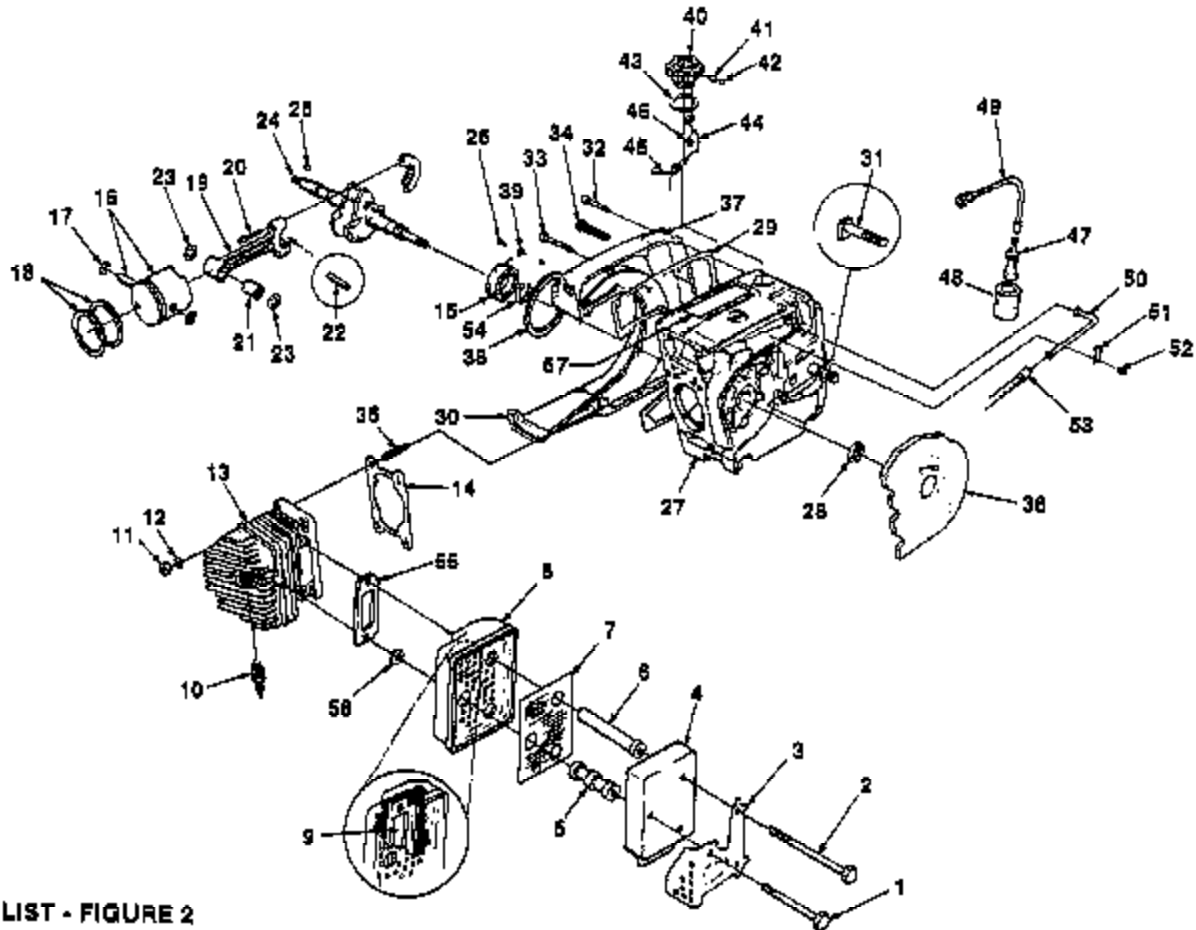


PARTS LIST - FIGURE 1

NO.	DESCRIPTION	PART NO.	QTY.	NO.	DESCRIPTION	PART NO.	QTY.
1	SCREW- Hex hd. 12-24 x 5/8	80676	4	19	STUD- Starter pawl	58757-E	2
2	HOUSING- Starter	A-84504-C	1	20	STARTER PAWL	58758-3	2
	Includes:			21	WASHER- Flat	84115	2
3	KIT- Fan housing screen	A-84421	1	22	SPRING- Starter pawl	55375-2	2
	Includes:			23	NUT- Hex 3/8-24	81124-A	1
4	STUD- Drive #2 x 1/4	87191	4	24	WASHER- Lock 3/8	83102	1
5	BUSHING	84443	1	25	WASHER- Flat 3/8	84010	1
6	BUSHING	87177	1	26	ROTOR- Magneto	88801-A	1
7	GRIP- Starter	A-88862-B	1	27	SCREW- Hex 1/4-20 x 5/8	80048	3
	Includes:			28	PLATE- Back	A-88798-A	1
8	INSERT	70016-A	1		Includes:		
9	ROPE- Starter (48", #5)	A-93875	1	28	SEAL	12292-A	1
	Includes:			30	BEARING- Roller	83195	1
10	WASHER	83882	1	31	SCREW- Sems hex hd. 1/4-20 x 3/4	80218-1	1
11	LEAD- Ground	A-84850	1	32	SWITCH	A-87650-3A	1
12	SCREW- Sems hex hd. 8-32 x 1	88044	2		Includes:		
13	SHIELD	83566	1	33	NUT	72084-A1	1
14	SPRING	83256-A	1	34	PLATE- Indicating	12793-A	1
15	PULLEY & CUP	A-84448	1	35	TERMINAL- Spark plug	A-33055	1
	Includes:			36	MODULE- Ignition	A-86798-A	1
16	LOCK- Spring	84827	1		Includes:		
17	WASHER	85783	1	37	LEAD- High tension	86743	1
18	SCREW- Hex hd. 10-32 x 1/2	80648	1				

2

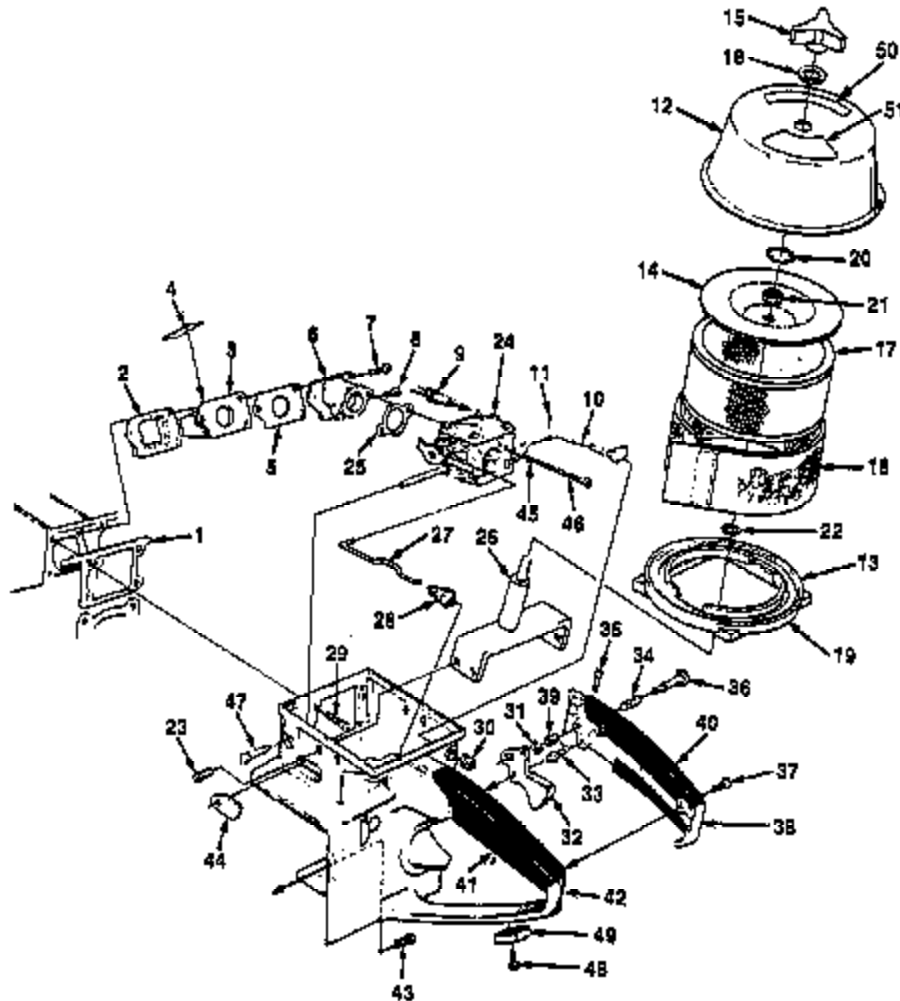
ALWAYS FURNISH MODEL AND SERIAL NUMBER WHEN ORDERING PARTS.



PARTS LIST - FIGURE 2

NO.	DESCRIPTION	PART NO.	QTY.	NO.	DESCRIPTION	PART NO.	QTY.
	MUFFLER KIT (Complete)	A-89854-C	1	27	CRANKCASE	A-49557	1
	Includes:				Includes:		
1	SCREW	95885	1	28	SEAL	12282-A	1
2	SCREW- Hex hd. 1/4-20 x 3	82260	2	29	GASKET- Oil cover	65391	1
3	SHIELD- Muffler	89842	1	30	COVER- Fuel tank	67153-2	1
4	CAP- Muffler	A-59838-1	1	31	BOLT- Guide	67807	2
5	SUPPORT- Short	89844	1	32	SCREW- Flt hd. 8-32 x 5/8	82558	6
6	SUPPORT- Long	89843	1	33	SCREW- Flt hd. 8-32 x 1 3/4	82147	1
7	SCREEN- Spark arrester	A-93900-A	1	34	SCREW- Flt hd. 8-32 x 2 3/16	86725	8
8	BODY- Muffler	A-59838-1	1	35	STUD- Cylinder	55871	4
9	PLATE- Muffler	69839	1	36	SHIELD- Sawdust	A-84715	1
10	SPARK PLUG	93961-S	1	37	LABEL- Warning	69847	1
	SPARK PLUG (Opt.) (Colder plug)	69027-S	1	38	"O" RING	67559	1
11	NUT 1/4-28 x 3/8	86212	4	39	WASHER- Lock	59705	2
12	WASHER- Lock 1/4	83009	4	40	CAP- Fuel	A-89600-A	1
13	CYLINDER	A-42206-B	1		Includes:		
	Includes:			41	VALVE- Check	89451	1
14	GASKET- Cylinder	63778-1	1	42	FILTER	89454	1
15	BEARING- Ball	68190	1	43	GASKET- Fuel cap	89601	1
16	PISTON & PIN ASSEMBLY	A-49314	1	44	CHAIN	89602	1
	Includes:			45	RETAINER- Cap	96535	1
17	PISTON PIN RETAINING RING	64742	2	46	SCREW	82296-A	1
18	PISTON RING	65537	1	47	FILTER- Fuel	A-87700	1
19	ROD- Connecting	A-69858-A	1		Includes:		
	Includes:			48	FILTER ELEMENT	69253-1A	1
20	SCREW- Hex hd. 8-32 x 1/2	89919	2	49	FUEL LINE	86593-A	1
21	BEARING- Needle	69638-A	1	50	CONNECTOR	87080	1
22	BEARING- Needle (set of 2)	A-69058	1	51	CLAMP	85597-1	1
23	WASHER	68010	2	52	SCREW- Pan hd 8-32 x 5/16	80605	1
24	CRANKSHAFT	87188-4	1	53	FUEL LINE	66718-B	1
25	KEY- Woodruff	76078	1	54	RING- Retaining	68318-A	1
26	SCREW- Torx 10-32	70308	2	55	GASKET- Muffler	78098	1
				56	WASHER- Flat 1/4	84020	1
				57	DECAL	46788	1

ALWAYS FURNISH MODEL AND SERIAL NUMBER WHEN ORDERING PARTS.

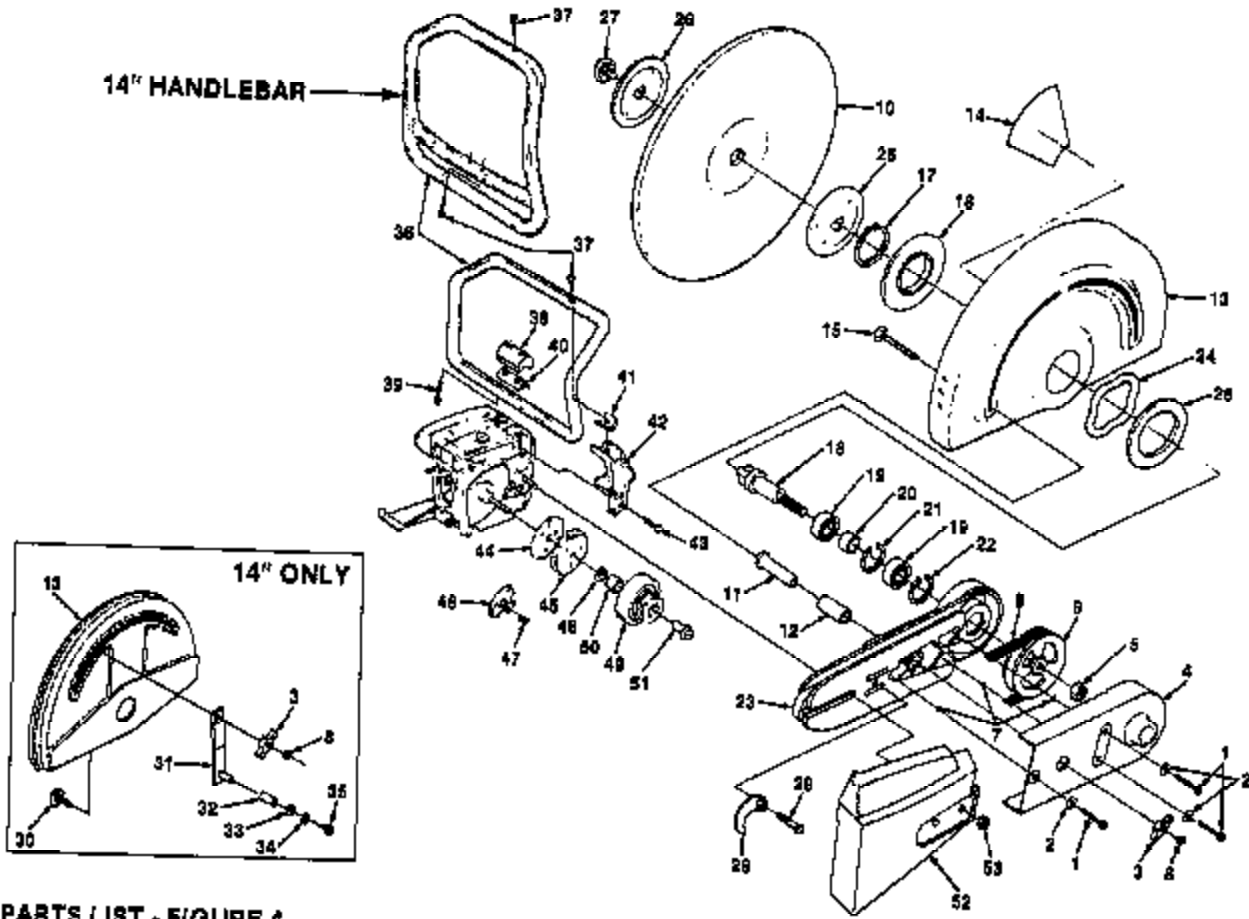


PARTS LIST - FIGURE 3

NO.	DESCRIPTION	PART NO.	QTY.	NO.	DESCRIPTION	PART NO.	QTY.
1	GASKET	63779-D	1	26	BRACKET- Cover	A-49215	1
2	RETAINER- Reed	63370-A	1	27	ROD- Throttle	63268-A	1
3	SEAT- Reed valve	63371-B	1	28	BOOT- Throttle rod	58348	1
4	REED- Valve	63186-A	4	29	SCREW- Hex hd. 12-24 x 5/8	80876	4
5	GASKET	66483	1	30	GROMMET	64862	1
6	SPACER- Carburetor	A-87460-1	1	31	RING	69409	1
7	SCREW- Pan hd. 8-32 x 1 1/4	82174	2	32	TRIGGER	85745	1
8	SCREW- Pan hd. (8-32 x 1")	82173	1	33	PIN	85719	1
9	FUEL LINE	65716-B	1	34	SPRING	58405	1
10	CHOKE ROD	87201-1	1	35	SCREW- 8-32 x 5/8	80023-2	1
11	COTTER PIN	66324	1	36	PIN- Throttle	85671	1
	AIR FILTER KIT	A-49556	1	37	SCREW- Pan hd. 8-32 x 1/2	80500	2
	Includes:			38	COVER- Throttle handle	A-69046	1
12	AIR FILTER COVER	A-49142-1	1		Includes:		
	Includes:			39	BUSHING	69064	1
13	GASKET	60951	1	40	GRIP- Throttle handle	89768	1
14	COVER- Filter Element	49212	1	41	GRIP- Throttle handle	86757	1
15	KNOB- Cover	46076	1	42	HANDLE- Throttle (XL98C-12")	A-47516	1
16	WASHER	88886	1		HANDLE- Throttle (XL98C-14")	A-48690	1
17	FILTER ELEMENT- Air	54820-B	1	43	SCREW- Hex hd. 12-24 x 7/8	80881	1
18	PRE FILTER- Felt	49213	1	44	GROMMET	51144	1
19	RING & GASKET ASSEMBLY	A-50952-A	1	45	WASHER- Lock #10	83046	2
	Includes:			46	SCREW- 10-32 x 1 7/8	62179	2
	GASKET (#13)	60951	1	47	SCREW- Idle adjustment	85389	1
20	RING- Retaining	46072	1	48	SCREW- 10-24 x 1/2	88049	1
21	NUT- Hex 5/16-18	81182	1	49	PAD- Wear	49886	1
22	WASHER- Seal	49435	1	50	DECAL- Instruction	49263	1
23	SCREW- Pan hd. 8-32 x 1/4	80575	4	51	DECAL- Warning	49687	1
24	CARBURETOR	A-42208-B	1				
	Includes:						
25	GASKET	67540	1				

4

ALWAYS FURNISH MODEL AND SERIAL NUMBER WHEN ORDERING PARTS.



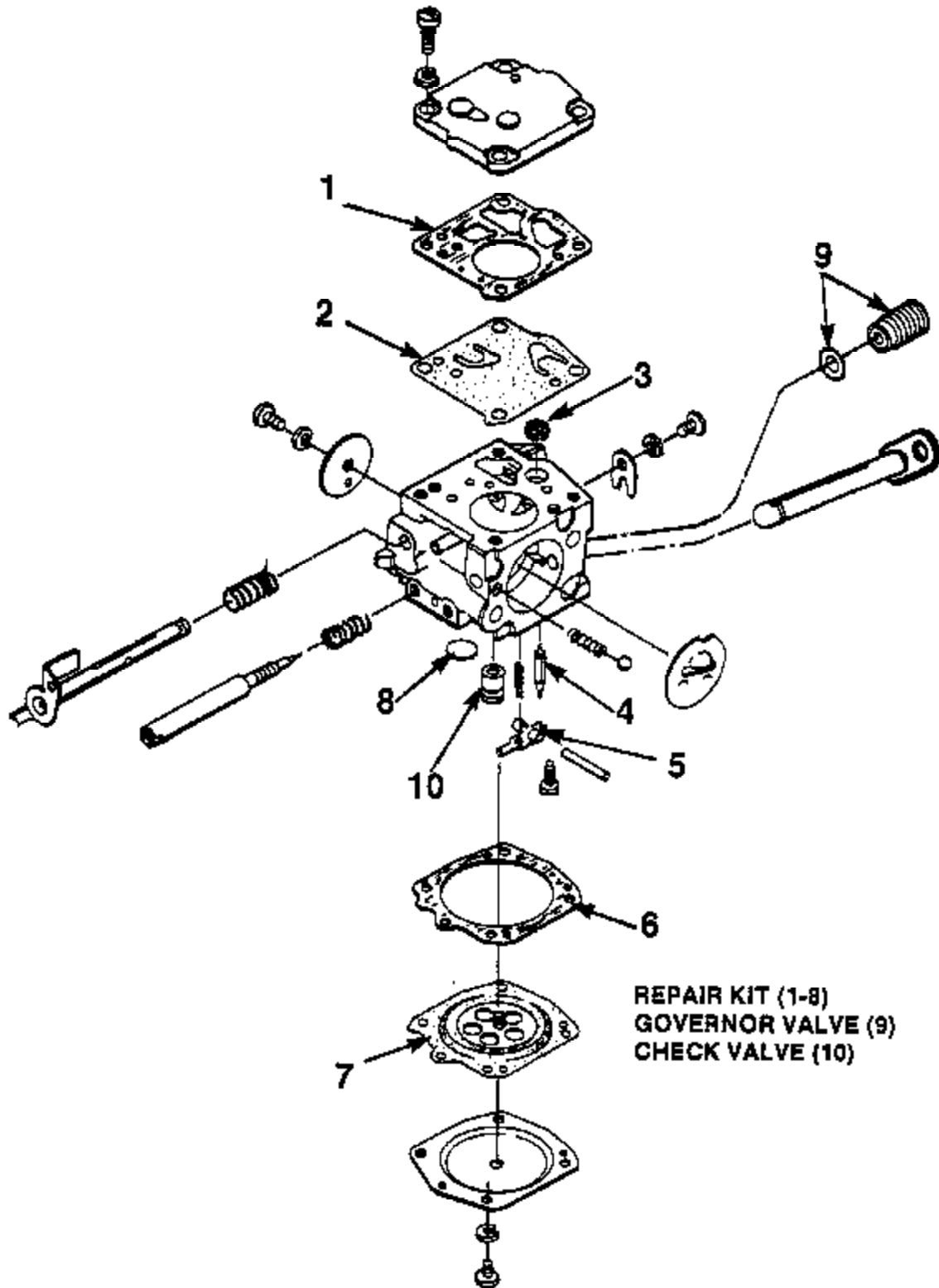
PARTS LIST - FIGURE 4

NO.	DESCRIPTION	PART NO.	QTY.	NO.	DESCRIPTION	PART NO.	QTY.
1	SCREW- Slotted (1/4-20 x 1 1/2)	84143	3	31	ARM- Adjusting (Note 2) (XL98C-14")	A-49789	1
2	WASHER- Flat 1/4	84026	3	32	TUBING- Rubber (XL98C-14")	49553	1
3	KNOB- Handle (Note 2)	JA-33955-0	1	33	WASHER- Flat 5/16 (XL98C-14")	84027	1
4	COVER- Arm	43986-B	1	34	WASHER- Lock 1/4 (XL98C-14")	83009	1
5	NUT- Lock hex 1/2-13	81246	1	35	SCREW- Hex cap 1/4-20 x 6/8 (XL98C-14")	80048	1
6	PULLEY- Drive	43998-1A	1	38	HANDLE BAR (XL98C-12")	A-53573-4A	1
7	"O" RING	48462	3		HANDLE BAR (XL98C-14")	A-49580-1	1
8	NUT- Hex 5/16-18 (Note 2)	JA-44310-6	1	37	SCREW- Nylock 1/4-20 x 1" (XL98C-12")	8042B-1	1
9	BELT- "V" Drive	46058	1		SCREW- Nylock 1/4-20 x 1" (XL98C-14")	8042B-1	3
10	WHEEL- Resinoid (XL98C-12")	64598-B5	1	38	SPACER	50724-2	1
11	WHEEL- Resinoid (XL98C-14")	49559	1	39	SCREW- Nylock 1/4-20 x 1 7/8	82242	2
12	SPACER- Guard adjusting (XL98C-12") (Note 1)	46458-B	1	40	MOUNT- Shock (spacer)	61162	1
13	TUBING- Rubber (XL98C-12")	48465	1	41	MOUNT- Shock (bracket)	61163	1
14	GUARD- Wheel (XL98C-12")	A-43482-1A	1	42	BRACKET- Handle Bar	69829-2	1
15	GUARD- Wheel (XL98C-14")	A-49580	1	43	SCREW- Hex hd. 12-24 x 3/4	80887	2
16	LABEL- Caution	48922	1	44	COVER- Clutch	93828	1
17	BOLT- Step 5/16-18 x 3 1/2 (XL98C-12") (Note 1)	82534	1	45	PLATE- Clutch back	65760-1B	1
18	WASHER- Mounting (XL98C-12")	48000	1	46	SHOE- Clutch	69461	3
19	WASHER- Mounting (XL98C-14")	48000-1	1	47	SPRING- Clutch	67053	3
20	SHAFT- Wheel	48085	1	48	WASHER	68833	1
21	BEARING- Ball	48079-A	1	49	PULLEY- Bearing & Arm	A-49224	1
22	BEARING- Ball	62107-S	2		Includes:		
23	SPACER- Bearing	46067	1	60	BEARING	61151	1
24	RING- Retaining	47207	1	51	RACE- Inner bearing	A-97901	1
25	RING- Retaining	31748	1	52	COVER- Drivcase	63579-5	1
26	ARM- Wheel	A-49558	1	53	NUT- 3/8-16	61088-2	2
27	Includes:						
28	SPRING- Wave	47388	1				
29	SHIM	47387	1				
30	FLANGE- Wheel	43996-1A	1				
	KIT- Screw, Washer & Retaining	A-48783-A	1				
	CAM & ADJUSTER	A-49184	1				
	SCREW- Hex hd. 5/16-18 x 1 1/2	80087	1				
	BOLT- Step (XL98C-14") (Note 2)	82519-A	1				

NOTE 1: (XL98C-12") When replacing the Spacer 46458-A with new Spacer A-46458-B, units prior to S/N HJ0900378, must use new Step Bolt 82534 instead of 82371 Step Bolt.

NOTE 2: (XL98C-14") When replacing A-49534 Adjusting Arm with A-49789 Adjusting Arm, units prior to S/N H10050085, must use Step Bolt 82519-A, Knob JA-33955-0 & Nut JA-44310-6.

ALWAYS FURNISH MODEL AND SERIAL NUMBER WHEN ORDERING PARTS.



XL-98C**ACCESSORIES****WHEELS- Resinoid**

METAL- (12" x 5/32" x 1")	64597-BS
DUTILE- (12" x 5/32" x 1")	68421-AS
CONCRETE- (12" x 5/32" x 1")	64596-BS
CONCRETE- (11 7/8" x 5/32" x 20 mm)	43233-AS
DUTILE- (11 7/8" x 5/32" x 20 mm)	43234-AS
METAL- (11 7/8" x 5/32" x 20 mm)	43235-AS
DUCTILE- (14" x 5/32" x 1")	49560
METAL- (14" x 5/32" x 1")	49561

WHEELS- Diamond

CONCRETE- (12" x 1/8" x 1")	A-49231-A
CONCRETE- (14" x 1/8" x 1")	A-49572

BLADE- Carbide	64595-A
SEALASTIC	24823
PAINT- Red	23475
DOLLY KIT	UT-05032-A
CARRY CASE- w/Insert	A-47390-B
WET CUTTING KIT	A-49649
BLOTTER	24174

TOOLS

SCREW DRIVER	24541
WRENCH- Combination	A-49807
WRENCH- Socket	68651
WRENCH- Adjusting	A-24085
WRENCH- Spanner	A-23934
SHIM- Air gap (black)	24306
BIT- Torx 1/4" shank	24982-01
BIT- Torx 5/16" shank	24982-02
PULLER- Rotor	A-24290
Includes:	
SCREW- Rotor Removal	24301
RING- Retaining	67912