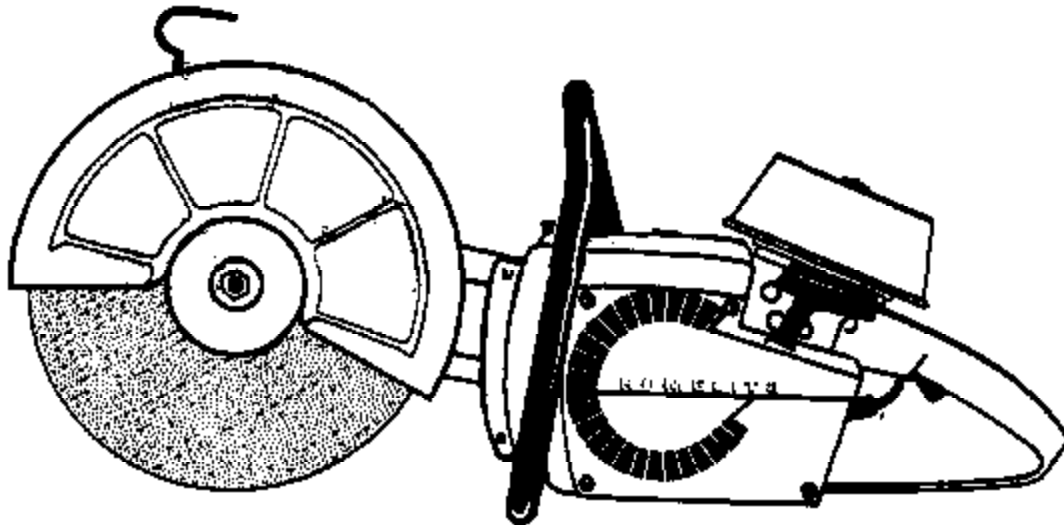


**PART NO. 24760 REV. 3**  
**Printed in U.S.A.**

# PARTS LIST



# XL-98A

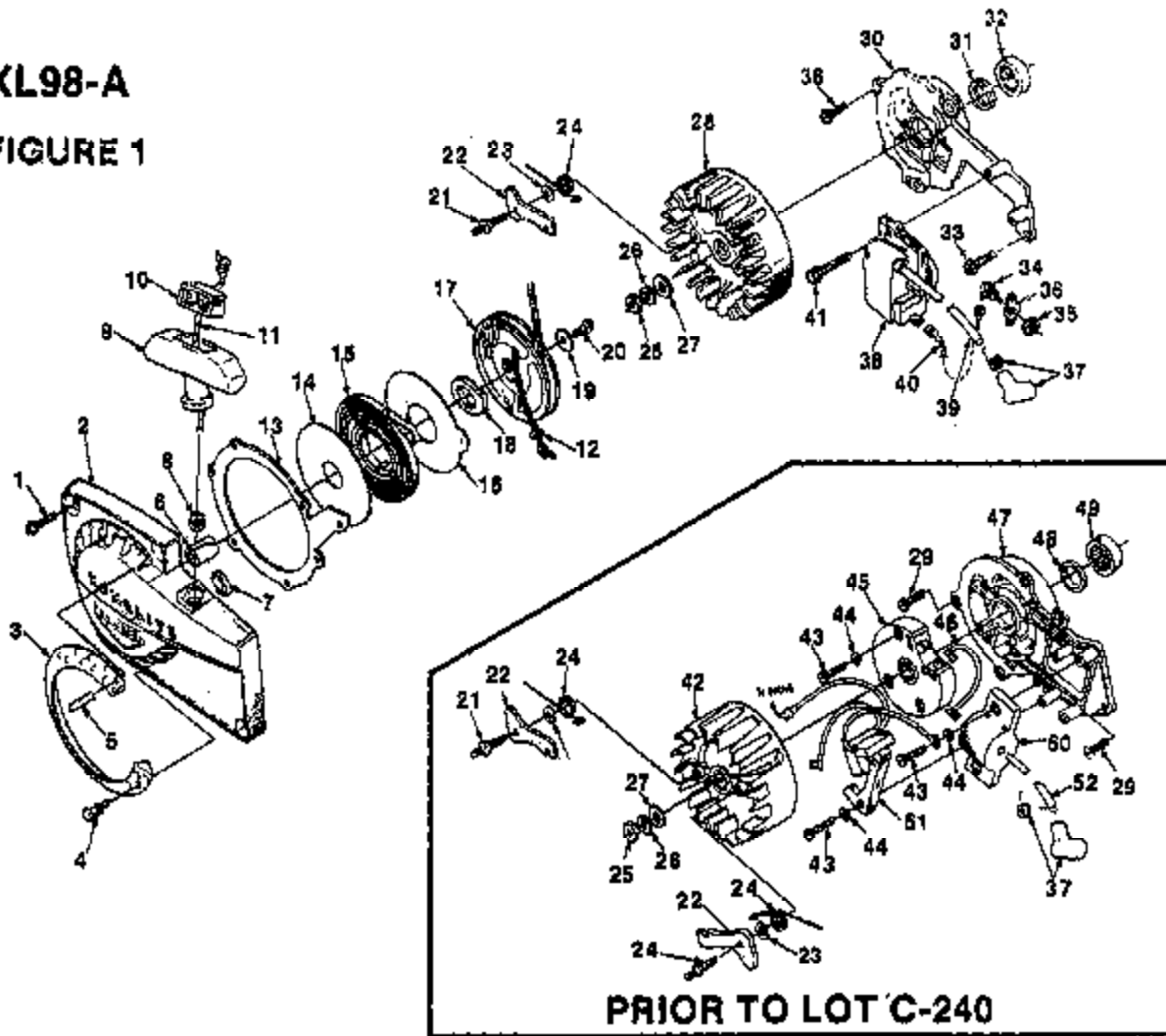
## MULTIPURPOSE SAW

**HOMELITE** **TEXTRON**

Homelite Division of Textron Inc.

# XL98-A

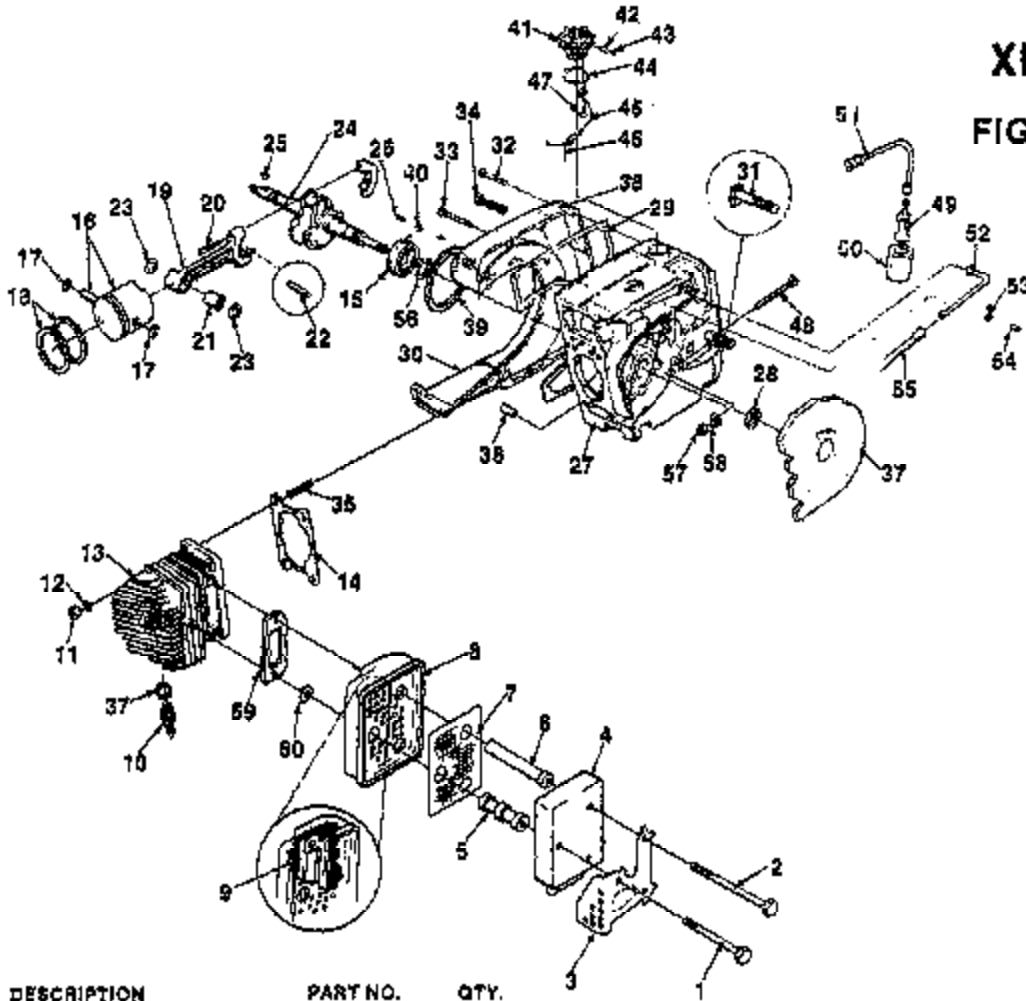
## FIGURE 1



**PRIOR TO LOT C-240**

NO.	DESCRIPTION	PART NO.	QTY.	NO.	DESCRIPTION	PART NO.	QTY.
1	SCREW- Hex hd. 12-24 x 5/8	80876	8	29	SCREW- Hex 1/4-20 x 5/8	80048	3
2	HOUSING- Starter	A-84504-C	1	30	PLATE- Back (After Lot #C-240)	A-98798-A	1
3	KIT- Fan housing screen Includes:	A-64421	1	31	SEAL	12282-A	1
4	STUD- Drive	67191	4	32	BEARING	65185	1
5	FASTENER	64419	8	33	SCREW- Sems hex hd. 1/4-20 x 3/4 (After Lot #C240)	8021B-1	2
6	BUSHING	64443	1	34	SWITCH	A-57650-3A	1
7	BUSHING	65830	1		Includes:		
8	BUSHING	67177	1	35	NUT	72084-A1	1
9	GRIP- Starter	A-69962-B	1	36	PLATE- Indicating	12793-A	1
10	INSERT	7001B-A	1	37	TERMINAL- Spark plug	A-33055	1
11	ROPE- Starter (48", #5) Includes:	A-93875	1	38	MODULE- Ignition (After Lot #C240)	A-98798-A	1
12	WASHER	93862	1		Includes:		
13	RING- Air flow (prior to Lot #7045)	67409	1	39	LEAD- High tension	96743	1
14	SHIELD	63566	1	40	LEAD- Ground (After Lot #C240)	A-84850	1
15	SPRING	63265-A	1	41	SCREW- Sems hex hd. 8-32 x 1 (After Lot #C240)	86044	2
16	SHIELD	63565-A	1	42	ROTOR- Magneto (Prior to Lot #C240)	67165	1
17	PULLEY & GUP Includes:	A-64448	1	43	SCREW- Mach. hd. 8-32 x 3/4 (Prior to Lot #C240)		
18	LOCK- Spring	94827	1	44	WASHER- (Prior to Lot #C240)	8217B	7
19	WASHER	56763	1	45	MODULE- (Prior to Lot #C240)	83022	7
20	SCREW- Hex hd. 10-32 x 1/2	80846	1	46	LEAD- Transformer	67182	1
21	STUD- Starter pawl	58757-E	2	47	PLATE- Back (Prior to Lot #C240)	A-67618-A	1
22	STARTER PAWL	58758	2		Includes:		
23	WASHER- Lock	70901	1	48	SEAL	12282-A	1
24	SPRING	65375-2	2	49	BEARING- Roller	65185	1
25	NUT- Hex 3/8-24	81124	1	50	COIL- Transformer (Prior to Lot #C240)	87184-A	1
26	WASHER- Lock 3/8	85102	1	51	COIL & CORE (Prior to Lot #C240)	67183	1
27	WASHER- Flat 3/8	84010	1	52	LEAD- High tension (Prior to Lot #C240)	67166	1
28	ROTOR- Magneto (After Lot #C-240)	96801	1				

**XL98-A**  
**FIGURE 2**

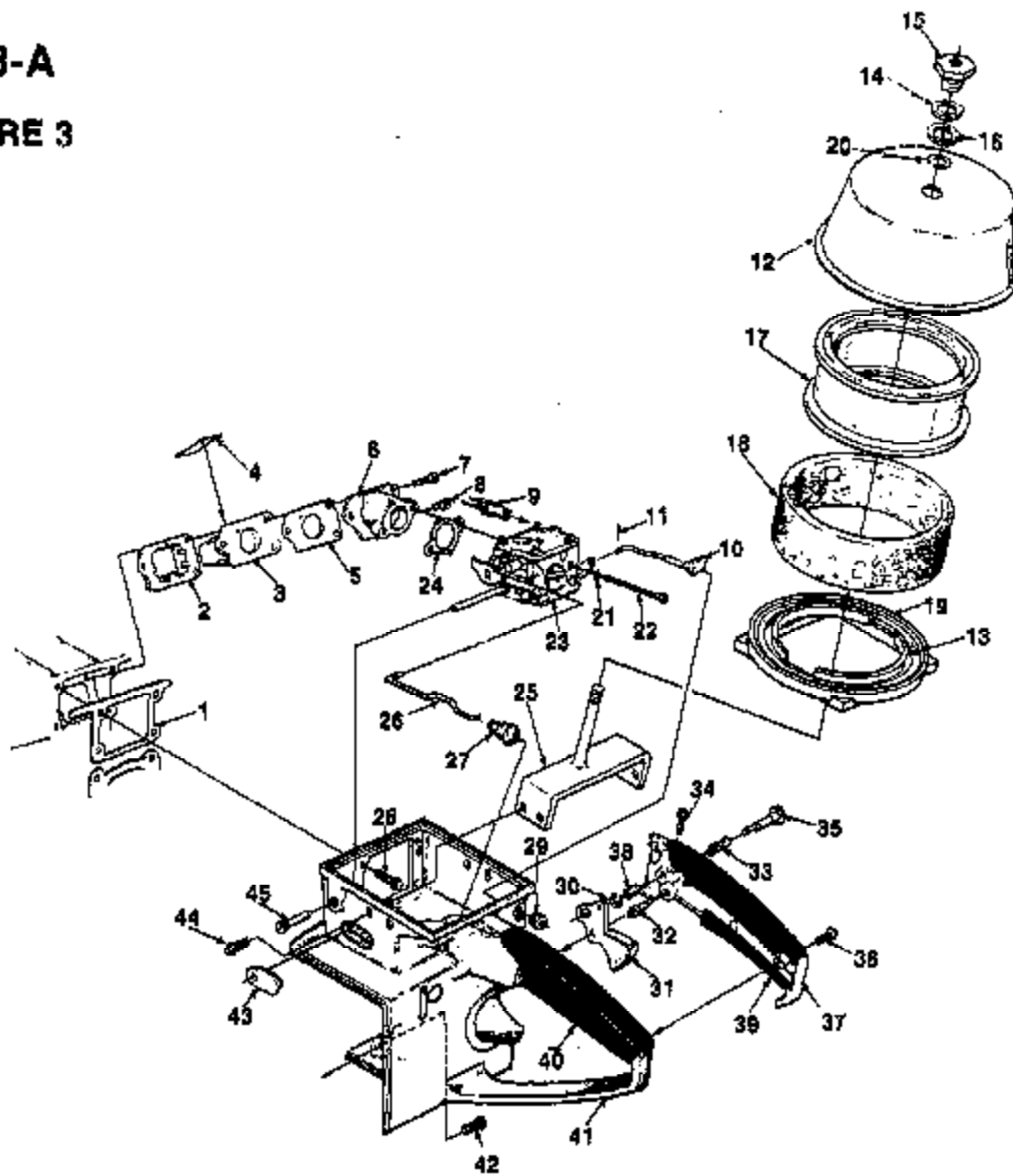


NO.	DESCRIPTION	PART NO.	QTY.	NO.	DESCRIPTION	PART NO.	QTY.
	MUFFLER KIT (Complete)	A-69864-C	1				
	Includes:						
1	SCREW-	95885	1	29	GASKET- Oil cover	65391	1
2	SCREW- Hex hd. 1/4-20 x 3	82280	2	30	COVER- Fuel tank	87153-2	1
3	SHIELD- Muffler	88842	1	31	BOLT	67907	2
4	CAP- Muffler	A-88836-1	1	32	SCREW- Flt hd. 8-32 x 5/8	82355	8
5	SUPPORT- Short	88844	1	33	SCREW- Flt hd. 8-32 x 1 3/4	82147	1
6	SUPPORT- Long	88843	1	34	SCREW- Flt hd. 8-32 x 2 3/16	95725	8
7	SCREEN- Spark arrester	A-88900-A	1	36	STUD- Cylinder	55671	4
8	BODY- Muffler	A-88836-A	1	38	PIN- Dowel	63621	1
9	PLATE- Muffler	88839	1	37	SHIELD- Sawdust	A-64716	1
10	SPARK PLUG (After Lot #C240)	93561-S	1	38	LABEL- Warning	68847	1
	SPARK PLUG (Prior to Lot #C240)	83547-S	1	38	O-RING	67658	1
	SPARK PLUG (Opt.) (Colder plug)	89027-S	1	40	WASHER- Lock	69705	2
11	NUT 1/4-28	88212	4	41	CAP- Fuel	A-69600-A	1
12	WASHER- Lock 1/4	83008	4		Includes:		
13	CYLINDER	A-46807-A	1	42	VALVE- Check	88461	1
	Includes:			43	FILTER	68454	1
14	GASKET- Cylinder	63778-1	1	44	GASKET- Fuel cap	68501	1
15	BEARING	58180-S	1	45	CHAIN	68502	1
16	PISTON & PIN ASSEMBLY	A-67988	1	46	RETAINER- Cap	96635	1
	Includes:			47	SCREW	82266-A	1
17	PISTON PIN RETAINING RING	64742	2	48	SCREW	63367	1
18	PISTON RING	55537	2	48	FILTER- Fuel	A-69823	1
19	ROD- Connecting	A-88658-A	1		Includes:		
	Includes:			50	FILTER ELEMENT	64083	1
20	SCREW	88918	2	51	FUEL LINE	65583-A	1
21	BEARING	88638	1	52	CONNECTOR	67080	1
22	BEARING- Needle (set of 28)	A-89058	1	53	CLAMP	65597-1	1
23	WASHER	88010	2	54	SCREW- Pan hd 8-32 x 5/16	80805	1
24	CRANKSHAFT	87188-4	1	55	FUEL LINE	66718-B	1
25	KEY	75078	1	56	RING- Retaining	66318-A	1
26	SCREW- Torx 10-32	70306	2	57	NUT- Hex 1/4-20	81204	1
27	CRANKCASE	A-53825	1	58	ADJUSTING PIN	98039	1
	Includes:			59	GASKET- Muffler	78096	1
28	SEAL	12282-A	1	60	WASHER	84020	1

ALWAYS FURNISH MODEL AND SERIAL NUMBER WHEN ORDERING PARTS.

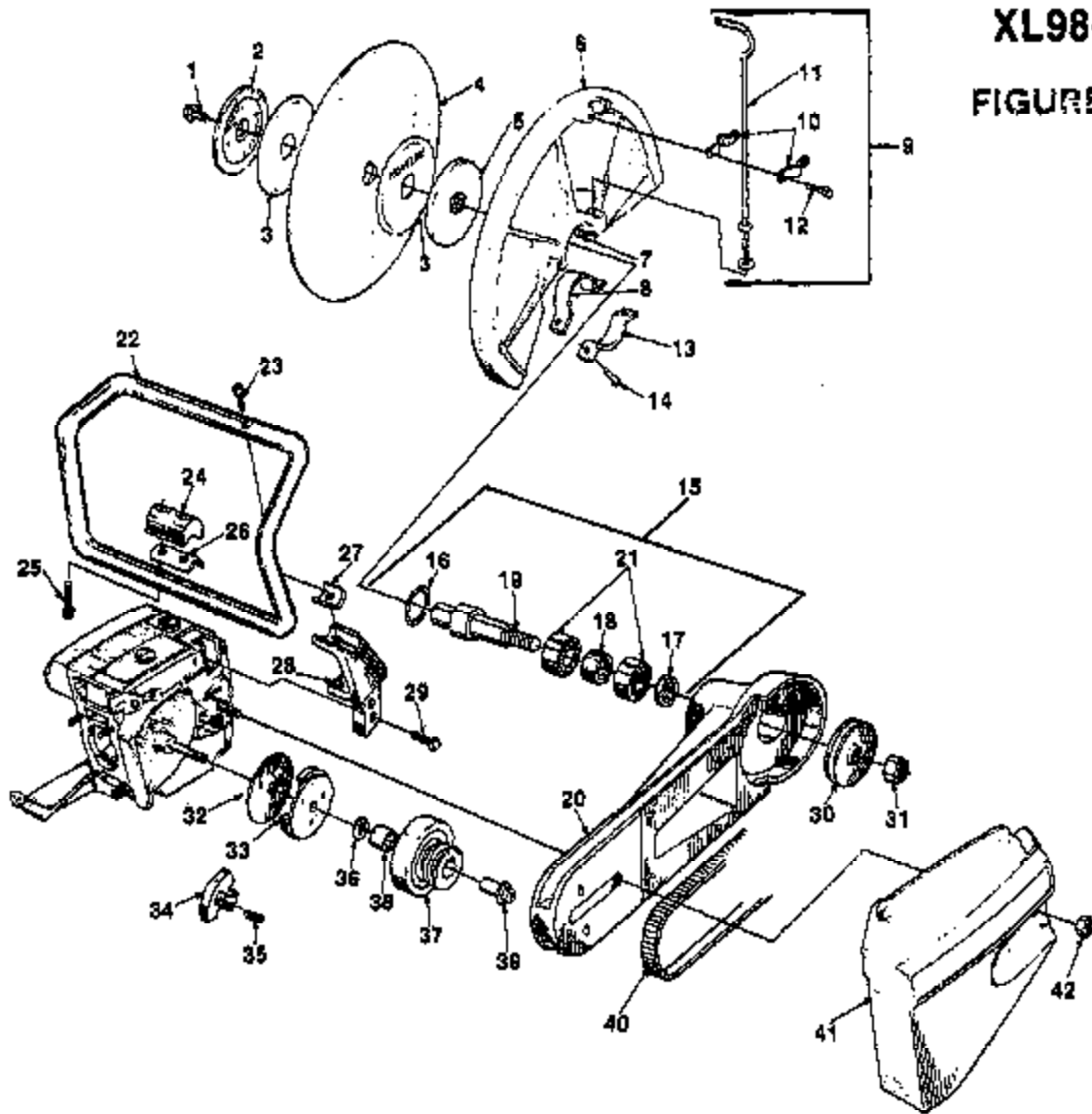
# XL98-A

## FIGURE 3



NO.	DESCRIPTION	PART NO.	QTY.	NO.	DESCRIPTION	PART NO.	QTY.
1	GASKET	63778-C	1	23	CARBURETOR	A-42208-A	1
2	RETAINER- Reed	63370-A	1		(includes:		
3	SEAT- Reed valve	63371-B	1		GASKET	67540	1
4	REED- Valve	63188-A	4	25	BRACKET- Cover	A-50855-1A	1
5	GASKET	65483	1	26	ROD- Throttle	63286-A	1
6	SPACER- Carburetor	A-67480-1	1	27	BOOT- Throttle rod	58348	1
7	SCREW- Pan hd. 8-32 x 1 1/4	62174	2	28	SCREW- Hex hd. 12-24 x 5/8	80676	4
8	SCREW- Pan hd. 8-32 x 1	62173	1	29	GROMMET	64862	1
9	FUEL LINE	65718-B	1	30	RING	58409	1
10	CHOKE ROD	67201-1	1	31	TRIGGER	65745	1
11	COTTER PIN	86324	1	32	PIN	65718	1
12	AIR FILTER COVER	A-50857-A	1	33	SPRING	58405	1
	Includes:			34	SCREW- 8-32 x 5/8	80823-2	1
13	GASKET	50851	1	35	PIN- Throttle	95671	1
14	WASHER	54536	1	36	SCREW- Pan hd. 8-32 x 1/2	80580	2
15	NUT	A-67638-1	1	37	COVER- Throttle handle	A-89045	1
16	WASHER	50860	1		Includes:		
17	FILTER ELEMENT- Air	54520-B	1	38	BUSHING	69064	1
18	FILTER ELEMENT- Air (Foam)	51173	1	39	GRIP- Throttle handle cover	66766	1
19	RING & GASKET ASSEMBLY	A-60862	1	40	GRIP- Throttle handle	66767	1
	Includes:			41	HANDLE- Throttle	A-47515	1
	GASKET (see item #13)	50861	1	42	SCREW- Hex hd. 12-24 x 7/8	80891	1
20	RING- Retaining	58319-A	1	43	GROMMET	61144	1
21	WASHER- Lock	83048	2	44	SCREW- Pan hd. 8-32 x 1/4	80575	4
22	SCREW- 10-32 x 1 7/8	82179	2	45	SCREW	63369	1

**XL98-A**  
**FIGURE 4**



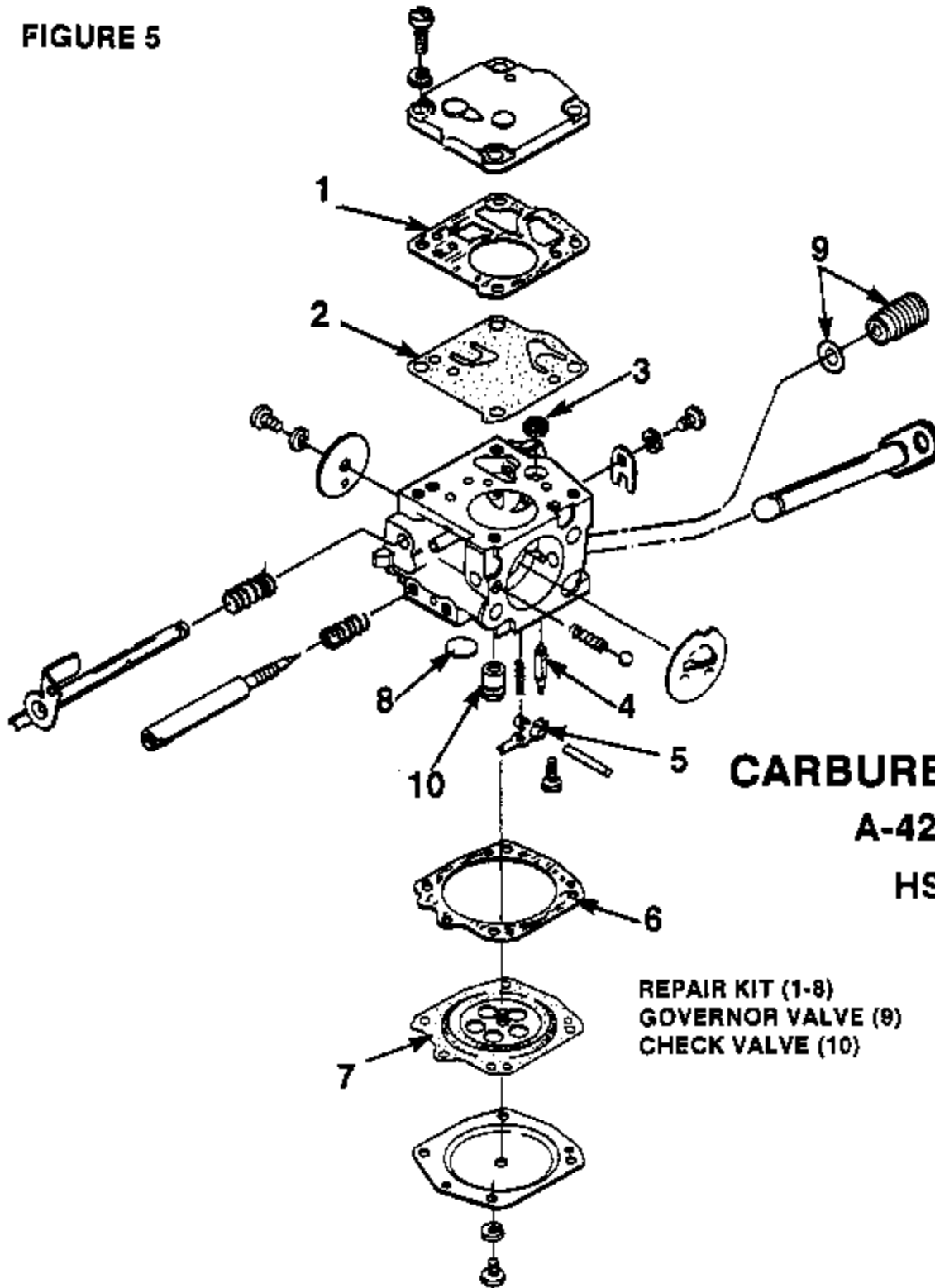
NO.	DESCRIPTION	PART NO.	QTY.	NO.	DESCRIPTION	PART NO.	QTY.
1	BOLT- Blade	59224	1	21	BEARING- Ball	63107	2
2	WASHER- Outer	69970-2A	1	22	HANDLE BAR	A-53573-4A	1
3	SPACER- Blotter	24174	2	23	SCREW- Nylock 1/4-20 x 1	60426-1	1
4	WHEEL- Resinoid (Durable) (opt.)	63421-AS	1	24	SPACER	60724-2	1
	WHEEL- Resinoid (Metal) (opt.)	64597-B5	1	25	SCREW- Nylock 1/4-20 x 1 7/8	62242	2
	WHEEL- Resinoid (Masonry) (Std.)	64598-B5	1	26	MOUNT- Shock	51162	1
	BLADE- Saw (carbide tip) (opt.)	64505-A	1	27	MOUNT- Shock	51183	1
5	WASHER- Inner	69971-2	1	28	BRACKET- Handle bar	69829-2	1
6	BLADE GUARD & SLEEVE	A-51251-B	1	29	SCREW- Hex hd. 12-24 x 3/4	60867	2
	Includes:			30	PULLEY- Driven	69827-1	1
7	PIN- Splrol	43268	1	31	NUT- Stop 7/16-14	61281	1
8	SLEEVE- Blade guard	51188-2	1	32	COVER- Clutch	63628	1
	LABEL- Caution (not shown)	48922	1	33	PLATE- Clutch back	65760-1B	1
8	HOOK BOLT & CLAMP ASSEMBLY	A-65564	1	34	SHOE- Clutch	69461	3
	Includes:			35	SPRING- Clutch	67053	3
10	CLAMP	64383-1	2	36	WASHER	58833	1
11	BOLT- Hook	A-65592-1	1	37	PULLEY- Bearing & Arm	A-67893	1
12	SCREW- 1/4-20 x 1/2	60681-3	2		Includes:		
13	CLAMP- Blade guard	64651-1	1	38	BEARING	51181	1
14	SCREW- 1/4-20 x 13/16	60573	1	39	RACE- (inner bearing)	A-67901	1
15	BLADE ARM KIT	A-43227	1	40	BELT- Drive	64498	1
	Includes:			41	COVER- Drivecase	53579-2	1
18	RING- Retaining	28527	1	42	NUT- 3/8-16	61089-2	2
17	SPACER- Pulley	48208	1				
18	SPACER- Inner	48210	1				
19	SHAFT- Blade	43211	1				
20	ARM- Blade (see note 1)	43226-2	1				

NOTE 1: For units prior to S/N 53517140 use blade arm kit A-43227 for conversion.

ALWAYS FURNISH MODEL AND SERIAL NUMBER WHEN ORDERING PARTS.

**XL98-A**

**FIGURE 5**



**CARBURETOR**  
**A-42208-A**  
**HS-135A**

- |                    |         |
|--------------------|---------|
| REPAIR KIT (1-8)   | 95698   |
| GOVERNOR VALVE (9) | A-42209 |
| CHECK VALVE (10)   | A-51348 |

**XL98-A****ACCESSORIES & TOOLS**

<b>JACK SCREW</b>	<b>A-24570</b>	<b>SLEEVE- Bearing &amp; Shaft installation</b>	<b>23138-2</b>
<b>BIT- Driver torx (.250 shank)</b>	<b>24982-01</b>	<b>BEARING- Installation (2)</b>	<b>23420</b>
<b>BIT- Driver torx (.312 shank)</b>	<b>24982-02</b>	<b>WRENCH- Hex (2)</b>	<b>23528</b>
<b>KIT- Wet cutting</b>	<b>A-60561</b>	<b>SLEEVE- Protecting</b>	<b>23759</b>
<b>ROPE- Startling (250 ft.) #5</b>	<b>57084-1</b>	<b>ANVIL</b>	<b>23846-1</b>
<b>SPARK ARRESTOR (Do not use with A-69864-C)</b>	<b>A-63540-D</b>	<b>SPANNER- Wrench</b>	<b>A-23934</b>
<b>KIT- Emergency</b>	<b>A-47306</b>	<b>PLUG- Bearing Installation</b>	<b>23955</b>
<b>includes:</b>		<b>PLUG- Bearing &amp; Seal Installation</b>	<b>23956</b>
<b>OPERATOR'S KIT</b>	<b>A-24110-1C</b>	<b>PLUG- Seal installation</b>	<b>23957</b>
<b>GOGGLES- Safety</b>	<b>64598</b>	<b>JACK SCREW- Bearing removal</b>	<b>A-23962</b>
<b>CAN- Fuel safety</b>	<b>64599-A</b>	<b>ANVIL- Bearing Installation</b>	<b>23968</b>
<b>SEALANT</b>	<b>24829</b>	<b>SLEEVE- Seal installation</b>	<b>23972</b>
<b>WRENCH- Socket</b>	<b>68851</b>	<b>PLATE- Crankshaft aligning</b>	<b>24008-1</b>
<b>WRENCH- Blade removal</b>	<b>A-24085-A</b>	<b>PULLER- Magneto</b>	<b>A-24290</b>
<b>SCREW DRIVERR</b>	<b>24541</b>	<b>PLUG- Seal installation</b>	<b>24302</b>
<b>COLLAR- Bearing Installation</b>	<b>22820-3</b>	<b>SHIM- Plastic</b>	<b>24306</b>
<b>PLIERS- Snap ring</b>	<b>22828</b>		
<b>CARRYCASE W/INSERT</b>	<b>A-47390-B</b>		