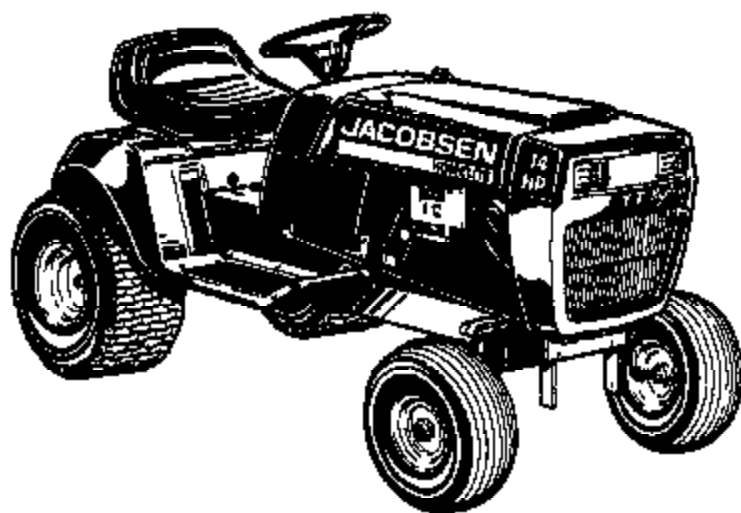


PARTS LIST

YT

HYDRO

TRACTORS



UT-33017
YT-15
UT-33019
YT-16
UT-33015
YT-18
UT-33018

JACOBSEN®
HOMELITE



WARNING

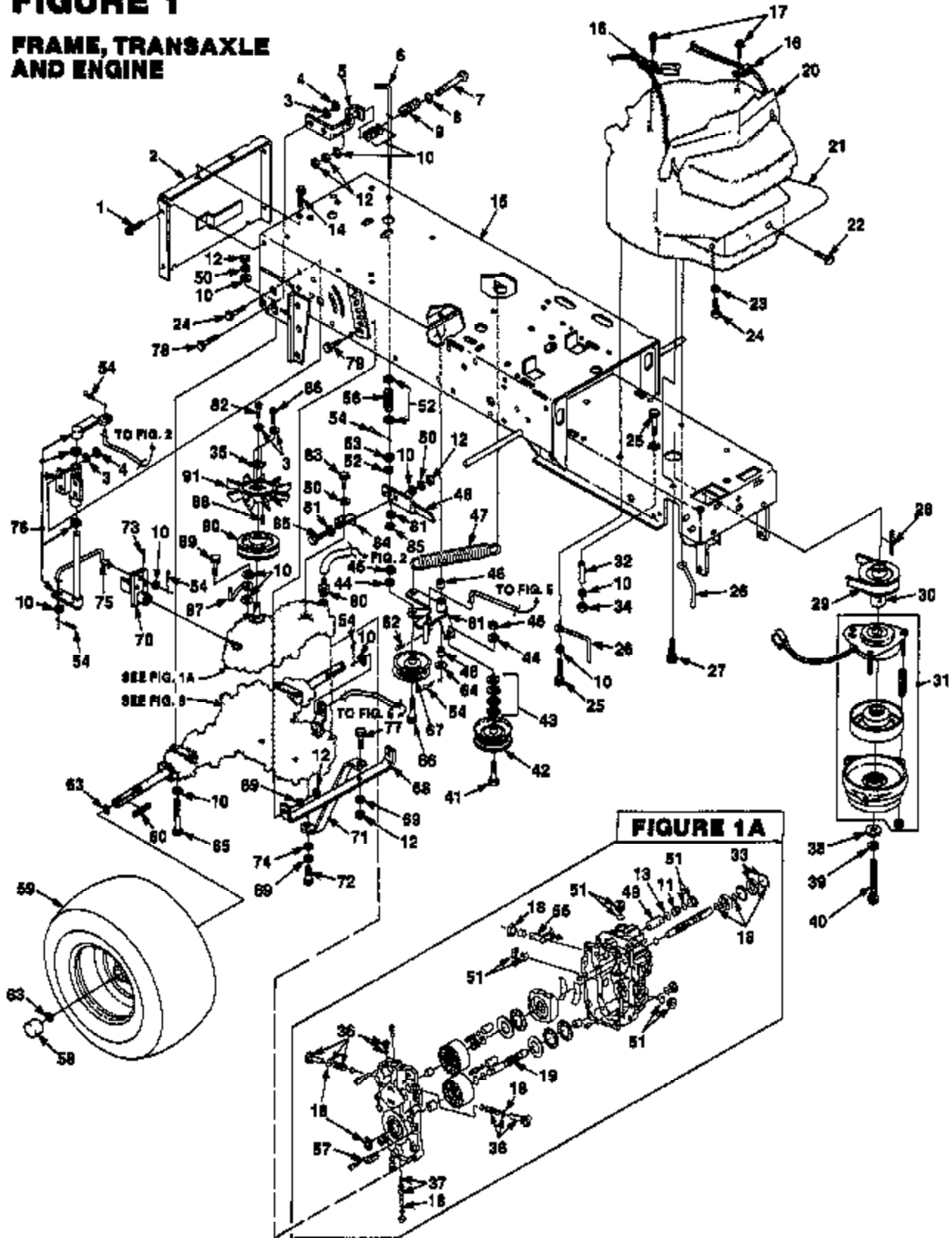
IF INCORRECTLY USED THIS MACHINE CAN CAUSE SEVERE INJURY. THOSE WHO USE AND MAINTAIN THE MACHINE SHOULD BE TRAINED IN ITS PROPER USE, WARNED OF ITS DANGERS, AND SHOULD READ THE ENTIRE MANUAL BEFORE ATTEMPTING TO SET UP, OPERATE, ADJUST OR SERVICE THE MACHINE.

PRINTED IN U.S.A.
Price 35¢

PART NO. JA-99398-3

FIGURE 1

FRAME, TRANSAXLE AND ENGINE



PARTS LIST- FIGURE 1

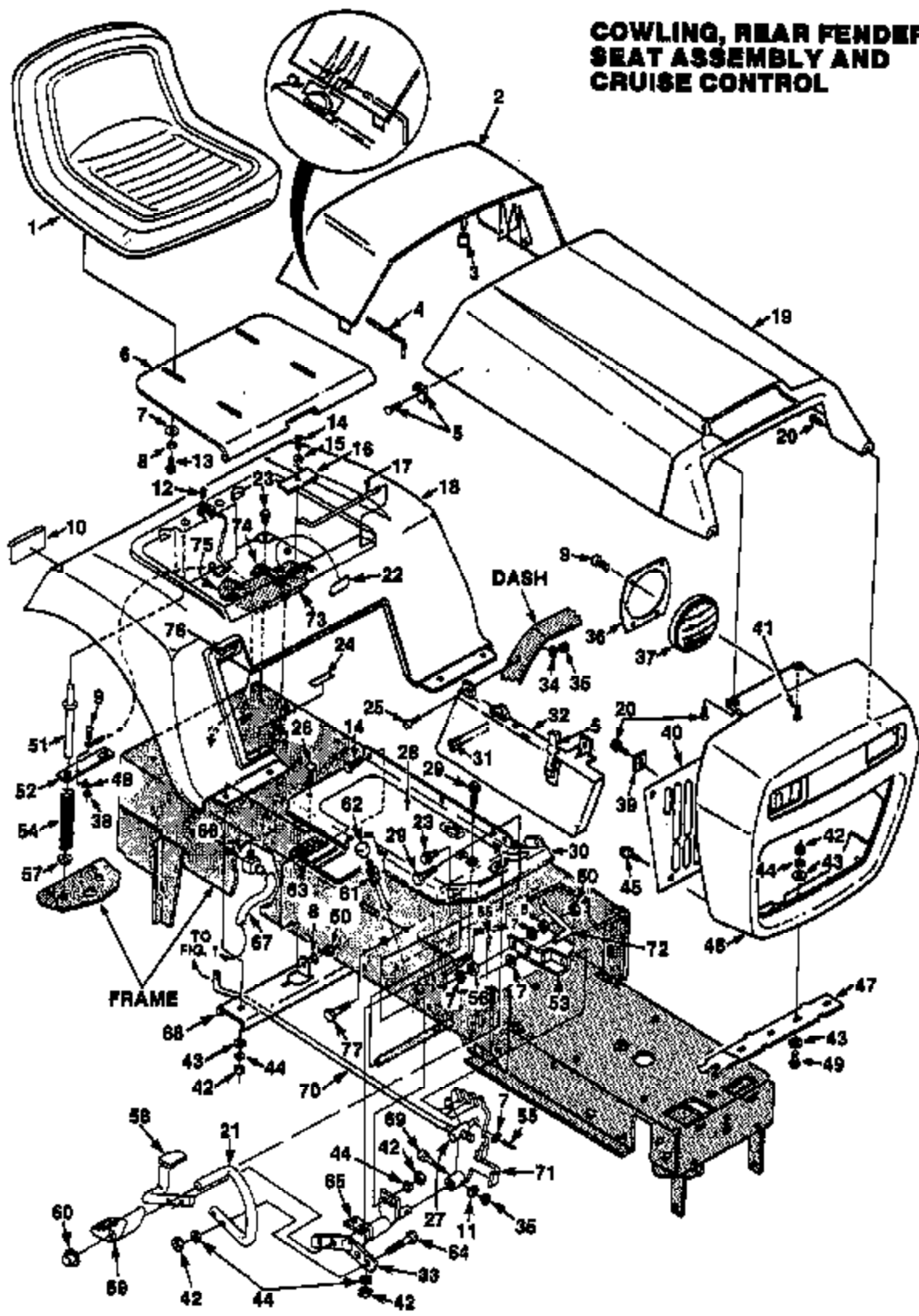
NO.	PART NO.	QTY.	DESCRIPTION	NO.	PART NO.	QTY.	DESCRIPTION
1	JA-40840-6	4	SCREW- (1/4-14 x 1")	47	JA-37808-8	1	SPRING- Extension
2	JA-89259-0	1	BRACKET- Hitch	48	JA-99325-4	1	LINK- Dump
3	JA-44612-6	6	WASHER- Lock (1/4")	49	JA-99457-5	1	FILTER
4	JA-44310-2	6	NUT- Hex (1/4-20)	50	JA-44613-4	2	WASHER- Lock (5/16")
5	JA-99382-6	2	LIMITER- Bracket	51	JA-99457-2	1	FLUG
6	JA-99325-9	1	ROD- Dump	52	JA-46302-3	2	WASHER- Flat (1/4")
7	JA-99987-9	2	BOLT- Rd.Hd.Sq. Neck (1/4-20 x 4 1/2")	53	JA-44470-8	8	NUT- Lock (1/4-20)
8	JA-45301-3	2	WASHER (7/16")	54	JA-48001-4	9	PIN- Cotter (3/32-3/4")
9	JA-99388-1	2	SPRING- Compression	55	JA-99458-8	1	UNION ARM
10	JA-45300-9	20	WASHER- Flat (5/16")	56	JA-31634-4	2	SPRING
11	JA-99457-3	1	SPRING (Filter)	57	JA-99458-9	1	NAME PLATE
12	JA-44310-6	8	NUT- Hex (5/16-18)	58	JA-99328-6	2	CAP- Rear Hub
13	JA-99457-4	1	WASHER (Filter)	59	JA-99315-7	2	REAR WHEEL ASSY
14	JA-40688-5	2	SCREW- (1/4-20 x 9/16")	60	JA-99328-4	2	KEY- (1/4 x 2.50)
15	JA-99434-1	1	FRAME	61	JA-14219-0	1	BEARING ASSY.
16	JA-99491-0	2	CLAMP	62	JA-48004-8	1	PIN
17	JA-40670-4	2	SCREW- Hex (#10-18 x 1/2)	63	JA-45803-6	4	RING- Snap
18	JA-99458-5	1	OVERHAUL- Seal Kit	64	JA-46301-7	2	WASHER- Flat (1/2")
19	JA-99457-7	1	SHAFT- Motor	65	JA-40020-2	4	SCREW- (5/16 x 3")
20	JA-99327-2	1	SHIELD (Note 1)	66	JA-40028-8	3	SCREW- (3/8-18 x 1 3/4")
21	JA-99327-5	1	BULKHEAD (Note 1)	67	JA-99822-2	1	PULLEY
22	JA-37597-8	2	BOLT- (1/4-14 x .44) (Note 1)	68	JA-99829-6	1	REINFORCEMENT
23	JA-44813-0	2	WASHER- Lock (1/4-20) (Note 1)	69	JA-44813-6	2	WASHER- Lock (5/16")
24	JA-40010-6	1	SCREW- (1/4-20 x 5/8") (YT-15)	70	JA-99321-7	1	ARM & LUG
25	JA-40010-6	2	SCREW- (1/4-20 x 5/8") (YT-14, 16 & 18)	71	JA-99326-7	1	BRACKET- Rotation Control
26	JA-40019-9	2	SCREW- (5/16-18 x 1/4")	72	JA-40887-0	1	SCREW- (5/16-18 x .88)
27	JA-99224-4	2	GUIDE- Front Belt	73	JA-43200-5	1	SCREW- Set (1/4-20 x 1/2")
28	JA-40019-4	2	SCREW- (5/16-18 x 1 3/4")	74	JA-48200-8	3	WASHER- Flat (5/16")
29	JA-30699-8	2	KEY	75	JA-99307-2	1	ROD
30	JA-99284-7	1	BELT	76	JA-99433-3	1	PIVOT- Bracket & Arm
31	JA-99107-1	1	PULLEY- Drive	77	JA-40018-8	3	HEX BOLT- (5/16-18 x 1")
32	JA-99316-4	1	CLUTCH- Brake	78	JA-40010-6	3	SCREW- (1/4-20 x 3/4")
33	JA-35057-7	1	SPACER	79	JA-40018-4	4	SCREW- (5/16-18 x 3/4")
34	JA-99458-9	1	SEAL KIT	80	JA-99318-1	1	CONNECTOR
35	JA-44471-6	2	NUT- Lock (5/16-18)	81	JA-99317-1	1	SLEEVE
36	JA-99367-5	1	PLATE- Retainer	82	JA-99367-7	1	SCREW- (m6 x 1 x 12mm)
37	JA-99459-1	1	CHECK VALVE KIT	83	88120	1	SCREW- (m8 x 1.25 x 50mm)
38	JA-99459-3	1	BYPASS VALVE KIT	84	JA-99325-3	1	BRACKET- Pivot
39	JA-99012-6	1	CLUTCH- Retainer	85	JA-40018-6	6	SCREW- (5/16-18 x 7/8")
40	JA-44814-8	1	WASHER- Lock (7/16")	86	JA-40690-5	2	SCREW- (10-24 x 5/8")
41	JA-40035-5	1	SCREW- (7/16-20 x 3)	87	JA-99368-7	1	GUIDE BELT
42	JA-40027-0	1	SCREW- (3/8-18 x 2)	88	JA-99321-6	1	KEY
43	JA-39989-0	1	IDLER- Inside	89	JA-99387-6	1	SCREW (m8 x 1 1/4 x 120mm)
44	JA-45301-1	7	WASHER- Flat (3/8")	90	JA-99283-4	1	PULLEY
45	JA-44814-2	8	WASHER- Lock (3/8")	91	JA-99284-6	1	FAN
46	JA-44311-0	8	NUT- Hex (3/8-16)				
48	JA-32813-3	1	BUSHING				

NOTE 1: Not used on YT-15 units.

ALWAYS FURNISH MODEL AND SERIAL NUMBERS WHEN ORDERING PARTS.

FIGURE 2

COWLING, REAR FENDER, SEAT ASSEMBLY AND CRUISE CONTROL

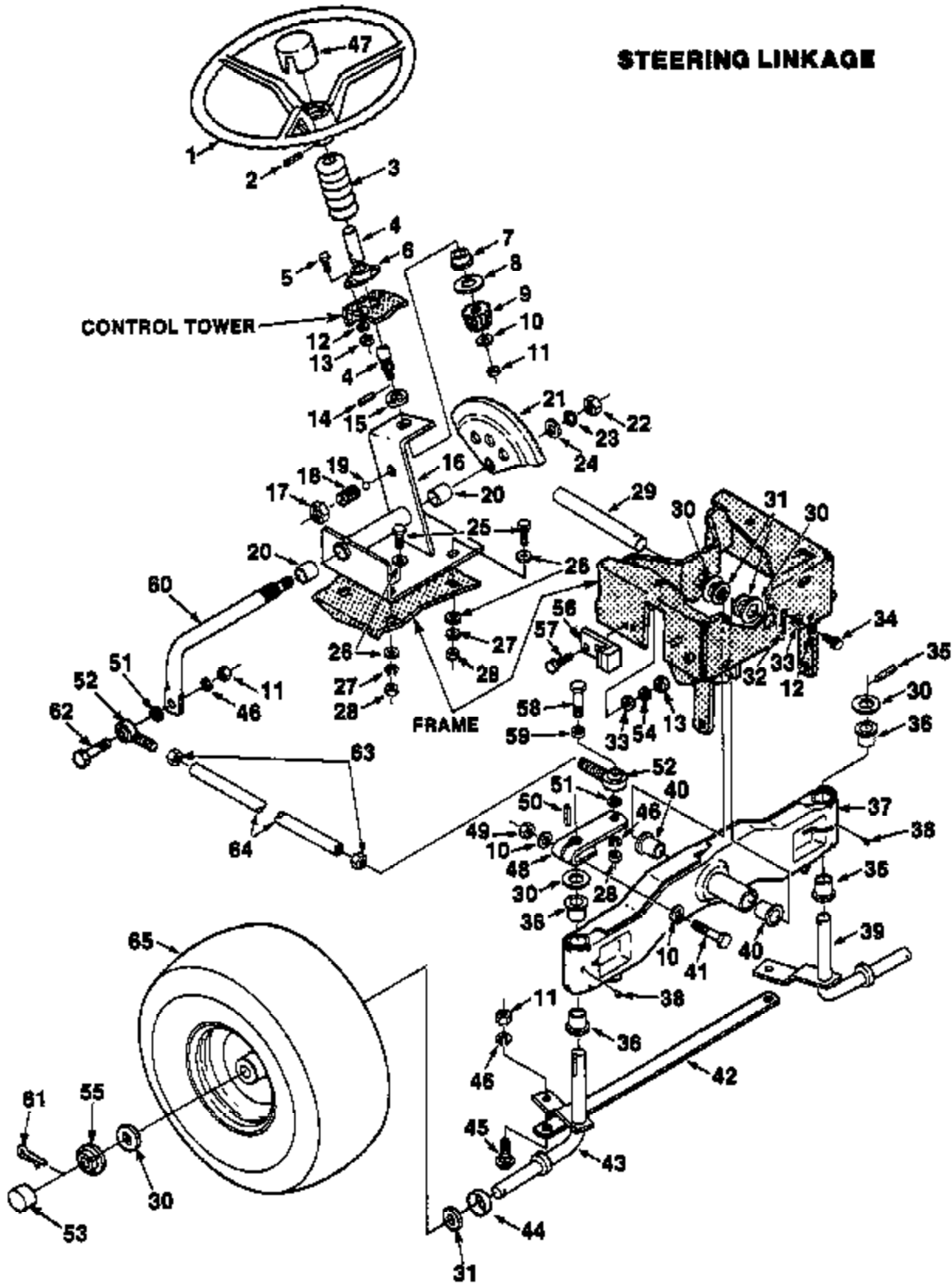


PARTS LIST- FIGURE 2

NO.	PART NO.	QTY.	DESCRIPTION	NO.	PART NO.	QTY.	DESCRIPTION
1	JA-99370-6	1	SEAT	40	JA-99089-7	1	GRILLE
2	JA-99216-3	1	PANEL- Hood	41	JA-40840-4	2	SCREW- (1/4-14 x 3/4") (YT-15)
3	JA-99222-7	1	BUMPER- Rubber		JA-40840-4	2	SCREW- (1/4-14 x 3/4") (YT-14, 16 & 18)
4	JA-99217-5	2	PIN- Attachment	42	JA-44310-2	16	NUT- Hex (1/4-20)
5	JA-99029-0	2	LATCH	43	JA-45302-3	18	WASHER- Plain (1/4") (YT-15)
6	JA-99124-1	1	PAN- Seat		JA-45302-3	18	WASHER- Plain (1/4") (YT-14, 16 & 18)
7	JA-45300-6	8	WASHER- Flat (5/16")	44	JA-44612-8	16	WASHER- Lock (1/4")
8	JA-44613-6	5	WASHER- Lock 5/16 Hvy.	45	JA-40840-5	2	SCREW- (1/4-14 x 1/2")
9	JA-40390-8	11	SCREW- (10-24 x 3/8")	46	JA-99128-1	1	COWLING
10	JA-33575-7	2	REFLECTOR	47	JA-39290-0	1	GRILLE HINGE
11	JA-45606-3	4	WASHER- Thrust	48	JA-44611-6	1	LOCKWASHER (#10)
12	JA-40925-4	1	SCREW- (#10 x 1/2")	49	JA-40011-0	5	SCREW- (1/4-20 x 7/8")
13	JA-40016-2	6	SCREW- (5/16-18 x 5/8")	50	JA-44310-6	3	NUT- Hex (5/16-18)
14	JA-40010-8	3	SCREW- (1/4-20 x 3/4")	51	JA-37611-7	2	PIN- Seat Support
15	JA-44613-0	1	WASHER- Lock (1/4")	52	JA-37611-6	1	CONTACT- Interlock
16	JA-37612-0	1	BRACKET- Rod. Ret.	53	JA-99320-8	1	CONTROL ARM
17	JA-37611-6	2	ROD- Hinge	54	JA-37611-6	2	SPRING- Compression
18	JA-99119-1	1	FENDER	55	JA-49001-4	4	PIN- Cotter (3/32 x 3/4")
19	JA-99132-1	1	HOOD	56	JA-99398-8	1	SPACER
20	JA-40840-8	5	SCREW- (1/4-14 x 1") (YT-15)	57	JA-37612-2	2	WASHER- Insulating
	JA-40840-6	4	SCREW- (1/4-14 x 1") (YT-14, 16 & 18)	58	JA-99324-9	1	ARM- Reverse
21	JA-99325-1	1	FORWARD ARM	59	JA-34802-0	1	PEDAL- Rubber
22	JA-99368-4	1	DECAL- Fill Level	60	JA-37681-0	2	NUT- (5/8")
23	JA-37597-8	2	BOLT	61	JA-31634-4	2	SPRING
24	JA-99101-7	1	DECAL- Lo-Lift Position	62	JA-31620-9	1	KNOB
25	JA-40391-0	1	SCREW- (10-24 x 1/2")	63	JA-99285-3	1	DECAL- Operation Warning
26	JA-44160-4	4	BOLT- (1/4-20 x 1")	64	JA-40010-4	6	SCREW- (1/4-20 x 1/2")
27	JA-99175-9	3	CLEVIS	65	JA-99356-9	1	TUBE & SUPPORT
28	JA-99981-2	1	PAD- Footboard (L.H.)	66	JA-99315-9	1	CONNECTOR
	JA-99392-4	1	PAD- Footboard (R.H.)	67	JA-99323-6	1	TUBING- Reservoir (7.26)
29	JA-40010-8	4	SCREW- (1/4-20 x 5/8")	68	JA-33982-7	1	BRACKET- Footboard
30	JA-98127-1	1	FOOTBOARD (L.H.)	69	JA-43402-7	3	SCREW- Socket (#10-24 x 1/3/4")
	JA-98325-9	1	FOOTBOARD (R.H.)	70	JA-99322-1	1	ROD
31	JA-46484-2	6	RIVET	71	JA-99398-5	1	SEGMENT
32	JA-99335-3	1	PANEL- L.H. Side	72	JA-99338-1	1	ROD- Cruise Control
	JA-99334-9	1	PANEL- R.H. Side	73	JA-99386-1	1	RESERVOIR
33	JA-99321-8	1	PLATE & SHAFT	74	JA-99096-0	1	STRAP
34	JA-45200-2	4	WASHER- Flat (#10)	75	JA-99355-8	1	CAP
35	JA-44478-2	4	NUT (#10-24)	76	JA-99101-4	1	DECAL- High Lift Position
36	JA-33962-6	2	RETAINER- Headlight	77	JA-40016-0	1	SCREW- Hex Hd. Cap (5/16-18 x 1 1/4")
37	JA-37609-1	1	HEADLIGHT				
38	JA-44431-0	1	NUT- (10-24)				
39	JA-99447-0	2	CLIP- Grill Top				

FIGURE 3

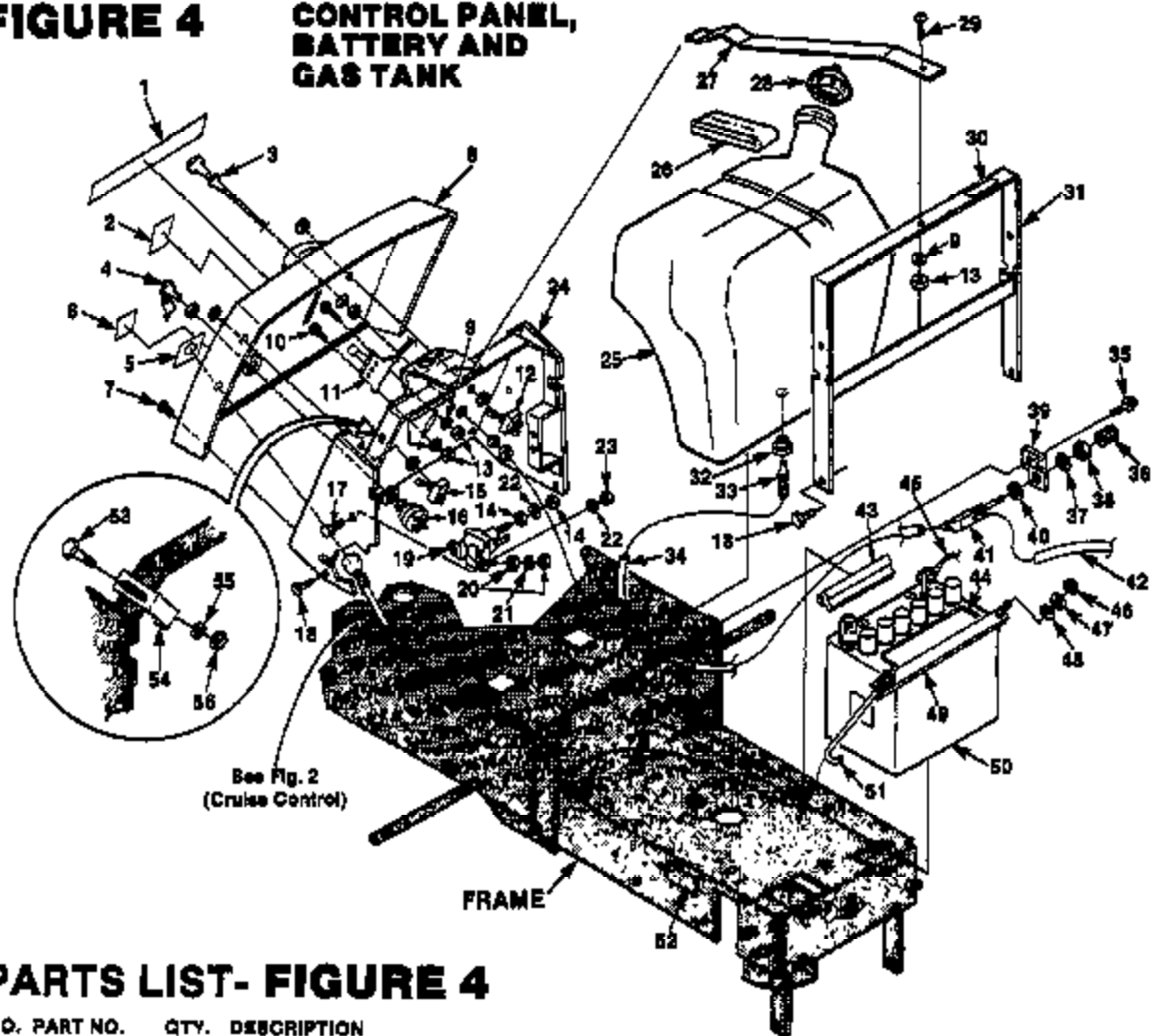
STEERING LINKAGE



PARTS LIST- FIGURE 3

NO.	PART NO.	QTY.	DESCRIPTION	NO.	PART NO.	QTY.	DESCRIPTION
1	JA-99034-6	1	WHEEL- Steering	33	JA-45302-3	1	WASHER- Plain (1/4")
2	JA-46138-7	1	PIN- Roll	34	JA-40887-8	1	SCREW- (1/4-20 x 3/4")
3	JA-99316-2	1	BELLOW- Steering	35	JA-46140-8	1	PIN
4	JA-33663-2	1	SHAFT- Steering Wheel	36	JA-37606-5	4	BUSHING- Spindle
5	JA-40010-4	2	SCREW- (1/4-20 x 1/2")	37	JA-14218-8	1	AXLE- Front
6	JA-37807-4	1	BEARING- Steering Shaft	38	JA-47122-5	2	FITTING- Grease
7	JA-34813-3	1	BUSHING	39	JA-99261-6	1	SPINDLE- L H
8	JA-37587-0	1	WASHER- Front Hub	40	JA-31006-4	2	BEARING
9	JA-33662-9	1	PINION- Steering	41	JA-40027-2	1	SCREW- (3/8-16 x 2 1/4")
10	JA-99256-1	2	WASHER	42	JA-99261-4	1	BAR- Tie
11	JA-44311-0	1	NUT- Hex (3/8-16)	43	JA-99261-7	1	SPINDLE- R H.
12	JA-44513-0	2	WASHER- Lock (1/4-20)	44	JA-37541-1	2	WASHER
13	JA-44310-2	4	NUT- Hex (1/4-20)	45	JA-37608-5	2	BOLT- Tie Bar Mtg.
14	JA-46138-3	1	PIN- Roll	46	JA-44614-2	2	WASHER- Lock (3/8")
15	JA-37610-8	1	SPACER- Steering	47	JA-99034-5	1	CAP- Steering Wheel
16	JA-14220-3	1	SUPPORT- Steering	48	JA-99236-8	1	ARM- Steering
17	JA-44382-6	1	NUT- (5/8-11)	49	JA-44476-2	1	NUT- Centerlock (3/8-16)
18	JA-37612-1	1	SPACER- Steering Gr.	50	JA-32078-0	1	KEY
19	JA-46600-8	1	BALL- .312 Dia.	51	JA-37611-5	2	SPACER- Balljoint
20	JA-31155-5	2	BUSHING	52	JA-37606-4	2	JOINT- Ball
21	JA-99256-9	1	GEAR- Steering	53	JA-31580-2	2	CAP
22	JA-44311-8	1	NUT- (1/2-13)	54	JA-44812-8	4	WASHER- Lock (1/4")
23	JA-44615-4	1	WASHER- Lock hvy. (1/2")	55	JA-31238-8	2	WASHER- Wheel Retaining
24	JA-45301-7	1	WASHER- Flat (1/2")	56	JA-99432-9	2	BRACKET & PAD
25	JA-40018-6	4	SCREW- Hex (5/16-18 x 7/8")	57	JA-40010-6	5	SCREW- (1/4-20 x 5/8")
26	JA-45300-9	8	WASHER- Flat (5/16")	58	JA-40026-8	3	SCREW- (3/8-16 x 1 3/4")
27	JA-44613-6	8	WASHER- Lock (5/16")	59	JA-37611-4	1	SPACER- Balljoint
28	JA-44310-6	4	NUT- Hex (5/16-18)	60	JA-33963-1	1	FITMAN ARM
29	JA-37806-7	1	ROD	61	JA-48004-0	2	PIN
30	JA-45302-2	5	WASHER- Flat (3/4")	62	JA-99225-2	1	SCREW- (3/8-16 x 1 1/2")
31	JA-31382-0	5	SPACER- Axle	63	JA-44311-2	3	NUT- (3/8-24)
32	JA-46006-4	1	PIN- Cotter (1/4 x 1 1/2")	64	JA-99213-1	1	TUBE- Drag Link
				65	JA-18188-4	2	RIM & TIRE ASSY.

FIGURE 4 CONTROL PANEL, BATTERY AND GAS TANK



See Fig. 2
(Cruise Control)

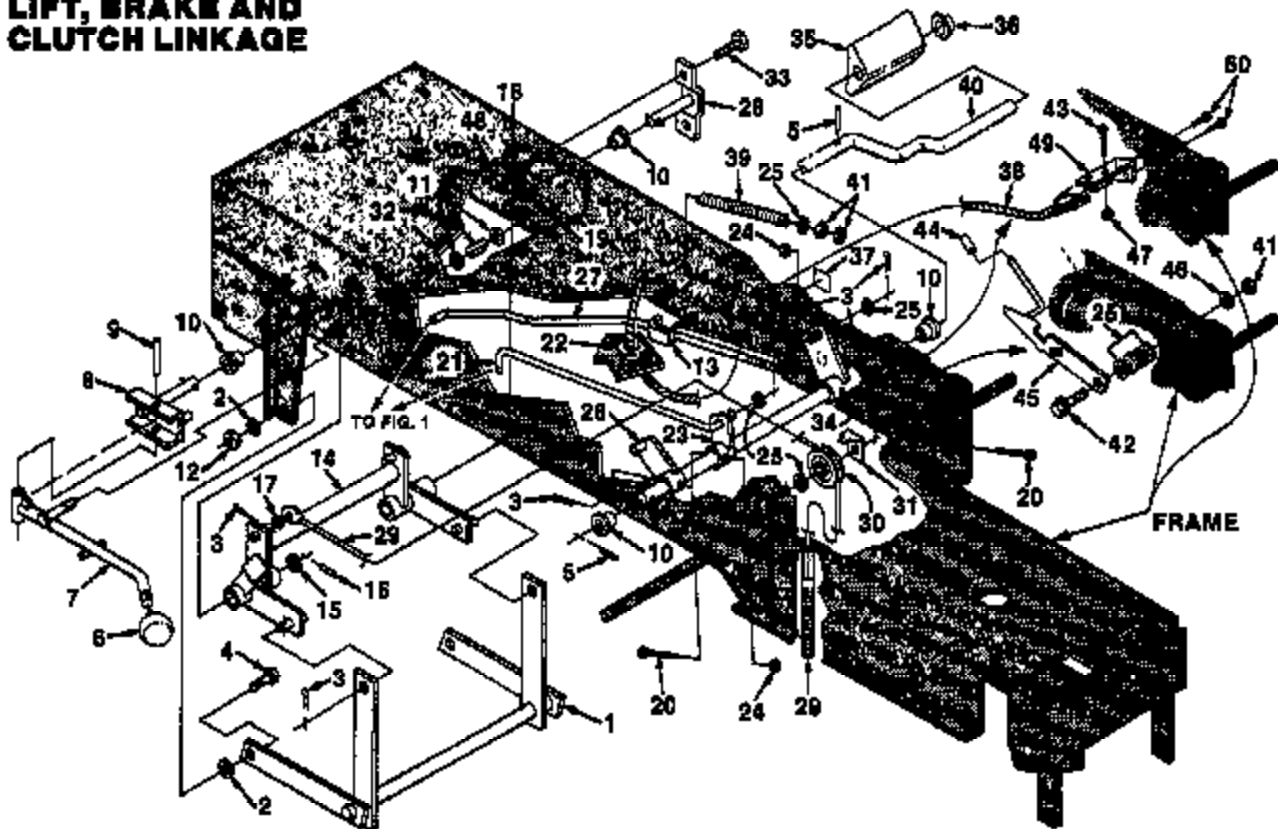
PARTS LIST- FIGURE 4

NO.	PART NO.	QTY.	DESCRIPTION	NO.	PART NO.	QTY.	DESCRIPTION
1	JA-99295-4	1	DECAL- Start-Stop	31	JA-99244-4	2	BRACKET- Gas Tank
2	JA-99222-3	1	DECAL- Throttle	32	JA-38111-7	2	BUSHING- Gas Tank
3	JA-99218-1	1	CONTROL- Choke	33	JA-99218-2	1	FITTING- Tank
4	JA-34306-0	1	KEY- Ignition	34	JA-99327-8	1	TUBE- Fuel (7.50")
5	JA-99315-5	1	DECAL- Cruise Control	35	JA-40840-4	3	SCREW- (1/4-14 x 3/4")
6	JA-99295-3	1	DECAL- Warning	36	JA-37699-4	1	KNOB- Shut Off
7	JA-40903-8	4	SCREW- (#10 x 3/4")	37	JA-44721-8	1	WASHER- Lock
8	JA-99310-2	1	PANEL- Dash	38	JA-44381-6	1	NUT- R.H. (7/16-20)
9	JA-45200-2	3	WASHER- Flat (1/4")	39	JA-99389-3	1	BRACKET- Fuel Valve
10	JA-40390-8	11	SCREW- (#10-24 x 3/8")	40	JA-45301-3	2	WASHER
11	JA-99217-7	1	CONTROL- Throttle	41	JA-37599-5	1	VALVE
12	JA-99013-6	1	SWITCH- P T O	42	JA-99448-9	1	TUBE- Fuel (28.00") (YT-15)
13	JA-44476-2	8	NUT- Hex Lock (10-24)	43	JA-99327-7	1	TUBE- Fuel (6.25") (YT-14, 16 & 18)
14	JA-44380-2	4	NUT- Hex (1/4-20)	44	JA-99230-9	1	CUSHION- Rubber
15	JA-15899-2	1	SWITCH	45	JA-87612-4	1	DECAL- Battery
16	JA-99212-8	1	SWITCH- Key	46	JA-44431-0	3	NUT
17	JA-40010-4	2	SCREW- (1/4-20 x 1/2")	47	JA-44611-6	4	WASHER- (#10)
18	JA-87697-8	4	BOLT- Steering Support	48	JA-45200-2	7	WASHER
19	JA-99556-0	1	SOLENOID	49	JA-49889-1	1	STRAP- Battery
20	JA-44430-6	4	NUT- Mach (8-32)	50	JA-99220-2	1	BATTERY
21	JA-44611-2	2	WASHER- Lock (#8)	51	JA-49700-1	2	BOLT- Battery
22	JA-44613-0	4	WASHER- Lock (1/4-20)	52	JA-99235-4	2	DECAL- Warning
23	JA-44310-2	2	NUT- Hex (1/4-20)	53	JA-40018-2	2	SCREW- (5/16-18 x 5/8")
24	JA-99217-8	1	CONTROL TOWER	54	JA-99244-4	2	BRACKET
25	JA-99201-1	1	TANK- Gas	55	JA-44730-2	2	WASHER- Int. Tooth (5/16")
26	JA-99228-5	1	PAD- Rubber	56	JA-44310-8	2	NUT- Hex (5/16-18)
27	JA-99228-7	1	STRAP- Upper				
28	JA-99221-2	1	CAP- Fuel				
29	JA-40391-0	1	SCREW- (10-24 x 1/2")				
30	00905	1	DECAL- Gasohol				

ALWAYS FURNISH MODEL AND SERIAL NUMBERS WHEN ORDERING PARTS.

FIGURE 5

LIFT, BRAKE AND CLUTCH LINKAGE



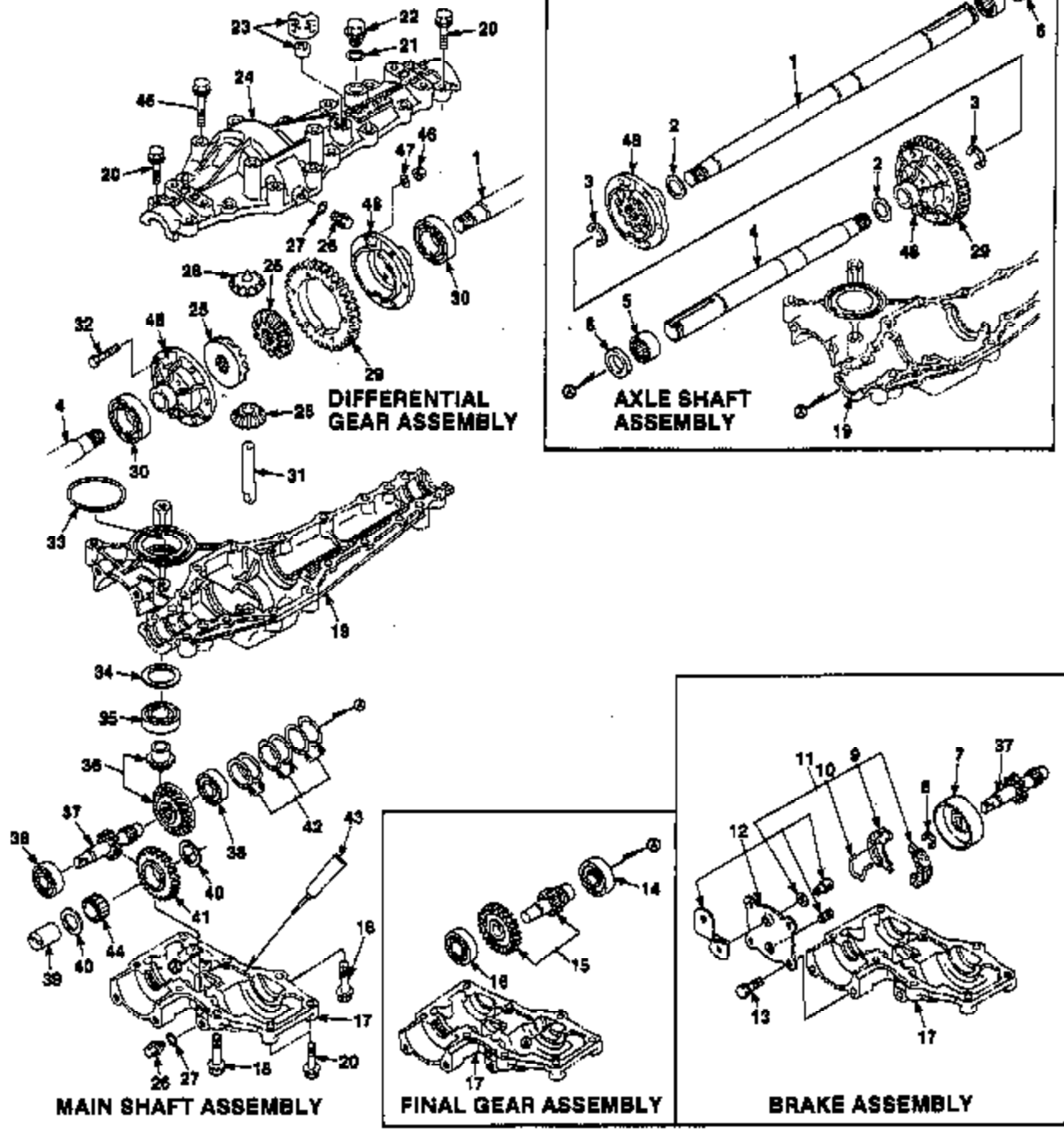
PARTS LIST- FIGURE 5

NO.	PART NO.	QTY.	DESCRIPTION	NO.	PART NO.	QTY.	DESCRIPTION
1	JA-99328-8	1	LIFT BAR ASSY.	27	JA-99813-8	1	ROD- Brake
2	JA-44614-2	8	WASHER- Lock Hvy. (3/8")	28	JA-99828-2	1	FLANGE & ROD ASSY
3	JA-46001-4	9	PIN- Cotter (3/32 x 3/4")	29	JA-99826-8	2	CABLE- Lift
4	JA-37608-4	2	BOLT- Shoulder	30	JA-37807-3	2	PULLEY- Lift Cable
5	JA-46136-3	2	PIN- Roll (1/8 x 1")	31	JA-37801-5	2	RETAINER- Cable
6	JA-34848-7	1	KNOB Shift Lever	32	JA-37608-2	1	SPRING- Compression
7	JA-14218-8	1	HANDLE ASSY	33	JA-40010-6	2	SCREW
8	JA-99328-1	1	HANDLE LIFT	34	JA-99324-3	1	BRAKE LEVER
9	JA-48134-7	1	PIN- Groove	35	JA-34489-5	1	PEDAL- Clutch
10	JA-35158-7	4	BUSHING	36	JA-37681-0	1	NUT- Push
11	JA-45200-6	8	WASHER- Flat (3/8")	37	JA-99333-8	1	DECAL- Park Brake
12	JA-44311-0	8	NUT- Hex (3/8 x 16)	38	JA-99156-0	1	SWITCH- Safety
13	JA-18186-8	1	BRACKET- Brake Spring	39	JA-37810-2	1	SPRING- Comp Brake
14	JA-99326-8	1	REAR LIFT & BUSHING	40	JA-99324-1	1	ARM- Brake/Clutch
15	JA-45302-0	2	WASHER	41	JA-44310-8	4	NUT- (5/16-18)
16	JA-46136-3	5	PIN- Roll	42	JA-37643-1	2	BOLT- Shoulder (5/16-18)
17	JA-45301-1	2	WASHER- Flat (3/8")	43	JA-40277-8	2	SCREW- Slotted Truss Hd (#4-40 x 1)
18	JA-44612-8	2	WASHER- Lock (1/4")	44	JA-35307-7	1	TIP
19	JA-44471-8	8	NUT- Lock (5/16-18)	45	JA-89432-7	1	LATCH & LEVER
20	JA-43402-7	3	SCREW- Socket	46	JA-44613-8	2	WASHER- Lock Hvy (5/16")
21	JA-37809-8	1	ROD- Idler Act	47	JA-44480-2	2	NUT- Hex (#4-40)
22	JA-37806-6	1	BUSHING- Snap	48	JA-44310-2	4	NUT- Hex (1/4-20)
23	JA-89324-2	1	LEVER- Clutch	49	JA-87606-1	1	BRACKET
24	JA-44478-2	7	NUT- C'lock (#10-24)	50	JA-87597-8	2	SCREW- (1/4-14 x 44")
25	JA-45300-9	8	WASHER- Flat (5/16")				
26	JA-89433-1	1	ARM- Deactivating				

ALWAYS FURNISH MODEL AND SERIAL NUMBERS WHEN ORDERING PARTS.

FIGURE 6

TRANSAXLE



PARTS LIST- FIGURE 6

NO.	PART NO.	QTY.	DESCRIPTION	NO.	PART NO.	QTY.	DESCRIPTION
1	JA-99454-5	1	AXLE & SHAFT (R)	25	JA-99452-8	2	GEAR- Differential
2	JA-99454-3	2	WASHER- (20 x 29 .6 x 2)	26	JA-99450-8	2	PLUG
3	JA-99454-7	2	RING- (15)	27	JA-99460-8	2	PACKING
4	JA-99454-4	1	AXLE- Shaft	28	JA-99453-2	2	PINION- Differential
5	JA-99454-6	2	NEEDLE	29	JA-99453-9	1	GEAR- Final (43)
6	JA-99454-8	2	SEAL	30	JA-99453-5	2	BEARING- (5005)
7	JA-99454-8	1	DRUM- Brake	31	JA-99453-1	1	SHAFT- Diff. Pinion
8	JA-99455-7	1	RING- (10)	32	JA-99453-5	5	BOLT- (6 x 30)
9	JA-99455-4	2	SHOE- Brake	33	JA-99451-4	1	PACKING- (G60)
10	JA-99455-5	1	SPRING	34	JA-99451-8	1	WASHER- (.30 x 42 x 2)
11	JA-99455-3	1	BRAKE- Assy (CB-1)	35	JA-99452-7	1	BEARING- (5004)
12	JA-99455-8	1	BRAKE COVER ASSY.	36	JA-99451-9	1	MOTOR GEAR ASSY
13	JA-99455-8	4	BOLT- (w/washer) (8 x 20)	37	JA-99452-1	1	MAIN SHAFT
14	JA-99454-1	1	BEARING (6203)	38	JA-99452-8	2	BEARING- (5202)
15	JA-99453-8	1	FINAL PINION ASSY.	39	JA-99452-3	1	SHAFT- Idle
16	JA-99454-2	1	BEARING- (6302)	40	JA-99452-5	2	WASHER- Thrust
17	JA-99450-5	1	CASE- Lower	41	JA-99452-4	1	GEAR- (24)
18	JA-99451-8	8	SCREW- Tapping (8 x 35)	42	JA-99452-2	1	SHIM- ASSY.
19	JA-99450-2	1	MISSION CASE	43	JA-99450-1	1	SEALANT
20	JA-99451-5	14	SCREW- Tapping (8 x 30)	44	JA-99452-6	1	NEEDLE- (20 x 28 x 12)
21	JA-99450-9	1	PACKING- (P16)	45	JA-99451-7	4	SCREW- Tapping (8 x 45)
22	JA-99450-7	1	PLUG- (14)	46	JA-99453-7	5	NUT
23	JA-99450-4	1	VENT VALVE ASSY.	47	JA-99453-4	8	WASHER
24	JA-99450-3	1	UPPER CASE	48	JA-99453-3	2	CASE

FIGURE 7 WIRING DIAGRAM

