

Parts List for

Jacobsen CHIEF

Lawn and Garden Tractor



No. 53028 8 H.P.
Serial No. 1601 and Up

IMPORTANT

DO NOT MISLAY OR LOSE YOUR PARTS LIST AS THIS IS THE ONLY MEANS YOU HAVE OF ORDERING REPLACEMENT PARTS ACCURATELY.

INSTRUCTIONS FOR ORDERING PARTS

To eliminate error and speed delivery:

1. Write your NAME and ADDRESS on your order PLAINLY.
2. Explain WHERE and HOW to make shipment.
3. GIVE PRODUCT NUMBER, and SERIAL NUMBER that is stamped on the NAME PLATE of your product.
4. Order from your PARTS LIST as this is the ONLY means we have of identifying the parts you need. Order by QUANTITY DESIRED, the PART NUMBER, and the DESCRIPTION OF PART.
5. Send your order to your nearest JACOBSEN DEALER, AUTHORIZED SERVICE STATION, or AUTHORIZED

JACOBSEN SERVICE DISTRIBUTOR as indicated in your SERVICE STATION DISTRIBUTOR'S DIRECTORY.

6. INSPECT ALL SHIPMENTS ON RECEIPT. If any parts are damaged or missing, file a claim with the carrier before accepting.
7. Do not return material to your nearest JACOBSEN DEALER, AUTHORIZED SERVICE STATION or AUTHORIZED JACOBSEN SERVICE DISTRIBUTOR without a letter of explanation. Make a list of all returned parts, show your name and address and include it with the shipment. TRANSPORTATION CHARGES MUST BE PREPAID.

WARRANTY

Jacobsen Consumer products are guaranteed to the original retail purchaser against defective material and workmanship for ONE YEAR from date of purchase. The Jacobsen Manufacturing Company will replace free of charge (i.e. Authorized Service Station any part found to be defective when returned, TRANSPORTATION CHARGES PREPAID, except items warranted by the original manufacturer such as engines and other items that may carry a separate warranty.

The Jacobsen Commercial products specified below as well as any of the Consumer products used for commercial purposes are guaranteed to the original retail purchaser against defective material and workmanship for ninety (90) days from date of purchase. The Jacobsen Manufacturing Company will replace free of charge (i.e. Authorized Service Station any part found to be defective when returned, TRANSPORTATION CHARGES PREPAID, except items warranted by the original manufacturer such as engines and other items that may carry a separate warranty.

This warranty will not apply to Jacobsen products repaired or altered outside of our factory or an authorized service station which, in the Company's judgment, affects its condition or operation nor will it apply to any failures resulting from misuse, negligence, or accident.

In addition to the above warranty, the crankshaft mounted on Jacobsen Rotary Mowers equipped with Jacobsen 4-blade Turbocore now carries an unconditional one year warranty against bending while the mower is in operation.

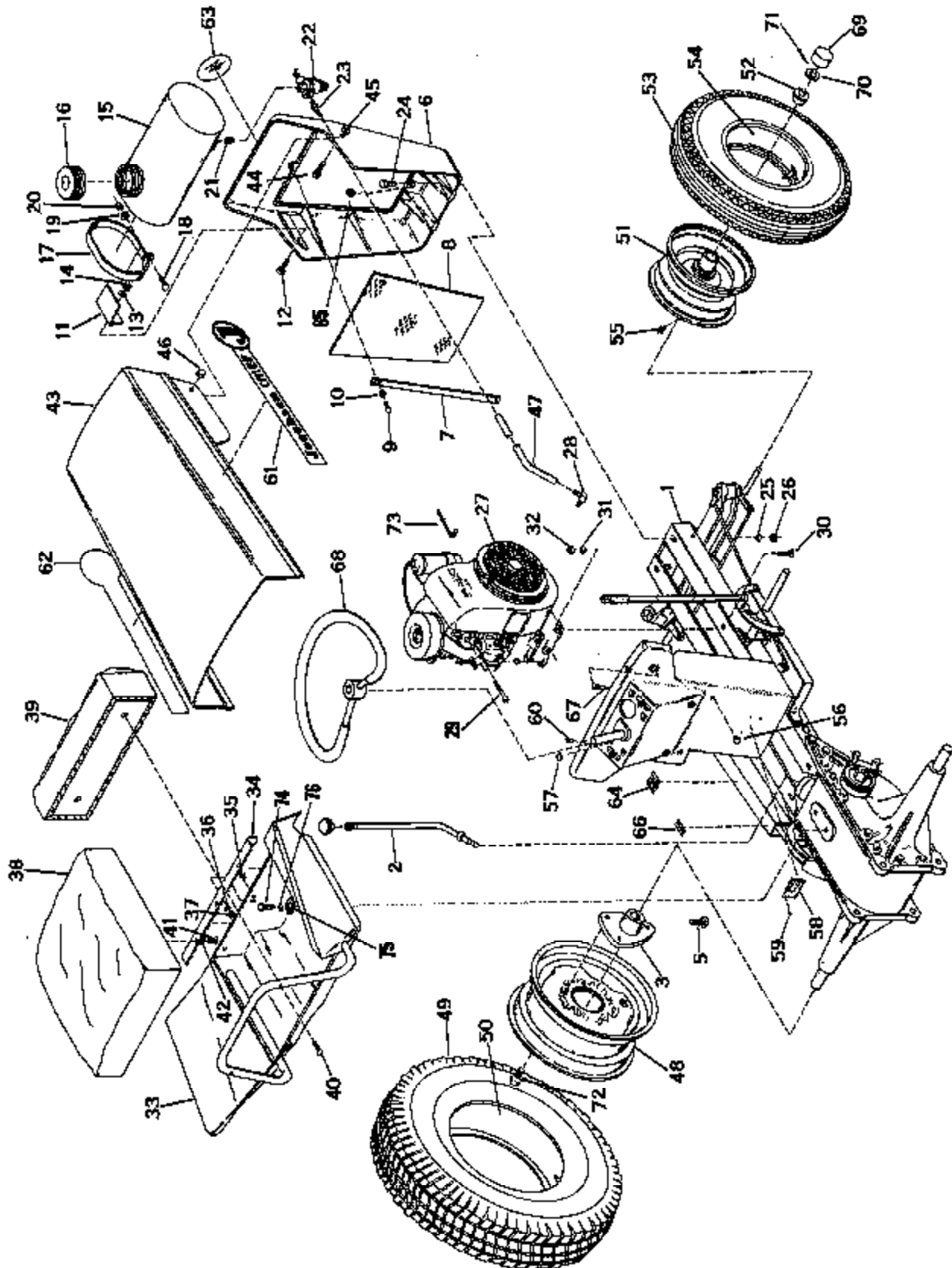
The Company also reserves the right to incorporate any changes in design without obligation to make these changes on units previously sold.

JACOBSEN MANUFACTURING COMPANY

Jacobsen Products are manufactured and sold under the following United States Patents.

2421287	2824047	2890741	2847818	2055402	2883095	Swiss Patent
2433031	2832782	2718059	2881247	2803404	2008438	246888
2434978	2807102	2723254	2882048	2856543	2018280	
2438458	2871804	2787778	2900950	2971814	2087771	Canadian Patent
2480848	2858180	2787107	2905814	2874468	2084748	430460
2684195	2872800	2798143	2808882	2848888		

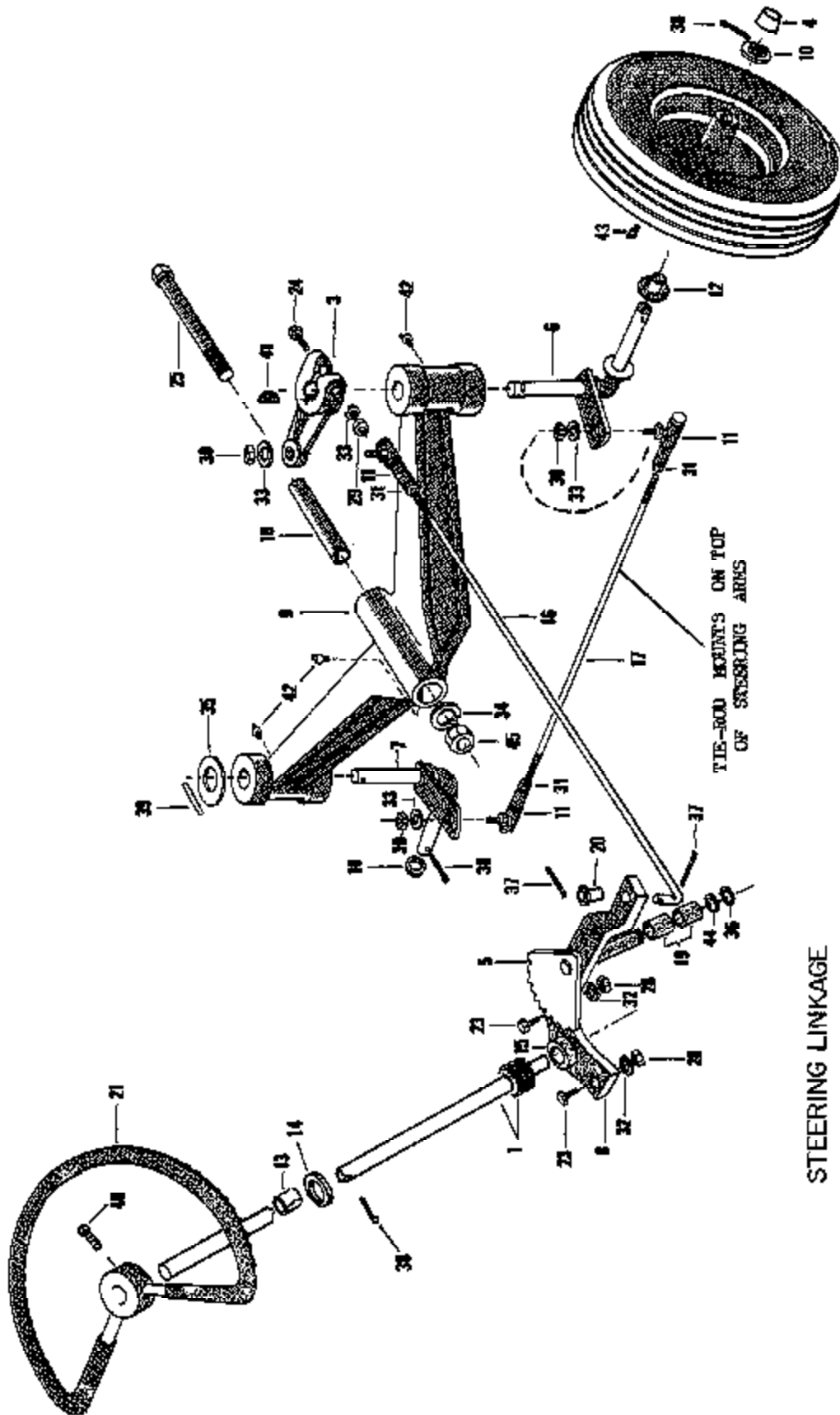
- * Park 30"
- * Turf King
- * 20" Commercial Rotary
- * 34" Mow-Mobile & Accessories
- * 37" Mow-Mobile & Accessories
- * 48" Mow-Mobile & Accessories



TRACTOR ASSY.

Ref. No.	Part No.	Quan.	Description	Ref. No.	Part No.	Quan.	Description
1	112477	1	Frame Assembly	37	444708	3	Nut, 1/4-20 Hex - Gripco - Center lock E-21
2	112682	1	Shift Lever Assembly				4248 - Seat Hinge to Fender Assm. Mtg.
3	203933	2	R. and L.H. Rear Wheel Hub	38	315435	1	Cushion Seat
5	412059	2	Screw, 3/8-1 16 x 1 Sq. Hd. Kn. Cup Pt. Set	39	315436	1	Back, Seat Cushion
6	112630	1	Front Cowling Assembly	40	402232	2	Screw, 1/4-20 x 1-1/4 Rd. Hd. Machine -
7	325806	1	Bracket - Front Cowling Grill Mtg.				Back Cushion to Tube Mtg.
8	325805	1	Grille - Front Cowling	41	446128	3	Screw, 1/4-20 x 3/4 Rd. Hd. Machine - Seat
9	408852	2	Screw - 1/4-20 x 1/2 Hex. Hd. Thd. Cutting -				to Hinge Mtg.
10	446128	2	Grille Mtg.	42	453023	3	Washer, 1/4 SAE - Seat to Hinge Mtg.
11	325802	2	Lockwasher, 1/4 Med. - Grille Mtg.	43	112645	1	Hood Assembly
12	400190	2	Bracket - Fuel Tank Mtg.	44	400190	2	Screw, 5/16-18 x 1-1/4 Hex Hd. Cap - Hood
13	446134	2	Screw, 5/16-18 x 1-1/4 Hex. Hd. Cap - Fuel				Pivot
14	443106	2	Tank Bracket Mtg.	45	443806	2	Nut, 5/16-18 Hex Jam - Hood Pivot
15	107250	1	Lockwasher, 5/16 Med. - Fuel Tank Bracket	46	445010	2	Nut, 5/16-18 Hex Acorn - Hood Pivot
16	107218	1	Hex Nut, 5/16-18 - Fuel Tank Bracket Mtg.	47	325822	1	Fuel Line
17	308601	2	Fuel Tank Cap Assembly	48	107840	2	Rear Wheel Disc Assembly
18	402232	2	Strap - Fuel Tank Mtg.	49	*	2	Rear Wheel Tire 6.00 x 12 2 Ply Diamond
19	446128	2	Lockwasher, 1/4 Med. - Fuel Tank Straps				Thread
20	443102	2	Mtg. - Fuel Tank Straps	50	*	2	Rear Tire Inner Tube, 6.00 x 12 Goodyear
21	471774	1	Nipple - 1/8 NPT Close - Fuel Filter to				Rubber Co.
22	107918	1	Tank Mtg.	51	107925	2	Front Wheel Disc Assembly w/315302 and
23	315395	1	Fuel Filter Assem.				471214
24	400264	2	Fitting - Fuel Line on Filter	52	315302	4	Front Axle Wheel Bearing
25	446140	2	Screw, 3/8-16 x 1-1/4 Hex Hd. Cap - Front	53	*	2	Front Wheel Tire, 4-00/4.80 x 8
26	443110	2	Cowling to Frame Mtg.	54	*	2	Inner Tube, 4.00/4.80 x 8
27	314044	1	Lockwasher, 3/8 Med. - Front Cowling to	55	471214	2	Grease Fitting, 1/4-28 - Front Wheel Disc
28	403632	1	Frame Mtg.	56	323932	1	Button Plug - Screw Auger Bkt. Mtg. Hole
29	315382	4	Nut, 3/8-16 Hex - Front Cowling to Frame	57	325908	1	Button Plug - Light Switch Mtg. Hole
30	443110	4	Mtg. - Engine Assembly Complete - Kohler	58	409508	2	Serial No. Plate
31	443140	4	Fitting, Fuel Line on Carburetor				Screw, #2 x 1/4 Rd. Hd. Type "U" - Ser.
32	112621	1	Screw, 8-32 x 1-7/8 Rd. Hd. Mach. - Air	60	325837	2	No. Plate Mtg.
33	325866	1	Horn Mtg.	61	325846	1	Bumper Boot
34	402222	1	Engine Mtg. Bolt - Engine to Frame Mtg.	62	325847	1	Decal - Jacobsen Chief R.H.
35	402222	1	Lockwasher, 3/8 Med. - Engine to Frame Mtg.	63	313226	1	Decal - Jacobsen Chief L.H.
36	453023	3	Nut, 3/8-16 Hex. - Engine to Frame Mtg.	64	315384	1	Decal - Jacobsen Power Lawn Tool
			Fender Assembly	65	325848	1	Decal - Gear Shift
			Hinge Seat Mtg.	66	311897	1	Button Plug - Front Cowl
			Screw, 1/4-20 x 1/2 Ed. Hd. Mach. Seat	67	315654	2	Patent Decal
			Hinge to Fender Assm. Mtg.	68	109698	2	Ignition Key
			Washer, 1/4 SAE Seat Hinge to Fender Assm.	69	316802	2	Steering Wheel Assembly
			Mtg.	70	312398	2	Front Wheel Cap
				71	460040	2	Washer, Front Wheel Retainer
				72	315298	6	Cotter Pin, 5/32 x 1-1/4 - Front Wheels to
				73	316775	1	Asle Mtg.
				74	400258	2	Rear Wheel Mtg. Bolt
				75	323828	2	Hex Wrench - Oil Drain Plug
				76	446140	2	Screw - 3/8-16 x 3/4 Hex Hd. Cap
							Washer - Special
							Lockwasher - 3/8 Med

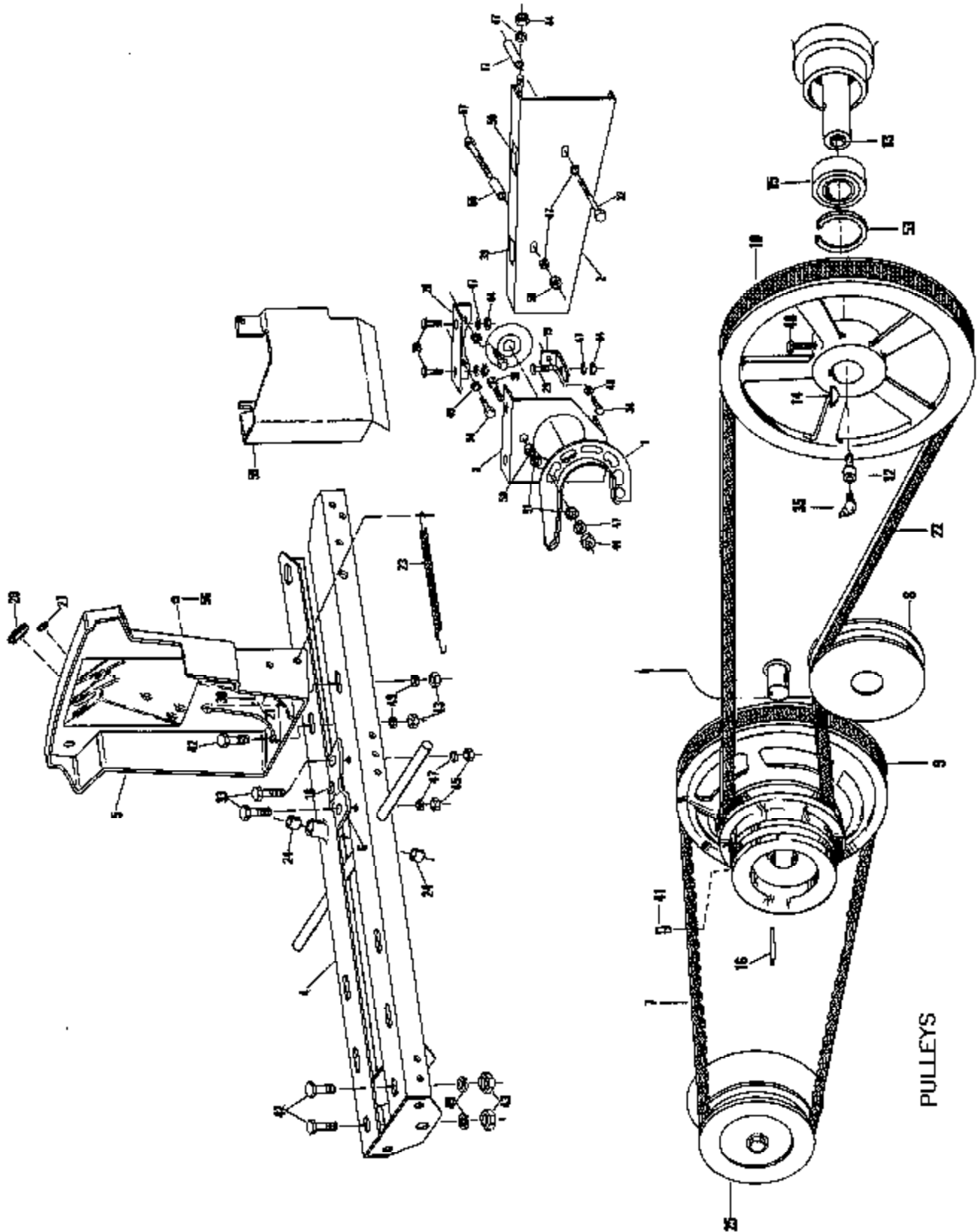
* Order from Local Dealer. ALWAYS GIVE SERIAL NUMBER WHEN ORDERING PARTS



STEERING LINKAGE

Ref. No.	Part No.	Quan.	Description	Ref. No.	Part No.	Quan.	Description
1	112594	1	Steering Rod and Pinion Assembly	25	400559	1	Screw, 5/8-18 x 5" Hex. Hd. Cap
3	204156	1	Steering Arm	28	443108	2	Nut, 5/16-24 Hex
4	316802	2	Front Wheel Cap	29	443109	1	Nut, 3/8-16 Hex
5	112600	1	Quadrant and Arm Assembly w/Ref. 20	30	443112	3	Nut, 3/8-24 Hex
6	107953	1	R.H. Spindle Assembly	31	443812	4	Nut, 3/8-24 Hex Jam
7	107954	1	L.H. Spindle Assembly	32	446134	2	Lockwasher, 5/16 x .125 x .078
8	107963	1	Steering Support Bracket and Bushing Assembly	33	446140	3	Lockwasher, 3/8 x .141 x .094
9	204225	1	Axle Front	34	446161	1	Lockwasher, 5/8 x .201 x .126
10	312398	2	Hub, Front Wheel	35	452017	1	Washer, 2" O.D. x 13/32" I.D.
11	310089	3	Joint, Ball	36	458407	1	Ring Retainer
12	315302	4	Bearing, Front Axle Wheel	37	460013	2	Pin, 3/32 x 3/4 Cotter
13	315313	1	Bearing Steering Tube	38	460039	3	Pin, 5/32 x 1-1/4 Cotter
14	316016	1	Washer, 1-3/32 O.D. x 25/32 I.D.	39	461201	1	Pin, 1/4 x 1-1/2
15	315315	1	Bushing Steering Rod	40	411017	1	Screw, 3/8-16 x 7/8 Full Dog Pt. Set, Sq. Hd.
16	315318	1	Steering Draglink	41	463017	1	Key, #9 Woodruff 3/16 x 3/4
17	315321	1	Rod, Tie	42	471207	3	Fitting 1/4 Grease
18	315336	1	Tube, Front Axle Support	43	471214	2	Grease Fitting 1/4-28
19	315393	2	Bushing, Steering Quadrant Pivot	44	453019	1	Washer, 1-5/16 O.D. - 21/32 I.D.
20	325725	1	Bushing, Steering Arm	45	443827	1	Nut, 5/8-18 Hex
21	109698	1	Steering Wheel				
23	400226	2	Screw, 5/16-24 x 1" Hex Hd. Cap				
24	400270	1	Screw, 3/8-16 x 2" Hex Hd. Cap				

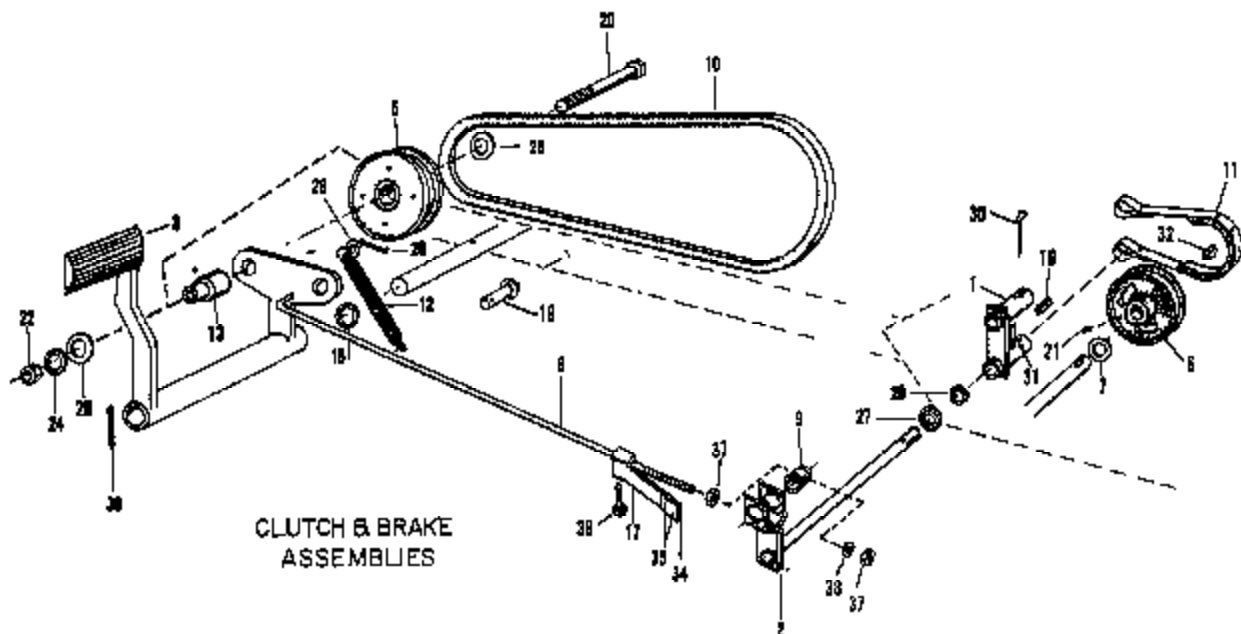
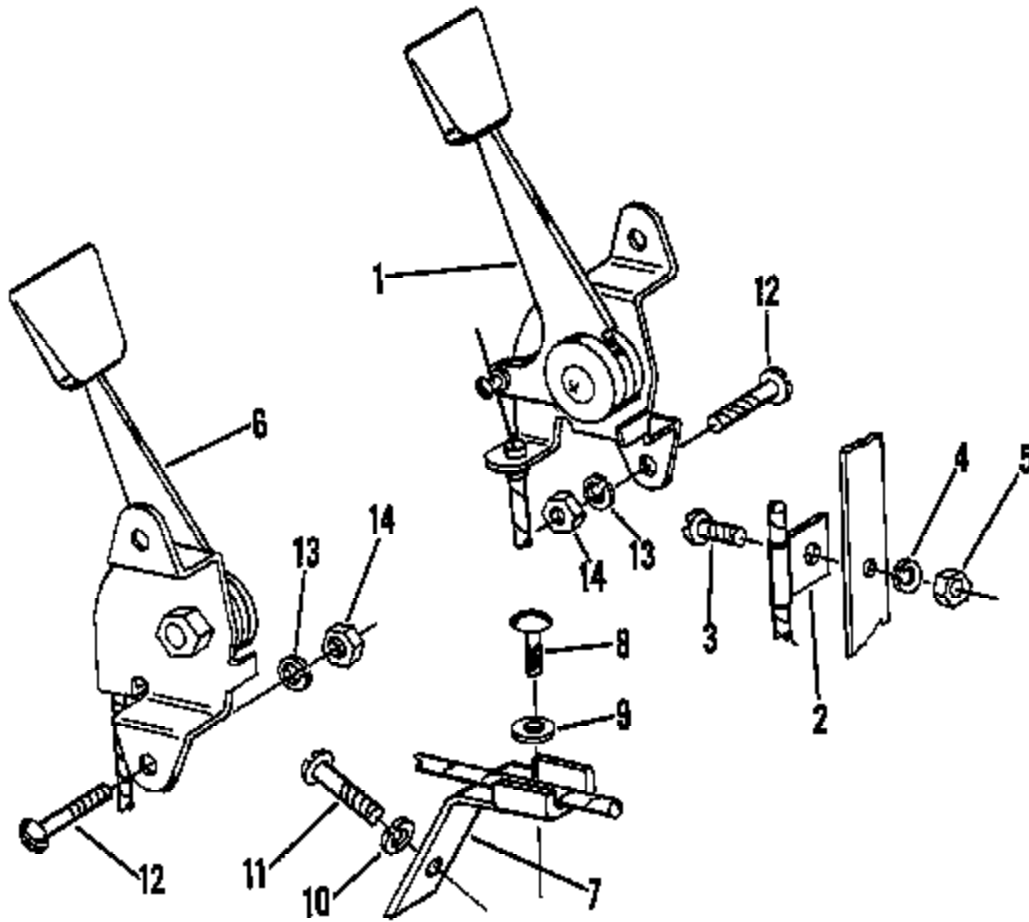
ALWAYS GIVE SERIAL NUMBER WHEN ORDERING PARTS



PULLEYS - PULLEY COVERS AND FRAME

Ref No	Part No.	Quantity	Description	Ref. No.	Part No.	Quantity	Description
1	204169	1	P.T.O. Belt Retainer - Front	29	400182	3	Screw, 5/16-18 x 5/8 Hex Hd. Cap
2	112622	1	Belt Guard Assembly	31	400186	1	Screw, 5/16-18 x 1" Hex Hd. Cap
3	107952	1	Belt Guard Assembly - Front	32	400202	1	Screw, 5/16-18 x 3 Hex Hd. Cap
4	112477	1	Frame Assembly - W/Ref. No. 24	33	400226	2	Screw, 5/16-24 x 1" Hex Hd. Cap
5	204231	1	Panel Rear	34	400256	3	Screw, 3/8-16 x 5/8 Hex.Hd. Cap
6	107963	1	Steering Support Bracket and Bushing Assembly	35	471224	1	Fitting, 1/8 x 67-1/2° Zerk Angle Grease
7	315402	1	Belt, Starter Generator Drive	38		1	Serial No. Plate - Lower Center Cowling
8	108151	1	Clutch and Idler Flat Pulley Assembly	39	315384	1	Decal, Gear Shift
9	204165	1	Pulley, Engine P.T.O.	40	412025	1	Screw, 3/8-16 x 3/4 Sq. Hd. Knurled Cup Pt. Set
10	203954	1	Pulley, Input Transmission	41	415527	2	Screw, 5/16-18 x 3/4 Socket Hd. Knurled Cup Pt. Set
12	471860	1	Reducer, 1/2 x 1/8	42	400264	4	Screw, 3/8-16 x 1-1/4 Hex Hd. Cap
13	315276	2	Bushing, Input Gear	43	443110	4	Nut, 3/8-16 Hex
14	315287	1	Key, Input Pulley	44	443106	5	Nut, 5/16 x 18 Hex
15	315288	1	Bearing, Input Gear	45	443108	2	Nut, 5/16 x 24 Hex
16	315307	1	Key, 1/4 x 1/4 x 1-5/8	47	446134	9	Lockwasher, 5/16 x .125 x .078
17	325499	1	Spacer, Belt Guard Mounting - Rear	49	446140	7	Lockwasher, 3/8 x .141 x .094
18	315393	1	Bushing, Steering Rod	50	311897	1	Decal, Patent
19	315339	1	Bracket, Lower Front	51	453009	2	Washer, 11/16 O.D. x 11/32 I.D. x .080/.051 Tbk.
20	323862	1	Plug Button - Ammeter (St'd.)	53	458113	1	Ring, #5000-185 Truarc Internal Retainer
21	409508	2	Screw, #2 x 1/4 - Ser. Plate Mounting	55	315310	1	Spacer, Belt Guard Mtg. - Front
22	315375	1	Belt, Transmission	56	323932	1	Plug Button - For 11/32 Dia. Hole
23	315390	1	Spring, Belt Tension	57	401166	1	Screw, 5/16-18 x 3-3/4 Hex Rd. Cap
24	315393	2	Bushing, Steering Quadrant Pivot	58	443806	2	Nut, 5/16-18 Hex Jam
25	315404	1	Pulley, Starter Generator	59	113729	1	Heat Deflector
27	325908	1	Plug Button, Light Switch				
28	315471	1	Bracket, Belt Guard Mounting - Upper Front				

ALWAYS GIVE SERIAL NUMBER WHEN ORDERING PARTS



CHOKE AND THROTTLE CONTROLS

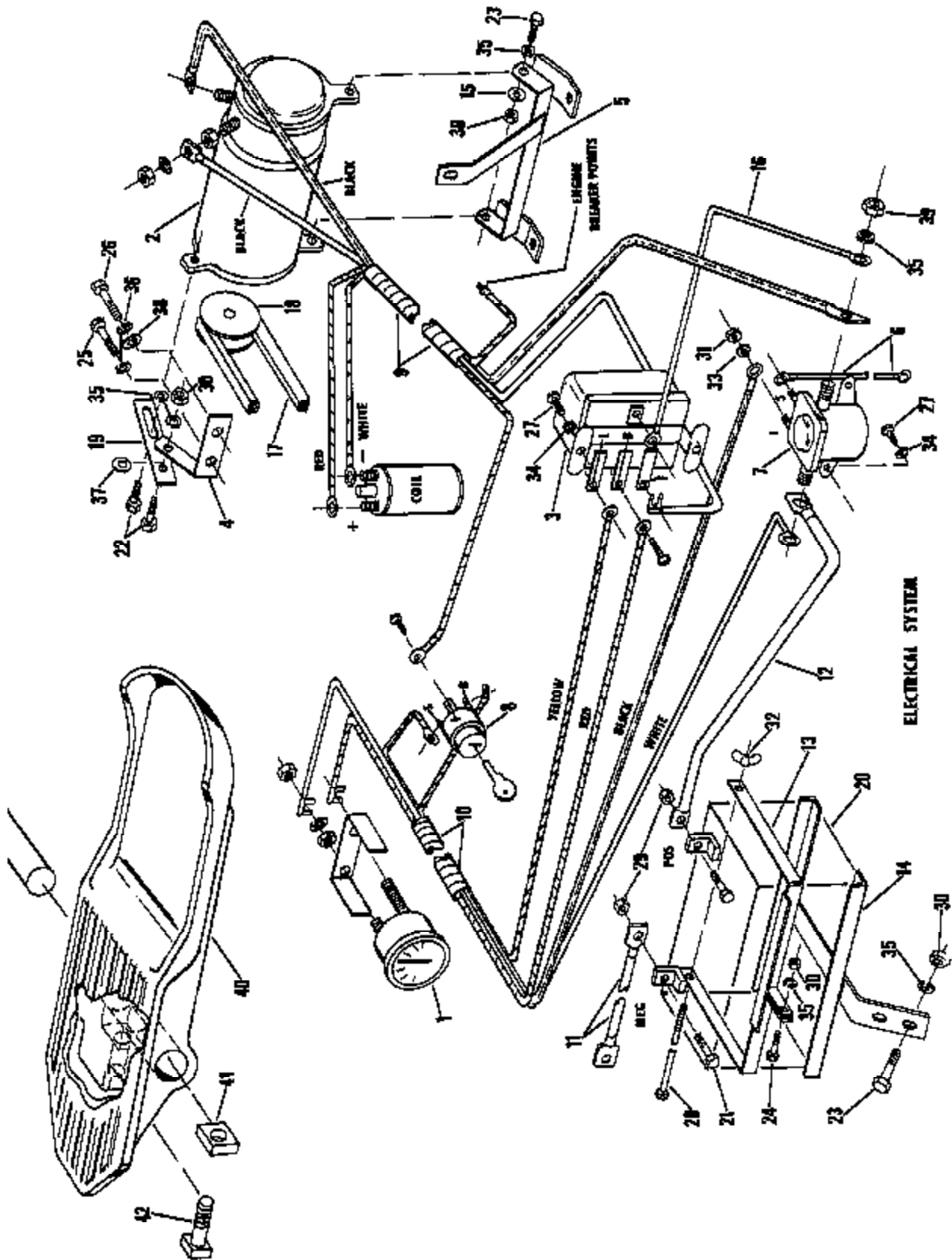
Ref. No.	Part No.	Quan.	Description	Ref. No.	Part No.	Quan.	Description
1	112656	1	Throttle Control Assembly	9	455008	1	Washer, 3/16 - Ch. Wire Mtg. to Bracket
2	303451	1	Clip - Throttle Control Mtg.	10	446110	1	Lockwasher, #8 - Bracket Mtg. to Air Horn
3	402146	1	Screw, #10-32 x 1/2 Rd. Hd. Machine - Throttle Clip to Eng. Mtg.	11	403532	1	Screw, 8-32 x 1-7/8 Rd. Hd. Mach. - Bracket Mtg. to Air Horn
4	446116	1	Lockwasher, #10 - Throttle Clip to Eng. Mtg.	12	402122	4	Screw, #10-24 x 3/4" Rd. Hd. Mach. - Bracket Control to Panel Mtg.
5	444312	1	Nut, #10-32 - Throttle Slip to Eng. Mtg.	13	446116	4	Lockwasher, #10 Med. - Bracket Control to Panel Mtg.
6	112654	1	Choke Control Lever Assem.	14	494310	4	Nut #12-w4 Hex. - Bracket Control to Panel Mtg.
7	325819	1	Bracket - Choke Wire Mtg. to Air Horn				
8	402058	1	Screw, 8-32 x 1/2 Rd. Hd. Mach. - Ch. Wire Mtg. to Bracket				

ALWAYS GIVE SERIAL NUMBER WHEN ORDERING PARTS

CLUTCH AND BRAKE ASSEMBLIES

Ref. No.	Part No.	Quan.	Description	Ref. No.	Part No.	Quan.	Description
1	108545	1	Brake Pressure Arm Assembly	22	443110	1	Nut, 3/8-16 Hex.
2	107912	1	Rear Brake Arm and Shaft Assembly	24	446140	1	Lockwasher, 3/8 x .141 x .094
3	204222	1	Brake and Clutch Pedal Assembly	25	453009	1	Washer, 11/16 O.D. x 11/32 I.D. x .080/.051 Thk. for 5/16 Bolt
5	108151	1	Clutch and Idler Pulley Assembly	26	453010	2	Washer, 3/16 O.D. x 3/32 I.D. x .080/.051 Thk. for 3/8 Bolt
6	204166	1	Drum, Brake	27	454010	1	Washer, .880/.860 O.D. x .520/.510 I.D. x .040 Thk. Style 7 Spring
7	315257	1	Seal Input Shaft Oil	28	456025	1	Washer, 1" O.D. x 17/32 I.D. x 1/16 Thk. Flat
8	315328	1	Rod, Brake	29	460014	1	Pin, 3/32 x 3/4 Cotter
9	327898	1	Pin, Brake Rod Pivot	30	480030	3	Pin, 1/8 x 1-1/4 Cotter
10	315375	1	Belt, Transmission	31	461169	1	Pin, 5/32 x 3/4 Type 1 Groove
11	109544	1	Brake Band and Lining Assembly	32	463109	1	Key, Morton #HP-506
12	315390	1	Spring, Belt Tension	34	316797	1	Brake Lining
13	315223	1	Spacer, Idler Pulley	35	464103	2	Semi-Tubular Steel Rivet, 1/8 x 5/16 Dual Head
15	316016	1	Washer	36	412015	1	Sq.Hd. Cup Pt. Set
16	316194	1	Key, Parallel	37	444718	2	Screw, 5/16-18 x 5/8
17	108585	1	Brake, Drive Pulley, W/Lining No. 316797	38	453009	1	Nut, 5/16-18 Hex Gripco Center Lock
18	416492	1	Pin 5/16 x 1/2 Standard Clevis				Washer, 11/32 I.D.
20	400272	1	Screw, 3/8-16 x 2-1/2 Hex. Hd. Cap				
21	415521	1	Screw - 5/16-18 x 3/8 Socket Hd. Knurled Cup Pt. Set				

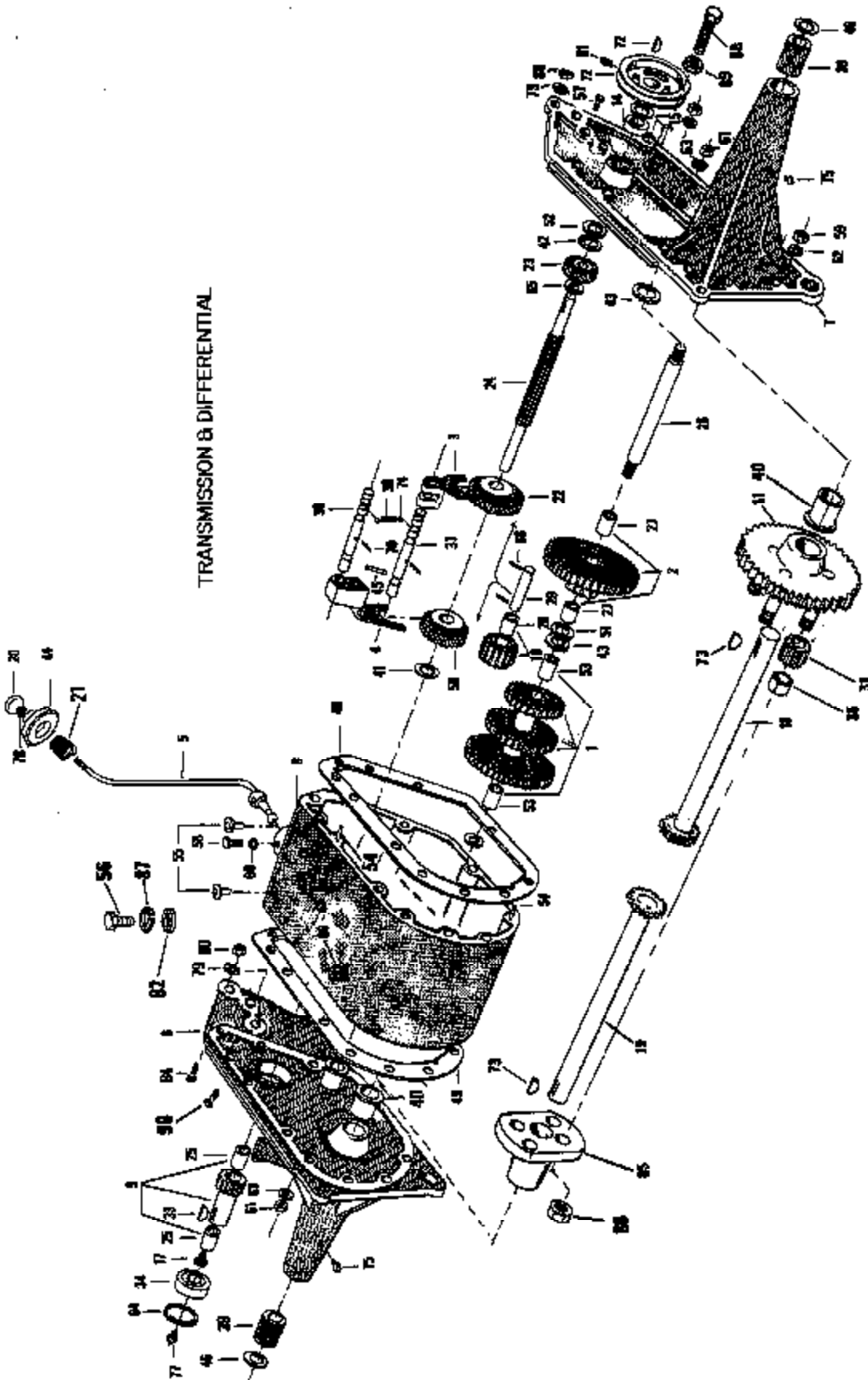
ALWAYS GIVE SERIAL NUMBER WHEN ORDERING PARTS



ELECTRICAL SYSTEM MODEL 100-C DELUXE

Ref. No.	Part No.	Quan.	Description	Ref. No.	Part No.	Quan.	Description
1	*	1	Ammeter W/Bracket, Nuts and Lockwashers Stewart-Warner No. D357M-D6	20	317004	1	Battery - 12 Volt
2	*	1	Starter - Generator Assem. W/Nuts and Lockwashers - Delco-Remy No. 1101948	21	400108	2	Screw, 1/4-20 x 3/4 Hex Hd. Cap
3	*	1	Voltage Regulator W/Screws - Delco Remy No. 1118988	22	400184	2	Screw, 5/16-18 x 3/4 Hex Hd. Cap
4	107942	1	Starter Generator Mtg. Bracket Assem. - Upper	23	400190	4	Screw, 5/16-18 x 1-3/4 Hex Hd. Cap
5	107946	1	Starter Generator Bracket Assem. - Lower	24	400196	1	Screw, 5/16-18 x 2 Hex Hd. Cap
6	112206	1	Cable - Solenoid to Ground (Black)	25	400258	1	Screw, 3/8-16 x 3/4 Hex Hd. Cap
7	112218	1	Solenoid Starter	26	400262	1	Screw, 3/8-16 x 1" Hex Hd. Cap
8	112219	1	Ignition Switch Assembly W/Screws - Deluxe	27	408852	4	Screw, 1/4-20 x 1/2 Hex Hd. Slotted Thr. Cutting
	315367	1	Ignition Switch Assembly W/Screws - Standard	28	441808	1	Bolt, 1/4-20 x 8-1/2 Sq. Hd. Mach.
9	112652	1	Harness - Starter and Coil Cables	29	443102	2	Nut, 1/4-20 Hex
10	112653	1	Harness - Switch and Ammeter Cables	30	443106	6	Nut, 5/16-18
11	112658	1	Cable - Battery to Ground (Black)	31	444312	2	Nut, #10-24 Hex
12	112659	1	Cable - Battery to Solenoid (Red)	32	445612	1	Nut, 1/4-20 Std. Wing
13	112683	1	Battery Retainer Assembly	33	446116	2	Lockwasher, #10
14	112684	1	Battery Carrier Assembly	34	446128	4	Lockwasher, 1/4
15	308949	AR	Washer	35	446134	9	Lockwasher, 5/16 Med.
16	315352	1	Cable - Voltage Regulator to Solenoid (White)	36	446140	2	Lockwasher, 3/8 Med.
17	315402	1	Belt - Starter Generator	37	452006	1	Washer, 3/8
18	315404	1	Pulley - Starter Generator	38	452008	1	Washer, 7/16
19	315420	1	Link, Starter Generator Mtg.	39	443108	2	Nut, 5/16-24 Hex Jam
				40	204158	2	Footrest
				41	444508	2	Nut - Sq. 5/16-18
				42	412020	2	Screw, 5/16-18 Sq. Hd. Cup Pt. Set

ALWAYS GIVE SERIAL NUMBER WHEN ORDERING PARTS

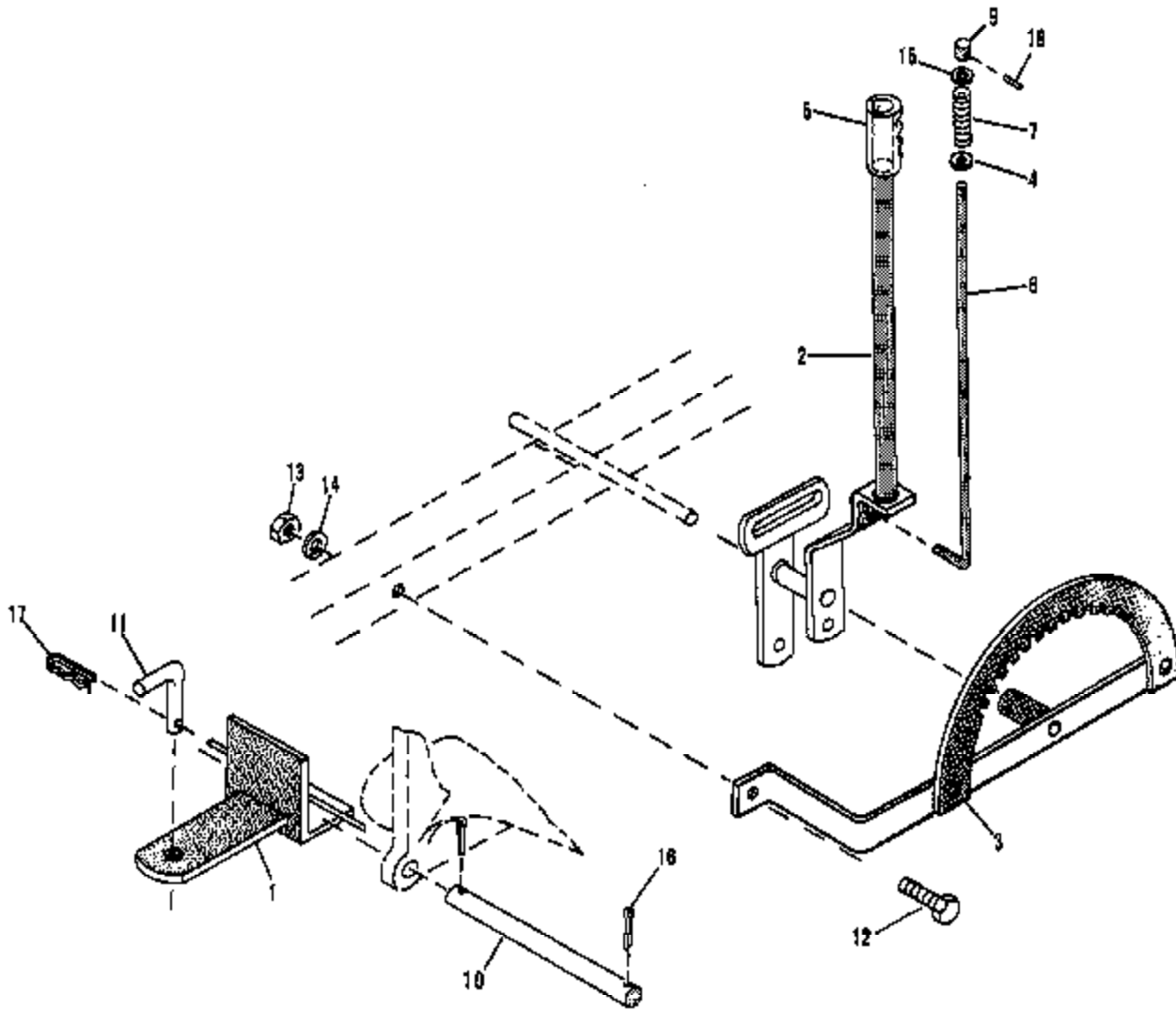


TRANSMISSION AND DIFFERENTIAL

Ref. No.	Part No.	Quan.	Description	Ref. No.	Part No.	Quan.	Description
1	107903	1	Gear Cluster W/Bushing	46	315391	2	Seal, Axle Shaft Oil
2	107905	1	Reduction Gear and Pinion W/Bushing	49	315425	2	Gasket, Transmission Housing
3	107906	1	1st and Reverse Shift Fork Assembly	50	315426	1	Gear, 2nd and 3rd
4	107907	1	2nd and 3rd Shift Fork Assembly	51	315784	AR	Washer, Input Shaft Shim
5	112682	1	Shift Lever Assembly	52	316019	1	Washer, R.H. Bearing Side Input Shaft
6	112479	1	L.H. Transmission Cover Assembly W/Bearing	53	316156	2	Bushing, Cluster Gear
7	112478	1	R.H. Transmission Cover Assembly W/Bearing	54	316197	4	Stud Gear Case R. and L. Hand
8	112474	1	Transmission Housing and Stud Assembly	55	316221	2	Plug, Transmission Housing
9	108522	1	Gear, Input W/Bushings	56	400258	2	Screw, 3/8-16 x 3/4 Hex Hd. Cap
10	107899	2	Gear, Reverse Assembly, W/Bushings	57	401012	15	Screw, 5/16-18 x 1-1/8 Hex Hd. Cap
11	109453	1	Differential Gear and Pin Assembly	58	414501	1	Screw, 3/8-16 x 1" Socket Hd. Full Dog Pt. Set
12	204166	1	Drum, Brake	59	443108	6	Nut 5/16-24 Hex
14	313250	1	Bearing, Needle Input	60	443110	1	Nut 3/8-16 Hex
15	315257	1	Seal, Input Shaft Oil	61	443116	2	Nut, 1/2-13 Hex
17	471860	1	Bushing Reducer, 1/2 x 1/8	62	445134	16	Lockwasher, 5/16 x .125 x .078
18	109454	1	Axle R.H. Assembly	63	446152	2	Lockwasher, 1/2 x .171 x .129
19	109455	1	Axle L.H. Assembly	64	458113	1	Ring, #5000-185 Truarc Internal Retainer
20	315267	1	Knob Shifting Lever	65	458409	1	Ring, National #TRC 829 Retainer
21	325726	1	Spring, Snift Lever Tension	66	107919	1	Oil Filler Plug, Air Vent and Dipstick Assen.
22	315269	1	Gear, 1st and Reverse	68	461363	2	Pin, 1/8 x 1" Roll
23	315270	1	Pinion, 2nd Reduction Splined	70	461361	2	Pin, 1/8 x 7/8 Roll
24	315271	1	Shaft, 2nd Reduction Splined	72	463109	1	Key, Brake Pulley
25	315276	2	Shaft, Roller Splined Input	73	463123	2	Key, Morton #BP-708
26	315279	1	Bushing, Input Gear	74	465004	2	Ball, 1/4 Dia. Steel
27	315280	2	Shaft, Cluster	75	471231	2	Fitting, 1/8 Grease
28	315282	1	Bushing, Cluster Shaft Pinion	77	471224	1	Fitting, 1/8 Pipe Thread 67-1/2° Angle Zerk Grease
29	315283	1	Bushing, Reverse Gear	78	445239	1	Nut - Tinnerman - Special
31	315285	4	Pin, Reverse Gear	79	446146	6	Lockwasher, 7/16 x .156 x .109
33	315287	1	Gear, Spider	80	443116	6	Nut, 7/16-20 Hex
34	315288	1	Key, Input Pulley Morton #BP-606	81	415521	1	Screw, 5/16-18 x 3/8 Socket Hd. Knurled Cap Pt. Set
35	323878	4	Bearing, Input Gear	82	323828	2	Washer, Special
36	315292	1	Spacer, Spider Gear	84	400374	4	Screw, 7/16-20 x 1-1/2 Hex Hd. Cap
37	315293	1	Rail, 2nd and 3rd Shift	85	204159	1	Hub Differential
38	315294	1	Rail, 1st and Reverse Shift	86	444730	4	Nut, 7/16-20 Hex Gripco
39	315296	2	Spring, Shift Rail Stop	87	446140	2	Lockwasher, 3/8 Med.
40	315297	2	Bearing, Axle Outer	88	400200	1	Screw 5/16-18 x 2-1/2 Hex Hd. Cap
41	315304	1	Bearing, Axle Inner	89	443806	1	Nut, 5/16-18 Hex Jam
42	315305	1 & AR	Washer, L.H. Input Shaft Thrust	90	400372	2	Screw, 7/16-20 x 1-1/4 Hex Hd. Cap
43	315306	3	Washer, Input Shaft R.H. Bearing Side				
44	315324	1	Washer, Cluster Shaft Thrust				
45	315362	1	Boot, Shift Lever Dust Shield				
		1	Pin, Shift Rail Retainer				

AR - As Required.

ALWAYS GIVE SERIAL NUMBER WHEN ORDERING PARTS



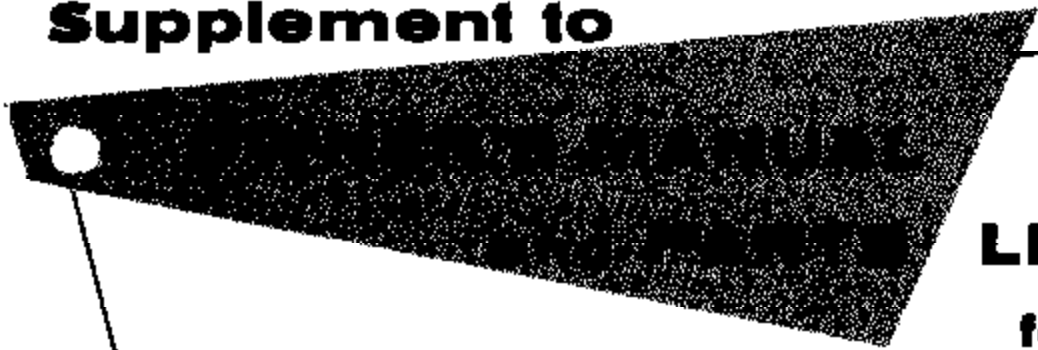
TOOL LIFT ASSEMBLY

Ref. No.	Part No.	Quan.	Description	Ref. No.	Part No.	Quan.	Description
1	112187	1	Hitch Assembly - Fix	12	400188	1	Screw, 5/16-18 x 1" Hex Hd. Cap
2	112698	1	Tool Lift Lever Assembly	13	443106	1	Nut, 5/16-18 Hex
3	112517	1	Lift Sector Assembly	14	446134	1	Lockwasher, 5/16 x .125 x .075
4	310690	1	Collar	15	455017	1	Washer, 5/8 O.D. x 5/16 I.D. x 1/16 Thk.
5	315342	1	Grip	16	480082	2	Cotter Pin, 1/4 x 1-1/4
6	315343	1	Rod, Lift Lever Plunger	17	460312	1	Pin, 1/4 x 1-1/4 Cotter - Hitch Rod Mounting
7	315344	1	Spring, Lift Lever Plunger	18	461355	1	Pin, 1/8 x 1/2 Roll
8	315349	1	Plunger, Lift Lever				
10	315357	1	Rod Hitch, 3/4 Dia. x 8-5/16 Long				
11	315364	1	Pin, Hitch				

ALWAYS GIVE SERIAL NUMBER WHEN ORDERING PARTS



Supplement to

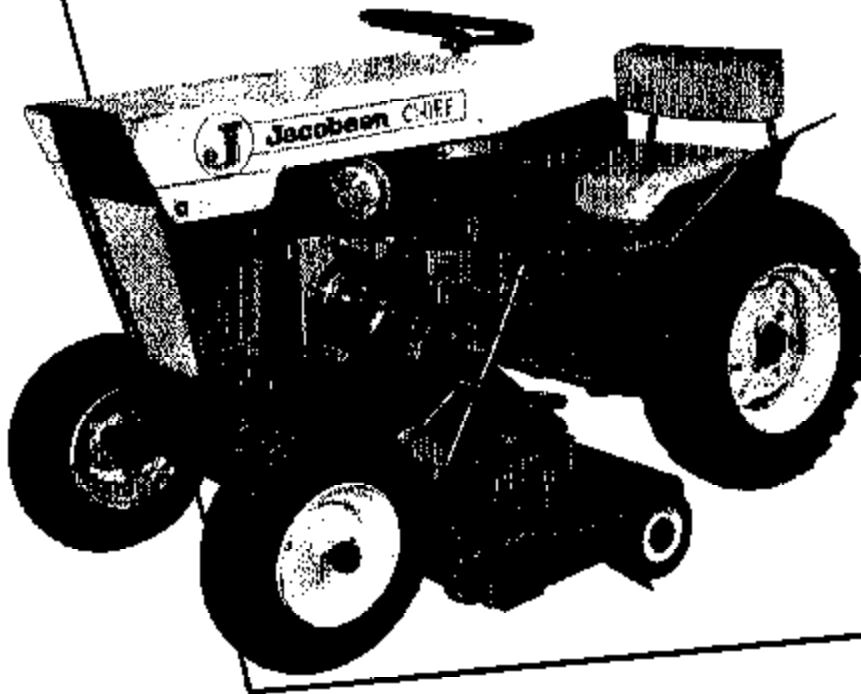


LIST
for

Jacobsen

CHIEF

**Lawn
and
Garden
Tractor**



NO. 53035 10H.P.
Serial No. 1601 and Up

SUPPLEMENTARY MANUAL FOR CHIEF TRACTOR MANUALS NOS, 327365 AND 327364

OWNER'S MANUAL AND PARTS LIST FOR CHIEF TRACTOR NUMBER 53035 10 H.P.
SERIAL NO. 1601 AND UP

NOTE; THIS MANUAL MUST BE ENCLOSED WITH CHIEF TRACTOR MANUALS
NOS, 327365 AND 327364.

CHIEF TRACTOR NUMBER 53035 -- IS A 10 H.P. DELUXE TRACTOR WHICH IS SIMILAR
TO THE CHIEF TRACTOR NUMBER 53028 BUT WITH ADDED ACCESSORIES AS STAND-
ARDEQUIPMENT. THIS SUPPLEMENTARY MANUAL WILL INDICATE THE DIFFERENCE
BETWEEN THE TWO TRACTORS NO. 53035 10 H.P. AND NO. 53028 8 H.P.

JACOBSEN MANUFACTURING COMPANY

RACINE, WISCONSIN

PART NO. 327795

All information found in the Owner's Manual No. 327385 will pertain to Tractor No. 53028. All information applying to engine operation must be followed for proper starting in various temperature conditions. For information pertaining to engine maintenance and service refer to engine manual located in literature bag. Disregard engine specifications found in Owner's Manual 327385. The following specifications apply to the Kohler K-241-S, 10 H.P. engine.

SPEED		HORSE POWER	
@ 2200 R.P.M. Engine Speed	@ 3200 R.P.M. Engine Speed	@ 3600 R.P.M. - 10 H.P.	
1st Gear - 1.29 M.P.H.	1st Gear - 1.88 M.P.H.	Type 4-cycle Single Cylinder Air Cooled.	
2nd Gear - 3.04 M.P.H.	2nd Gear - 3.04 M.P.H.	Oil Capacity See Kohler Engine Manual.	
3rd Gear - 4.81 M.P.H.	3rd Gear - 6.70 M.P.H.	Fuel Capacity 1-1/4 Gal. Regular Grade Gasoline.	
Reverse - 1.62 M.P.H.	Reverse - 2.95 M.P.H.	Fuel Filter Sediment Bowl and Fuel Filter.	

The following parts are discarded from the "Parts List" (Part No. 327364) and are not used on No. 53028 Tractor. To eliminate the possibility of error when ordering parts, the following part numbers should be crossed out in the "Parts List". The part numbers in this manual (Part No. 327368) to be used in place of discarded parts and for new parts not shown.

Ref. No.	Part No.	Qty.	Ref. No.	Part No.	Qty.	Ref. No.	Part No.	Qty.	Ref. No.	Part No.	Qty.
	Page 3			Page 9			Page 11			Page 14	
1	112477	1	1	112656	1						
6	112880	1	3	402146	1	4	107842	1	2	112698	1
29	403632	1	4	446116	1	5	107846	1	3	112517	1
47	325822	1	5	444312	1	8	112852	1	4	310890	1
73	316775	1	6	112654	1	15	308949	A.R.	5	315342	1
			7	325819	1	17	815402	1	6	315343	1
			8	402058	1	18	315404	1	7	315344	1
	Page 7		9	455008	1	19	315420	1	9	315349	1
			10	446110	1	22	400184	2	15	455017	1
1	204188	1	3	204222	1	23	400190	2	18	461355	1
3	107852	1	8	315328	1	25	400252	1			
4	112477	1	10	315375	1	28	400282	1			
7	315402	1	13	315223	1	30	443106	3			
9	204188	1	20	400272	1	35	448134	3			
19	315339	1				36	446140	2			
20	325882	1				38	452008	1			
22	315375	1									
25	315404	1									
28	315471	1									
31	400188	1									
34	400258	3									
49	446140	3									
55	315310	1									
57	401166	1									
59	113729	1									

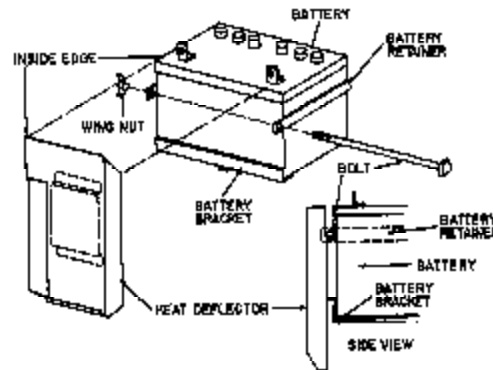
The following parts are not illustrated in this manual. Parts are very similar to the parts illustrated in the "Parts List" (Part No. 327364). When ordering replacement parts use new numbers listed below.

Part No.	Qty.	Description
113024	1	Frame Assembly
113036	1	Front Cowling Assembly
113031	1	Throttle Control Lever Assembly
113032	1	Choke Control Lever Assembly
303451	2	Clip, Choke Control Mounting
327713	1	Support, Choke Wire Housing Mounting on Engine
446126	1	Lockwasher, 1/4 Med. - Choke Control Clip to Support Mtg.
402222	1	Screw, 1/4-20 x 1/2 Rd. Hd. Machine - Choke Control Clip to Support Mtg.
443102	1	Nut, 1/4-20 Hex. - Choke Control Clip to Support Mtg.
204268	1	Manifold, Exhaust
327712	1	Line - Fuel
326240	1	Hex Wrench, Oil Drain Plug

BATTERY AND HEAT DEFLECTOR INSTALLATION

The 12 volt battery and electrolyte are cartoned and steel banded to the frame at the base of the dashboard. The heat deflector, bolt and wing nut are packed in the tool box under the tractor seat.

1. Install the battery in bracket with terminals towards the front of the tractor.
2. Install the lip of the heat deflector between the battery and battery bracket (see illustration). Position the inside edge of the heat deflector even with the inside edge of the battery.
3. Insert long bolt through holes in battery retainer and in front of upper lip on heat deflector.
4. Fasten bolt securely with wing nut.
5. To continue installation, refer to page 6 of Owner's Manual 325610, second column under paragraph "To Install" and continue terminals and electrolyte installation.



HYDRAULIC LIFT

HOW TO ORDER PARTS FOR THE HYDRAULIC LIFT

All parts having the prefix H.W. before the part number or the part numbers 12A75-45J and 4ACWH-J1 must be ordered from the nearest Hein-Werner Service Station (list enclosed). All parts having six digit numbers must be ordered from your Jacobsen Service Distributor (list enclosed). Your Jacobsen Dealer will place the Hein-Werner service order for you if you wish.

HYDRAULIC PUMP BELT ADJUSTMENT

Remove pump belt guard from pump. Loosen 3 screws securing pump to pump bracket - two in front and one in rear. Rotate the pump assembly clockwise until proper belt tension is made (the correct belt tension is measured with 10 lbs. pressure at center of belt. This will depress the belt approximately 1/4"). Tighten the nuts in the bracket to hold adjustment. Reinstall pump belt guard so that rear edge of belt guard is parallel to panel.

TOOL LIFT ADAPTER

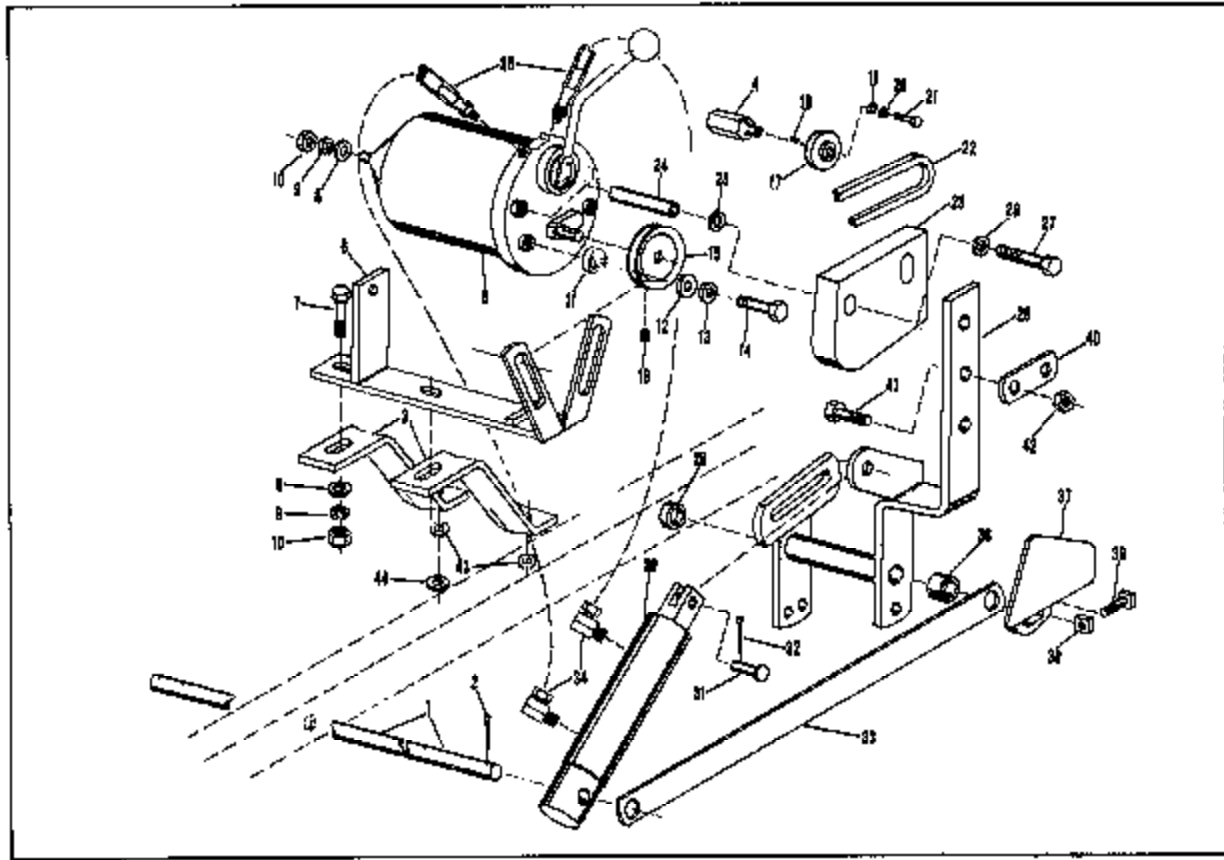
The Chief Tractor Snow Auger, Dozer Blade, and Front Reel Mower will require the use of the Tool Lift Adapter (Ref. 40 on page 7) which is included with tractor. Mount the adapter to the Lift Arm (outside) as shown with the screw and locknut furnished in bag of parts. The Lift Rod or bar attaches to the other hole in the adapter.

OPERATION

OPERATION (Engine Running). The hydraulic accessory has a double acting cylinder. The fingertip control is spring loaded and will automatically return to center or neutral position. Implements may be raised to any desired height and will remain in this position for extended time with the engine stopped or with the fingertip control in the "Neutral" position.

REAR TOOL LIFT

REAR TOOL LIFT. The Jacobsen Chief Tractor is furnished with a fixed hitch for pulling tractor accessories, a Tool Lift Hitch Accessory is available for raising and lowering a plow, cultivator, etc. If an accessory is used which requires a tool lift hitch, the fixed hitch must be replaced with the Jacobsen Tool Lift Accessory. Order this accessory from your Jacobsen Dealer.



HYDRAULIC LIFT ASSEMBLY

Ref. No.	Part No.	Qty.	Description
1	HW-6370	1	Bar - Cylinder Mounting
2	HW-6040	4	Pin - 5/32 x 1" Cotter
3	327704	2	Support - Oil Pump Bracket
4	326204	1	Extension - Shaft P.T.O. R.H.
5	A4CWH-J2	1	Hydraulic Pump Assembly
6	113740	1	Pump Support Assembly
7	400266	2	Screw - 3/8-16 x 1-1/2 Hex Hd. Cap
8	HW-6204	3	Washer - 3/8 SAE
9	HW-6140	3	Lockwasher - 3/8 Med.
10	HW-6110	3	Nut - 3/8-16 Hex
11	327521	2	Spacer - Hydraulic Pump
12	326213	2	Washer - Hydraulic Pump Mtg.
13	HW-6134	2	Lockwasher - 5/16 Med.
14	400190	2	Screw - 5/16-18 x 1-1/4 Hex Hd. Cap
15	HW-6379	1	Pulley - Pump Drive
16	HW-6626	1	Screw - 5/16-18 x 1/4 Knurled Cup Point Set
17	HW-6360	1	Pulley - Hydraulic Pump
18	HW-6367	1	Key - Hydraulic Pulley Mtg.
19	452006	1	Washer - 5/16 SAE
20	HW-6134	1	Lockwasher - 5/16 Med.
21	HW-6104	1	Screw - 1/4-20 x 1/2 Hex Hd. Cap
22	326253	1	Belt - Hydraulic Pump Drive
23	113739	1	Belt Guard Assembly
24	327517	2	Spacer - Belt Guard Mtg.

Ref. No.	Part No.	Qty.	Description
25	452008	2	Washer - 5/16 SAE
26	HW-6134	2	Lockwasher - 5/16 Med.
27	400200	2	Screw - 5/16-18 x 2-1/2 Hex Hd. Cap
28	113055	1	Tool Lift Lever Assembly
29	HW9346	1	Spacer - Tool Lift Lever Mtg.
30	12A75-45J	1	Cylinder - Hydraulic
31	HW-6366	1	Pin - Cylinder to Lift Arm Mtg.
32	HW-6038	1	Pin - 5/32 x 1" Cotter
33	HW-3215	1	Bar - Stabilizer
34	HW-6459	2	Elbow - 90° Hose to Cylinder Mtg.
35	HW-6709	2	Hose Assembly - Pump to Cylinder
36	HW-63621	1	Spacer - Tool Lift Lever Mtg.
37	HW-6172	1	Foot Guard
38	HW-6508	1	Nut - 5/16-18 Sq.
39	HW-6020	1	Screw - 5/16-18 x 1" Sq. Hd. Cup Point Set
40	HW-63691	1	Adapter - Tool Lift (Snow Auger)
41	400262	1	Screw-3/8-16 x 1" Hex Hd Cap
42	HW-6724	1	Nut - 3/8-16 Hex Gripo Center-Loc
43	452011	2	Washer - 3/8 SAE
44	310641	1	Washer

HYDRAULIC COMPONENTS

DESCRIPTION

The Hydro-Unit system is designed to give you hydraulic power for your attachments with fingertip control eliminating the need for the manual lift lever. This unit is a completely self-contained hydraulic gear pump, directional control valve, and oil reservoir; with a companion hydraulic cylinder and hoses connecting the power unit to the cylinder. The unit has a built-in safety valve to eliminate overloading of the hydraulic system and tractor attachments.

PROPER OIL FOR HYDRAULIC SYSTEMS

Use Mobil Oil DTE LC oil, or equal. If this is not readily available, you may use a good quality SAE 10W engine oil. This system holds approximately 3 pints.

OIL FILLING INSTRUCTIONS

Remove vent plug directly behind control handle. Remove filler plug below the work port (This plug may be on either side of the pump body,) and fill through this hole to the level of this hole.

Replace vent plug and filler plug.

Start engine and test hydraulic system.

Lubricate moving parts with a few drops of SAE 30 oil every 10 hours of use.

Check for oil leaks at hose connections.

After unit has been checked for operation and the system filled with fluid, refill oil reservoir to proper level.

IMPORTANT:

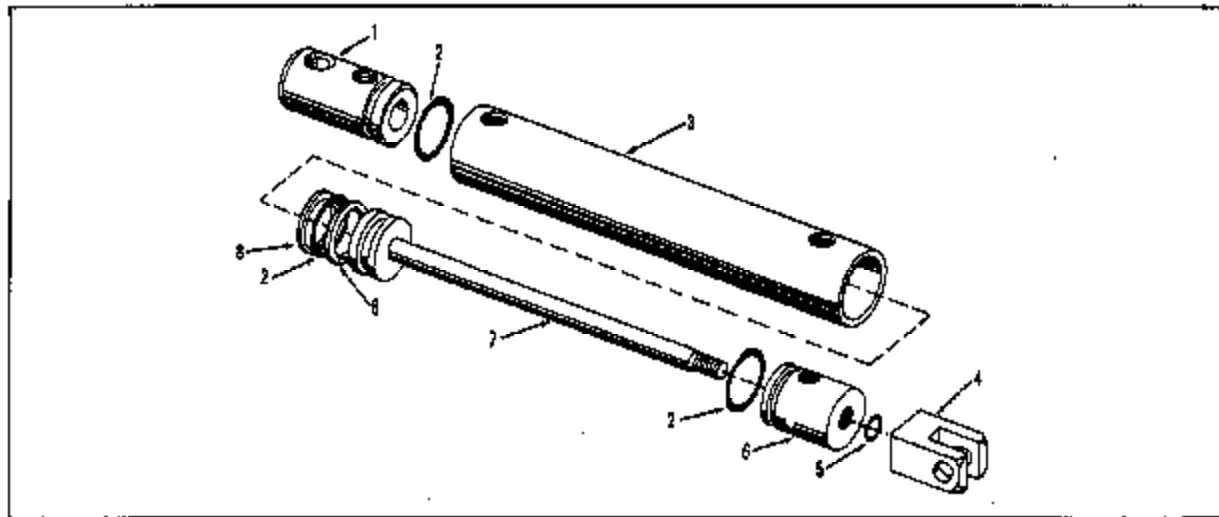
WARRANTY VOID IF UNIT IS RUN WITHOUT OIL.

OPERATION

To familiarize yourself with the operation of the Hydro-Unit start the tractor engine and adjust the throttle to fast idle.

To raise the tractor attachment, pull the Hydro-Unit handle towards you when you are seated on the tractor. Upon release of the handle it will return to the center or neutral position.* The attachment will "hold" in whatever position you desire depending upon when you release the handle. To lower the attachment simply push the handle away from you. The handle will again return to neutral when you release it.

*(Note) A slightly sluggish action of the control lever returning to neutral may exist during the break-in period. A few hours of running time will eliminate this - no adjustments are necessary.



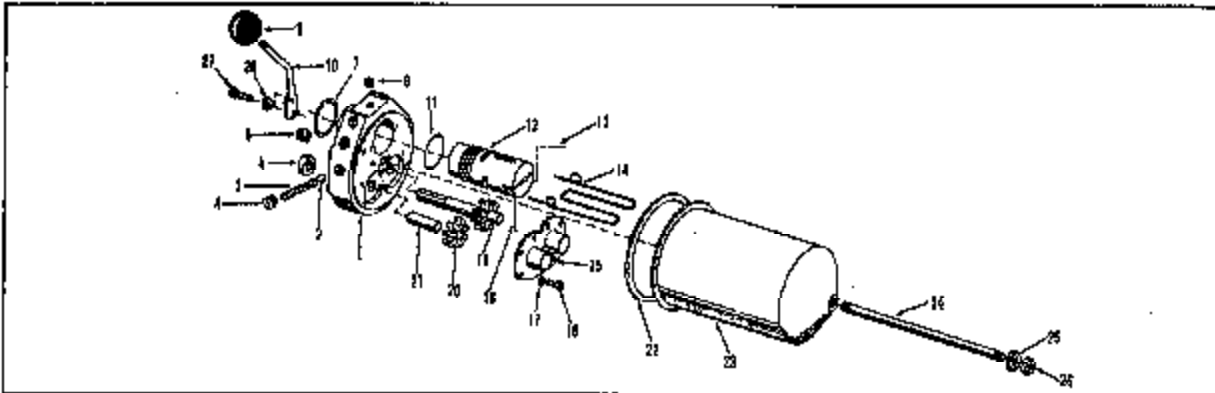
CYLINDER ASSEMBLY

Ref. No.	Part No.	Qty.	Description
	12A75-46J		Complete Cylinder Assembly
1	HW-4845	1	Head
2	HW-1450	3	"O" Ring
3	HW-4846	1	Tube
4	HW-4847	1	Clevis

Ref. No.	Part No.	Qty.	Description
5	HW-1456	1	"O" Ring
6	HW-4848	1	Guide
7	HW-4849	1	Rod & Piston Assembly
8	HW-1457	2	Washer - Back Up

TROUBLE SHOOTING CHART

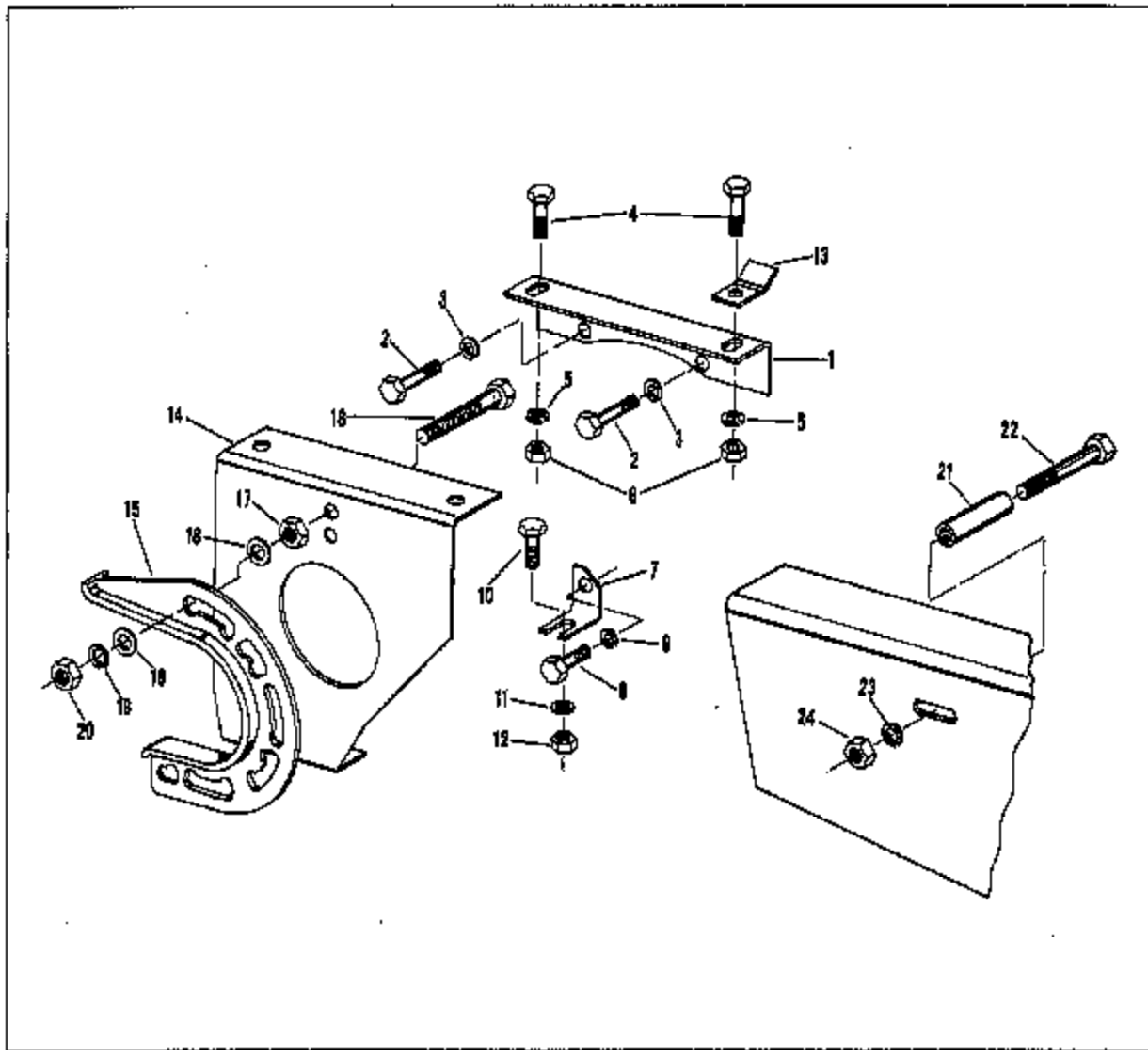
TROUBLE	PROBABLE CAUSE	REMEDY
Slow action with tractor engine at operating speed.	Belt Slipping	Tighten belt to proper tension.
	Improper type of oil	Replace oil.
	Low oil supply	Fill oil to proper level.
Attachment not holding in raised position.	Oil leak in system	Check all hose connections.
	Improper oil	Fill system with correct oil viscosity.
Excessive noise or chattering	Insufficient oil	Fill with oil to its proper level.
	Unit run at too high an R.P.M.	Reduce shaft speed to recommended speed as originally equipped.
	Improper oil	Drain and refill system with correct oil
Excessive Heating	Restriction in the system, such as kinked or pinched lines.	Replace defective hoses. Straighten kinked hoses and check fittings for obstructions.
	Insufficient oil	Fill to proper oil level.



PUMP ASSEMBLY

Ref. No.	Part No.	Qty.	Description
	A4CWH-J2		Complete Hydro-Unit
1	HW-4880	1	Body
2	HW-4881	1	Ball - Relief
3	HW-4892	1	Spring - Relief
4	HW-4889	1	Plug - Relief
5	HW-1447	1	Seal - Shaft
6	HW-1448-2	1	Plug - Filler Hole
7	HW-1448	1	Ring - Snap
8	HW-1448	1	Plug - Vent Hole
9	327723	1	Knob - Handle
10	327722	1	Handle
11	HW-1465	1	"O" Ring
12	HW-4886-2	1	Valve - Spool
13	HW-1482	1	Pin - Roll

Ref. No.	Part No.	Qty.	Description
14	HW-4887	1	Spring - Return
15	HW-4888	1	Cover
16	HW-1461	8	Screws - Cover
17	HW-1353	8	Lockwasher
18	HW-1350	1	Pin - Roll
19	HW-4841	1	Drive Shaft Assembly
20	HW-4839	1	Gear - Idler
21	HW-4840	1	Shaft - Idler
22	HW-4842	1	Gasket
23	HW-4843	1	Reservoir
24	HW-4844	1	Stud
25	HW-1453	1	Washer - Combination
26	HW-1470	1	Nut - Jam
27	400106	2	Screw - 1/4-20 x 5/8 Hex Hd
28	448128	2	Lockwasher - 1/4 Med.



PULLEYS AND GUARDS

Ref. No.	Part No.	Qty.	Description
1	326246	1	Bracket - Front Guard-Upper
2	400328	2	Screw - 7/16-14 x 5/8 Hex Hd. Cap
3	448148	2	Lockwasher - 7/16 Med.
4	400182	2	Screw, 5/16-18 x 5/8 Hex Hd. Cap
5	446134	2	Lockwasher, 5/16 Med.
6	443106	2	Nut - 5/16-18 Hex
7	326246	1	Bracket - Front Guard-Lower
8	400328	1	Screw - 7/16-14 x 5/8 Hex Hd. Cap
9	448148	1	Lockwasher - 7/16 Med.
10	400182	1	Screw - 5/16-18 x 5/8 Hex Hd. Cap
11	446134	1	Lockwasher - 5/16 Med.
12	443106	1	Nut - 5/16-18 Hex

Ref. No.	Part No.	Qty.	Description
13	326277	1	Plate - Wire Harness Retainer
14	113051	1	Front Guard Assembly
15	204265	1	P.T.O. Belt Retainer
16	400190	1	Screw - 5/16-18 x 1-1/4 Hex Hd. Cap
17	443806	1	Nut - 5/16-18 Hex Jam
18	463009	2	Washer - 11/16 OD x 11/32 ID x 0.080/0.051 thk
19	446134	1	Lockwasher - 5/16 Med.
20	443106	1	Nut - 5/16-18 Hex
21	326210	1	Spacer - Belt Guard Mtg.
22	400206	1	Screw - 5/16-18 x 4" Hex Hd. Cap
23	446134	1	Lockwasher - 5/16 Med.
24	443806	1	Nut - 5/16-18 Hex Jam

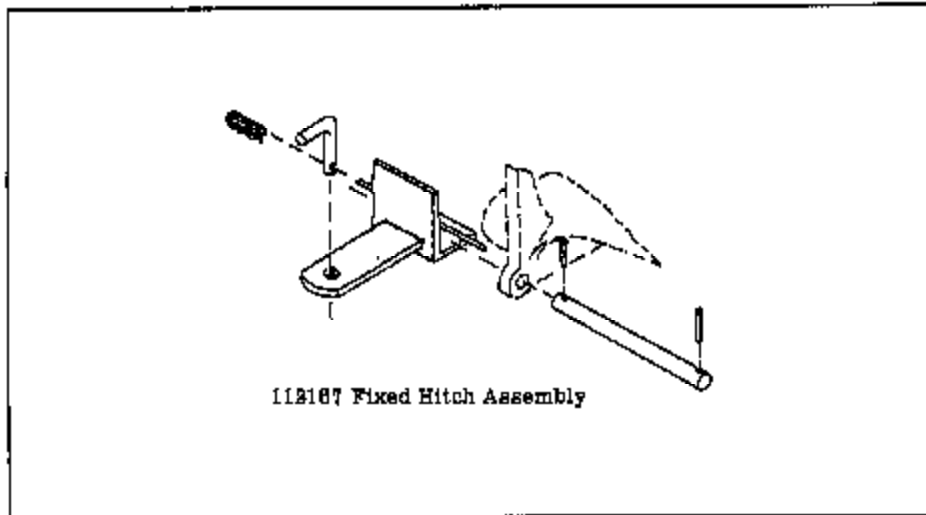
Ref. No.	Part No.	Qty.	Description
17	400188	1	Screw - 5/16-18 x 1" Hex Hd. Cap
18	443106	1	Nut - 5/16-18 Hex
19	400188	1	Screw - 5/16-18 x 1" Hex Hd. Cap
20	400190	2	Screw - 5/16-18 x 1-1/4 Hex Hd. Cap
21	446134	2	Lockwasher - 5/16 Med.
22	443106	2	Nut - 5/16-18 Hex.
23	113034	1	Start./Gen. Assembly
24	204267	1	Pulley - Start./Gen.
25	326226	1	Brace - Belt Guard
26	326227	1	Belt - Start./Gen.
27	402224	1	Screw - 1/4-20 x 5/8 Rd. Hd. Mach
28	446128	3	Lockwasher - 1/4 Med.
29	452004	3	Washer - 1/4 SAE
30	443102	1	Nut - 1/4-20 Hex
31	402222	2	Screw - 1/4-20 x 5/8 Rd. Hd. Mach
32	113630	1	Heat Deflector on Storage Battery
33		1	Kohler Engine Belt Guard (Order from Kohler Co.)

Ref. No.	Part No.	Qty.	Description
1	113025	1	Starter Cables & Coil Harness
2	326233	1	Bracket - Start./Gen. Adjusting Strap
3	113033	1	Bracket Assembly - Start./Gen.
4	446140	1	Lockwasher - 3/8 Med.
5	452008	1	Washer - 3/8 Std.
6	400266	1	Screw - 3/8-16 x 1-1/2 Hex Hd. Cap
7	446140	2	Lockwasher - 3/8 Med.
8	452008	2	Washer - 3/8 Std.
9	400262	2	Screw - 3/8-16 x 1" Hex Hd. Cap
10	326232	1	Support - Start./Gen. Adjusting Strap
11	400262	1	Screw - 3/8-16 x 1" Hex Hd. Cap
12	452008	1	Washer - 3/8 Std.
13	446140	1	Lockwasher - 3/8 Med.
14	443110	1	Nut - 3/8-16 Hex
15	326228	1	Link - Start./Gen. Adjusting
16	446134	1	Lockwasher - 5/16 Med.

FIXED HITCH

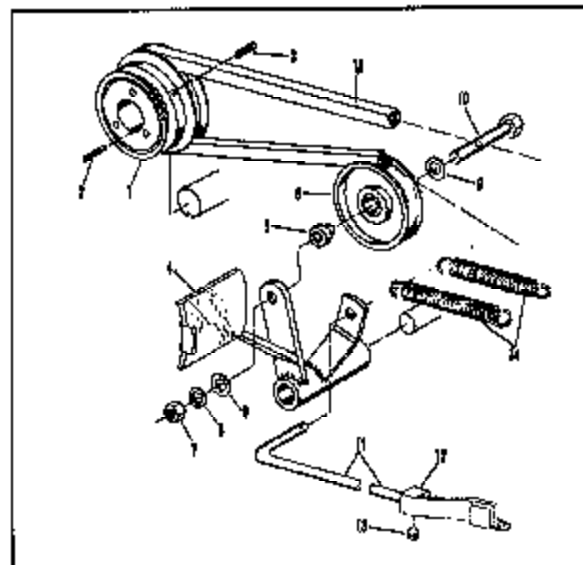
The standard Fixed Hitch is furnished with the 10 H.P. Tractor.

The Tool Lift Hitch, No. 69689 will be sold separately as an accessory. This is used with the 10" plow, disc harrow, tool bar and cultivator. This accessory is available from your Jacobsen Dealer.

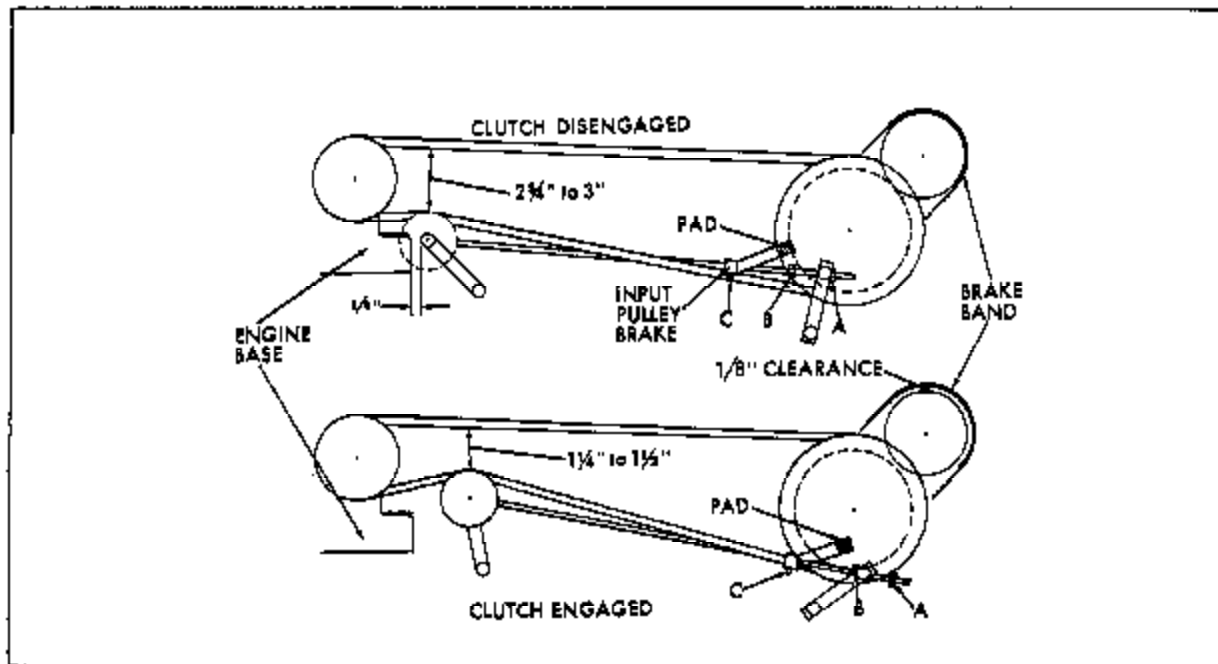


STANDARD FIXED HITCH ON 10 H.P. CHIEF TRACTOR

Ref. No.	Part No.	Qty.	Description
1	204269	1	Pulley - Engine
2	315307	1	Key - 1/4 x 1/4 x 1-5/8 Engine Pulley
3	415527	2	Screw - 5/16-18 x 3/4 Soc. Hd. Knurled Cup Pt. Set
4	113022	1	Brake & Clutch Petal Assy.
5	326208	1	Bracer - Idler Pulley
6	108151	1	Clutch and Idler Pulley
7	443110	1	Nut - 3/8-16 Hex
8	448140	1	Lockwasher - 3/8 Med.
9	453010	2	Washer - 3/8 Flat
10	400268	1	Screw - 3/8-16 x 1-3/4 Hex Hd. Cap
11	326216	1	Rod - Brake
12	108585	1	Brake - Drive Pulley W/ Lining 316797
13	415525	1	Screw - 5/16-18 x 1/4 Knurled Cup Pt. Set
14	315390	2	Spring - Belt Tension
15	326217	1	Belt - Transmission
16	453009	1	Washer - 1 1/32



CLUTCH PEDAL ASSEMBLY AND PULLEYS



BELT and BRAKE ADJUSTMENT

NOTE: Disregard instructions in Owner's Manual Part No. 327386 for Belt and Brake Adjustment on page 13.

The clutch, brake for the rear wheels and the input pulley brake are controlled by the combined brake and clutch pedal located on the left side of tractor.

- I. For the correct operation of the clutch and brake the following conditions must be maintained (see illustration).

WARNING: Do not attempt to check or make adjustments with engine running.

- A. With clutch pedal in the engaged position.
1. The distance between the inner sides of the drive belt should be 1-1/4" to 1-1/2" measured over the clutch idler pulley.
 2. The brake band should be released approximately 1/8" off the brake drum.
- B. With clutch pedal depressed or in the disengaged position.
1. The distance between the inner sides of the drive belt should be 2-3/4" to 3" and the belt released.
 2. The brake band should be tight on the brake drum.
 3. The input pulley brake pad should be fully engaged and tight against the inside flange of the transmission input pulley. This is important to maintain easy shifting of gears.
 4. There should be approximately 1/4" clearance between washers on brake rod and engine base. This additional travel compensates for brake lining wear.

- II. If the preceding conditions are incorrect, make adjustments as follows:

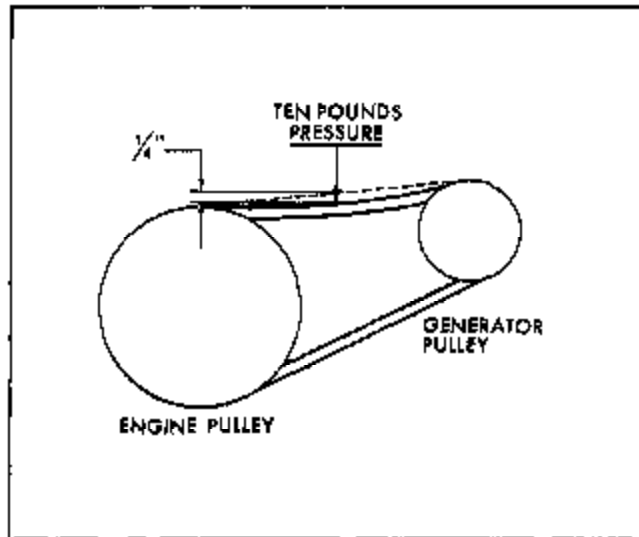
- A. Remove belt guard. Do not remove drive belt from pulleys.
- B. Loosen the 4 engine mounting nuts and move engine back or forward until 1-1/4" to 1-1/2" dimension is obtained with the clutch engaged. Make certain that the engine drive pulley is in alignment with transmission input pulley. Tighten engine securely in place.
- C. With clutch in the engaged position, check brake band release. If clearance is less than 1/8", turn nut "B" counter-clockwise until clearance is approximately 1/8". If clearance is greater than 1/4", turn nut "B" clockwise until clearance is approximately 1/8".
- D. Depress clutch pedal until brake band is tight on drum. Adjust nut "A" until 2-3/4" to 3" dimension is obtained over clutch idler pulley. Check that a minimum of 1/4" clearance between brake rod washers and engine base is maintained. If less than 1/4" clearance, turn nut "A" clockwise to obtain proper clearance.
- E. Loosen set screw "C" and adjust input pulley brake so that brake pad is fully engaged on the inside flange of the input pulley. After adjustment has been made, tighten set screw "C" securely.
- F. Reinstall belt guard and check operation of clutch and brake.

BELT AND BRAKE ADJUSTMENT (CONT)

If after extended use, the drive belt has stretched so that the preceding adjustment cannot be made, the belt must be replaced. A new belt of correct length must be used.

To compensate for brake lining wear, adjust nut "A" as indicated in paragraph C. Replace brake band and lining when excessive wear is observed.

To maintain easy shifting of gears, refer to paragraph E for transmission input pulley brake adjustment. Replace input pulley brake when lining is worn out.



GENERATOR DRIVE BELT

To Adjust Generator Drive Belt:

- A. Remove belt guard.
- B. Loosen top and bottom generator mounting screws.
- C. Move generator back or forward until proper belt tension is achieved. The correct belt tension is when a ten pound pressure in the center will depress the belt approximately 1/4". See illustration.
- D. After adjustment has been made, tighten generator mounting screws securely and reinstall belt guard.

NOTE: Periodic inspection of the generator drive belt should be made to maintain proper belt tension. Proper belt tension insures a long belt life.

To Remove and Replace Generator Drive Belt:

- A. Remove belt guard.
- B. Loosen top and bottom generator mounting screws.
- C. Move generator to back until belt can be removed.
- D. Replace with new belt. Refer to instructions C and D under "To Adjust Generator Drive Belt" for belt adjustment.