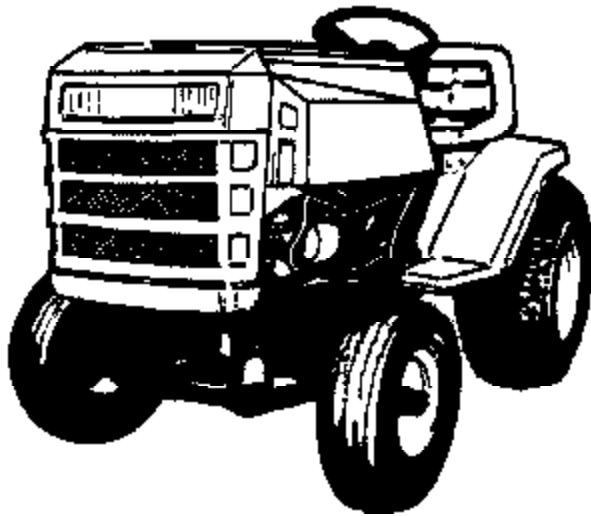


# PARTS LIST

# HYDRO TRACTORS



## MODELS:

GT12H

UT-34002-B

GT16H

UT-34004-B

# JACOBSEN<sup>®</sup>

## HOMELITE



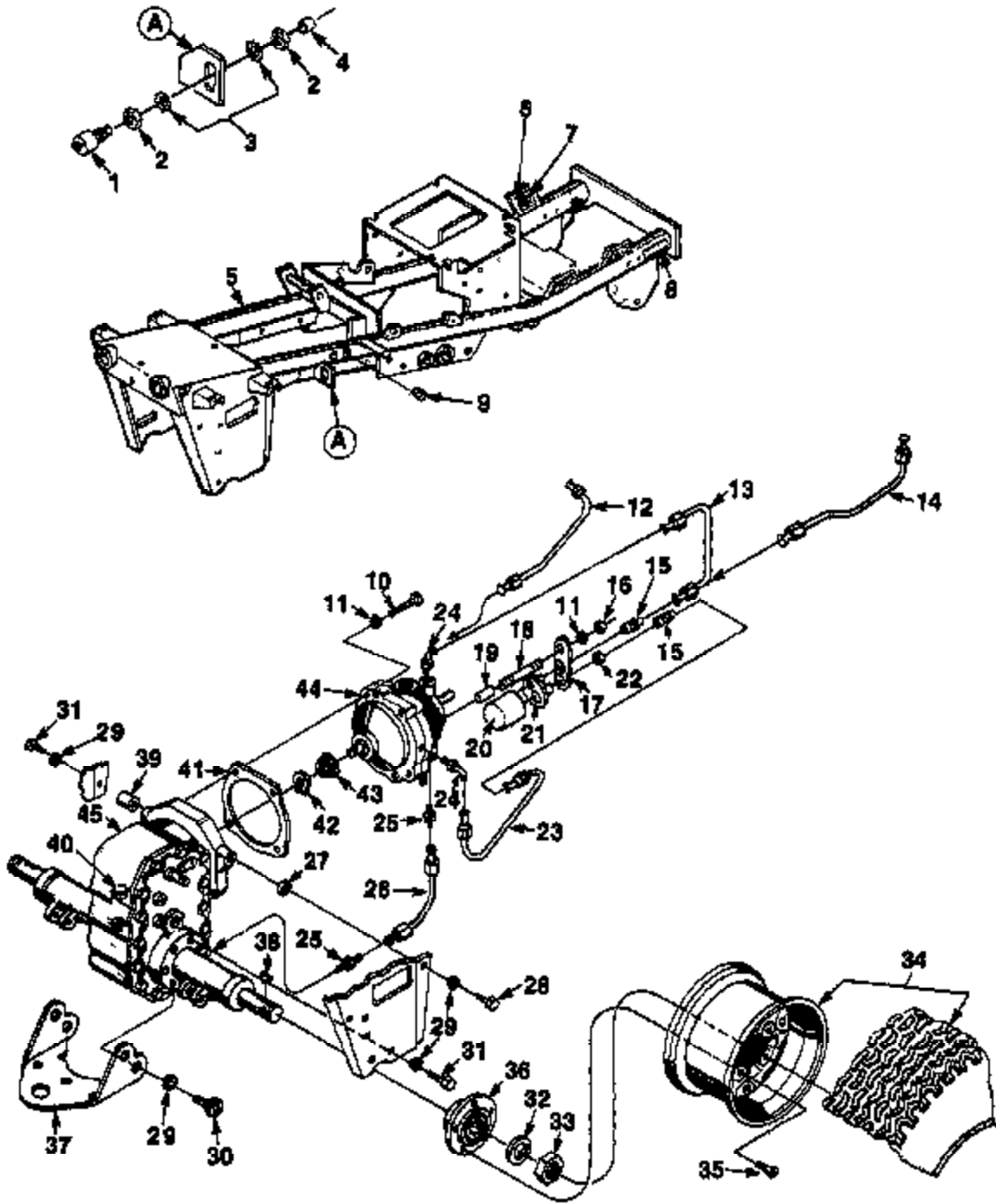
## WARNING

IF INCORRECTLY USED THIS MACHINE CAN CAUSE SEVERE INJURY. THOSE WHO USE AND MAINTAIN THE MACHINE SHOULD BE TRAINED IN ITS PROPER USE, WARNED OF ITS DANGERS, AND SHOULD READ THE ENTIRE MANUAL BEFORE ATTEMPTING TO SET UP, OPERATE, ADJUST OR SERVICE THE MACHINE. ALWAYS KEEP HANDS AND FEET AWAY FROM THE MOWER DECK AND DISCHARGE AREA.

Printed in U.S.A.  
Price .95¢

PART NO. JA-99215-B

**FIGURE 1**  
**FRAME & TRANSAXLE**



## FIGURE 1 PARTS LIST

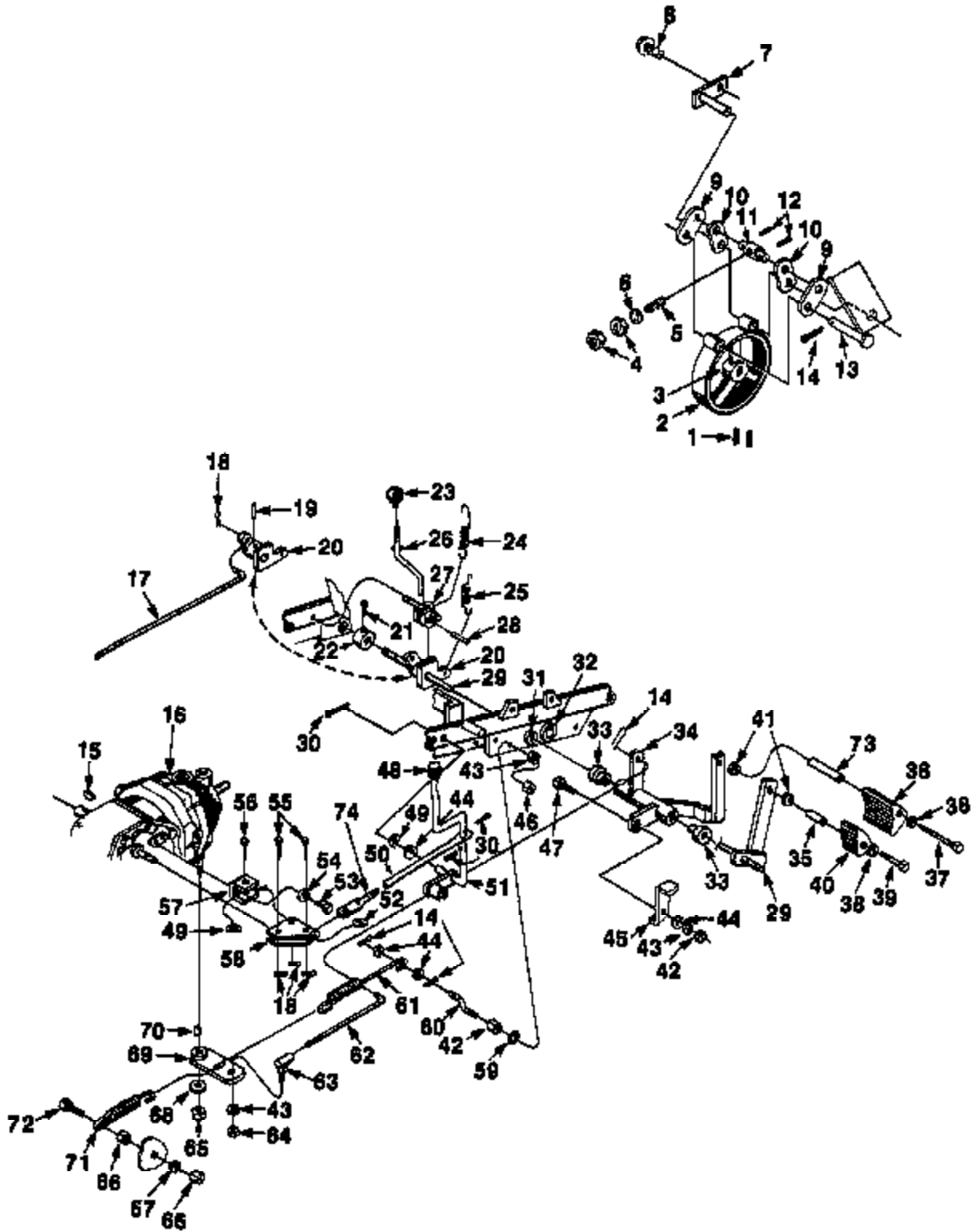
NO.	PART NO.	QTY.	DESCRIPTION
1	JA-12833-8	1	SWITCH- Safety
2	JA-34378-4	2	NUT- Safety switch mounting
3	JA-44702-2	2	WASHER- Lock 5/8 ext. tooth
4	JA-34378-5	1	BOOT- Safety switch
5	JA-11843-1	1	FRAME ASSEMBLY
6	JA-48350-7	18	RIVET
7	JA-35838-4	4	ISOLATOR- Engine
8	JA-88285-4	2	DECAL- Warning (heat)
9	JA-35249-7	1	BUSHING- Giran relief
10	JA-40028-8	3	SCREW- 3/8-16 x 2 3/4 hex hd.
11	JA-44814-2	5	WASHER- Lock 3/8 hvy.
12	JA-11642-8	1	TUBE ASSEMBLY Hydro to valve (16 H.P.)
13	JA-12888-4	1	TUBE ASSEMBLY- Filter hydro (12 H.P.)
14	JA-12410-4	1	TUBE ASSEMBLY- Valve to filter (16 H.P.)
15	JA-35247-7	2	CONNECTOR- Male (tube to filter)
16	JA-44311-0	1	NUT- 3/8-16 hex jam. (Filter to hydro)
17	JA-35247-5	1	BRACKET- Filter mounting
18	JA-35247-8	1	STUD- Filter to hydro mtg
19	JA-35247-4	1	SPACER- Filter mtg.
20	JA-13038-6	1	FILTER ASSEMBLY- Filter to hydro
21	JA-12888-6	1	BASE ASSEMBLY- Filter mtg.
22	JA-44474-2	1	NUT- 3/4-16 hex (filter to bracket)
23	JA-12888-2	1	TUBE ASSEMBLY- Filter to hydro
24	JA-35110-7	2	MALE ELBOW
25	JA-35094-7	2	CONNECTOR- Male 37° flare
26	JA-35094-6	1	TUBE- Hydrogear to transaxle
27	JA-31274-8	A/R	SPACER
28	JA-40040-4	1	SCREW- 1/2-13 x 1 hex hd.
29	JA-44815-4	6	WASHER- Lock, 1/2 hvy.
30	JA-40042-8	2	SCREW- 1/2-13 x 2 3/4 hex hd.
31	JA-40041-0	3	SCREW- 1/2-13 x 1 3/4 hex hd.
32	JA-44818-8	2	WASHER- Lock- 1 1/8 med.
33	JA-44384-2	2	NUT- 1 1/8-12 hex jam
34	JA-16179-7	2	WHEEL & TIRE ASSEMBLY (Rear) (18 H.P.)
	JA-16183-3	2	WHEEL & TIRE ASSEMBLY (Rear) (12 H.P.)
35	JA-31528-8	10	BOLT- Rear wheel
36	JA-21808-0	2	HUB- Rear wheel
37	JA-33081-5	1	DRAW BAR ASSEMBLY
38	JA-48303-8	2	KEY- 1/4 x 1 1/8 woodruff
39	JA-35183-2	1	SPACER
40	JA-35131-3	1	VENT- Air
41	JA-35094-8	1	GASKET- Hydrogear
42	JA-46800-9	1	RING- Retaining
43	JA-33519-8	1	BEVEL PINION
**44	JA-11842-5	1	HYDROGEAR ASSEMBLY
**46	JA-11825-8	1	TRANSAXLE ASSEMBLY

A/R - As Required.

\* - See figure 13 for complete parts breakdown.

\*\* - See figure 12 for complete parts breakdown.

**FIGURE 2**  
**BRAKE & LINKAGE**



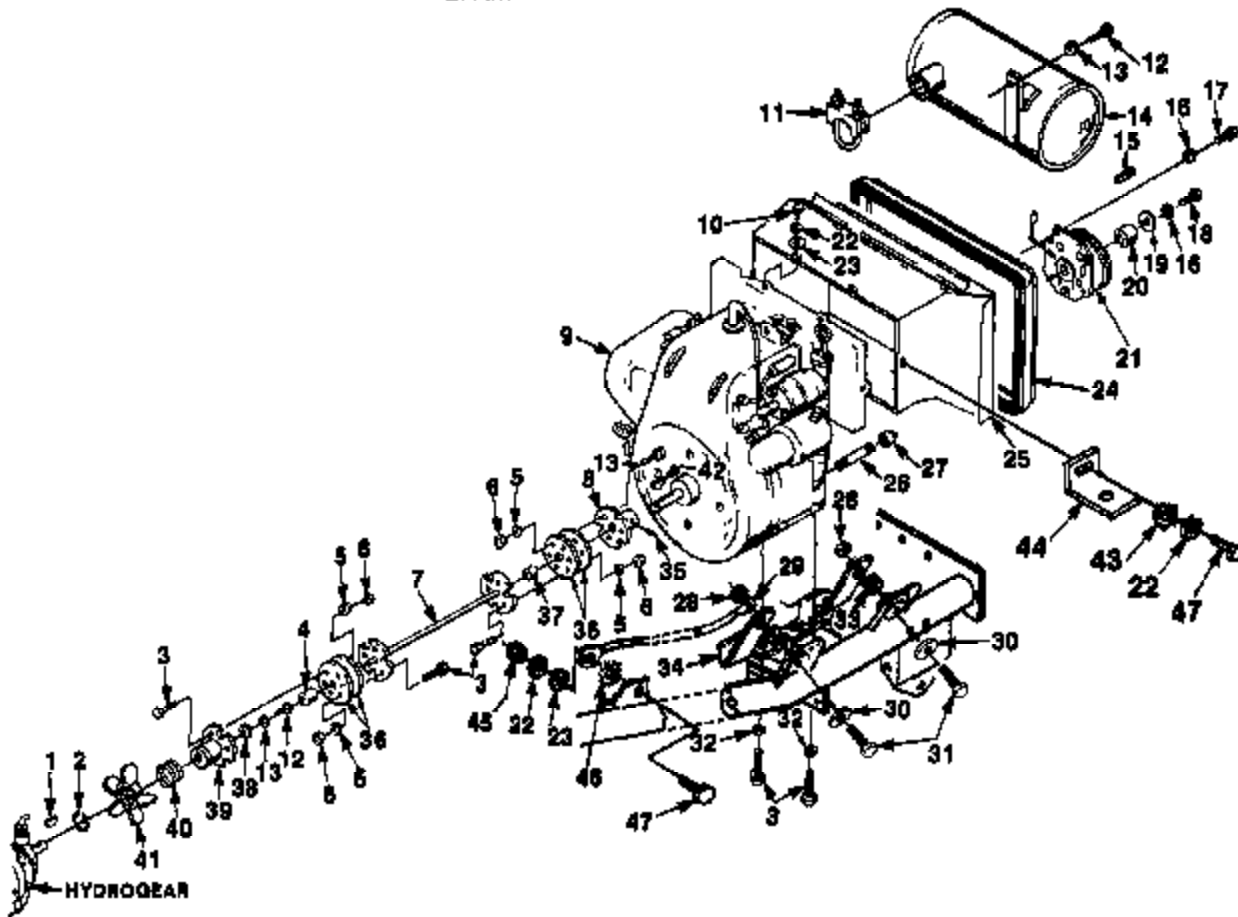
## FIGURE 2 PARTS LIST

NO.	PART NO.	QTY.	DESCRIPTION
1	JA-41551-9	2	SCREW- 5/16-18 x 3/8 nut
2	JA-12878-3	1	BRAKE BAND & LINING ASSEMBLY
3	JA-21806-8	1	DRUM- Brake
4	JA-44471-8	2	NUT- 5/16-18 hex C/lock
6	JA-35195-8	1	SPRING- Compression
8	JA-45300-8	1	WASHER- 5/16 SAE Flat
7	JA-18207-7	1	PIVOT BAND ASSEMBLY
8	JA-40800-2	1	SCREW- 1/4-20 x 1/2 w/washer
9	JA-35839-2	2	LINK- Brake long
10	JA-35839-3	2	LINK- Brake short
11	JA-35839-5	1	PIN- Connecting
12	JA-48187-1	2	PIN- Roll 5/32 x 3/4
13	JA-48140-0	1	PIN- 1/2 x 1 3/4 clevis
14	JA-48002-8	4	PIN- 1/8 x 1 cotter
16	JA-48301-7	1	KEY- 3/16 x 3/4 woodruff
16	JA-11825-6	1	TRANSAXLE ASSEMBLY
17	JA-35870-9	1	ROD- Brake
18	JA-48001-4	4	PIN- 3/32 x 3/4 cotter
18	JA-48138-7	1	PIN- 1/4 x 1 1/4 roll
20	JA-18181-2	1	BRAKE LOCK SECTOR ASSEMBLY
21	JA-41200-4	?	SCREW- 1/4-20 x 3/8 nut
22	JA-34312-0	1	Collar
23	JA-31520-9	1	KNOB- Parking brake
24	JA-35815-3	1	SPRING- Brake lock release
25	JA-34527-2	1	SPRING- Brake pedal return
26	JA-35904-1	1	ROD- Brake lock actuator
27	JA-18208-6	1	BRAKE LOCK PAWL ASSEMBLY
28	JA-48138-7	1	PIN- 1/8 x 5/8 roll
29	JA-19080-2	1	BRAKE ARM ASSEMBLY (18 H.P.)
	JA-13068-5	1	ARM- Brake (12 H.P.)
30	JA-48002-8	3	PIN- 1/8 x 3/4 cotter
31	JA-34613-3	2	BUSHING- Brake shaft pivot
32	JA-35190-8	2	BUSHING- Lift shaft pivot
33	JA-34813-8	2	BUSHING
34	JA-18178-4	1	SPEED CONTROL ASSEMBLY
35	JA-35251-4	1	SPACER- Brake pedal
36	JA-34488-6	1	PEDAL- Hydro
37	JA-40036-0	1	SCREW- 7/16-20 x 4 1/2 hex hd.

NO.	PART NO.	QTY.	DESCRIPTION
38	JA-46301-3	2	WASHER- 7/16
38	JA-40036-8	1	SCREW- 7/16-20 x 3 hex hd
40	JA-34502-0	1	PEDAL- Brake
41	JA-44814-8	2	WASHER- Lock 7/16 hvy.
42	JA-44478-2	2	NUT- 3/8-18 hex C/lock
43	JA-44814-2	3	WASHER- Lock 3/8 hvy
44	JA-46301-1	4	WASHER- Flat 13/32
45	JA-35171-1	1	ARM- Reverse
46	JA-44311-0	1	NUT- 3/8-18 hex jam,
47	JA-40028-2	1	SCREW- 3/8-18 hex hd
48	JA-35183-7	1	KNOB- Shift lever
49	JA-45401-2	2	WASHER- Shakeproof 3/8
50	JA-35053-1	1	ROD- Shift
51	JA-14208-2	1	LEVER ASSY- Hydro shaft
52	JA-45402-8	1	WASHER- Shakeproof
53	JA-40010-8	2	SCREW- 1/4-20 x 5/8 hex hd
54	JA-44813-0	2	WASHER- Lock, 1/4 hvy
55	JA-35214-2	2	PIN
56	JA-48148-7	1	PIN- 3/8 x 1 1/4 clevis
57	JA-35167-3	1	BRACKET- Bell crank mounting
58	JA-33522-7	1	CRANK- Bell
59	JA-44721-6	1	WASHER- Lock 3/8 Int tooth
60	JA-35250-0	1	STUD- Cranked hydro cont. spring mnt.
61	JA-35250-1	1	SPRING- Hydro control
62	JA-33627-2	1	ROD- Speed control
63	JA-31008-9	1	JOINT- Bell
64	JA-44311-2	1	NUT- 3/8-24 hex
65	JA-44478-8	?	NUT- 1/2-13 hex
66	JA-44380-6	2	NUT- 5/16-18 hex
67	JA-44813-8	1	WASHER- Lock 5/16 hvy.
68	JA-46301-7	1	WASHER- 17/32 flat SAE
69	JA-99089-6	1	HYDRO ACTUATING ARM ASSY.
70	JA-48300-5	1	KEY- 1/8 x 5/8 woodruff
71	JA-35056-8	1	SPRING- Hydro control neutralizer
72	JA-40018-0	1	SCREW- 5/16-18 x 1 1/4 hex hd.
73	JA-35251-3	1	SPACER- Hydro pedal
74	JA-35953-2	1	PIN- Adjusting

\* See figure 12 for complete service parts breakdown.

**FIGURE 3**  
**ENGINE & DRIVE SHAFT**

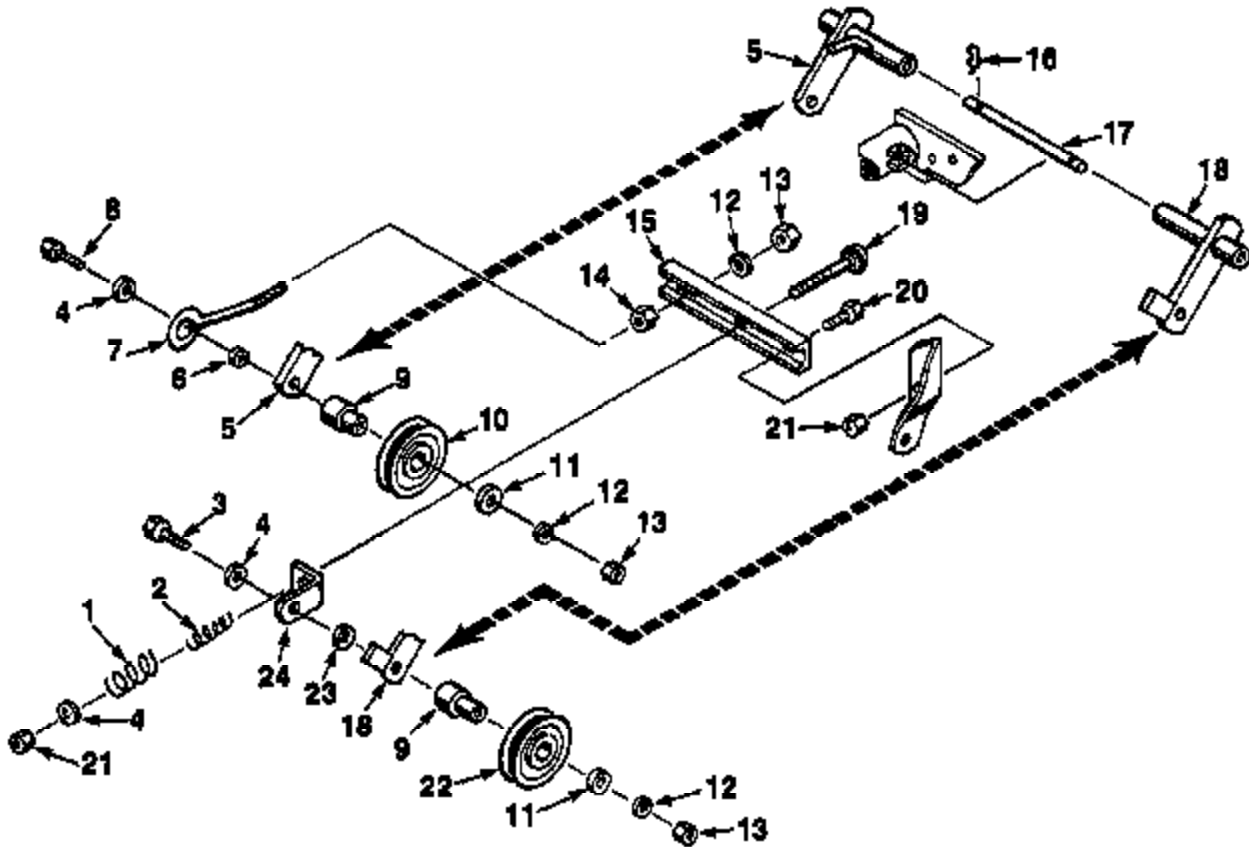


**FIGURE 3**  
**PARTS LIST**

NO	PART NO.	QTY	DESCRIPTION
1	JA-46302-9	1	KEY- 3/16 x 5/8 woodruff
2	JA-45645-6	1	RING- Retaining
3	JA-40026-2	12	SCREW- 3/8-16 x 1 hex hd.
4	JA-31957-7	1	BEARING- Drive shaft pivot
5	JA-45301-1	12	WASHER- 13/32 flat
6	JA-44476-2	12	NUT- 3/8-16 hex C/lock
7	JA-12964-3	1	COUPLING SHAFT ASSEMBLY
8	JA-12964-4	1	FRONT COUPLING ASSEMBLY
9	JA-99030-5	1	ENGINE- Kohler K-341, AQS, 16 H.P.
	JA-99030-7	1	ENGINE- Kohler K-301, AQS, 12 H.P.
10	JA-40010-8	4	SCREW- 1/4-20 x 5/8
11	JA-34885-8	1	CLAMP- Muffler mounting
12	JA-40018-8	1	BOLT- 5/16-18 x 7/8
13	JA-44818-5	2	WASHER- Lock 5/16 hvy
14	JA-35663-0	1	MUFFLER ASSEMBLY
15	JA-35184-9	1	KEY- Electric clutch mtg
16	JA-44814-8	1	LOCKWASHER- 7/16 hvy
17	JA-40033-0	4	SCREW- 7/16 x 3/4 hex hd
18	JA-40037-2	1	SCREW- 7/16 x 20 x 1 1/4 hex hd
19	JA-34584-5	1	WASHER- Clutch retainer
20	JA-35183-5	1	SPACER- Electric clutch mtg
21	JA-99037-8	1	ELECTRIC P.T.O Clutch brake
22	JA-44813-0	7	LOCKWASHER- 1/4 hvy
23	JA-45200-4	6	WASHER- 1/4 flat
24	JA-35895-8	1	SEAL- Engine duct

NO	PART NO	QTY	DESCRIPTION
25	JA-12187-0	1	AIR DUCTING ASSY (Ino. ref. #24).
26	JA-47177-2	1	NIPPLE- 1/4 NPT 3" long
27	JA-47244-7	1	CAP- 1/4 NPT Pipe
28	JA-44481-0	4	NUT- 3/8-16 hex flex lock
29	JA-98229-0	1	GROUND ENGINE TO FRAME
30	JA-35805-5	4	WASHER
31	JA-40027-0	4	BOLT- 3/8-16 x 2 hex hd
32	JA-44814-2	4	LOCKWASHER- 3/8 hvy
33	JA-45200-8	A/R	WASHER- 7/16 flat
34	JA-36509-2	2	BRACKET- Engine mtg.
35	JA-41203-3	1	SCREW- 3/8-16 x 1/2 sq. hd. set
36	JA-35075-6	4	DISC- Coupling
37	JA-35183-4	1	BUSHING- Drive shaft pivot
38	JA-30863-7	1	WASHER
39	JA-15848-3	1	COUPLING ASSEMBLY
40	JA-31731-9	1	SPRING FAN MOUNTING
41	JA-38521-9	1	FAN
42	JA-46302-9	1	KEY- 3/16 x 1 woodruff
43	JA-45402-3	2	WASHER- Lock 1/4 sheepsfoot
44	JA-99208-4	2	SUPPORT- Panel adjust
45	JA-44310-2	1	NUT- 1/4-20 hex
46	JA-44751-0	1	WASHER- Lock 1/4 ext. int tooth
47	JA-40010-8	3	SCREW- 1/4-20 x 3/4 hex hd

**FIGURE 4**  
POWER TAKE OFF ASSEMBLY (PTO)

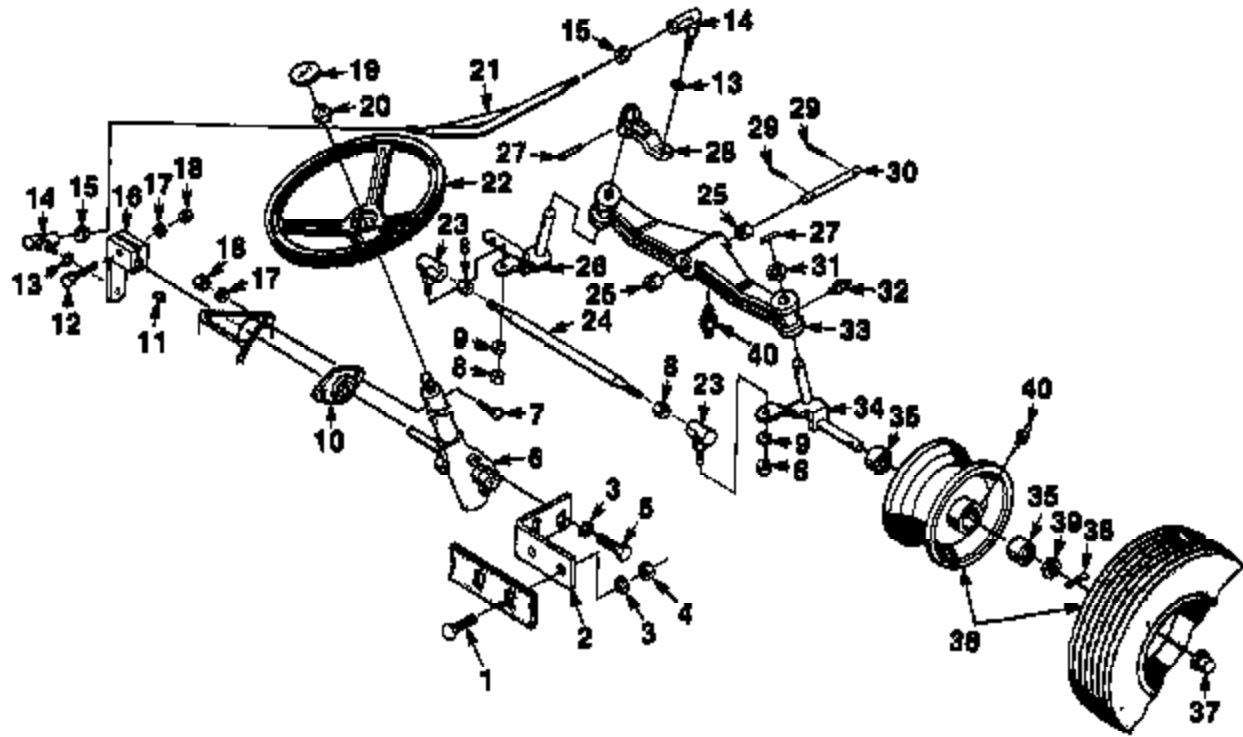


**FIGURE 4**  
**PARTS LIST**

NO.	PART NO.	QTY.	DESCRIPTION
1	JA-35374-7	1	SPRING- Comp. Idler tension (outside)
2	JA-35374-8	1	SPRING- Comp. Idler tension (inside)
3	JA-40027-2	1	SCREW- 3/8-16 x 2 1/4 hex hd
4	JA-31071-1	1	WASHER
5	JA-13022-4	1	FIXED IDLER ASSEMBLY
6	JA-35761-4	1	SPACER
7	JA-35405-7	1	ROD- Fixed idler retaining
8	JA-40027-4	1	SCREW- 3/8-16 x 2 1/2 hex hd.
9	JA-34485-2	2	IDLER- Stand off
10	JA-33081-4	1	PULLEY- Idler
11	JA-46901-1	2	WASHER- Flat 13/32
12	JA-44614-2	3	WASHER- Lock, 3/8 hvy
13	JA-44311-0	3	NUT- 3/8-16 hex

NO	PART NO.	QTY.	DESCRIPTION
14	JA-44381-0	1	NUT- 3/8 hex jam
15	JA-33541-8	1	BRACKET- Idler spring & adjusting screw
16	JA-46031-8	2	COTTER HAIRPIN
17	JA-35206-7	1	ROD- Idler pivot
18	JA-13084-0	1	IDLER ARM & SPRING TENSION ASSY
19	JA-44188-0	1	BOLT- 3/8-16 x 6-1/2 Car
20	JA-40028-2	2	SCREW- 3/8-16 x 1 hex hd
21	JA-44481-0	3	NUT- 3/8-16 hex flex lock
22	JA-33081-5	1	PULLEY- Idler
23	JA-35258-4	1	SPACER
24	JA-50097-1	1	BRACKET- Idler spring retaining

**FIGURE 5**  
**STEERING LINKAGE**



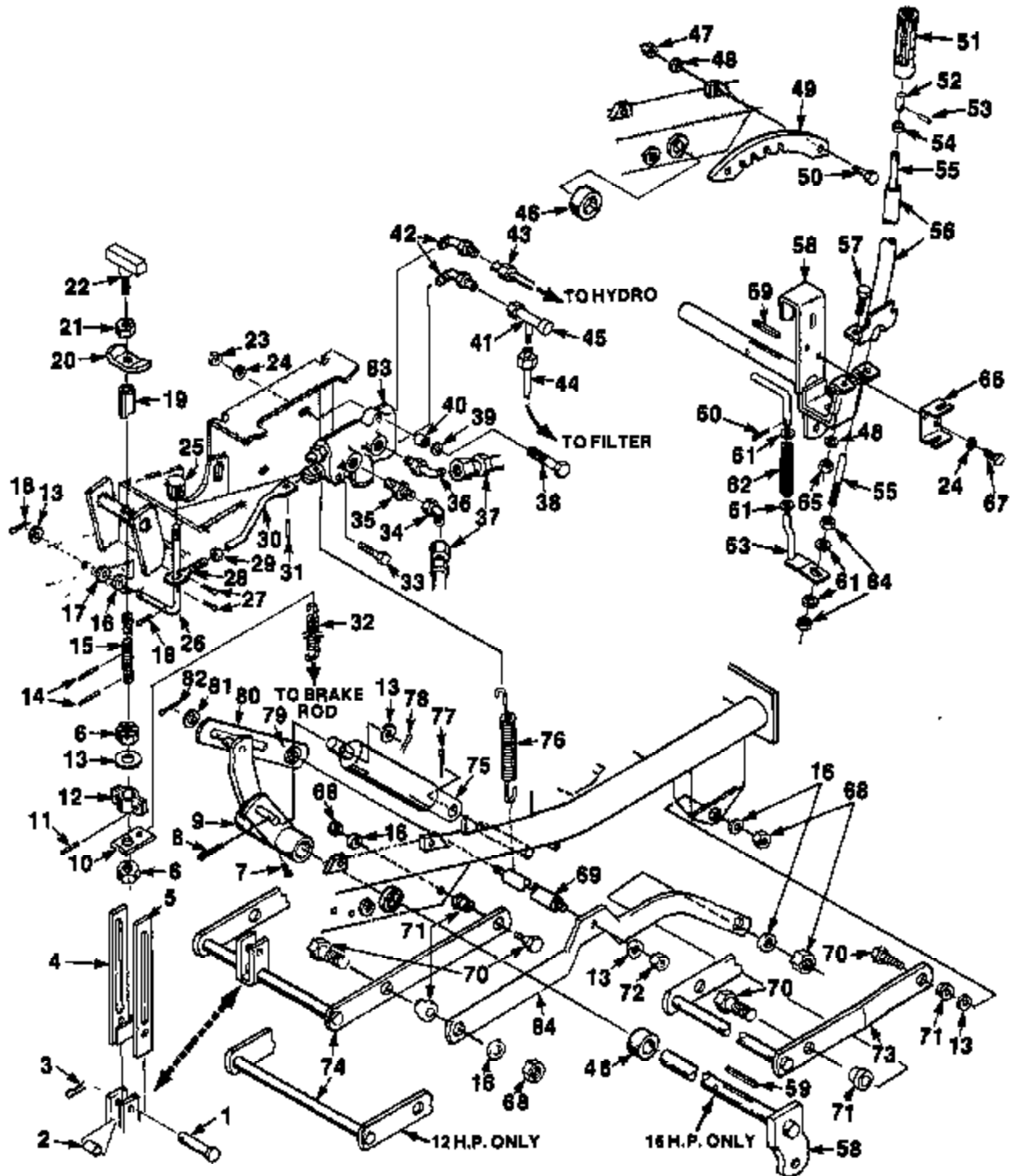
## FIGURE 5 PARTS LIST

NO.	PART NO.	QTY.	DESCRIPTION
1	JA-44187-8	2	BOLT- 3/8-16 x 1 1/4 Carr.
2	JA-33873-8	1	BRACKET- Steering gear
3	JA-44814-2	4	WASHER- Lock 3/8 hvy
4	JA-44811-0	2	NUT- 3/8-16 hex
5	JA-40026-4	2	SCREW- 3/8-16 x 1 1/4 hex hd.
**6	JA-12182-6	1	STEERING GEAR ASSEMBLY
7	JA-44180-2	2	BOLT- 5/16-18 x 3/4 carr.
8	JA-44382-0	2	NUT- 1/2-20 hex jam
9	JA-44816-4	2	WASHER- Lock 1/2 hvy.
10	JA-35394-9	1	BEARING
11	JA-46301-7	1	KEY- Woodruff
12	JA-40019-8	1	BOLT- 5/16-18 x 2
13	JA-44722-0	2	WASHER- Lock 1/2 int. tooth
14	JA-18153-6	2	BALL JOINT ASSEMBLY
15	JA-44382-0	2	NUT- 1/2-20 hex jam
16	JA-14197-3	1	STEERING ARM & HUB ASSEMBLY
17	JA-44819-6	3	WASHER- Lock 5/16 hvy
18	JA-44810-6	3	NUT- 5/16-18 hex
19	JA-33528-7	1	CAP- Steering wheel
20	JA-44382-6	1	NUT- 5/8-18 hex jam
21	JA-13077-2	1	DRAG LINK ASSEMBLY
22	JA-33052-6	1	STEERING WHEEL
23	JA-18461-6	2	BALL JOINT ASSEMBLY
24	JA-35154-7	1	ROD- Tie
25	JA-35179-8	2	BUSHING
26	JA-99119-5	1	SPINDLE ASSEMBLY- L.H.
27	JA-48140-4	2	PIN- 5/16 x 1/2 roll
28	JA-18180-0	1	STEERING ARM ASSEMBLY
29	JA-46136-3	2	PIN- Roll 3/16 x 1
30	JA-33653-0	1	PIN- Front axle mtg.
31	JA-32496-8	1	WASHER- Spindle retainer R.H.
32	JA-47121-9	3	FITTING- Grease
33	JA-18180-1	1	FRONT AXLE ASSEMBLY (Incl. Ref. #25 & 34)
34	JA-99007-2	1	SPINDLE ASSEMBLY R.H.
35	JA-32810-6	4	BEARING- Front wheel
**36	JA-12182-5	2	TIRE ASSEMBLY (front) (Incl. 35 & 40)
37	JA-35842-3	2	CAP- Front wheel hub
38	JA-46004-0	2	PIN- 5/32 x 1 1/4 cotter
39	JA-30245-8	2	WASHER- Front wheel mounting
40	JA-47121-4	2	GREASE FITTING- Front wheel

\*See illustration 11 for complete service parts breakdown.

\*\*See your dealer for service.

**FIGURE 6**  
**LIFT LINKAGE**



# FIGURE 6 PARTS LIST

NO	PART NO.	QTY.	DESCRIPTION
*1	JA-46147-3	1	PIN- Clevis
*2	JA-37527-5	1	SPACER
*3	JA-46031-2	1	HAIRPIN- Cotter
*4	JA-14198-1	1	POSITION CONTROL LINK ASSY, L.H.
*5	JA-38853-4	1	LINK- Micro-adjust R.H.
*6	JA-44566-6	2	NUT- 1/2-20 hex slotted
7	JA-41201-4	1	SCREW- 5/16-18 x 1/2 ast
8	JA-46003-6	1	PIN- 1/8 x 2 cotter
9	JA-13007-1	1	LIFT ARM ASSEMBLY
*10	JA-35909-5	1	BRACKET- Spring attachment
*11	JA-46136-0	2	PIN- Roll 3/16 x 3/4
*12	JA-16190-0	1	BRACKET- Slide
*13	JA-46301-7	2	WASHER- 17-32" SAE Flat
*14	JA-46135-8	2	PIN- Roll 1/8 x 3/4
*15	JA-38853-1	1	ROD- Micro-adjust
16	JA-45301-1	8	WASHER- 3/8 SAE Flat
*17	JA-46401-2	1	WASHER- Shakeproof 3/8"
*18	JA-46002-6	2	PIN- 1/8 x 3/4 cotter
*19	JA-35887-1	1	TUBE- Lock
*20	JA-35886-0	1	LOCK- Position control
*21	JA-44382-0	1	NUT- 1/2-20 hex jam
*22	JA-35909-3	1	KNOB- Micro-adjust
*23	JA-44310-2	2	NUT- 1/4-20 hex
*24	JA-44613-0	2	WASHER- Lock 1/4 hvy
*25	JA-35163-7	1	KNOB- Lift handle
*26	JA-35163-6	1	LEVER- Valve shift
*27	JA-46002-6	2	PIN- 1/8 x 3/4 cotter
*28	JA-37527-4	1	PIN- Adjusting
*29	JA-44311-0	1	NUT- 3/8-18 hex
*30	JA-33924-7	1	ROD- Shift
*31	JA-46135-2	1	PIN- Roll 3/32 x 3/4
*32	JA-35909-4	1	SPRING
*33	JA-40012-2	1	SCREW- 1/4-20 x 2 1/2 hex hd
*34	JA-35906-6	1	ELBOW- Swivel
*35	JA-35782-1	1	RESTRICTOR- Ret. hydraulic line
*36	JA-35139-9	1	HOSE- Elbow (to valve)
*37	JA-16179-9	2	HOSE ASSEMBLY
*38	JA-40013-2	1	SCREW- 1/4-20 x 2 3/4 hex
*39	JA-45200-4	1	WASHER- 1/4 flat
*40	JA-31326-0	1	SPACER- Upper bolt
*41	JA-35918-6	1	FEMALE- Run tee
42	JA-35110-7	2	ELBOW- Tube to valve- VFP
*43	JA-11842-9	1	TUBE ASSEMBLY- Valve to hydro
*44	JA-12410-4	1	TUBE ASSEMBLY- Valve to filter

NO.	PART NO.	QTY.	DESCRIPTION
*45	JA-35407-7	1	CAP
46	JA-35174-9	1	SPACER- Lift arm
**47	JA-44310-8	2	NUT- 5/16- 18 hex
**48	JA-44613-8	2	WASHER- Lock 5/16 hvy
**49	JA-33522-4	1	QUADRANT- Lift
**50	JA-40018-8	2	SCREW- 5/16-18 x 1 hex hd.
**51	JA-34183-3	1	GRIP- Lift handle
**52	JA-31534-9	2	PLUNGER- Lift lever
**53	JA-46135-5	1	PIN- 1/8 x 1/2 roll
**54	JA-31069-0	1	COLLAR- Lift lever plunger
**55	JA-39012-3	1	ROD- Lift lever
**56	JA-12197-7	1	HANDLE LIFT
**57	JA-40019-0	2	SCREW- 5/16-18 x 1 1/4 hex hd.
58	JA-12197-6	1	LIFT ARM & PIVOT WELDMENT, 12 H.P.
	JA-13065-8	1	LIFT ARM & PIVOT WELDMENT 16 H.P.
59	JA-31043-7	1	KEY- 3/16 x 3/16 x 2 3/8
**60	JA-46001-2	1	PIN- 3/32 x 5/8 cotter
**61	JA-45300-9	4	WASHER- 5/16 flat
**62	JA-37566-0	1	SPRING
**63	JA-13074-2	1	PIN- Latch
**64	JA-44577-7	2	NUT- 5/16-18 hex lock
**65	JA-44380-8	2	NUT- 5/16-18 hex
**66	JA-35842-7	1	GUIDE
**67	JA-40010-4	2	SCREW- 1/4 20 x 1/2 hex
68	JA-44476-2	8	NUT- 3/8-16 hex o/lock
69	JA-35822-4	1	CROSSBAR- Connecting link
70	JA-35156-5	8	BOLT- Linkage mounting
71	JA-35155-7	8	BUSHING- Rear hanger pivot
72	JA-44475-8	2	NUT- 1/2-18 hex o/lock
73	JA-13066-3	1	HANGER- Front
74	JA-13068-2	1	HANGER- Rear 12 HP
	JA-13068-1	1	HANGER- Rear H.P
*75	JA-50236-5	1	CYLINDER- 2" lift (Note 1)
76	JA-35235-0	1	SPRING
*77	JA-46003-0	1	PIN- 1/8 x 1 1/4 cotter
*78	JA-46002-6	1	PIN- 1/8 x 1 cotter
79	JA-34546-5	1	BUSHING- Lift link
80	JA-15885-0	1	LIFT LINK ASSEMBLY
81	JA-31350-8	1	WASHER
82	JA-46002-6	1	PIN- Cotter 1/8 x 1
**83	JA-50251-1	1	VALVE- Lift (Note 2)
84	JA-33663-8	2	LINK- Connecting

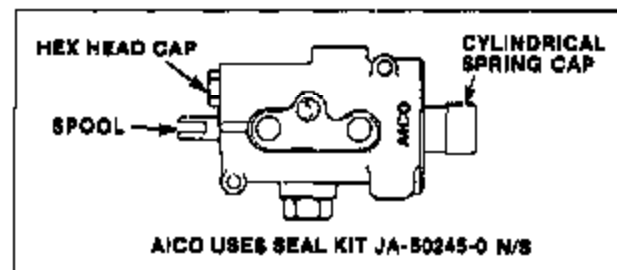
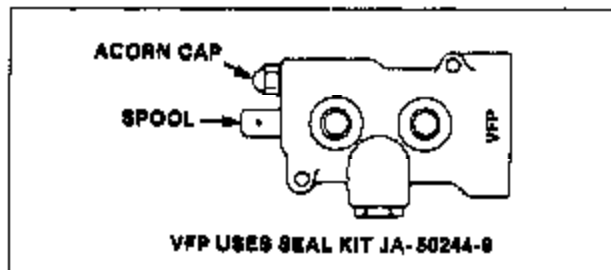
\*16 H.P. only.

\*\*12 H.P. only.

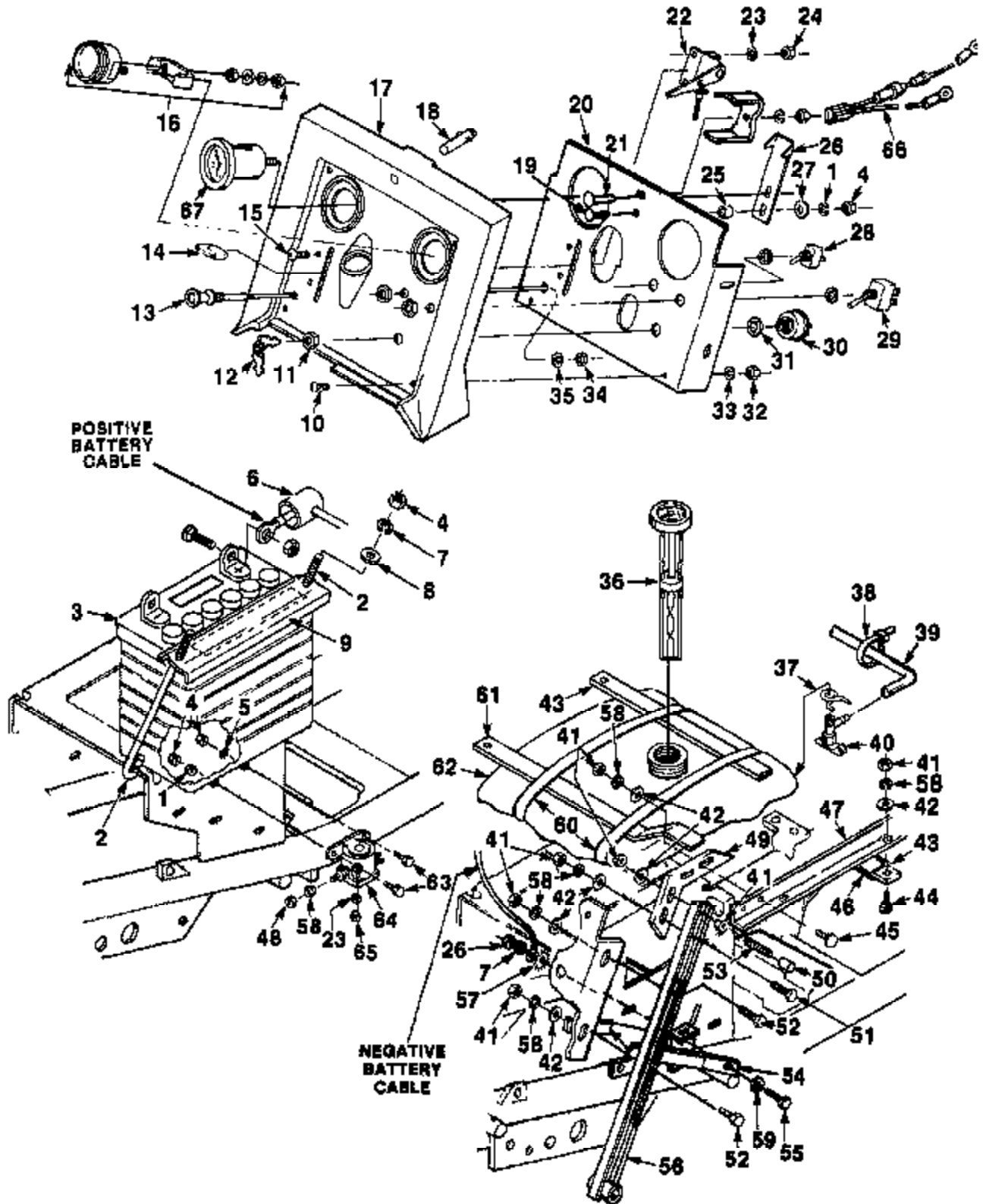
NOTE 1: For service of cylinder, order part no. JA-50236-5.

For service of seal, order part no. JA-50236-6.

NOTE 2: For service of valve see sketches for replacement valve no. JA-50251-1.



**FIGURE 7**  
**INSTRUMENT PANEL, BATTERY & FUEL TANK**

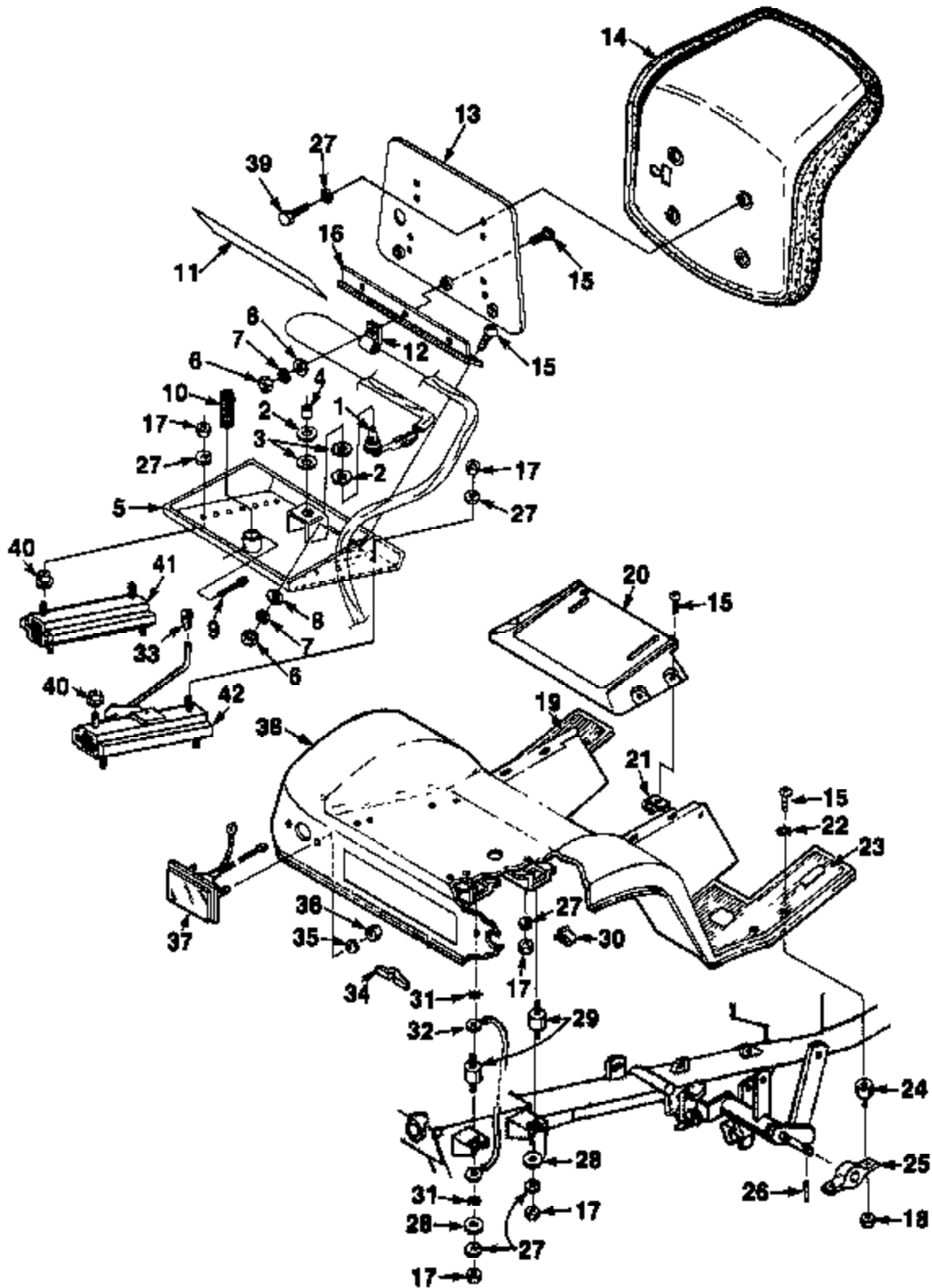


## FIGURE 7 PARTS LIST

NO.	PART NO.	QTY.	DESCRIPTION
1	JA-44813-0	2	WASHER- Lock 1/4 hvy
2	JA-36846-4	2	ROD- Battery hold down
3	JA-36843-2	1	BATTERY
4	JA-44310-2	7	NUT- 1/4-20 hex
5	JA-44730-4	1	WASHER- Lock 1/4 ext. tooth
6	JA-36804-4	1	CAP- Positive battery terminal
7	JA-44813-0	8	WASHER- Lock 1/4 hvy.
8	JA-46200-4	2	WASHER- 1/4 Flat
9	JA-33874-0	1	BRACKET- Battery
10	JA-40385-8	4	SCREW- 8-32 x 1/2 L.G. slotted C/R hd.
11	JA-36885-8	1	NUT
12	JA-34308-0	1	KEY- (set of 2)
13	JA-13065-7	1	CHOKE CONTROL ASSEMBLY
14	JA-34365-8	1	KNOB- Throttle control
15	JA-40391-4	2	SCREW #10-24 x 3/4 C/R truss hd
16	JA-10781-7	1	AMMETER
17	JA-38506-1	1	PANEL- Dash
18	JA-36887-8	1	ACTIVATOR- Hood release
19	JA-44004-8	1	SCREW- 1/4-20 x 1 carr
20	JA-39505-8	1	PLATE- Instrument
21	JA-46353-0	1	RIVET- 1/4 x 1 Button hd
22	JA-12185-3	1	THROTTLE- Control & Cable
23	JA-44811-8	2	WASHER- Lock #10 hvy
24	JA-44431-0	2	NUT- #10-24 hex
25	JA-35083-8	1	SPACER
26	JA-33854-0	1	LATCH- Hood lock spring
27	JA-45302-3	1	WASHER- 1/4 SAE Flat
28	JA-16889-2	1	SWITCH- Headlight 16 HP only
29	JA-18081-5	1	SWITCH- Electric clutch
30	JA-12884-5	1	SWITCH- Ignition (incl. Ref #12, 11 & 31)
31	JA-44722-1	1	WASHER- Lock Int. tooth
32	JA-44430-6	4	NUT- 8-32 hex
33	JA-44811-2	4	WASHER- Lock #8
34	JA-44381-2	1	NUT- 3/8-24 hex jam
35	JA-44701-4	1	WASHER- Lock 3/8 ext. tooth
36	JA-13069-4	1	CAP- Fuel tank & Gauge 12 HP
	JA-18179-3	1	CAP- Fuel tank & Gauge 16 HP.

NO.	PART NO.	QTY.	DESCRIPTION
37	JA-35881-1	1	CLAMP- Fuel valve
38	JA-47316-4	1	STA-BTRAP- 16 HP only
39	JA-35888-7	1	LINE- Fuel 12 HP
	JA-37511-0	1	LINE- Fuel 16 HP
40	JA-60261-1	1	SHUT-OFF VALVE ASSY.
41	JA-44310-6	16	NUT- 5/16-18 hex
42	JA-46300-9	16	WASHER- 5/16 flat
43	JA-38853-7	1	SUPPORT- Gas tank, (front)
44	JA-44008-0	4	BOLT 5/16-18 x 7/8 carr.
45	JA-44007-8	4	BOLT- 5/16-18 x 3/4 carr
46	JA-36823-6	2	SLEEVE- Strap
47	JA-13060-8	1	RAIL- R.H.
	JA-13060-7	1	RAIL- L.H.
48	JA-44380-8	2	NUT- 5/16-24 hex jam
49	JA-33853-9	2	BRACKET- Panel Mtg
50	JA-35307-7	2	TIP- Rod
51	JA-40016-6	2	SCREW- 5/16-18 x 7/8 hex hd.
52	JA-40016-4	4	SCREW- 5/16-18 x 3/4 hex hd.
53	JA-37853-5	2	STUD- Adjuster
54	JA-89205-7	1	SUPPORT- Console (R.H.)
	JA-89205-1	1	SUPPORT- Console (L.H.)
55	JA-40011-2	2	SCREW- 1/4-20 x 1 hex hd
56	JA-13060-9	2	ARM- Console
57	JA-44761-0	1	WASHER- Lock 1/4 ext. Int tooth
58	JA-44813-6	16	WASHER- Lock 5/16 hvy
59	JA-46302-3	8	WASHER- 1/4 SAE flat
60	JA-60242-5	1	STRAP SET- Fuel tank (12 H.P.)
	JA-60242-4	1	STRAP SET- Fuel tank (16 H.P.)
61	JA-33873-8	1	SUPPORT- Gas tank (rear)
62	JA-38504-4	1	TANK- Fuel, 3 Gal., 12 H.P.
	JA-38504-5	1	TANK- Fuel, 5 Gal., 16 H.P.
63	JA-40010-6	2	SCREW- 1/4-20 x 3/4 hex hd.
64	JA-89559-0	1	SOLENOID- Starter
65	JA-44481-2	2	NUT- #10-32 hex
66	JA-13080-1	1	HARNES- HOURMETER
67	JA-59858-0	1	HOURMETER

**FIGURE 8**  
**REAR FENDER & SEAT**

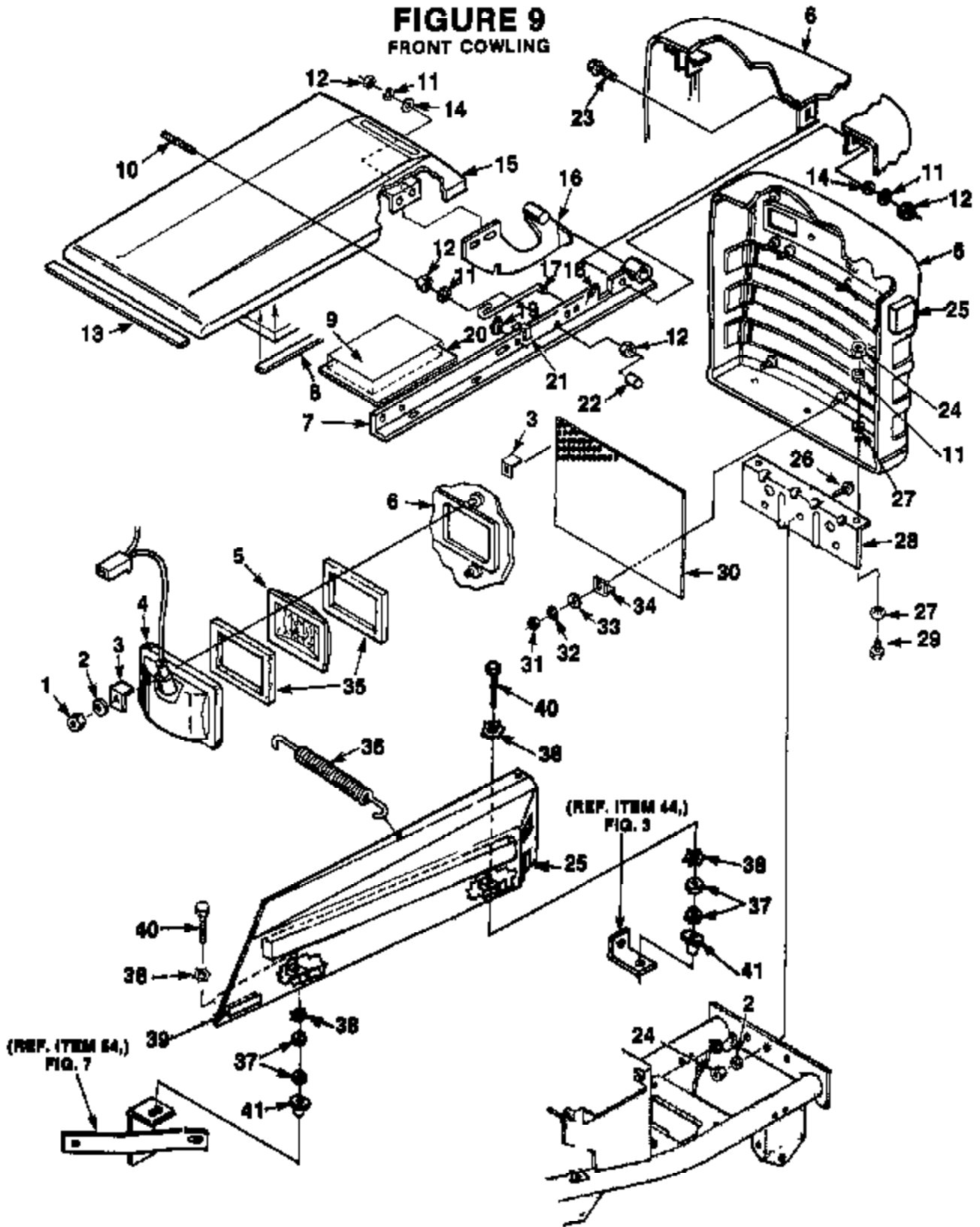


## FIGURE 8 PARTS LIST

NO.	PART NO.	QTY.	DESCRIPTION
1	JA-12833-8	2	SWITCH- Safety
2	JA-34378-4	2	NUT- Safety switch
3	JA-44702-2	2	WASHER- Lock Int 5/8
4	JA-34378-5	1	BOOT- Safety switch
5	JA-99118-1	1	BOX- Tool
6	JA-44310-2	4	NUT- 1/4-20 hex
7	JA-44613-0	4	WASHER- Lock 1/4 hvy
8	JA-46200-4	6	WASHER- 1/4 flat
9	JA-46003-8	1	PIN- Cotter
10	JA-85928-8	1	SPRING
11	JA-89017-8	1	DECAL- Instruction
12	JA-90315-9	1	CLIP- Seat switch mtg.
13	JA-39053-0	1	PLATE- Seat mounting
14	JA-12408-4	1	SEAT ASSEMBLY
15	JA-40401-4	4	SCREW- 1/4-20 x 1/2 Phil.
16	JA-88168-8	1	HINGE- Seat
17	JA-44310-6	12	NUT- 5/16-18 hex
18	JA-44470-8	4	NUT- Lock 1/4-20 (12 H.P. only)
19	JA-89012-1	1	PAD- Foot L.H.
20	JA-89505-0	1	INSERT- Body
21	JA-44324-5	4	NUT- Tinnerman 10/32
22	JA-44791-0	4	WASHER- Lock 1/4 Ext tooth
23	JA-39012-0	1	PAD- Foot R.H.
24	JA-38965-8	4	MOUNTING- Front fender
25	JA-36361-5	2	BRACKET- Footboard
26	JA-46139-7	4	PIN- Roll, 1/4 x 1 1/4
27	JA-44613-8	16	WASHER- Lock 5/16 hvy
28	JA-46300-9	4	WASHER- Plain 5/16 SAE
29	JA-36175-6	4	MOUNTING- Flexible
*30	JA-44527-1	2	CLIP- Tinnerman
*31	JA-44730-2	2	WASHER- Lock, 5/16 Ext, tooth
*32	JA-36195-5	1	WIRE- Ground body
33	JA-36175-3	1	KNOB- Seat slide
*34	JA-36230-2	2	RETAINER- Tail light wire
*35	JA-44811-8	4	WASHER- Lock #10 hvy
*36	JA-44431-2	4	NUT- 10-32 hex
37	JA-12987-7	2	TAIL LIGHT ASSEMBLY
38	JA-99118-2	1	REAR FENDER & BODY ASSEMBLY
39	JA-40018-2	4	SCREW- 5/16 x 5/8 hex hd
40	JA-35308-3	4	SPACER- Seat slide
41	JA-13002-8	1	SEAT- Slide (L.H.)
42	JA-12160-8	1	SEAT- Slide (R.H.)

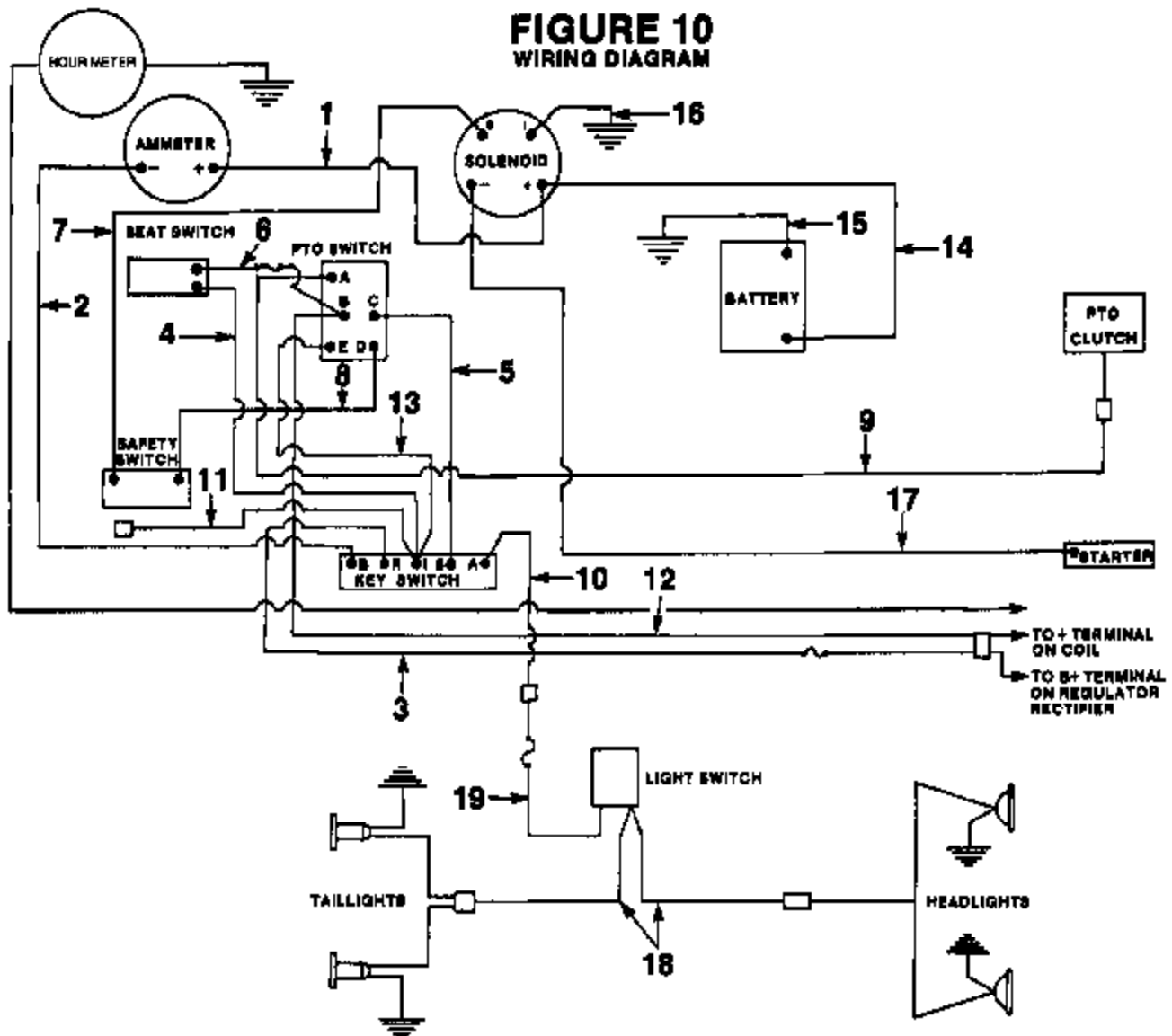
\*16 H.P. only.

**FIGURE 9**  
**FRONT COWLING**



## FIGURE 9 PARTS LIST

NO.	PART NO.	QTY.	DESCRIPTION
1	JA-44810-2	4	NUT- 1/4-20 hex
2	JA-44813-0	7	WASHER- Lock 1/4 hvy
3	JA-35893-5	8	CLIP- Headlight mounting
4	JA-12193-0	1	HEADLIGHT ASSEMBLY (Incl 5 & 35) 18 H.P
5	JA-33943-3	2	LENS
6	JA-99037-3	1	COWLING- Front
7	JA-13080-8	1	RAIL- Hood support (R.H.)
	JA-13080-7	1	RAIL- Hood support (L.H.)
8	JA-35888-8	2	STRIP- Hood spacer
9	JA-33984-0	1	DECAL- Battery danger
10	JA-37653-5	2	STUD- Adjuster
11	JA-44813-6	13	WASHER- Lock 5/16 hvy
12	JA-44810-6	10	NUT- 5/16-18 hex
13	JA-35926-8	1	STRIP- Hood spacer
14	JA-45200-6	2	WASHER- 5/16 flat
15	JA-99010-6	1	HOOD ASSEMBLY
16	JA-12192-8	1	HOOD HINGE ASSEMBLY, R H
	JA-12192-6	1	HOOD HINGE ASSEMBLY, L.H.
17	JA-83940-0	1	ROD- Hood support
18	JA-46135-6	1	PIN- Roll
19	JA-37552-7	1	CLIP- Hood support rod
20	JA-35823-7	1	COVER- Battery
21	JA-35248-8	1	CLIP- Headlight wire mounting (18 H.P)
22	JA-36307-7	2	TIP- Probe
23	JA-40018-8	2	SCREW- 5/16-18 x 1 hex hd.
24	JA-44310-2	5	NUT- 1/4-20 hex
25	JA-99205-1	1	PANEL- Side (R.H.)
	JA-99205-4	1	PANEL- Side (L.H.)
26	JA-40401-6	3	SCREW- 1/4-20 x 3/4 C/R
27	JA-45302-3	4	WASHER- SAE Flat 1/4
28	JA-89008-7	1	BRACKET- Front cowling
29	JA-40010-8	2	SCREW- 1/4-20 x 5/8 hex hd.
30	JA-99011-3	1	GRILL- Front cowling
31	JA-44431-0	4	NUT- 10-24 hex
32	JA-44611-6	4	WASHER- Lock #10 hvy
33	JA-45200-2	4	WASHER- 1/4 flat
34	JA-35889-5	2	CLIP- Grip mtg. bottom
35	JA-54548-8	4	GASKET
36	JA-35890-6	1	SPRING- Extension
37	JA-44311-0	6	NUT- 3/8-16 hex
38	JA-44701-4	6	WASHER- Lock Ext. 3/8
39	JA-33967-7	1	DECAL- Lift lever (12 H.P)
40	JA-35923-5	4	SCREW- 3/8-16 x 2 3/4
41	JA-35888-1	4	NUT- Side panel adjusting



**FIGURE 10  
PARTS LIST**

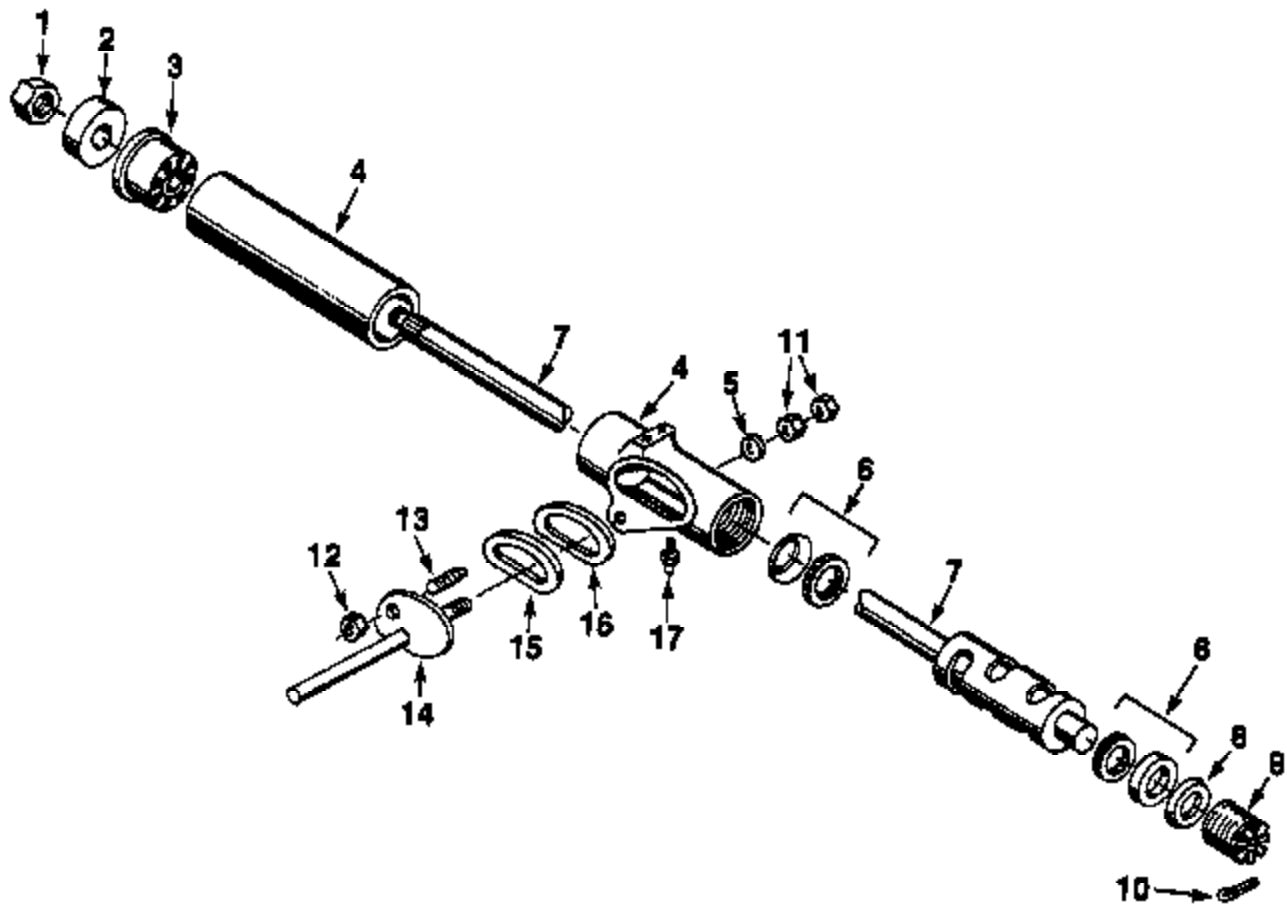
NO.	PART NO.	QTY.	DESCRIPTION
	JA-11775-4	1	WIRING- Harness (Incl. Ref. Nos. 1-18)
1		1	WIRE- Red, Solenoid to ammeter
2		1	Wire- Yellow, ammeter to key switch
3		1	Wire- Orange, key switch to Rectifier (Fused, 30 amp)
4		1	Wire- Violet, key switch to seat switch
5		1	WIRE- White, key switch to PTO switch
6		1	WIRE- Violet, seat switch to PTO Switch (Fused, 8 Amp)
7		1	WIRE- White, Solenoid to safety switch
8		1	WIRE- White, safety switch to PTO switch
8		1	WIRE- Green, PTO switch to PTO clutch

NO.	PART NO.	QTY.	DESCRIPTION
10		1	WIRE- Pink key switch to light Accessory (Pig Tail)
11		1	WIRE- Orange, key switch to lift Accessory (Pig Tail)
12		1	WIRE- Light Blue, PTO switch to coil
13		1	WIRE- Violet, key switch to PTO Switch
14	JA-35942-4	1	CABLE- Red, battery to solenoid
15	JA-37552-2	1	CABLE- Black, battery to ground
16	JA-11220-6	1	CABLE- Black, solenoid to ground
17	JA-36886-4	1	CABLE- White, solenoid to starter
*18	JA-35230-7	1	CABLE- Pink w/yellow tracer headlight to switch to tail light
*19	JA-36230-8	1	CABLE- Pink, switch to connector
**20	JA-47916-4	3	Sta-Strap cable tie
**21	JA-36230-2	2	RETAINER- Wire harness hold down
**22	JA-35249-6	1	CLIP- Wire harness

\*16 H.P. ONLY.

18 \*\*Not shown, used to hold wires to tractor frame.

**FIGURE 11**  
**STEERING GEAR ASSEMBLY - PART NO. JA-12192-6**

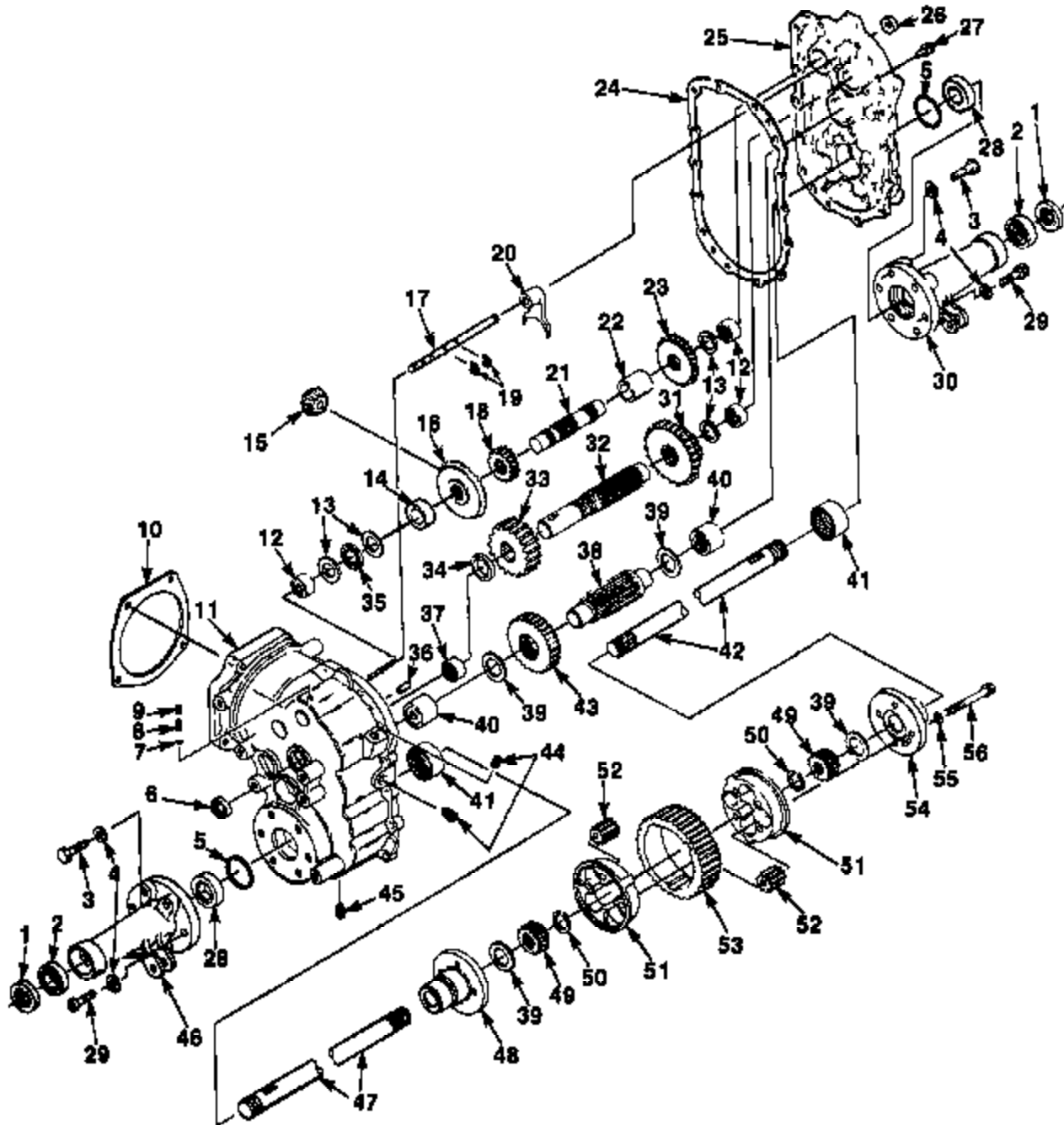


**FIGURE 11**  
**PARTS LIST**

NO.	PART NO.	QTY.	DESCRIPTION
	JA-12192-6	1	Steering Gear Assembly (Incl the Following)
1	JA-44382-8	1	NUT- 5/8-18 hex jam
2	JA-54506-3	1	COVER- Dust
3	JA-54506-4	1	BEARING- Steering Column
4	JA-50237-0	1	STEERING- Gear housing assembly
5	JA-54906-0	1	WASHER- 11/16 x 1-1/8
6	JA-54906-5	1	BALL- Bearing and cup assembly
7	*N.S.S	1	CAM and Tube Assembly
8	JA-54506-7	1	WASHER- Belleville
9	JA-54506-8	1	PLUG- Steering Gear Adjustment
10	JA-45002-4	1	PIN- 1/8 x 1/2 Cotter
11	JA-44383-2	2	NUT- 3/4-18 hex jam
12	JA-44312-4	1	NUT- 9/16-18 hex
13	JA-50024-3	1	STUD- Lever
14	JA-51978-4	1	LEVER- Assembly
15	JA-54903-3	1	RETAINER- Oil seal
16	JA-54903-4	1	SEAL- Oil
17	JA-47121-2	1	FITTING- 1/8 x 45° grease

\*Not serviced separately. For service use complete gear assembly, No. JA-12192-6.

**FIGURE 12**  
**TRANSAXLE**



## FIGURE 12 PARTS LIST

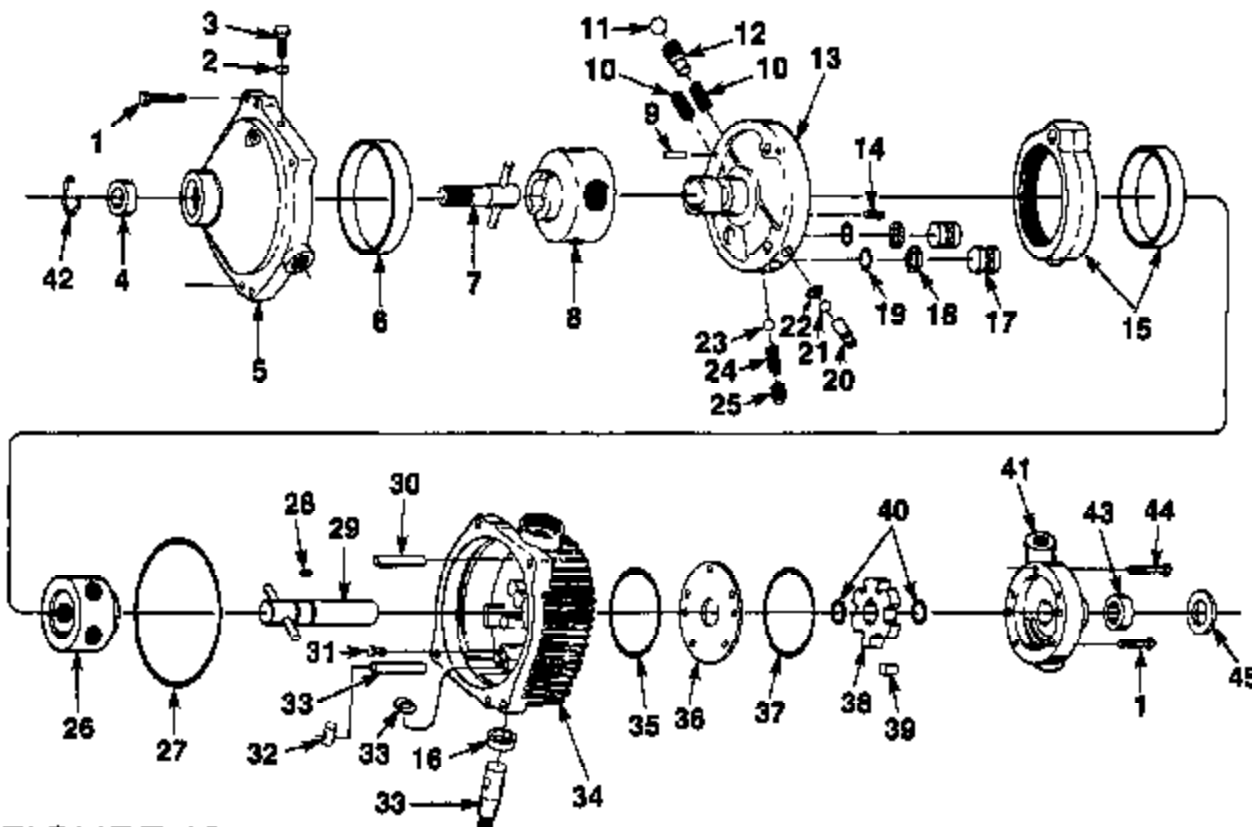
NO	PART NO.	DESCRIPTION	NO.	PART NO.	DESCRIPTION
1	788049	SEAL- Oil	28	780104	BEARING- Thrust
2	780103	BEARING- Ball	29	792059	SCREW- 1/2-13 x 1 1/2 allen hd. cap
3	792055	SCREW- 1/2-13 x 1 1/2 hex hd	30	782039	HOUSING- Axle
4	792066	WASHER- Lock 1/2"	31	778100	GEAR- Cluster (23 & 27 tooth)
5	788048	SEAL- Square cut	32	778118	SHAFT- Braks
6	788008	SEAL- Oil	33	778102	GEAR- Spur (17 teeth)
7	792004	BALL- Steel	34	78005	SPACER
8	792009	SPRING	36	780012	BEARING- Thrust
9	792068	SCREW- 1/4-20 1/2 cut	36	788028	PIN- Dowel
10	788060	GASKET	37	780087	BEARING- Needle
11	770080-A	CASE- Assembly, transaxle (Incl #12, 37, 40 & 41)	38	778120	PINION- Output
12	780100	BEARING- Needle	39	780141	WASHER- Thrust
13	780045	WASHER- Thrust	40	780099	BEARING- Thrust
14	788056	SPACER	41	780098	BEARING- Needle
15	778083-A	PINION- Bevel	42	774225	AXLE- Right hand
16	778097	GEAR- Bevel (30 teeth)	43	778103	GEAR- Output (33 teeth)
17	784198	ROD- Shift	44	782010	PLUG- Pipe
18	778098	GEAR- Spur (18 teeth)	45	792019	PLUG- Magnetic drain
19	792054	RING- Snap	46	782040	HOUSING- Axle
20	784199	FORK- Shift	47	774226	AXLE- Left hand
21	778118	SHAFT- Counter	48	774200	CARRIER- Differential
22	788058	SPACER	49	778085	GEAR- Ring
23	778099	GEAR- Spur (20 teeth)	50	792062	RING- Snap
24	788047	GASKET- Case & Cover	51	788054	CORE- Body
25	772065	COVER- Assembly transaxle (Incl. 12, 40 & 41)	52	778068	GEAR- Pinion
26	788034	SEAL- Oil	53	778084	GEAR- Ring
27	792087	SCREW- 5/16-18 x 1 thrd forming hex hd	54	774199	CARRIER- Differential
			55	782011	WASHER- Lock
			56	792053	SCREW- 3/8-18 x 3 5/16 hex hd

ORDER REPLACEMENT PARTS FROM:

### TECUMSEH PRODUCTS COMPANY

Lauson - Power Products Parts Dept Division  
Grafton, Wisconsin

**FIGURE 13**  
HYDROSTATIC TRANSMISSION - PART NO. JA-11542-5



**FIGURE 13**  
**PARTS LIST**

NO	PART NO	QTY	DESCRIPTION
1	JA-40019-0	4	SCREW- 5/16 x 1 1/4 hex hd
2	JA-56673-4	1	O-RING- Tube fitting
3	JA-50257-2	1	O-RING PLUG ASSEMBLY (Includes, ref #2)
4	JA-57003-0	1	BEARING- Ball (output shaft)
5	JA-61876-7	1	BODY- Motor (subassembly) 4,6,7 & 42)
6	JA-54935-8	1	RACE- Inner
7	JA-50246-0	1	SHAFT- Subassembly output
8	JA-50244-4	1	ROTOR- Ball subassembly motor
9	JA-54935-3	1	DOWEL- Acceleration valve plug
10	JA-54935-5	2	SPRING- Acceleration valve
11	JA-54935-7	2	BALL- 5/8 Dia acceleration plug
12	JA-54991-0	2	VALVE- Acceleration
13	JA-61888-8	1	PINTLE- Subassembly (Incl. 9, 10, 11, 12, 14, 17 18, 19, 20, 21, 22, 23, 24 & 25)
14	JA-54937-3	1	PIN- Coil
15	JA-99038-8	1	CAM- Ring
16	JA-54841-5	1	SEAL- Oil control shaft
17	JA-54935-7	2	PISTON- Pintle
18	JA-54935-8	2	RING- Backup piston
18	JA-54935-9	2	RING- O-RING piston.
20	JA-54935-3	2	BODY- Directional valve
21	JA-54937-1	2	BALL- 5/16 die directional valve
22	JA-54937-2	1	RETAINER

NO	PART NO	QTY	DESCRIPTION
23	JA-54837-0	1	BALL- 7/16 dia, charge pressure relief
24	JA-54835-8	1	SPRING- Charge pressure relief valve
25	JA-54835-8	1	PLUG- Charge pressure relief valve
26	JA-50245-8	1	ROTOR- Ball subassembly
27	JA-54841-5	1	SEAL- Ring square cut
28	JA-54844-4	1	PIN- Drive charge pump
29	JA-50109-5	1	SHAFT SUBASSEMBLY- Input
30	JA-56887-4	1	PIN- Dowel pivot
31	JA-54937-9	2	CAP
32	JA-54937-7	1	RING- Insert clamp (steel)
33	JA-61888-8	1	CONTROL SHAFT & PIN ASSEMBLY (Incl 15)
34	JA-51898-1	1	COVER- Subassembly (Incl Ref #30, 33 & 16)
35	JA-54935-4	1	SEAL- Square out
36	JA-54980-9	1	PLATE- Charge pump
37	JA-89214-0	1	SEAL- Square out
38	JA-54950-8	1	CARRIER- Charge pump
38	JA-54843-8	6	ROLL- Charge pump
40	JA-64843-7	2	RING- Snap input shaft
41	JA-50109-8	1	BODY SUBASSEMBLY- Charge pump (Incl Ref 43)
42	JA-54844-5	1	RING- Snap output shaft
43	JA-54841-5	1	SEAL- Oil input shaft
44	JA-40019-4	1	SCREW- Hex hd. 5/16-18 x 1 3/4"
45	JA-54841-8	1	SHIELD- Grass

\*Parts included in charge, pump KR no. JA-60316-4.



0883

**HEADQUARTERS**

**HOMELITE DIVISION OF TEXTRON INC.**  
 P.O. BOX 7047  
 14401 CAROWINDS BOULEVARD  
 CHARLOTTE, N.C. 28241

**OVERSEAS OFFICES**

**HOMELITE TEXTRON**  
 Une Division de Textron Atlantio S.A.R.L.  
 B.P. 7011  
 95050 Cergy-Pontoise Cedex  
 France

**HOMELITE DIVISION OF TEXTRON INC.**  
 Pacific Limited  
 P.O. BOX 208  
 Blackburn, 3130  
 Victoria, Australia

**HOMELITE DIVISION OF TEXTRON INC.**  
 Korenneerstraat 1  
 2158 BM Nieuw Vennepe  
 The Netherlands

**HOMELITE DIVISION OF TEXTRON LTD.**  
 Unit 22, Hither Trading Estate  
 Clevedon, Avon, U.K. BS21 6XU

**CANADIAN OFFICES**

**HOMELITE DIVISION OF TEXTRON INC.**  
 1850 55th Avenue  
 Lachine, Quebec, Canada  
 H8T-3J6

3260 Viking Way  
 Richmond, British Columbia  
 V6V 1N8

18520, 111th Avenue  
 Edmonton, Alberta  
 T5M 3V8

37 Densley Avenue  
 Toronto, Ontario  
 M6M 2P5

45 Brandon Street  
 Moncton, New Brunswick  
 E1C 7E7

**HOMELITE TEXTRON**  
 Homelite Division of Textron Inc.