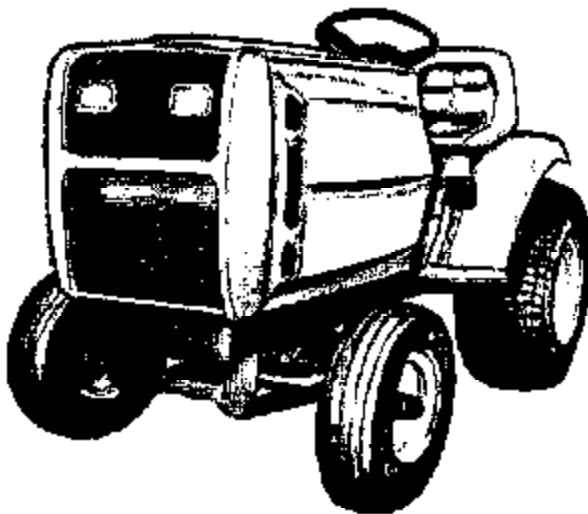


PARTS LIST

HYDRO TRACTORS



MODELS: GT12H
UT-34002

GT14H
UT-34003

GT16H
UT-34004

**HOMELITE
JACOBSEN**

⚠ WARNING

IF INCORRECTLY USED THIS MACHINE CAN CAUSE SEVERE INJURY. THOSE WHO USE AND MAINTAIN THE MACHINE SHOULD BE TRAINED IN ITS PROPER USE, WARNED OF ITS DANGERS, AND SHOULD READ THE ENTIRE MANUAL BEFORE ATTEMPTING TO SET UP, OPERATE, ADJUST OR SERVICE THE MACHINE.

FIGURE 1
FRAME & TRANSAXLE

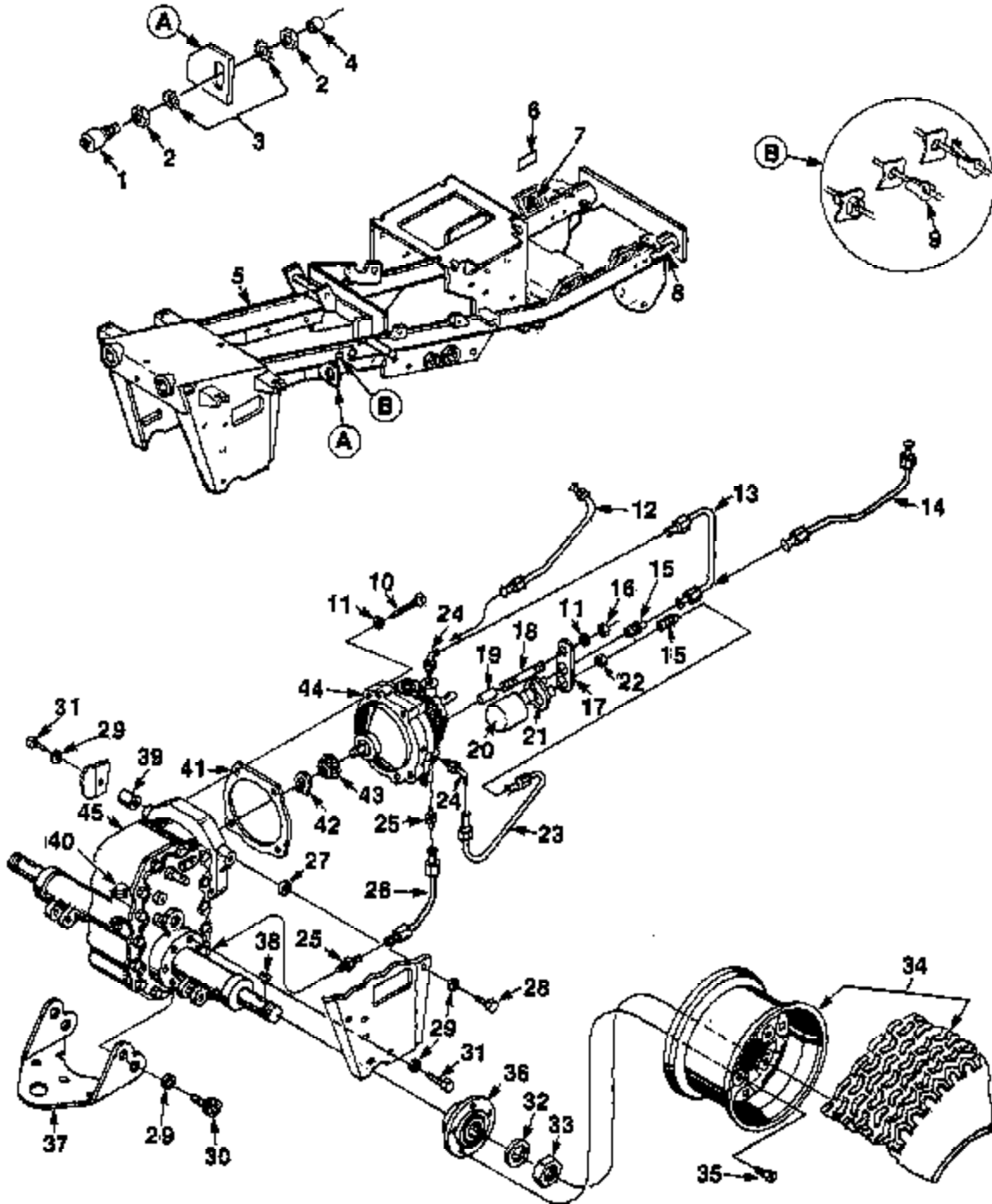


FIGURE 1 PARTS LIST

NO.	PART NO.	QTY.	DESCRIPTION
1	JA-12833-9	1	SWITCH- Safety
2	JA-34378-4	2	NUT- Safety switch mounting
3	JA-44702-2	2	WASHER- Lock 5/8 ext. tooth
4	JA-34378-5	1	BOOT- Safety switch
5	JA-11643-1	1	FRAME ASSEMBLY
6		1	PLATE- Serial no.
7	JA-35936-4	4	ISOLATOR- Engine
8	JA-33861-4	2	DECAL- Warning (heat)
9	JA-35249-7	1	BUSHING- Strain relief
10	JA-40028-6	3	SCREW- 3/8-16 x 2 3/4 hex hd.
11	JA-44614-2	5	WASHER- Lock 3/8 hvy.
12	JA-11642-9	1	TUBE ASSEMBLY- Hydro to valve (14 & 16 H.P.)
13	JA-12988-4	1	TUBE ASSEMBLY- Filter hydro (12 H.P.)
14	JA-12410-4	1	TUBE ASSEMBLY- Valve to filter (14 & 16 H.P.)
15	JA-36247-7	2	CONNECTOR- Male (tube to filter)
16	JA-44311-0	1	NUT- 3/8-16 hex jam, (filter to hydro)
17	JA-35247-5	1	BRACKET- Filter mounting
18	JA-35247-6	1	STUD- Filter to hydro mtg.
19	JA-35247-4	1	SPACER- Filter mtg.
20	JA-13035-5	1	FILTER ASSEMBLY- Filter to hydro
21	JA-12988-6	1	BASE ASSEMBLY- Filter mtg.
22	JA-44474-2	1	NUT- 3/4-16 hex (filter to bracket)
23	JA-12988-2	1	TUBE ASSEMBLY- Filter to hydro
24	JA-35110-7	2	MALE ELBOW
25	JA-35094-7	2	CONNECTOR- male 37° flare
26	JA-35094-6	1	TUBE- Hydrogear to transaxle
27	JA-31274-6	A/R	SPACER
28	JA-40040-4	1	SCREW- 1/2-13 x 1 hex hd.
29	JA-44615-4	6	WASHER- Lock, 1/2 hvy
30	JA-40042-8	2	SCREW- 1/2-13 x 2 3/4 hex hd.
31	JA-40041-0	3	SCREW- 1/2-13 x 1 3/4 hex hd.
32	JA-44618-6	2	WASHER- Lock- 1 1/8 med
33	JA-44384-2	2	NUT- 1 1/8-12 hex jam
34	JA-16179-7	1	WHEEL & TIRE ASSEMBLY (Rear) (14 & 16 H.P.)
	JA-18163-3	1	WHEEL & TIRE ASSEMBLY (Rear) (12 H.P.)
35	JA-31529-8	10	BOLT- Rear wheel
36	JA-21806-0	2	HUB- Rear wheel
37	JA-33051-6	1	DRAW BAR ASSEMBLY
38	JA-46303-8	2	KEY- 1/4 x 1 1/8 woodruff
39	JA-35183-2	1	SPACER
40	JA-35131-3	1	VENT- Air
41	JA-35094-6	1	GASKET- Hydrogear
42	JA-45900-9	1	RING- Retaining
43	JA-33516-6	1	BEVEL PINION
*44	JA-11842-5	1	HYDROGEAR ASSEMBLY
**45	JA-11625-6	1	TRANSAXLE ASSEMBLY

A/R - As Required

*See figure 13 for complete service parts breakdown.

**See figure 12 for complete service parts breakdown.

FIGURE 2
BRAKE & LINKAGE

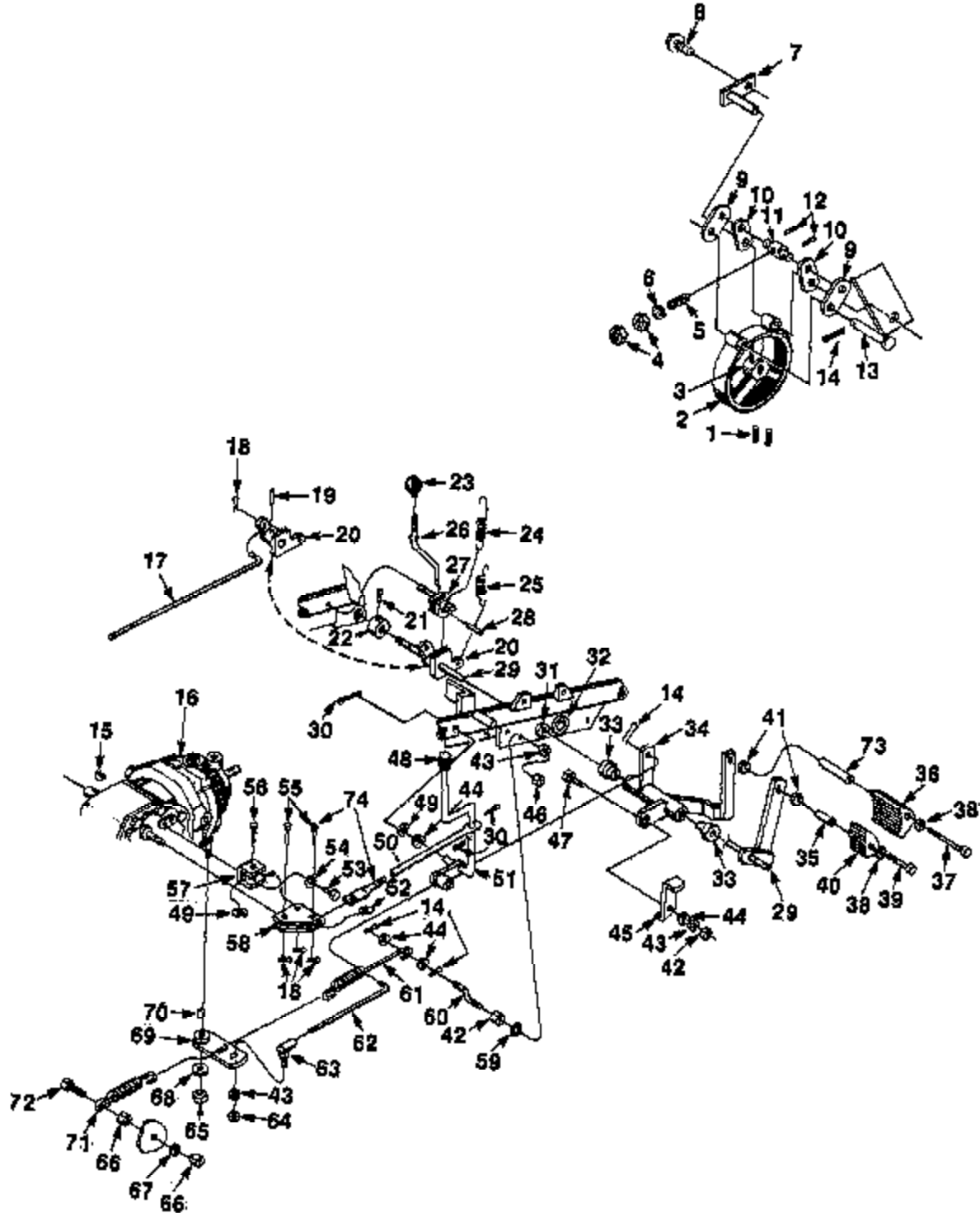


FIGURE 2 PARTS LIST

NO.	PART NO.	QTY.	DESCRIPTION
1	JA-41661-9	2	SCREW- 5/16-18 x 3/8 set
2	JA-12978-3	1	BRAKE BAND & LINING ASSEMBLY
3	JA-21806-9	1	DRUM- Brake
4	JA-44471-8	2	NUT- 5/16-18 hex C/ lock
5	JA-35195-6	1	SPRING- Compression
6	JA-45300-9	1	WASHER- 5/16 SAE Flat
7	JA-16207-7	1	PIVOT BAND ASSEMBLY
8	JA-40880-2	1	SCREW- 1/4-20 x 1/2 w/washer
9	JA-36939-2	2	LINK- Brake long
10	JA-36939-3	2	LINK- Brake short
11	JA-35939-6	1	PIN- Connecting
12	JA-46137-1	2	PIN- Roll 5/32 x 3/4
13	JA-48148-0	1	PIN- 1/2 x 1 3/4 clevis
14	JA-48002-8	4	PIN- 1/8 x 1 cotter
15	JA-48301-7	1	KEY- 3/16 x 3/4 woodruff
16	JA-11825-6	1	TRANSAXLE ASSEMBLY
17	JA-33870-9	1	ROD- Brake
18	JA-48001-4	4	PIN- 3/32 x 3/4 cotter
19	JA-48139-7	1	PIN- 1/4 x 1 1/4 roll
20	JA-16181-2	1	BRAKE LOCK SECTOR ASSEMBLY
21	JA-41200-4	1	SCREW- 1/4-20 x 3/8 set
22	JA-34312-0	1	Dollar
23	JA-31520-8	1	KNOB- Parking brake
24	JA-36916-3	1	SPRING- Brake lock release
25	JA-34527-2	1	SPRING- Brake pedal return
26	JA-36904-1	1	ROD- Brake lock actuator
27	JA-16208-5	1	BRAKE LOCK PAWL ASSEMBLY
28	JA-48135-7	1	PIN- 1/8 x 5/8 roll
29	JA-13080-2	1	BRAKE ARM ASSEMBLY {14 & 18 H.P.}
	JA-13068-5	1	ARM- Brake (12 H.P.)
30	JA-48002-8	3	PIN- 1/8 x 3/4 cotter
31	JA-34613-3	2	BUSHING- Brake shaft pivot
32	JA-35150-8	2	BUSHING- Lift shaft pivot
33	JA-34613-3	2	BUSHING
34	JA-16178-4	1	SPEED CONTROL ASSEMBLY
35	JA-35251-4	1	SPACER- Brake pedal
36	JA-34488-5	1	PEDAL- Hydro
37	JA-40036-0	1	SCREW- 7/16-20 x 4 1/2 hex hd.

* See figure 12 for complete service parts breakdown.

NO.	PART NO.	QTY.	DESCRIPTION
38	JA-45301-8	2	WASHER- 7/16
39	JA-40036-8	1	SCREW- 7/16-20 x 3 hex hd.
40	JA-34502-0	1	PEDAL- Brake
41	JA-44814-8	2	WASHER- Lock 7/16 hvy
42	JA-44476-2	2	NUT- 3/8-16 hex C/lock
43	JA-44814-2	3	WASHER- Lock 3/8 hvy
44	JA-45301-1	4	WASHER- 3/8 SAE
45	JA-35171-1	1	ARM- Reverse
46	JA-44311-0	1	NUT- 3/8-16 hex jam, filter to hydro
47	JA-40026-2	1	SCREW- 3/8-16 hex hd.
48	JA-35163-7	1	KNOB- Shift lever
49	JA-45401-2	2	WASHER- Shakeproof
50	JA-35963-1	1	ROD- Shift
51	JA-14209-2	1	LEVER ASSY- Hydro shaft
52	JA-45402-6	1	WASHER- Shakeproof
53	JA-40010-8	2	SCREW- 1/4-20 x 5/8 hex hd.
54	JA-44818-0	2	WASHER- Lock, 1/4 hvy
55	JA-35214-2	2	PIN
56	JA-48148-7	1	PIN- 3/8 x 1 1/4 clevis
57	JA-35157-3	1	BRACKET- Bell crank mounting
58	JA-33522-7	1	CRANK- Bell
59	JA-44712-6	1	WASHER- Lock 3/8 int tooth
60	JA-36250-0	1	STUD- Cranked hydro control sprng mnt.
61	JA-36250-1	1	SPRING- Hydro control
62	JA-33627-2	1	ROD- Speed control
63	JA-31008-8	1	JOINT- Ball
64	JA-44311-2	1	NUT- 3/8-24 hex
65	JA-44475-8	1	NUT- 1/2-13 hex
66	JA-44380-6	2	NUT- 5/16-18 hex
67	JA-44818-8	1	WASHER- Lock 5/16 hvy
68	JA-45301-7	1	WASHER- 1/2 flat SAE
69	JA-15898-2	1	HYDRO ACTUATING ARM ASSY.
70	JA-46300-5	1	KEY- 1/8 x 5/8 woodruff
71	JA-35055-8	1	SPRING- Hydro control neutralizer
72	JA-40019-0	1	SCREW- 6/16-18 x 1 1/4 hex hd.
73	JA-35251-3	1	SPACER- Hydro pedal
74	JA-35963-2	1	PIN- Adjusting

FIGURE 3
ENGINE & DRIVE SHAFT

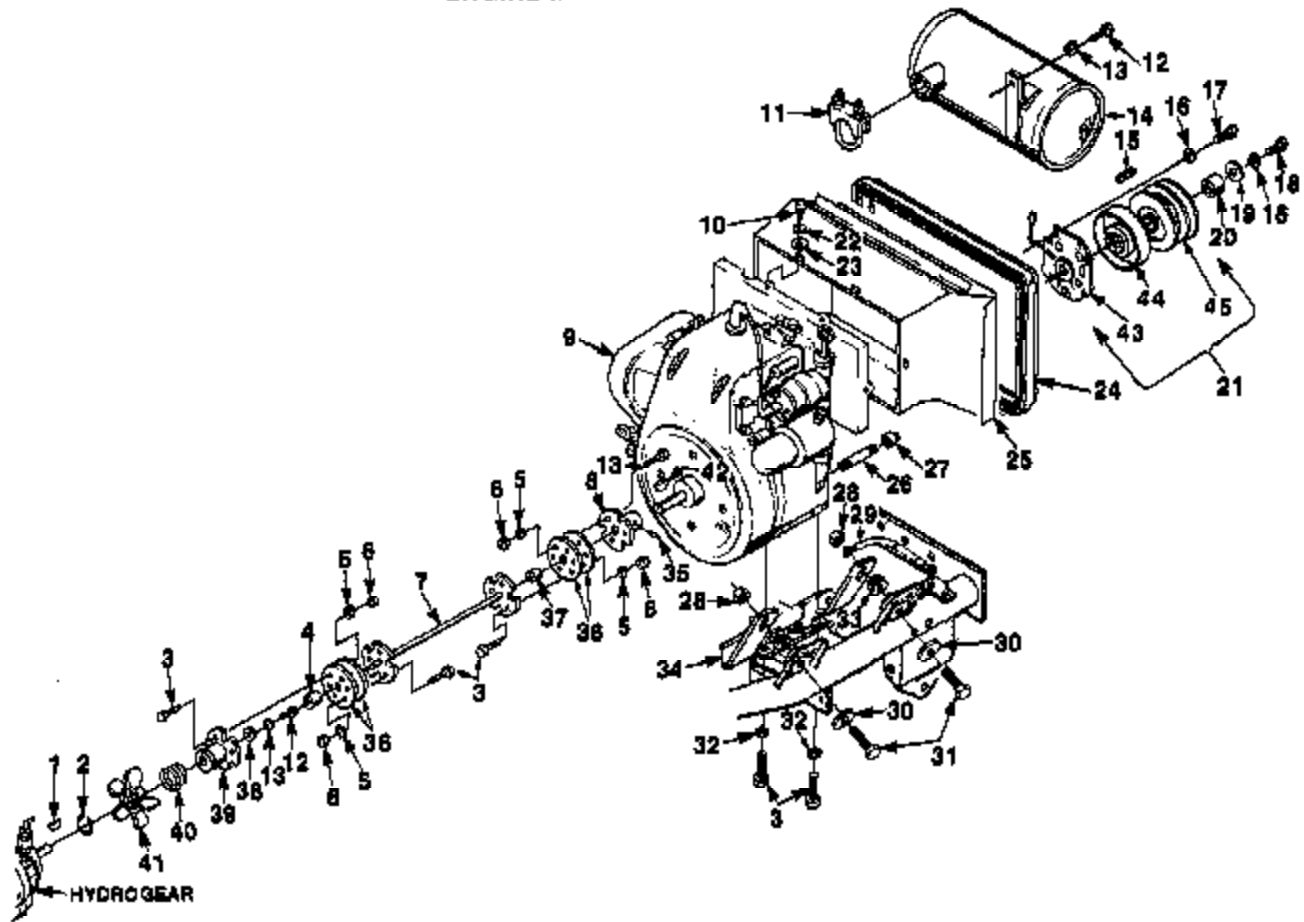


FIGURE 3
PARTS LIST

NO.	PART NO.	QTY.	DESCRIPTION
1	JA-46302-9	1	KEY- 3/16 x 5/8 woodruff
2	JA-46846-6	1	RING- Retaining
3	JA-40028-2	12	SCREW- 3/8-16 x 1 hex hd.
4	JA-31367-7	1	BEARING- Drive shaft pivot
5	JA-45301-1	12	WASHER- 3/8 flat
6	JA-44478-2	12	NUT- 3/8-16 hex C/lock
7	JA-12964-3	1	COUPLING SHAFT ASSEMBLY
8	JA-12964-4	1	FRONT COUPLING ASSEMBLY
9	JA-99030-5	1	ENGINE- Kohler K-341, AQS, 18 H.P.
	JA-99030-7	1	ENGINE- Kohler K-301, AQS, 12 H.P.
	JA-99030-8	1	ENGINE- Kohler K-321, AQS, 14 H.P.
10	JA-40010-6	8	SCREW- 1/4-20 x 5/8
11	JA-34885-8	1	CLAMP- Muffler mounting
12	JA-40018-8	1	BOLT- 5/16-18 x 7/8
13	JA-44813-6	1	WASHER- Lock 5/16 hvy
14	JA-36883-0	1	MUFFLER ASSEMBLY
15	JA-35184-9	1	KEY- Electric clutch mtg.
16	JA-44614-8	1	LOCKWASHER- 7/16 hvy
17	JA-40083-0	4	SCREW- 7/16 x 3/4 hex hd
18	JA-40087-2	1	SCREW- 7/16 x 20 x 1 1/4 hex hd
19	JA-34584-8	1	WASHER- Clutch retainer
20	JA-35163-5	1	SPACER- Electric clutch mtg.
21	JA-12411-2	1	WARNER ELECTRIC P.T.O. Clutch
22	JA-44613-0	8	LOCKWASHER- 1/4 hvy

NO.	PART NO.	QTY.	DESCRIPTION
23	JA-46200-4	8	WASHER- 1/4 flat
24	JA-36895-8	1	BEAL- Engine duct
26	JA-12187-0	1	AIR DUCTING ASSY (Inc. ref. #24).
26	JA-47177-2	1	NIPPLE- 1/4 NPT 3" long
27	JA-47244-7	1	CAP- 1/4 NPT Pipe
28	JA-44481-0	4	NUT- 3/8-16 hex flex lock
29	JA-99229-0	1	GROUND ENGINE TO FRAME
30	JA-36805-5	4	WASHER
31	JA-40027-0	4	BOLT- 3/8-16 x 2 hex hd.
32	JA-44614-2	4	LOCKWASHER- 3/8 hvy
33	JA-45200-8	A/R	WASHER- 3/8 flat
34	JA-39508-2	2	BRACKET- Engine mtg.
35	JA-41208-3	1	SCREW- 3/8-16 x 1/2 sq. hd. set
36	JA-85075-6	4	DISC- Coupling
37	JA-36163-4	1	BUSHING- Drive shaft pivot
38	JA-30853-7	1	WASHER
39	JA-15848-3	1	COUPLING ASSEMBLY
40	JA-31731-8	1	SPRING FAN MOUNTING
41	JA-33521-9	1	FAN
42	JA-46302-5	1	KEY- 3/16 x 1 woodruff
43	JA-51897-0	1	FIELD- Assembly
44	JA-67001-9	1	ROTOR
45	JA-61897-1	1	ARMATURE- Assembly

FIGURE 4
POWER TAKE OFF ASSEMBLY (PTO)

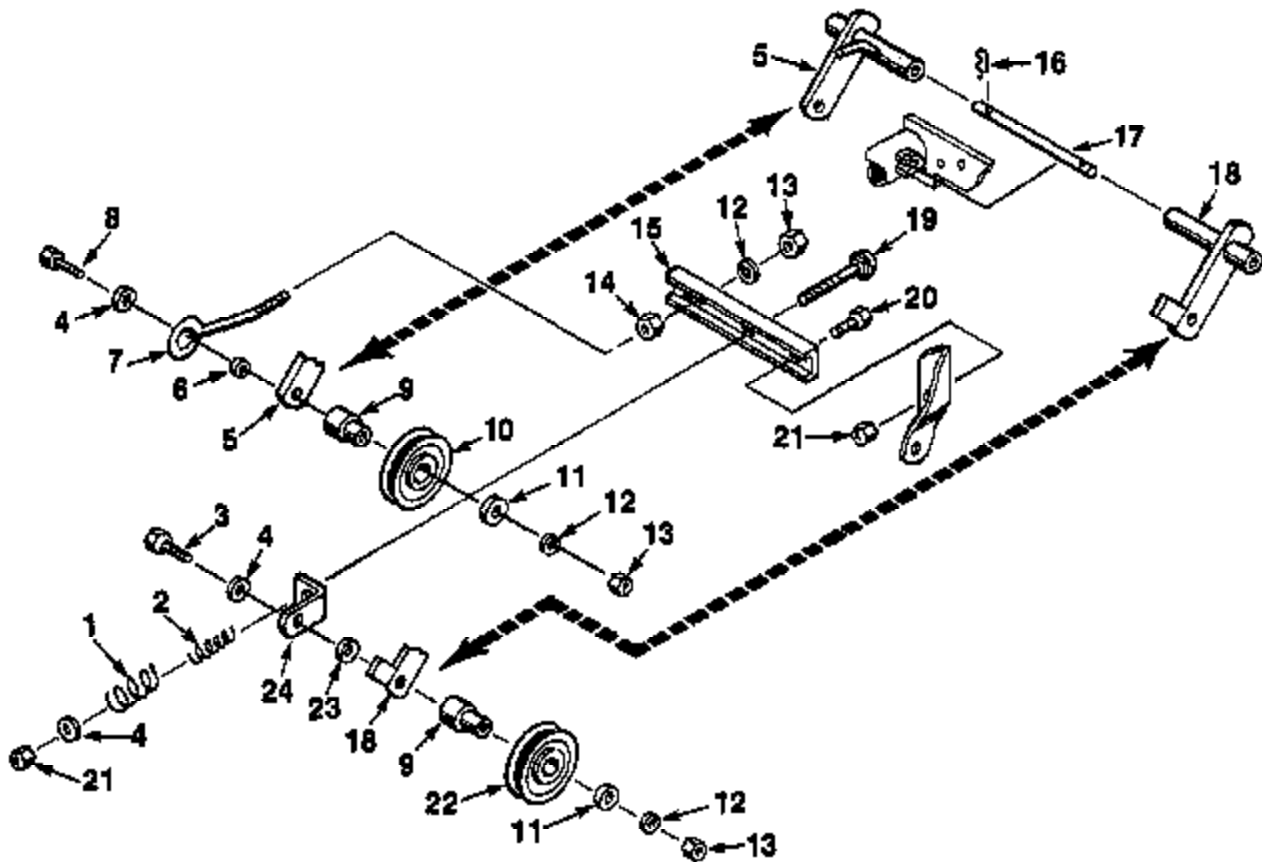


FIGURE 4
PARTS LIST

NO.	PART NO.	QTY.	DESCRIPTION
1	JA-35374-7	1	SPRING- Comp. Idler tension (outside)
2	JA-35374-8	1	SPRING- Comp. Idler tension (inside)
3	JA-40027-2	1	SCREW- 3/8-16 x 2 1/4 hex hd.
4	JA-31071-1	1	WASHER
5	JA-13022-4	1	FIXED IDLER ASSEMBLY
6	JA-35781-4	1	SPACER
7	JA-35405-7	1	ROD- Fixed idler retaining
8	JA-40027-4	1	SCREW- 3/8-16 x 2 1/2 hex hd.
9	JA-34495-2	2	IDLER- Stand off
10	JA-35081-4	1	PULLEY- Idler
11	JA-46301-1	2	WASHER
12	JA-44814-2	3	WASHER- Lock, 3/8 hvy.
13	JA-44911-0	3	NUT- 3/8-16 hex

NO.	PART NO.	QTY.	DESCRIPTION
14	JA-44381-0	1	NUT- 3/8 hex jam
15	JA-39641-8	1	BRACKET- Idler spring & adjusting screw
16	JA-46031-6	2	COTTER HAIRPIN
17	JA-35206-7	1	ROD- Idler pivot
18	JA-13084-0	1	IDLER ARM & SPRING TENSION ASSY.
19	JA-44188-0	1	BOLT- 3/8-16 x 5-1/2 Carr.
20	JA-40026-2	2	SCREW- 3/8-16 x 1 hex hd.
21	JA-44481-0	1	NUT- 3/8-16 hex flex lock
22	JA-33081-6	1	PULLEY- Idler
23	JA-35259-4	1	SPACER
24	JA-50097-1	1	BRACKET- Idler spring retaining

FIGURE 5 PARTS LIST

NO.	PART NO.	QTY.	DESCRIPTION
1	JA-44187-8	2	BOLT- 3/8-18 x 1 1/4 Carr
2	JA-33673-8	1	BRACKET- Steering gear
3	JA-44614-2	4	WASHER- Lock 3/8 hvy
4	JA-44311-0	2	NUT- 3/8-16 hex
5	JA-40028-4	2	SCREW- 3/8-16 x 1 1/4 hex hd
6	JA-12192-6	1	STEERING GEAR ASSEMBLY
7	JA-44180-2	2	BOLT- 5/16-18 x 3/4 carr
8	JA-44382-0	2	NUT- 1/2-20 hex jam
9	JA-44815-4	2	WASHER- Lock 1/2 hvy
10	JA-35334-0	1	BEARING
11	JA-46301-7	1	KEY- Woodruff
12	JA-40019-8	1	BOLT- 5/16-18 x 2
13	JA-44722-0	2	WASHER- Lock 1/2 int tooth
14	JA-18153-5	2	BALL JOINT ASSEMBLY
15	JA-44362-0	2	NUT- 1/2-20 hex jam
16	JA-14187-3	1	STEERING ARM & HUB ASSEMBLY
17	JA-44813-8	1	WASHER- Lock 5/18 hvy
18	JA-44310-8	2	NUT- 5/16-18 hex
19	JA-44813-6	2	WASHER- Lock 5/18 hvy
20	JA-33525-7	1	CAP- Steering wheel
21	JA-44382-8	1	NUT- 5/8-18 hex jam
22	JA-19077-2	1	DRAG LINK ASSEMBLY
23	JA-33052-5	1	STEERING WHEEL
24	JA-16481-5	2	BALL JOINT ASSEMBLY
25	JA-35154-7	1	ROD- Tie
26	JA-36179-8	2	BUSHING
27	JA-12192-7	1	SPINDLE ASSEMBLY- L H
28	JA-46140-4	2	PIN- 5/16 x 1 1/2 roll
29	JA-18180-0	1	STEERING ARM ASSEMBLY
30	JA-46138-3	1	PIN- Roll 3/16 x 1
31	JA-35886-6	1	PIN- Anti-rotation
32	JA-33863-0	1	PIN- Front axle mtg
33	JA-32499-6	1	WASHER- Spindle retainer R H
34	JA-47121-9	2	FITTING- Grease
35	JA-16160-1	1	FRONT AXLE ASSEMBLY (Incl Ref #26 & 34)
36	JA-98007-2	1	SPINDLE ASSEMBLY R H
37	JA-82810-6	4	BEARING- Front wheel
**38	JA-12192-5	2	TIRE ASSEMBLY (front) (Incl 37 & 42)
39	JA-35842-3	2	CAP- Front wheel hub
40	JA-48004-0	2	PIN- 5/32 x 1 1/4 cottar
41	JA-30245-8	2	WASHER- Front wheel mounting
42	JA-47121-4	2	GREASE FITTING- Front wheel

*See figure 11 for complete service parts breakdown.

**See your dealer for service

FIGURE 6 PARTS LIST

NO.	PART NO.	QTY.	DESCRIPTION
*1	JA-46147-3	1	PIN- Clevis
*2	JA-37527-5	1	SPACER
*3	JA-46301-2	1	HAIRPIN- Cotter
*4	JA-14196-1	1	POSITION CONTROL LINK ASSY, L.H.
*5	JA-33653-4	1	LINK- Micro-adjust R.H.
*6	JA-44666-6	2	NUT- 1/2-20 hex slotted
7	JA-41201-4	1	SCREW- 5/16-16 x 1/2 set
8	JA-48003-6	1	PIN- 1/8 x 2 cotter
9	JA-13007-1	1	LIFT ARM ASSEMBLY
*10	JA-35909-5	1	BRACKET- Spring attachment
*11	JA-46138-0	2	PIN- Roll 3/16 x 3/4
*12	JA-18190-0	1	BRACKET- Slide
*13	JA-46301-7	2	WASHER- 17-32" SAE Flat
*14	JA-48135-9	2	PIN- Roll 1/8 x 3/4
*15	JA-33653-1	1	ROD- Micro-adjust
16	JA-45301-1	8	WASHER- 3/8 SAE Flat
*17	JA-46401-2	1	WASHER- Shakeproof
*18	JA-46002-6	2	PIN- 1/8 x 3/4 cotter
*19	JA-35887-1	1	TUBE- Lock
*20	JA-36896-0	1	LOCK- Position control
*21	JA-44382-0	1	NUT- 1/2-20 hex jam
*22	JA-36909-3	1	KNOB- Micro-adjust
*23	JA-44310-2	2	NUT- 1/4-20 hex
*24	JA-44813-0	2	WASHER- Lock 1/4 hvy
*25	JA-35163-7	1	KNOB- Lift handle
*26	JA-35163-0	1	LEVER- Valve shift
*27	JA-46002-6	2	PIN- 1/8 x 3/4 cotter
*28	JA-37527-4	1	PIN- Adjusting
*29	JA-44311-0	1	NUT- 3/8-16 hsx
*30	JA-38924-7	1	ROD- Shift
*31	JA-46136-2	1	PIN- Roll 3/32 x 3/4
*32	JA-36909-4	1	SPRING
*33	JA-40012-2	1	SCREW- 1/4-20 x 2 1/2 hex hd.
*34	JA-35908-8	1	ELBOW- Swivel
*35	JA-35792-1	1	RESTRICTOR- Ret. hydraulic line
*36	JA-35139-9	1	HOSE- Elbow (to valve)
*37	JA-16179-9	2	HOSE ASSEMBLY
*38	JA-40013-2	1	SCREW- 1/4-20 x 2 3/4 hex
*39	JA-45200-4	1	WASHER- 1/4 flat
*40	JA-31328-0	1	SPACER- Upper bolt
*41	JA-35918-6	1	FEMALE- Run tee
*42	JA-35110-7	2	ELBOW- Tube to valve- VFP
*43	JA-11642-9	1	TUBE ASSEMBLY- Valve to hydro
*44	JA-12410-4	1	TUBE ASSEMBLY- Valve to filter

NO.	PART NO.	QTY.	DESCRIPTION
*45	JA-35407-7	1	CAP
46	JA-35174-9	1	SPACER- Lift arm
**47	JA-44310-6	2	NUT- 5/16- 18 hex
**48	JA-44613-6	2	WASHER- Lock 5/16 hvy
**49	JA-33522-4	1	QUADRANT- Lift
**50	JA-40018-8	2	SCREW- 5/16-18 x 1 hex hd.
**51	JA-84183-3	1	GRIP- Lift handle
**52	JA-31534-9	1	PLUNGER- Lift lever
**53	JA-48135-5	1	PIN- 1/8 x 1/2 roll
**54	JA-31059-0	1	COLLAR- Lift lever plunger
**55	JA-38012-3	1	ROD- Lift lever
**56	JA-12197-7	1	HANDLE LIFT
**57	JA-40019-0	2	SCREW- 5/16-18 x 1 1/4 hex hd.
58	JA-12197-6	1	LIFT ARM & PIVOT WELDMENT, 12 H.P.
	JA-13063-8	1	LIFT ARM & PIVOT WELDMENT 14 & 16 H.P.
59	JA-31043-7	1	KEY- 3/16 x 3/16 x 2 3/8
**60	JA-46001-2	1	PIN- 3/32 x 5/8 cotter
**61	JA-45200-9	4	WASHER- 5/16 flat
**62	JA-37568-0	1	SPRING
**63	JA-13074-2	1	PIN- Latch
**64	JA-44577-7	2	NUT- 5/16-18 hex (lock)
**65	JA-44360-6	2	NUT- 5/16-18 hex
**66	JA-35942-7	1	GUIDE
**67	JA-40010-4	2	SCREW- 1/4 20 x 1/2 hex
68	JA-44476-2	8	NUT- 3/8- 16 hex c/lock
69	JA-35922-4	1	CROSSBAR- Connecting link
70	JA-35158-5	8	BOLT- Linkage mounting
71	JA-35158-7	8	BUSHING- Rear hanger pivot
72	JA-44475-8	2	NUT- 1/2-13 hex c/lock
73	JA-13068-3	1	HANGER- Front
74	JA-13068-2	1	HANGER- Rear 12 HP
	JA-13068-1	1	HANGER- Rear 14 & 16 H.P.
*75	JA-50236-5	1	CYLINDER- 2" I.H.I. (Note 1)
76	JA-35236-0	1	SPRING
*77	JA-46003-0	7	PIN- 1/8 x 1 1/4 cotter
*78	JA-46002-6	1	PIN- 1/8 x 1 cotter
79	JA-34548-6	7	BUSHING- Lift link
80	JA-15685-0	1	LIFT LINK ASSEMBLY
81	JA-31350-9	1	WASHER
82	JA-46002-6	1	PIN- Cotter 1/8 x 1
**83	JA-50251-1	1	VALVE- Lift (Note 2)
84	JA-33653-8	2	LINK- Connecting

* 14 and 16 H.P. only.
** 12 H.P. only.

NOTE 1.: For service of cylinder, order part no. JA-50236-5.
For service of seal, order part no. JA-50236-6.

NOTE 2.: For service of valve see sketches.
For replacement valve order no. JA-50251-1.

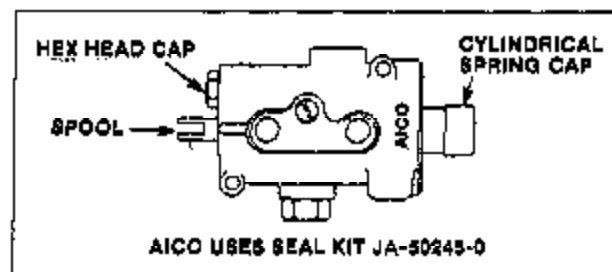
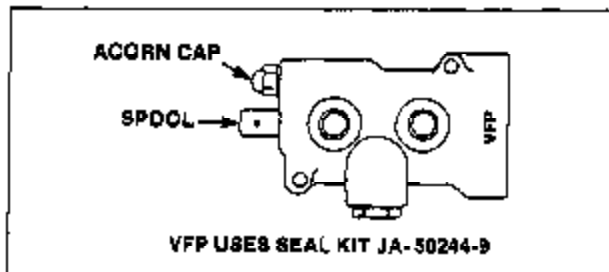


FIGURE 7
INSTRUMENT PANEL, BATTERY & FUEL TANK

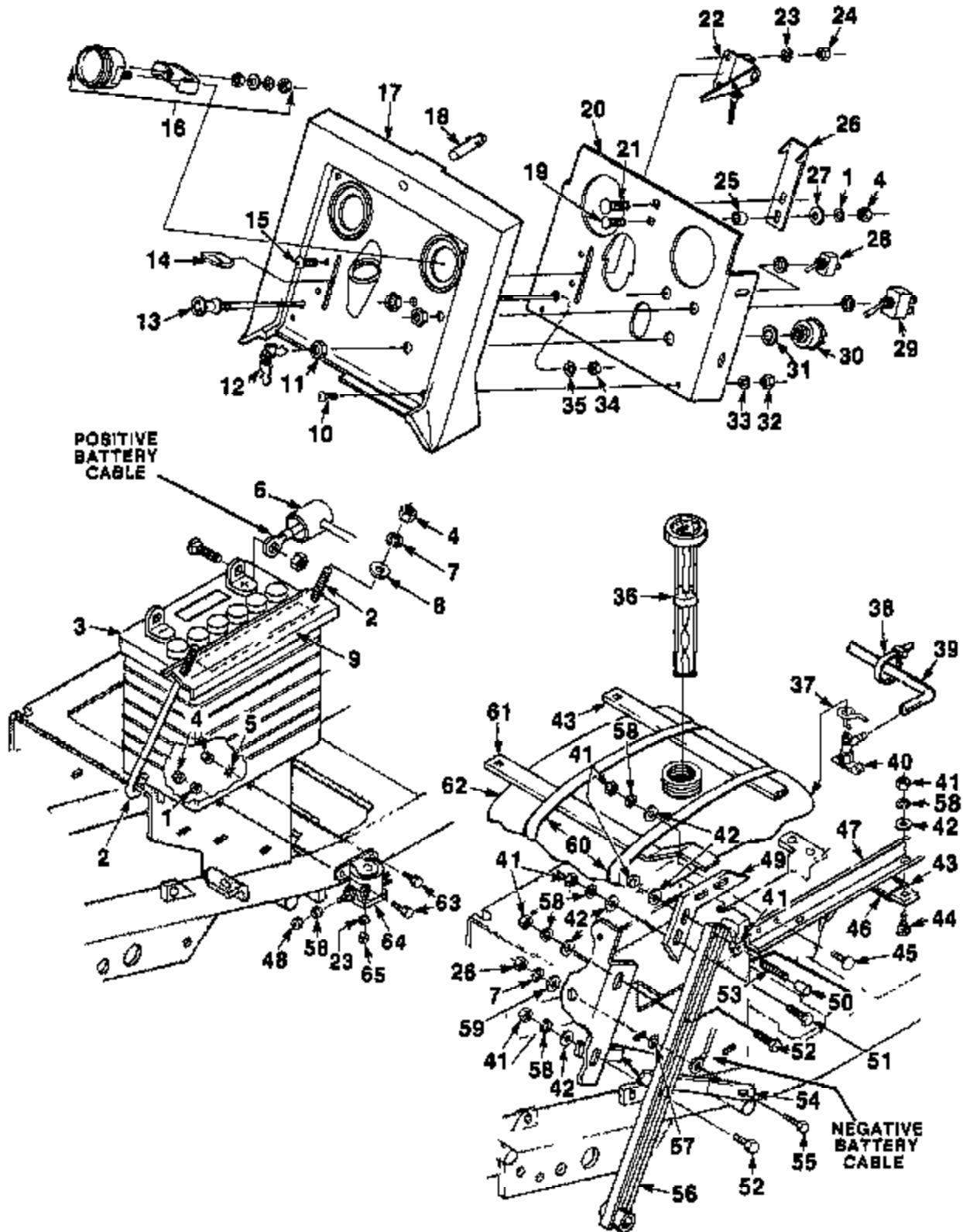


FIGURE 7 PARTS LIST

NO.	PART NO.	QTY.	DESCRIPTION
1	JA-44813-0	2	WASHER- Lock 1/4 hvy
2	JA-35846-4	2	ROD- Battery hold down
3	JA-35843-2	1	BATTERY
4	JA-44310-2	2	NUT- 1/4-20 hex
5	JA-44730-4	1	WASHER- Lock 1/4 ext. tooth
6	JA-35904-4	1	CAP- Positive battery terminal
7	JA-44813-0	3	WASHER- Lock 1/4 hvy.
8	JA-45200-4	2	WASHER- 1/4 SAE Flat
9	JA-33874-0	1	BRACKET- Battery
10	JA-40986-8	4	SCREW- 8-32 x 1/2 L.G. slotted C/R hd.
11	JA-35896-8	1	NUT
12	JA-34308-0	1	KEY- (set of 2)
13	JA-13065-7	1	CHOKE CONTROL ASSEMBLY
14	JA-34583-8	1	KNOB- Throttle control
15	JA-40391-4	2	SCREW #10-20 x 3/4 C/R truss hd.
16	JA-10791-7	1	ANMETER
17	JA-39506-1	1	PANEL- Dash
18	JA-35837-6	1	ACTIVATOR- Hood release
19	JA-44004-6	1	SCREW- 1/4-20 x 1 carr
20	JA-39505-6	1	PLATE- Instrument
21	JA-46353-0	1	RIVET- 1/4 x 1 Button hd
22	JA-12185-8	1	THROTTLE- Control & Cable
23	JA-44811-8	2	WASHER- Lock #10 hvy
24	JA-44431-0	2	NUT- #10-24 hex
25	JA-35063-8	1	SPACER
26	JA-83954-0	1	LATCH- Hood lock spring
27	JA-45302-3	1	WASHER- 1/4 narrow std.
28	JA-15899-2	1	SWITCH- Headlight 14 & 18 HP only
29	JA-13061-5	1	SWITCH- Electric clutch
30	JA-12984-6	1	SWITCH- Ignition (incl. Ref #12, 11 & 31)
31	JA-44722-1	1	WASHER- Lock int. tooth
32	JA-44430-6	4	NUT- 8-32 hex
33	JA-44511-2	4	WASHER- Lock
34	JA-44381-2	1	NUT- 3/8-24 hex jam
36	JA-44701-4	1	WASHER- Lock 3/8 ext. tooth
38	JA-13069-4	1	CAP- Fuel tank & Gauge 12 & 14 HP
	JA-16179-3	1	CAP- Fuel tank & Gauge 16 HP.

NO.	PART NO.	QTY.	DESCRIPTION
37	JA-35981-1	1	CLAMP- Fuel valve
38	JA-47316-4	1	STA-STRAP- 18 HP only
39	JA-35888-7	1	LINE- Fuel 12 & 14 HP
	JA-37511-0	1	LINE- Fuel 16 HP
40	JA-10865-7	1	SHUT-OFF VALVE ASSY.
41	JA-44310-6	16	NUT- 5/16-18 hex
42	JA-45300-9	16	WASHER- 5/16 flat
43	JA-33653-7	1	SUPPORT- Gas tank, (front)
44	JA-44008-0	4	BOLT 5/16-18 x 7/8 carr.
45	JA-44007-8	4	BOLT- 5/16-18 x 3/4 carr.
46	JA-33923-6	2	SLEEVE- Strap
47	JA-13060-8	1	RAIL- R.H.
	JA-13060-7	1	RAIL- L.H.
48	JA-44980-8	2	NUT- 5/16-24 hex jam
49	JA-33653-9	2	BRACKET- Panel Mtg.
50	JA-35307-7	2	TIP- Rod
51	JA-40016-6	2	SCREW- 5/16-18 x 7/8 hex hd.
52	JA-40018-4	4	SCREW- 5/16-18 x 3/4 hex hd.
53	JA-37553-5	2	STUD- Adjuster
54	JA-33653-8	2	STRAP- Console support
55	JA-40011-2	2	SCREW- 1/4-20 x 1 hex hd
56	JA-13060-8	2	ARM- Console
57	JA-44751-0	1	WASHER- Lock 1/4 ext. int tooth
58	JA-44813-6	16	WASHER- Lock 5/16 hvy
59	JA-45302-3	3	WASHER- 1/4 flat
60	JA-50242-5	1	STRAP SET- Fuel tank (12 & 14 H.P.)
	JA-50242-4	1	STRAP SET- Fuel tank (16 H.P.)
61	JA-33673-9	1	SUPPORT- Gas tank (rear)
62	JA-39504-4	1	TANK- Fuel, 3 Gal., 12 & 14 H.P.
	JA-39504-5	1	TANK- Fuel, 5 Gal., 16 H.P.
63	JA-40010-8	2	SCREW- 1/4-20 x 3/4 hex hd.
64	JA-12807-0	1	SOLENOID- Starter
65	JA-44431-2	2	NUT- #10-32 hex

FIGURE 8
REAR FENDER & SEAT

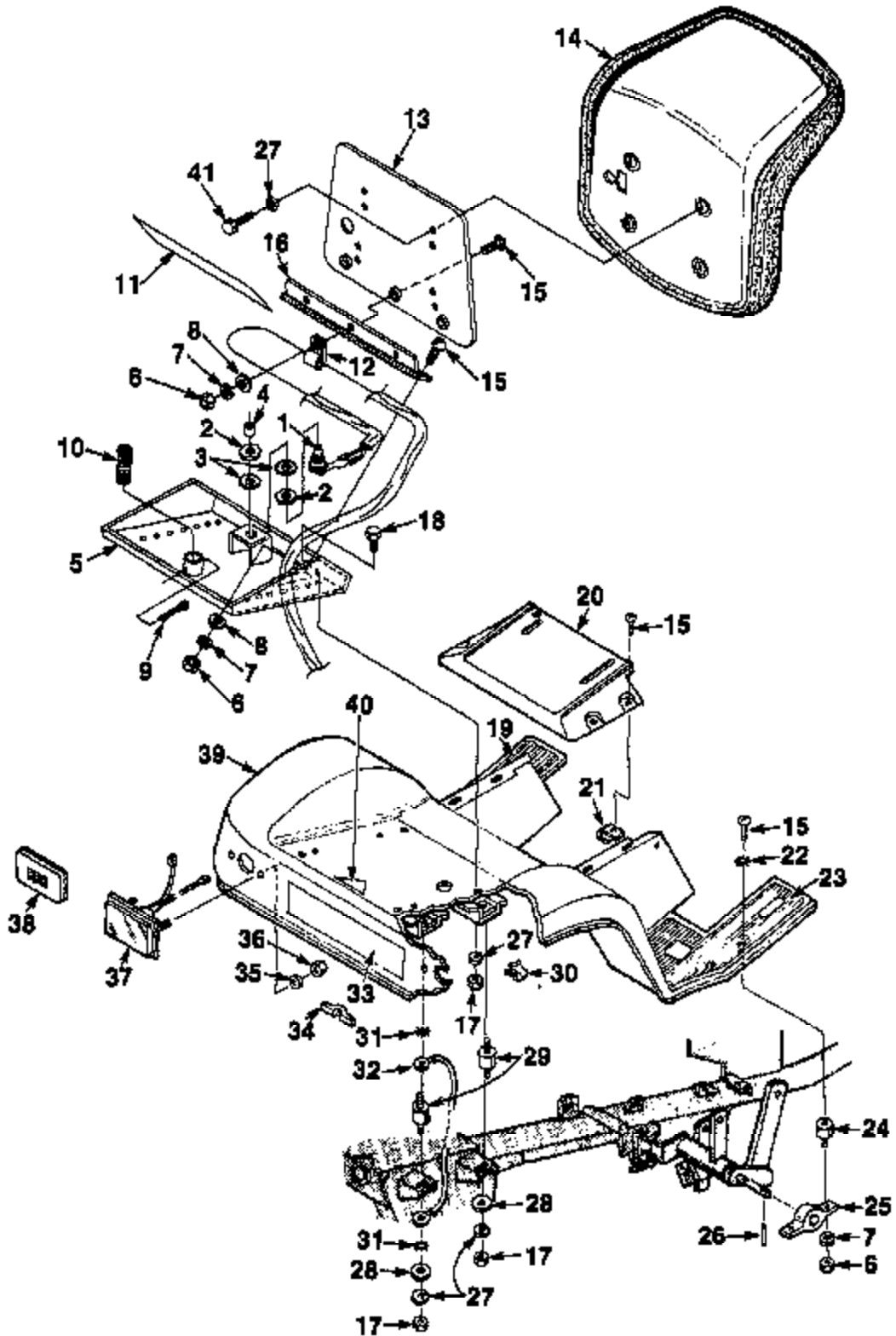


FIGURE 8 PARTS LIST

NO.	PART NO.	QTY.	DESCRIPTION
1	JA-12633-9	2	SWITCH- Safety
2	JA-34673-4	2	NUT- Safety switch
3	JA-44702-2	2	WASHER- Lock Int.
4	JA-34378-5	1	BOOT- Safety switch
5	JA-99116-1	1	BOX- Tool
6	JA-44310-2	4	NUT- 1/4-20 hex
7	JA-44613-0	4	WASHER- Lock 1/4 hvy
8	JA-46200-4	6	WASHER- 1/4 flat
9	JA-46003-6	1	PIN- Cotter
10	JA-35926-6	1	SPRING
11	JA-38017-6	1	DECAL- Instruction
12	JA-30315-9	1	CLIP- Seat switch mtg.
13	JA-33053-0	1	PLATE- Seat mounting
14	JA-12408-4	1	SEAT ASSEMBLY
15	JA-40401-4	4	SCREW- 1/4-20 x 1/2 Phil.
16	JA-35166-6	1	HINGE- Seat
17	JA-44310-6	4	NUT- 5/16-18 hex
18	JA-40016-0	4	SCREW- 5/16 x 1/2 hex hd 12 HP only
19	JA-39012-1	1	PAD- Foot L.H.
20	JA-39505-0	1	INSERT- Body
21	JA-44524-3	4	NUT- Tinnerman
22	JA-44701-0	4	WASHER- Lock 1/4 Ext. tooth
23	JA-39012-0	1	PAD- Foot R.H.
24	JA-35685-8	4	MOUNTING- Front fender
25	JA-35351-5	2	BRACKET- Footboard
26	JA-46139-7	4	PIN- Roll, 1/4 x 1 1/4
27	JA-44613-6	4	WASHER- Lock 5/16 hvy
28	JA-45300-6	4	WASHER- Plain 5/16 SAE
29	JA-35175-6	4	MOUNTING- Flexible
*30	JA-44527-1	2	CLIP- Tinnerman
*31	JA-44730-2	2	WASHER- Lock, 5/16 Ext, tooth
*32	JA-35185-5	1	WIRE- Ground body
33	JA-99034-0	1	DECAL- Name
*34	JA-35230-2	2	RETAINER- Tail light wire
*35	JA-44611-6	4	WASHER- Lock #10 hvy
*36	JA-44431-2	4	NUT- 10-32 hex
37	JA-12967-7	2	TAIL LIGHT ASSEMBLY 16 H.P.
38	JA-33575-7	2	TAIL LIGHT REFLECTOR 12 & 14 H.P.
39	JA-89010-2	1	REAR FENDER & BODY ASSEMBLY
40		1	DECAL- OPEI
41	JA-40018-2	4	SCREW- 5/16 x 5/8 hex hd *16 H.P. only

* 16 H.P. Only

FIGURE 9
FRONT COWLING

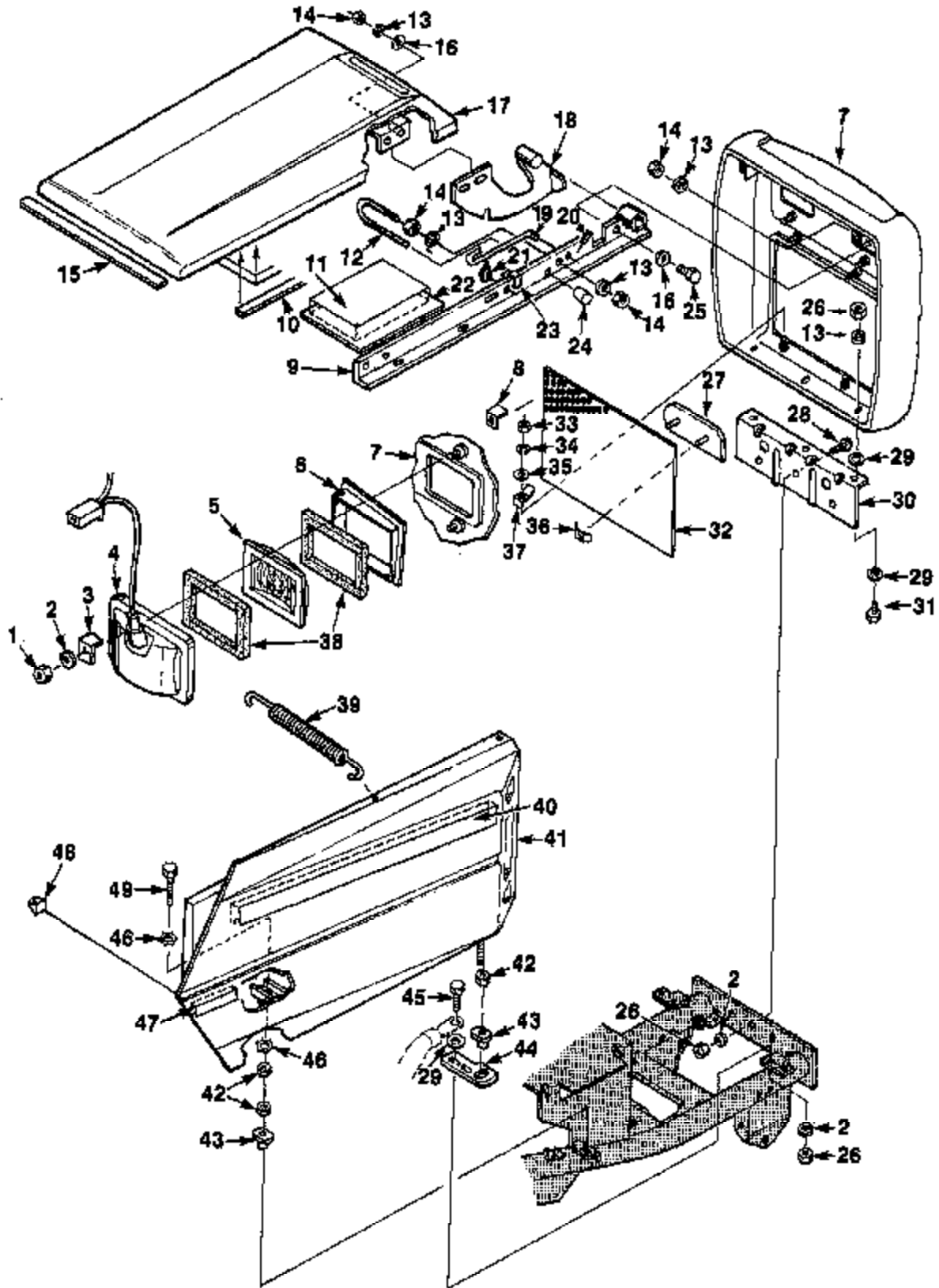
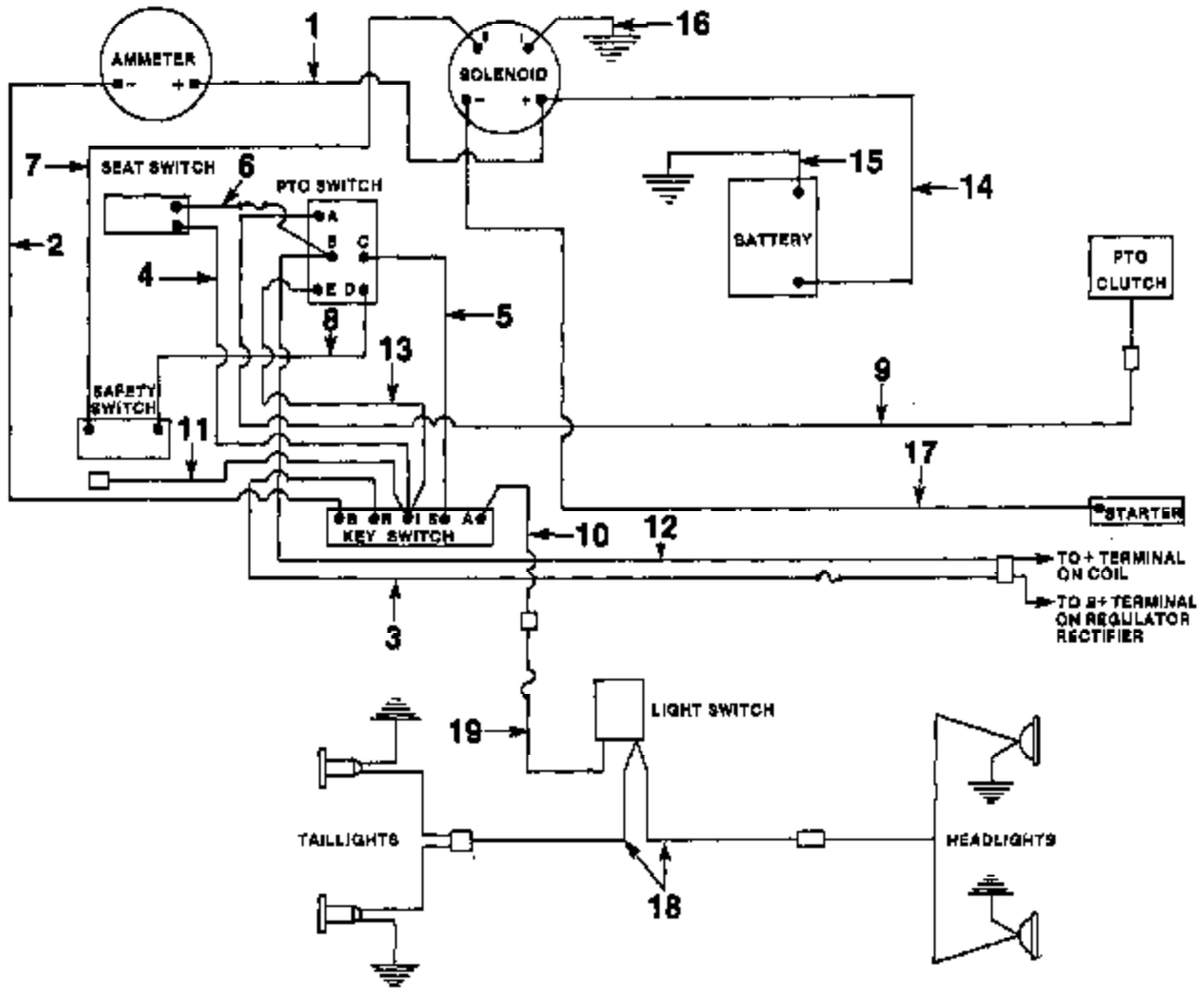


FIGURE 9 PARTS LIST

NO.	PART NO.	QTY	DESCRIPTION
1	JA-44310-2	4	NUT- 1/4-20 hex
2	JA-44613-0	4	WASHER- Lock 1/4 hvy
3	JA-35893-5	4	CLIP- Headlight mounting
4	JA-12193-0	1	HEADLIGHT ASSEMBLY (Incl 5 & 3B) 14 & 16 H P
5	JA-33943-3	2	LENS
6	JA-37567-1	1	INSERT- Headlight (L H)
	JA-37567-2	1	INSERT- Headlight (R H)
7	JA-99010-4	1	COWLING- Front
8	JA-35993-5	2	CLIP- Grill mtg top
9	JA-13060-6	1	RAIL- Hood support (R H)
	JA-13060-7	1	RAIL- Hood support (L H)
10	JA-35888-6	2	STRIP- Hood spacer
11	JA-33664-0	1	DECAL- Battery danger
12	JA-37563-4	2	ADJUSTER- (Incl ref #24)
13	JA-44913-6	2	WASHER- Lock 5/16 hvy
14	JA-44310-6	2	NUT- 5/16-18 hex
16	JA-35826-8	1	STRIP- Hood spacer
18	JA-45200-6	2	WASHER- 5/16 flat
17	JA-99010-6	1	HOOD ASSEMBLY
18	JA-12192-8	1	HOOD HINGE ASSEMBLY, R H
	JA-12192-9	1	HOOD HINGE ASSEMBLY, L H
19	JA-33940-0	1	ROD- Hood support
20	JA-46135-8	1	PIN- Roll
21	JA-37562-7	1	CLIP- Hood support rod
22	JA-35923-7	1	COVER- Battery
23	JA-35248-6	1	CLIP- Headlight wire mounting (14 & 16 H P)
24	JA-35307-7	2	TIP- Probe
25	JA-40018-8	2	SCREW- 5/16-18 x 1 hex hd
26	JA-44310-2	2	NUT- 1/4-20 hex
27	JA-35893-8	1	INSERT- Front name (12 H P)
	JA-35894-0	1	INSERT- Front name (14 H P)
	JA-35894-5	1	INSERT- Front name (16 H P)
28	JA-40401-8	3	SCREW- 1/4-20 x 3/4 C/R
29	JA-46302-3	8	WASHER- 9/32 flat
30	JA-39009-7	1	BRACKET- Front cowling
31	JA-40010-6	2	SCREW- 1/4-20 x 5/8 hex hd
32	JA-99012-7	1	GRILL- Front cowling
33	JA-44431-0	4	NUT- 10-24 hex
34	JA-44611-8	4	WASHER- Lock #10 hvy
35	JA-45200-2	4	WASHER- #10 flat
36	JA-44662-2	2	NUT- Push
37	JA-35917-5	2	CLIP- Grip mtg bottom
38	JA-54548-8	4	GASKET- 14 & 16 H P
	JA-54548-8	2	GASKET- 12 H P
38	JA-35890-6	1	SPRING- Extension
40	JA-98040-0	2	DECAL- Side panel
41	JA-18171-6	1	WELDMENT- Side panel (R H)
	JA-18171-4	1	WELDMENT- Side panel (14 & 16 Hydros only) (R H)
	JA-18171-5	1	WELDMENT- Side panel (L H)
42	JA-44311-0	4	NUT- 3/8-18 hex
43	JA-35888-1	4	NUT- Side panel adjusting
44	JA-35887-8	2	SUPPORT- Side panel adj
45	JA-40011-2	4	SCREW- 1/4-20 x 1 hex hd
46	JA-44701-4	4	WASHER- Lock Ext 3/8
47	JA-33957-7	1	DECAL- Lift lever (12 H P)
48	JA-37537-0	2	RECESS- Bumper
49	JA-35923-5	2	SCREW- 3/8-16 x 2 3/4

**FIGURE 10
WIRING DIAGRAM**



**FIGURE 10
PARTS LIST**

NO.	PART NO.	QTY.	DESCRIPTION
	JA-11776-4	1	WIRING- Harness (Incl. Ref. Nos. 1-13)
1		1	WIRE- Red, Solenoid to ammeter
2		1	Wire- Yellow, ammeter to key switch
3		1	Wire- Orange, key switch to Rectifier (Fused, 30 amp)
4		1	Wire- Violet, key switch to seat switch
5		1	WIRE- White, key switch to PTO switch
6		1	WIRE- Violet, seat switch to PTO Switch (Fused, 6 Amp)
7		1	WIRE- White, Solenoid to safety switch
8		1	WIRE- White, safety switch to PTO switch
9		1	WIRE- Green, PTO switch to PTO clutch

NO.	PART NO.	QTY.	DESCRIPTION
10		1	WIRE- Pink key switch to light Accessory (Pig Tail)
11		1	WIRE- Orange, key switch to lift Accessory (Pig Tail)
12		1	WIRE- Light Blue, PTO switch to coil
13		1	WIRE- Violet key switch to PTO Switch
14	JA-35842-4	1	CABLE- Red, battery to solenoid
15	JA-37552-2	1	CABLE- Black, battery to ground
16	JA-11220-6	1	CABLE- Black, solenoid to ground
17	JA-35886-4	1	CABLE- White, solenoid to starter
18	JA-35230-7	1	CABLE- Pink w/yellow tracer head light to switch to tail light
19	JA-35230-9	1	CABLE- Pink, switch to connector
**20	JA-47316-4	3	Sta-Strap cable tie
**21	JA-35230-2	2	RETAINER- Wire harness hold down
**22	JA-36249-6	1	CLIP- Wire harness

* 14 & 16 H.P. Only.

** Not shown, used to hold wires to tractor frame.

FIGURE 11
STEERING GEAR ASSEMBLY - PART NO. JA-12192-6

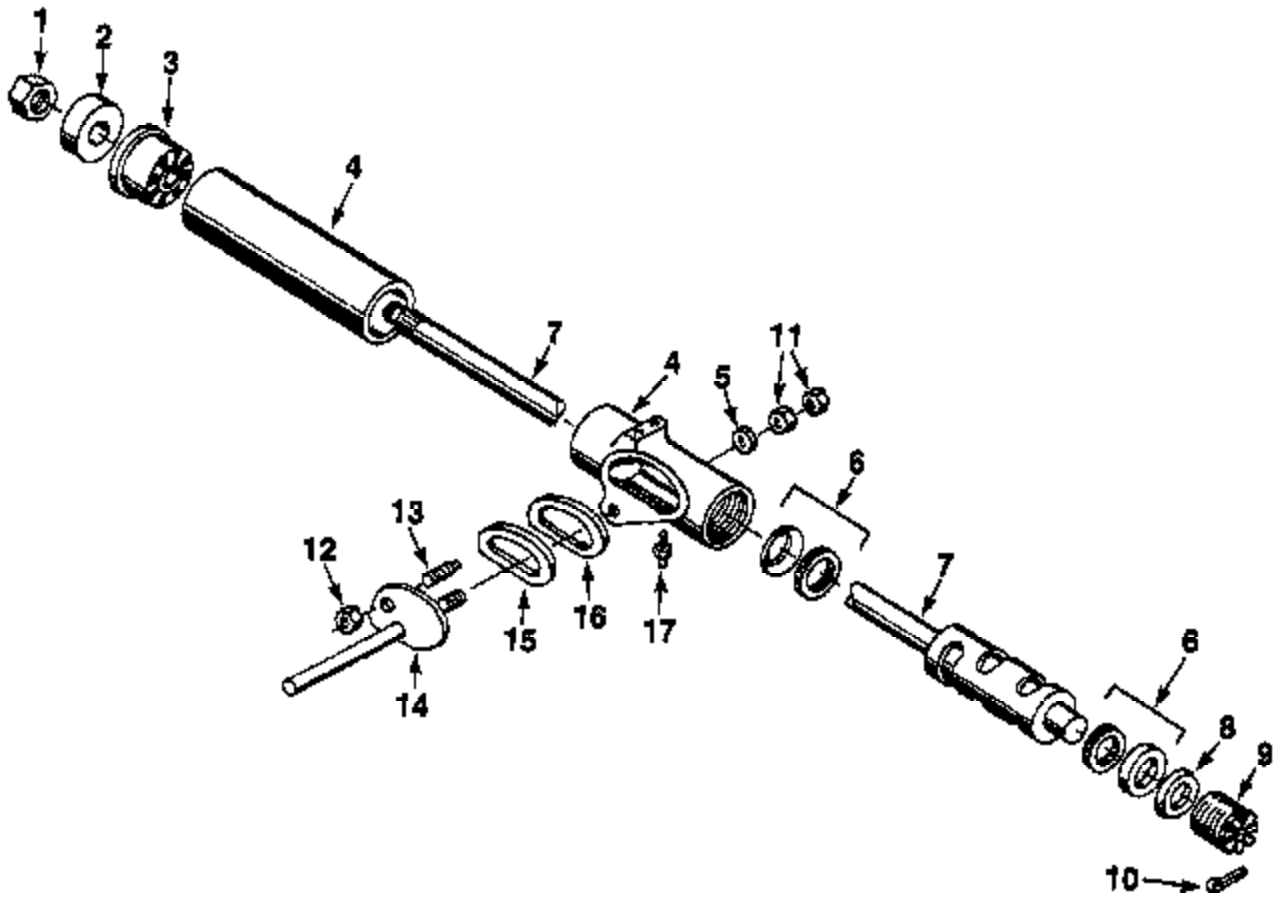


FIGURE 11
PARTS LIST

NO.	PART NO.	QTY.	DESCRIPTION
	JA-12192-6	1	STEERING GEAR ASSEMBLY (Incl. the Following)
1	JA-44382-8	1	NUT- 5/8-18 hex jam
2	JA-54606-3	1	COVER- Dual
3	JA-54606-4	1	BEARING- Steering Column
4	JA-50237-0	1	STEERING GEAR HOUSING ASSY.
5	JA-54906-0	1	WASHER- 17/16 x 1-1/8
6	JA-54606-6	1	BALL BEARING & CUP ASSY.
7	*N.S.S.	1	CAM & TUBE ASSEMBLY
8	JA-54606-7	1	WASHER- Belleville
9	JA-54606-8	1	PLUG- Steering Gear Adjustment
10	JA-46002-4	1	PIN- 1/8 x 1/2 Cotter
11	JA-44383-2	2	NUT- 3/4-18 hex jam
12	JA-44312-4	1	NUT- 9/16-18 hex
13	JA-50024-3	1	STUD- Lever
14	JA-51878-4	1	LEVER ASSEMBLY
15	JA-54903-3	1	RETAINER- Oil Seal
16	JA-54903-4	1	SEAL - OIL
17	JA-47121-2	1	FITTING- 1/8 x 45° grease

* Not serviced separately. For service use complete gear assembly,
 No. JA-12192-6

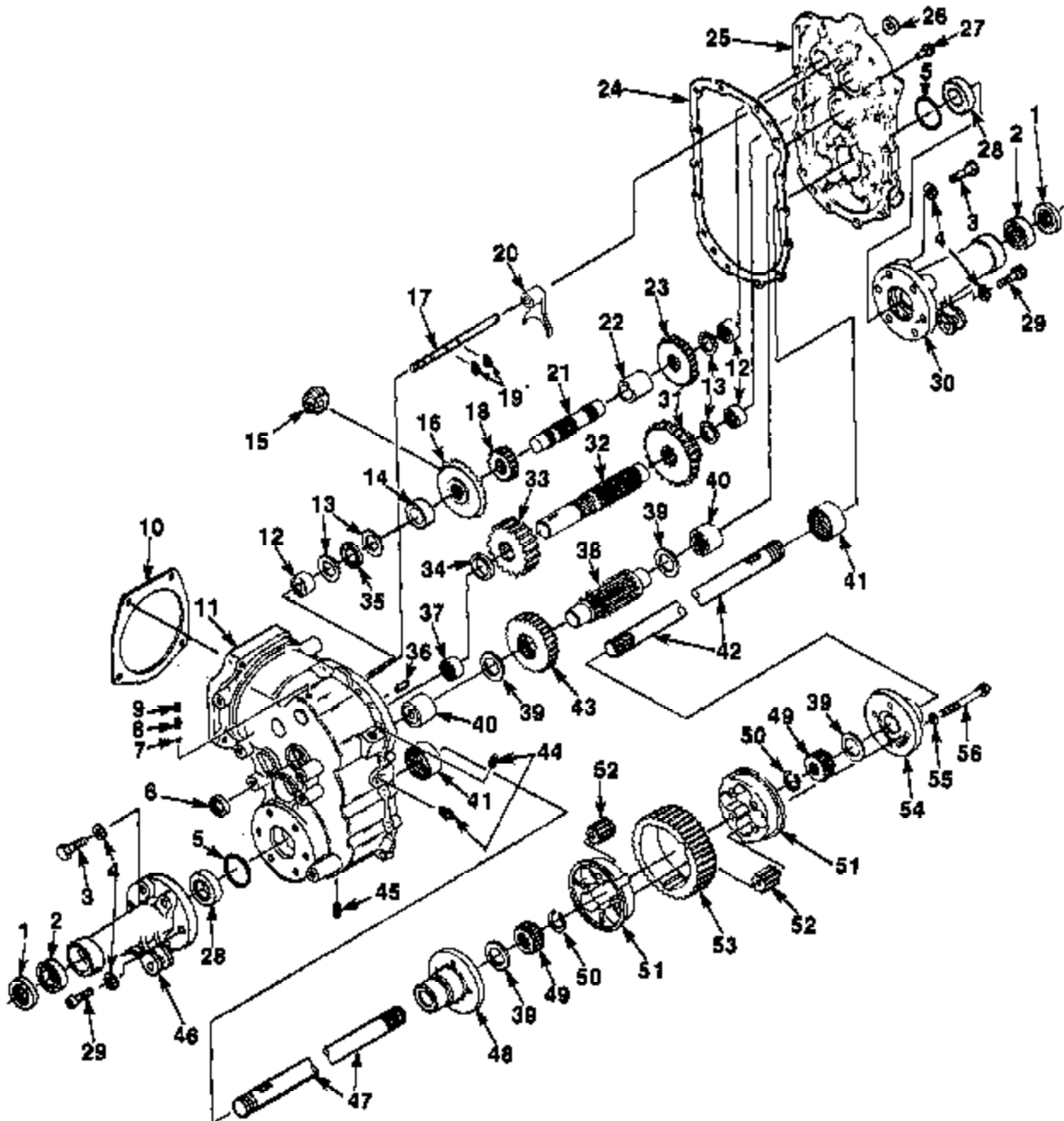
FIGURE 12
TRANSAXLE

FIGURE 12 PARTS LIST

NO.	PART NO.	DESCRIPTION	NO.	PART NO.	DESCRIPTION
1	788049	SEAL- Oil	28	780104	BEARING- Thrust
2	780103	BEARING- Ball	29	792088	SCREW- 1/2-13 x 1 1/2 allen hd cap
3	792085	SCREW- 1/2-13 x 1 1/2 hex hd	30	782039	HOUSING- Axle
4	792086	WASHER- Lock 1/2"	31	776100	GEAR- Cluster (23 & 27 tooth)
5	788048	SEAL- Square cut	32	776118	SHAFT- Brake
6	788008	SEAL- Oil	33	778102	GEAR- Spur (17 teeth)
7	792004	BALL- Steel	34	780005	SPACER
8	792003	SPRING	35	780012	BEARING- Thrust
9	792066	SCREW- 1/4-20 1/2 set	36	786026	PIN- Dowel
10	788050	GASKET	37	780097	BEARING- Needle
11	770060-A	CASE- Assembly, transaxle (incl #12, 37 40 & 41)	38	778120	PINION- Output
12	780100	BEARING- Needle	39	780101	WASHER- Thrust
13	780046	WASHER- Thrust	40	780099	BEARING- Thrust
14	786055	SPACER	41	780098	BEARING- Needle
15	778099-A	PINION- Bevel	42	774225	AXLE- Right hand
16	778087	GEAR- Bevel (30 teeth)	43	778103	GEAR- Output (33 teeth)
17	784196	ROD- Shift	44	792010	PLUG- Pipe
18	778088	GEAR- Spur (16 teeth)	45	792018	PLUG- Magnetic drain
19	792064	RING- Snap	46	782040	HOUSING- Axle
20	784195	FORK- Shift	47	774226	AXLE- Left hand
21	776118	SHAFT- Counter	48	774200	CARRIER- Differential
22	788056	SPACER	49	778065	GEAR- Ring
23	778098	GEAR- Spur (20 teeth)	50	792082	RING- Snap
24	788047	GASKET- Case & Cover	51	786054	COKE- Body
25	772065	COVER- Assembly transaxle (incl 12 40 & 41)	52	778086	GEAR- Pinion
26	788034	SEAL- Oil	53	778084	GEAR- Ring
27	792087	SCREW- 5/16-18 x 1 thrd forming hex hd	54	774199	CARRIER- Differential
			55	792011	WASHER- Lock
			56	792063	SCREW- 3/8-16 x 3 5/16 hex hd

ORDER REPLACEMENT PARTS FROM:

TECUMSEH PRODUCTS COMPANY

Lauson - Power Products Parts Depot Division
Grafton, Wisconsin

FIGURE 13
HYDROSTATIC TRANSMISSION - PART NO. JA-11642-6

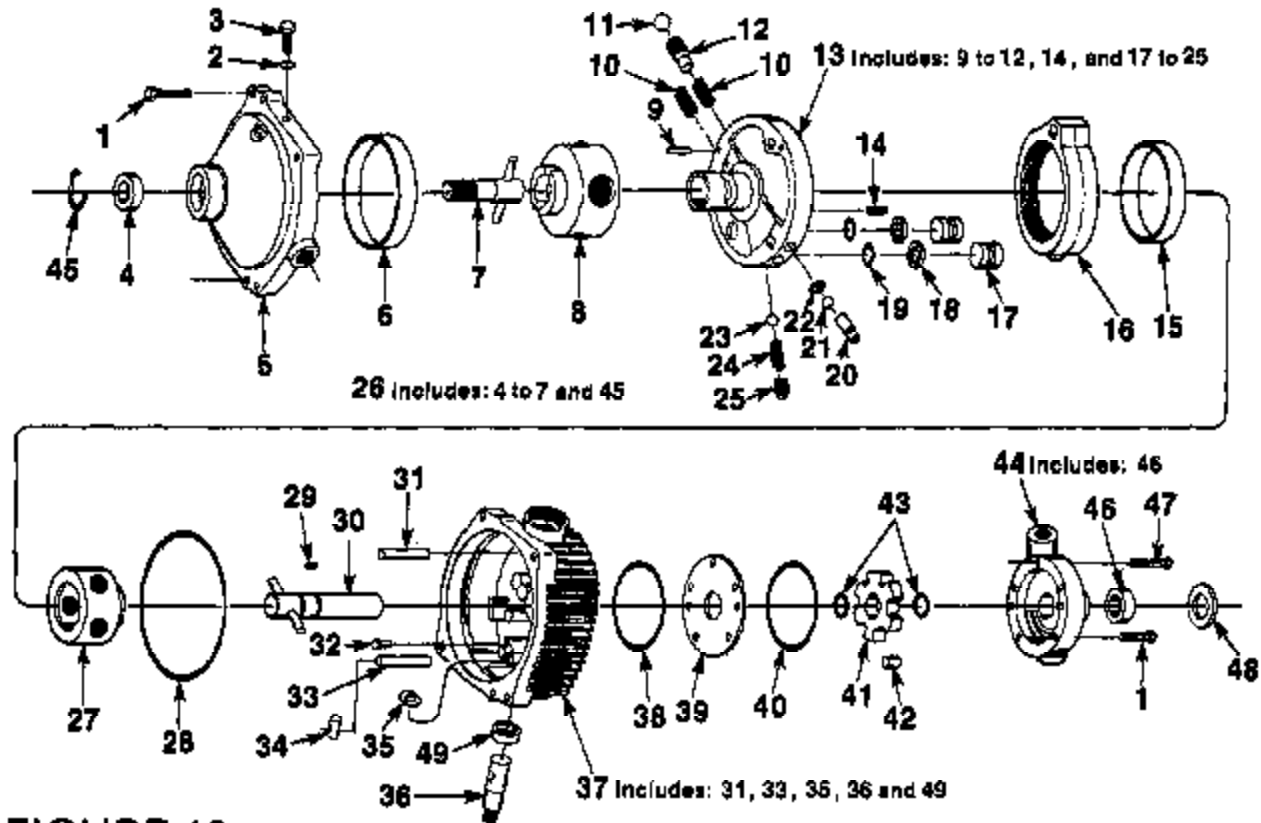


FIGURE 13
PARTS LIST

NO.	PART NO.	QTY.	DESCRIPTION
1	JA-59025-7	4	SCREW- 5/16 x 1 1/4 hex hd.
2	JA-59973-4	1	O-RING- Tube fitting
3	JA-50257-2	1	O-RING PLUG ASSEMBLY (Incl. ref. #2)
4	JA-57002-0	1	BEARING- Ball (output shaft)
5	JA-57002-9	1	BODY- Motor
6	JA-54935-8	1	RACE- Inner
7	JA-50246-0	1	SHAFT- Subassembly output
8	JA-50244-4	1	ROTOR- Ball subassembly motor
9	JA-54838-3	1	DOWEL- Acceleration valve plug
10	JA-54896-5	2	SPRING- Acceleration valve
11	JA-54896-7	2	BALL- 5/8 Dia acceleration plug
12	JA-57002-8	2	VALVE- Acceleration
13	JA-51898-3	1	PINTLE- Subassembly (Incl. 8, 14, 17 & 18)
14	JA-54937-3	1	PIN- Coil
15	JA-54937-5	1	PUMP RACE
16	JA-51898-2	1	RING- Cam (Ref. #15)
17	JA-54935-7	2	PISTON- Pintle
18	JA-54935-8	2	RING- Backup piston
19	JA-54936-9	2	RING- O-RING piston
20	JA-54936-3	2	BODY- Directional valve
21	JA-54937-1	2	BALL- 5/16 dia directional valve
22	JA-54897-2	1	RETAINER
23	JA-54937-0	1	BALL- 7/16 dia, charge pressure relief
24	JA-54936-9	1	SPRING- Charge pressure relief valve
25	JA-54936-8	1	PLUG- Charge pressure relief valve
26	JA-51876-7	1	BODY- Subassembly, transmission motor (Incl. ref. #4, 5, 6, 7 & 45)

NO.	PART NO.	QTY.	DESCRIPTION
27	JA-50245-9	1	ROTOR- Ball subassembly
28	JA-54937-8	1	SEAL- Ring square cut
29	JA-54644-4	1	P/N- Drive charge pump
30	JA-50109-5	1	SHAFT SUBASSEMBLY- (input)
31	JA-57002-5	1	PIN- Dowel pivot
32	JA-54937-9	2	CAP
33		1	PIN- Dowel 7/16 x 2
34	JA-54937-7	1	RING- Insert clamp (steel)
35		1	WASHER- Control shaft
36	JA-51898-4	1	CONTROL SHAFT & PIN ASSEMBLY (Incl. 33, 35 & 49)
37	JA-51898-1	1	COVER- Subassembly (Incl. Ref. #31, 33, 35, 36 & 49)
38	JA-54935-4	1	SEAL- Square cut
39	JA-57002-4	1	PLATE- Charge pump
40	JA-54938-0	1	SEAL- Square cut
41	JA-54850-9	1	CARRIER- Charge pump
42	JA-54643-9	6	ROLL- Charge pump
43	JA-54643-7	2	RING- Snap input shaft
44	JA-50109-8	1	BODY SUBASSEMBLY- Charge pump (Incl. Ref. 48)
45	JA-54644-5	1	RING- Snap output shaft
46	JA-54641-5	1	SEAL- Oil input shaft
47	JA-59026-6	1	SCREW- 5/16-18 x 1 3/4 hex hd.
48	JA-54641-6	1	SHIELD- Grass
49	JA-54641-5	1	SEAL- Oil control shaft

* These parts included in Charge Pump Kit No. JA-80286-4.

ADDRESS

HOMELITE DIVISION OF TEXTRON INC.

P.O. Box 7047
14401 Carowinds Boulevard
Charlotte, N.C. 28217

Overseas Offices

Homelite Division of Textron
Korenaarstraat 1
2153 BM Nieuw Vennep
The Netherlands

Homelite Division of Textron
Pacific Limited
P.O. Box 209
Blackburn, 3130
Victoria, Australia

HOMELITE **TEXTRON**

Homelite Division of Textron Inc