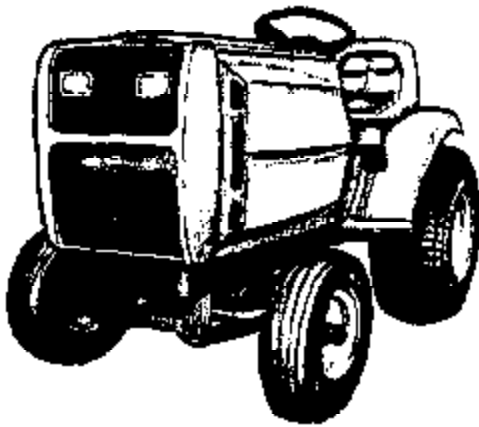


PARTS LIST

GEAR TRACTORS 1000 AND 1200



MODELS: GT10G
UT-34000
GT12G
UT-34001

**HOMELITE®
JACOBSEN**

⚠ WARNING

IF INCORRECTLY USED THIS MACHINE CAN CAUSE SEVERE INJURY. THOSE WHO USE AND MAINTAIN THE MACHINE SHOULD BE TRAINED IN ITS PROPER USE, WARNED OF ITS DANGERS, AND SHOULD READ THE ENTIRE MANUAL BEFORE ATTEMPTING TO SET UP, OPERATE, ADJUST OR SERVICE THE MACHINE.

FIGURE 1
FRAME, TRANSAXLE & REAR ASSEMBLY

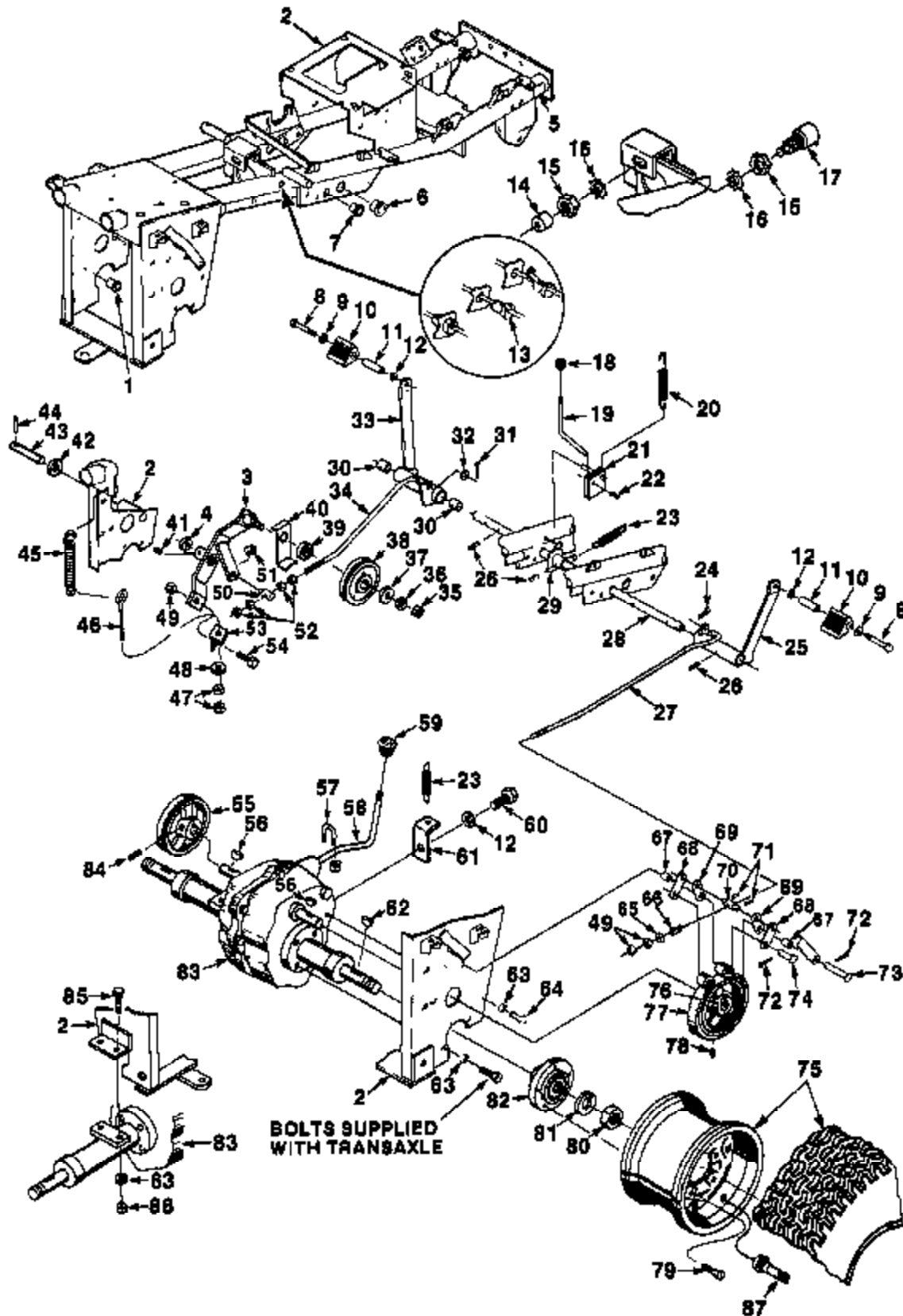
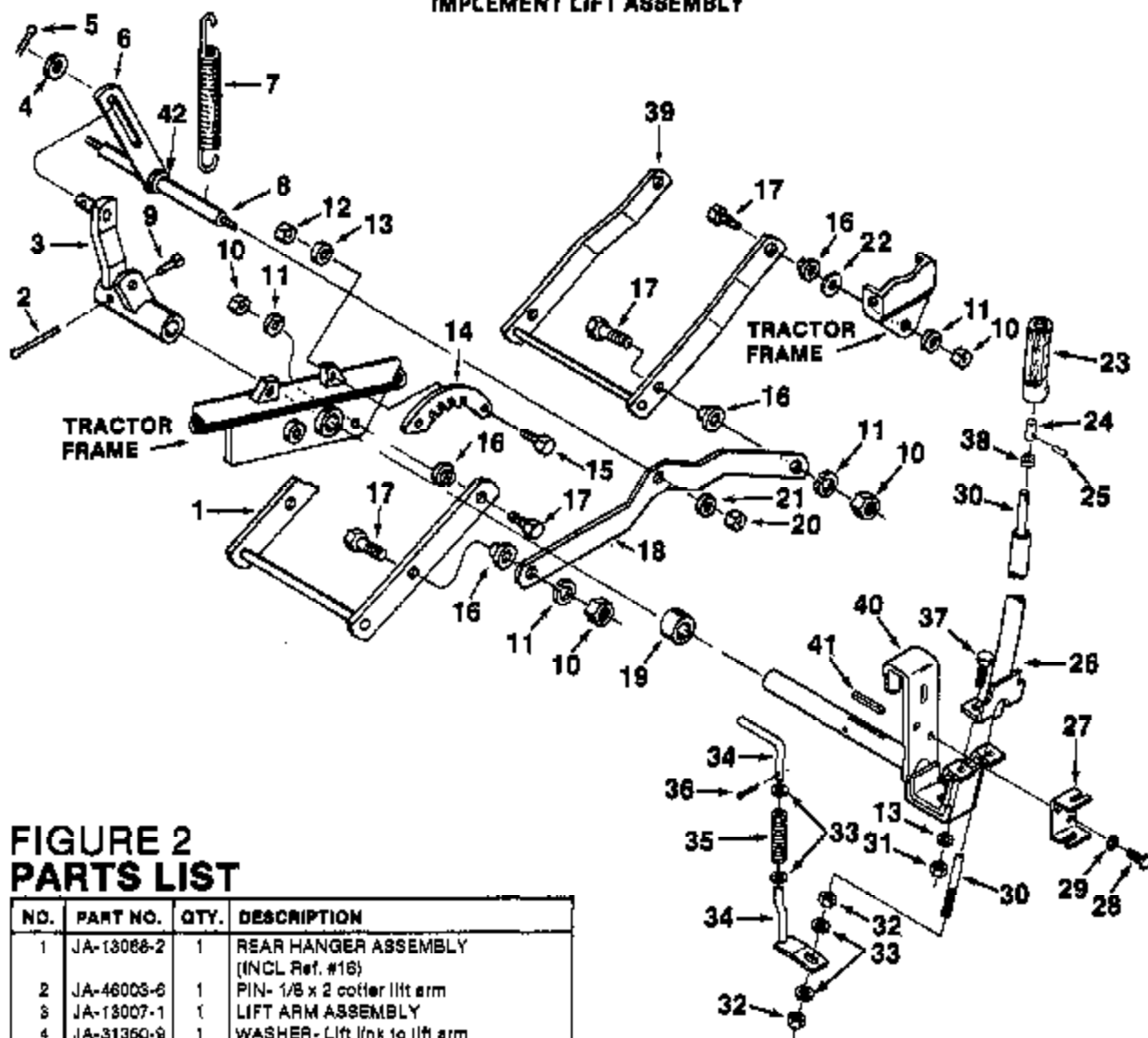


FIGURE 1 PARTS LIST

NO.	PART NO.	QTY.	DESCRIPTION	NO.	PART NO.	QTY.	DESCRIPTION
1	JA-31144-1	2	BUSHING	45	JA-35194-0	1	SPRING- Clutch idler
2	JA-11644-1	1	FRAME- Assembly	46	JA-38183-8	1	BOLT- Eye
3	JA-12867-3	1	ARM- Idler	47	JA-44310-2	2	NUT- 1/4-20
4	JA-31382-0	1	WASHER- Idler arm adjusting	48	JA-45302-8	1	WASHER- 1/4 SAE
5	JA-33861-4	2	DECAL- Warning (heat)	49	JA-44471-8	3	NUT- 5/16-18 hex c/lock
6	JA-36150-8	2	BUSHING- Lift shaft pivot	50	JA-36194-1	1	TRUNNION- Clutch idler rod
7	JA-34613-3	2	BUSHING- Brake shaft pivot	51	JA-34185-5	1	SPRING ROD- Trunnion mounting
8	JA-40036-8	2	SCREW- 7/16-20 x 3 hex hd.	52	JA-44310-6	4	NUT- 5/16-18 hex
9	JA-45301-3	2	WASHER- 7/16 flat	53	JA-35234-9	1	BRACKET- Idler mounting spring
10	JA-34502-0	2	PAD- Pedal	54	JA-40015-4	1	BOLT- 5/16-18 x 3/4 hex hd.
11	JA-36251-4	2	SPACER- Pedal	55	JA-21806-8	1	PULLEY- Transaxle (mput
12	JA-44814-8	2	WASHER- Lock 7/16 hvy	56	JA-48301-7	2	KEY- Woodruff
13	JA-36249-7	1	BUSHING- Strain relief	57	JA-35908-4	1	CLAMP- Shift lever
14	JA-34378-6	1	BOOT- Safety switch	58	JA-33058-8	1	LEVER- Shift
15	JA-34378-4	2	NUT- Switch mounting	59	JA-34258-2	1	KNOB- Gear shift
16	JA-44702-2	2	WASHER- Lock 5/8 ext tooth	60	JA-40025-8	1	BOLT- 3/8-16 x 5/8
17	JA-12633-8	1	SWITCH- Start safety	61	JA-36896-6	1	PLATE- Gearshift lever spring mtg.
18	JA-31520-9	1	KNOB- Parking brake	62	JA-48303-8	2	KEY- Woodruff
19	JA-35904-5	1	ROD- Brake lock activator	63	JA-44814-2	5	WASHER- Lock 3/8 hvy.
20	JA-35916-8	1	SPRING- Brake lock release	64	JA-40025-8	1	SCREW- 3/8-16 x 3/4 hex hd.
21	JA-18209-6	1	BRAKE LOCK ASSEMBLY	65	JA-45300-8	1	WASHER- 5/16 plain
22	JA-48135-7	1	PIN- 1/8 x 6/8 roll	66	JA-35195-6	1	SPRING- Brake actuator rod
23	JA-34327-2	2	SPRING- Brake pedal return	67	JA-32578-6	2	SPACER
24	JA-46030-8	1	PIN- Hair	68	JA-36939-2	2	LINK- Brake (long)
25	JA-18063-1	1	LEVER ASSEMBLY- Brake	69	JA-36939-3	2	LINK- Brake (short)
26	JA-48139-7	3	PIN- 1/4 x 1 1/4 roll	70	JA-35939-6	1	PIN- Connecting
27	JA-33671-0	1	ROD- Brake actuator	71	JA-48137-1	2	PIN- Roll 5/32 x 3/4
28	JA-33866-1	1	SHAFT- Clutch brake pivot	72	JA-48002-8	2	PIN- 1/8 x 1 cotter
29	JA-18186-3	1	BRAKE LOCK BECTOR ASSEMBLY	73	JA-48149-9	1	PIN- Clevis 1/2 x 3
30	JA-30488-4	2	CLUTCH LEVER BUSHING ASSEMBLY	74	JA-48148-0	1	PIN- Clevis 1/2 x 1 3/4
31	JA-46002-8	1	PIN- Cotter 1/8 x 1	75	JA-18188-3	2	WHEEL & TIRE ASSEMBLY (10 H.P. & 12 H.P.)
32	JA-45200-8	1	WASHER- 5/16 flat		JA-18179-7	2	WHEEL & TIRE ASSEMBLY (10 H.P.)
33	JA-15082-8	1	CLUTCH LEVER & BUSHING ASSEMBLY	76	JA-21806-9	1	DRUM- Brake
34	JA-33655-8	1	ROD- Clutch Actuator	77	JA-12076-3	1	BAND & BRAKE LINING ASSEMBLY
36	JA-44311-8	1	NUT- 1/2-13 hex	78	JA-41561-9	2	SCREW- 5/16-18 x 3/8 sqc hd. set
36	JA-44815-4	1	WASHER- Lock 1/2 hvy.	79	JA-31520-8	10	BOLT- Rear wheel mounting
37	JA-31274-6	1	WASHER	80	JA-44364-0	2	NUT- 1-12 hex jam
38	JA-15479-8	1	PULLEY- Idler	81	JA-44818-4	2	WASHER- Lock 1" hvy.
38	JA-35181-8	1	SPACER- Idler shaft	82	JA-21806-7	2	HUB- Rear wheel
40	JA-35209-6	1	GUIDE- Belt (drive)	*83	JA-11628-2	1	TRANSAXLE ASSEMBLY
41	JA-41200-5	1	SCREW- 1/4-20 x 1/2 sq. hd. set	84	JA-41201-4	1	SCREW- 5/16-18 x 1 1/2 sq. hd set
42	JA-34311-8	1	WASHER- Clutch shaft retainer	85	JA-40028-8	2	SCREW- 3/8-16 x 1 1/2 hex hd.
43	JA-35184-2	1	SHAFT- Idler arm pivot	86	JA-44311-0	2	NUT- 3/8-16 hex
44	JA-46136-3	1	PIN- 3/16 x 1 roll	87	JA-34167-8	1	VALVE- Stem

* See figure 1D for parts.

**FIGURE 2
IMPLEMENT LIFT ASSEMBLY**



**FIGURE 2
PARTS LIST**

NO.	PART NO.	QTY.	DESCRIPTION
1	JA-13088-2	1	REAR HANGER ASSEMBLY (INCL Ref. #16)
2	JA-46003-6	1	PIN- 1/8 x 2 cotter lift arm
3	JA-13007-1	1	LIFT ARM ASSEMBLY
4	JA-31360-9	1	WASHER- Lift link to lift arm
5	JA-46002-6	1	PIN- 1/8 x 1 cotter
6	JA-16886-0	1	LIFT LINK ASSEMBLY
7	JA-36236-0	1	SPRING
8	JA-36922-4	1	CROSS BAR- Connecting link
9	JA-41201-4	1	SCREW- 5/16-18 x 1/2 sq hd. set
10	JA-44476-2	8	NUT- 3/8-16 hex c/lock linkage mtg.
11	JA-46301-1	8	WASHER- 3/8 SAE linkage mtg.
12	JA-44370-8	2	NUT- 5/16-18 hex
13	JA-44813-6	4	WASHER- Lock 5/16 hvy. lift (Quadrant to frame mounting)
14	JA-36922-4	1	QUADRANT- Lift
15	JA-40018-8	2	SCREW- 5/16-18 x 1 hex hd. oap (lift quadrant to frame mtg.)
16	JA-35158-7	8	BUSHING- Front hanger pivot
17	JA-35158-5	8	BOLT- Linkage mounting
18	JA-33883-8	2	CONNECTING- Lift link
19	JA-35174-9	1	ARM- Spacer lift
20	JA-44476-8	2	NUT- 1/2-13 hex c/lock cross bar mtg.
21	JA-45301-7	2	WASHER- 1/2 SAE
22	JA-45200-8	2	WASHER- Flat 9/16
23	JA-34183-3	1	GRIP- Lift handle
24	JA-31594-9	1	PLUNGER- Lift lever

NO.	PART NO.	QTY.	DESCRIPTION
25	JA-46135-5	1	PIN- 1/8 x 1/2 roll
26	JA-12197-7	1	HANDLE- Lift weldment
27	JA-35842-7	1	GUIDE
28	JA-40010-4	2	SCREW- 1/4-20 x 1/2 hex hd.
29	JA-44813-0	2	WASHER- Lock 1/4 hvy.
30	JA-39012-3	1	ROD- Lift lever
31	JA-44380-6	2	NUT- 5/16-18 hex
32	JA-44577-7	2	NUT- 5/16-18 hex c/lock
33	JA-45300-9	4	WASHER- 5/16 flat
34	JA-13074-2	1	LATCH PIN ASSEMBLY
35	JA-37568-0	1	SPRING- Latch pin
36	JA-46001-2	1	PIN- 3/32 x 5/8 cotter
37	JA-40019-0	2	BOLT- 5/16-18 x 1 1/4 hex hd.
38	JA-31089-0	1	COLLAR- Lift lever plunger
39	JA-13068-3	1	FRONT HANGER ASSEMBLY (Includes Item #16)
40	JA-12197-6	1	LIFT LEVER & PIVOT SHAFT ASSEMBLY
41	JA-31043-7	1	KEY- Lift arm assembly to shaft mtg.
42	JA-34548-8	1	BUSHING

FIGURE 3
STEERING ASSEMBLY

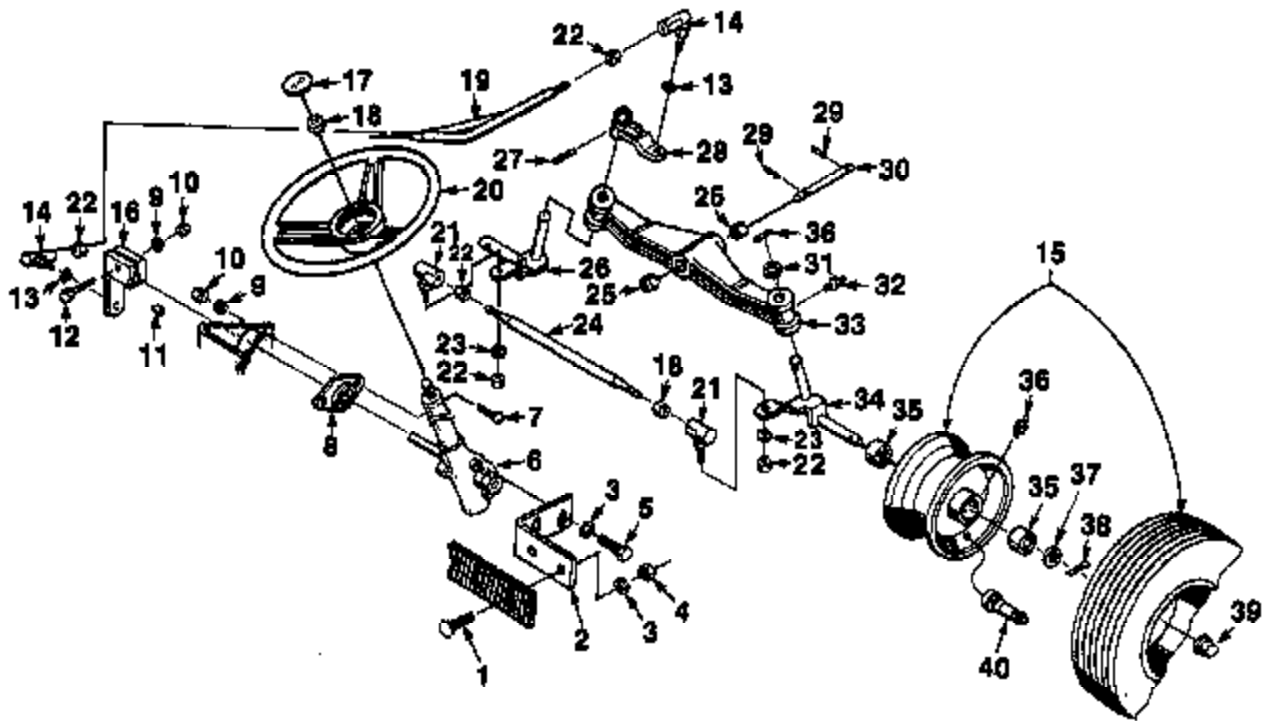


FIGURE 3
PARTS LIST

NO.	PART NO.	QTY.	DESCRIPTION	NO.	PART NO.	QTY.	DESCRIPTION
1	JA-44167-8	2	BOLT- 3/8-18 x 1 1/4 carr	21	JA-15481-5	2	BALL JOINT ASSEMBLY
2	JA-33673-8	1	BRACKET- Steering gear	22	JA-44382-0	6	NUT- 1/2-20 hex jam
3	JA-44614-2	2	WASHER- Lock 3/8 hvy	23	JA-44616-4	2	WASHER- Lock 1/2 hvy
4	JA-44311-0	2	NUT- 3/8-18 hex	24	JA-35154-7	1	ROD- Tie
5	JA-40026-4	2	SCREW- 3/8-18 x 1 1/4 hex hd.	25	JA-36179-8	2	BUSHING
18	JA-12192-6	1	STEERING GEAR ASSEMBLY	26	JA-12192-7	1	SPINDLE ASSEMBLY (L.H.)
7	JA-44160-2	2	BOLT- 5/16-18 x 3/4 carr.	27	JA-46140-4	1	PIN- 5/16 x 1 1/2 roll
8	JA-35334-9	1	BEARING	28	JA-16180-0	1	STEERING ARM ASSEMBLY
9	JA-44613-6	3	WASHER- Lock 5/16 hvy.	29	JA-46136-3	2	PIN- Roll 3/16 x 1
10	JA-44310-8	3	NUT- 5/16-18 hex	30	JA-33853-0	1	PIN- Front axle mtg.
11	JA-46301-7	1	KEY- Woodruff	31	JA-32499-6	1	WASHER- Spindle retainer R.H.
12	JA-40019-6	1	BOLT- 5/16-18 x 2	32	JA-47121-9	2	FITTING- Grease
13	JA-44722-0	2	WASHER- Lock 1/2 int. tooth	33	JA-10180-1	1	FRONT AXLE ASSEMBLY (Incl. Ref. #25 & 32)
14	JA-16163-5	2	BALL JOINT ASSEMBLY	34	JA-99007-2	1	SPINDLE ASSEMBLY (R.H.)
**15	JA-12182-6	2	WHEEL & TIRE ASSEMBLY	35	JA-32810-6	4	BEARING- Front wheel
16	JA-14197-3	1	STEERING ARM ASSEMBLY	36	JA-47121-4	2	GREASE FITTING- Front wheel
17	JA-98036-5	1	CAP- Steering wheel	37	JA-30245-8	2	WASHER- Front wheel mounting
18	JA-44382-0	1	NUT- 5/8-18 hex jam	38	JA-46004-0	2	PIN- 5/32 x 1 1/4 cotter
19	JA-13077-2	1	DRAG LINK ASSEMBLY	39	JA-36842-3	2	CAP- Front wheel hub
20	JA-32886-2	1	WHEEL- Steering	40	JA-34167-9	1	VALVE STEM

*See Figure 6 for parts breakdown of steering gear.

**Not serviced.

FIGURE 4
POWER TAKE-OFF ASSEMBLY

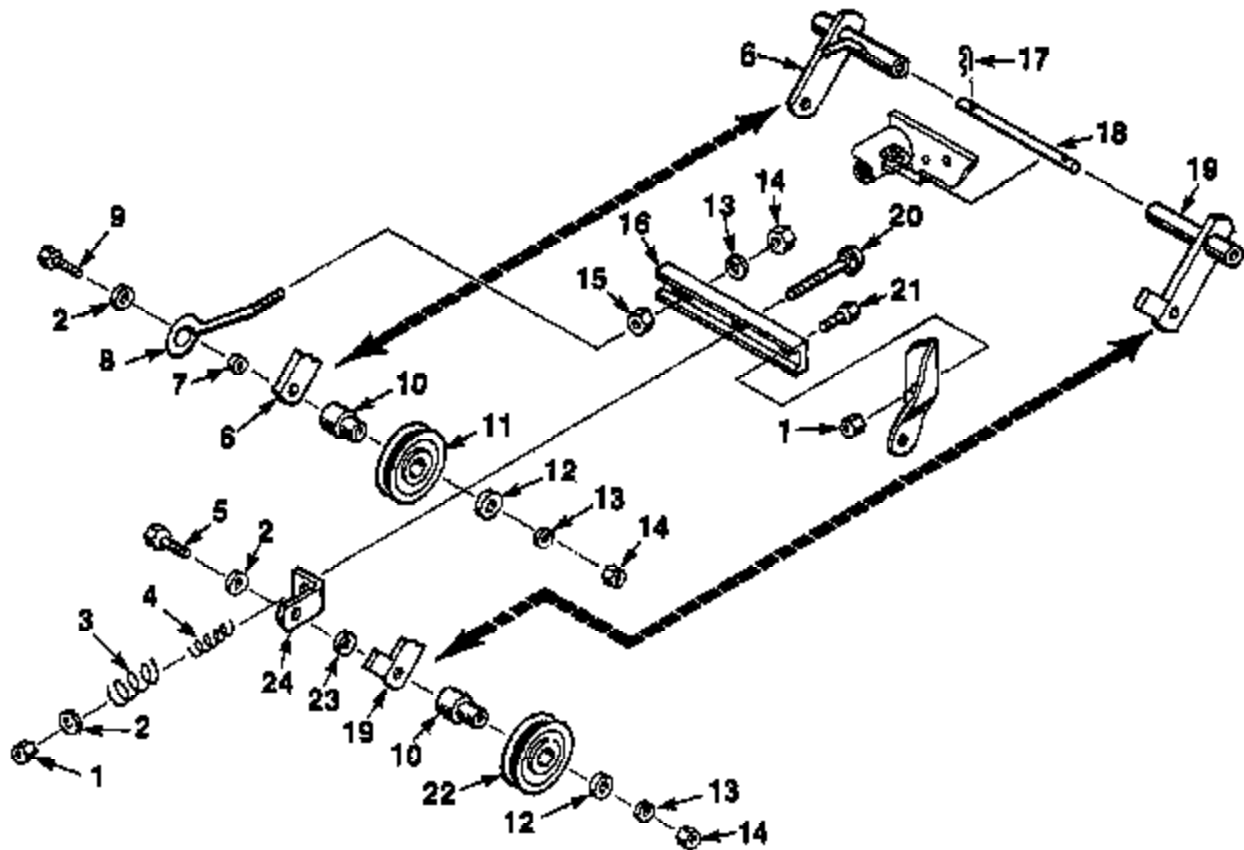


FIGURE 4
PARTS LIST

NO.	PART NO.	QTY.	DESCRIPTION
1	JA-44481-0	1	NUT- 3/8-16 hex flex lock
2	JA-31071-1	8	WASHER
3	JA-36374-7	1	SPRING- Compression idler (outside)
4	JA-35374-8	1	SPRING- Compression idler (inside)
5	JA-40027-2	1	SCREW- 3/8-16 x 2 1/4 hex hd
6	JA-13022-4	1	FIXED IDLER ASSEMBLY
7	JA-35761-4	1	SPACER
8	JA-35405-7	1	ROD- Fixed idler retaining
9	JA-40027-4	1	SCREW- 3/8-16 x 2 1/2 hex hd.
10	JA-34495-2	2	IDLER- Stand off
11	JA-32081-4	1	PULLEY- Idler
12	JA-46801-1	2	WASHER
13	JA-44814-2	3	WASHER- Lock 3/8 hvy.
14	JA-44311-0	3	NUT- 3/8-16 hex
15	JA-44361-0	1	NUT- 3/8-16 hex jam
16	JA-33641-8	1	BRACKET- Idler spring & adj. screw
17	JA-46031-8	2	PIN- Hair
18	JA-35208-7	1	ROD- Idler pivot
19	JA-13064-0	1	IDLER ARM & SPRING TENSION ASSEMBLY
20	JA-44168-0	1	BOLT- 3/8-16 x 5 1/2 corr.
21	JA-40026-2	2	SCREW- 3/8-16 x 1 hex hd.
22	JA-33081-5	1	PULLEY- Idler
23	JA-35258-4	1	SPACER
24	JA-50087-1	1	BRACKET- Idler spring retaining

FIGURE 5
STEERING GEAR ASSEMBLY

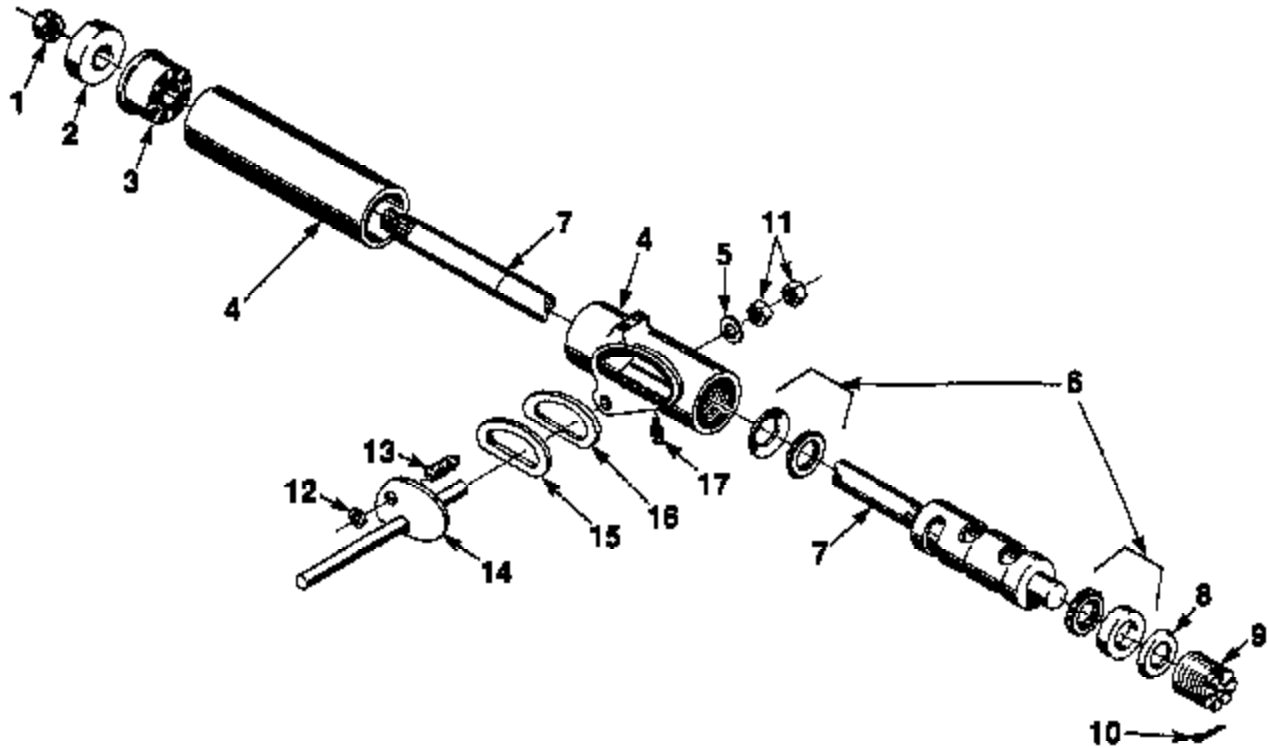


FIGURE 5
PARTS LIST

NO.	PART NO.	QTY.	DESCRIPTION
	JA-12182-6	1	STEERING GEAR ASSEMBLY (Incl. #1-17)
1	JA-44382-8	1	NUT- 5/8-18 hex jam
2	JA-54808-3	1	COVER- Dust
3	JA-54606-4	1	BEARING- Steering column
4	JA-50287-0	1	STEERING GEAR HOUSING ASSEMBLY
6	JA-54908-0	1	WASHER
6	JA-54608-6	1	BALL BEARING AND CUP ASSEMBLY
7	*N.S.B.	1	CAM & TUBE ASSEMBLY
8	JA-54608-7	1	WASHER- Belleville
9	JA-54806-8	1	PLUG- Steering gear adjustment
10	JA-46002-4	1	PIN- 1/8 x 1/2 cotter
11	JA-44383-2	2	NUT- 9/4-16 hex jam
12	JA-44312-4	1	NUT- 9/16-16 hex
13	JA-58024-3	1	STUD- Lever
14	JA-51676-4	1	LEVER ASSEMBLY
16	JA-54908-9	1	RETAINER- Oil seal
16	JA-54903-4	2	SEAL- Oil
17	JA-47121-2	1	FITTING- 1/8 PTF x 45° grease

*N.S.B. Not serviced separately. For service use complete gear assembly No. JA-12182-6.

FIGURE 6
ENGINE, DRIVE SHAFT & FRONT POWER TAKE-OFF ASSEMBLY

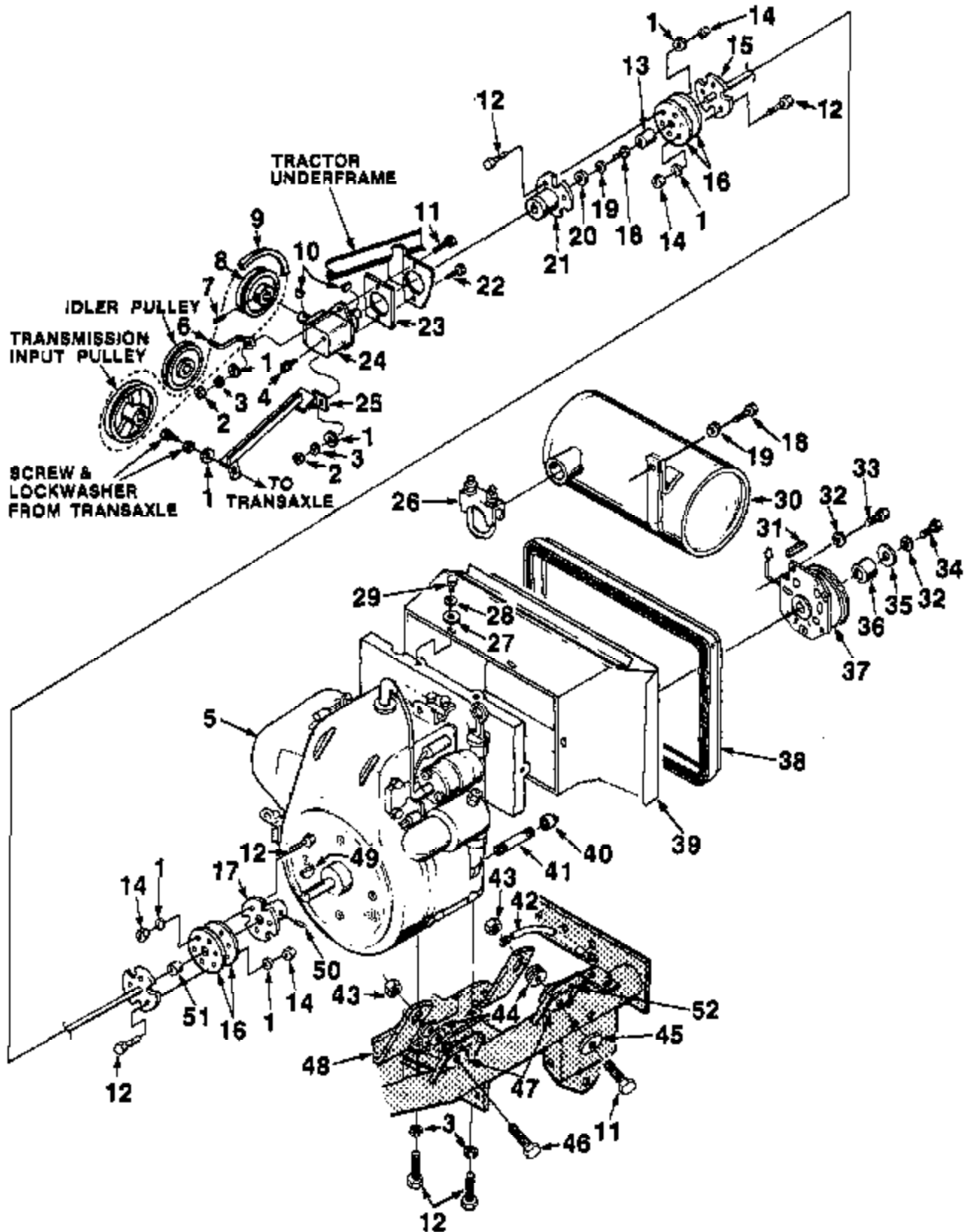


FIGURE 6 PARTS LIST

NO.	PART NO.	QTY.	DESCRIPTION
1	JA-45301-1	15	WASHER- 3/8 SAE
2	JA-44311-0	2	NUT- 3/8-16 hex
3	JA-44614-2	6	WASHER- Lock 3/8 hvy
4	JA-47123-3	1	FITTING- Grease
5	JA-89030-6	1	ENGINE- Kohler K-241 AQS HP (Spec # 48740-D) (10 H.P.)
	JA-89030-7	1	ENGINE- Kohler K-801 AQS HP (Spec # 47806-D) (12 H.P.)
	JA-89030-5	1	ENGINE- Kohler K-841 (16 H.P.)
6	JA-86214-1	1	GUIDE- Belt upper
7	JA-41201-4	1	SCREW- 5/16-18 x 1/2 sq hd cup pt. set
8	JA-33051-9	1	PULLEY- Right angle drive
9	JA-33055-9	1	BELT- Drive
10	JA-46301-7	2	KEY- Woodruff 3/16 x 3/4 #9
11	JA-40027-0	2	SCREW- 3/8-16 x 2 hex cap
12	JA-40026-2	18	SCREW- 3/8-16 x 1 hex cap
13	JA-31357-7	1	BEARING
14	JA-44476-2	12	NUT- 3/8-16 hex C/lock
15	JA-12878-7	1	COUPLING & SHAFT ASSEMBLY
16	JA-35075-6	4	DISC- Coupling
17	JA-12984-4	1	FRONT COUPLING ASSEMBLY
18	JA-40018-8	2	SCREW- 5/16-18 x 7/8 hex hd.
19	JA-44613-8	2	WASHER- Lock 5/16 hvy.
20	JA-35234-4	1	WASHER
21	JA-15610-8	1	REAR COUPLER ASSEMBLY
22	JA-40025-8	2	SCREW- 3/8-16 x 1 3/4 hex hd. (cap gear box mounting)
23	JA-35181-9	1	PAD- Insulator
24	JA-12042-2	1	ANGLE- Drive gear box (R.H.)
25	JA-12880-6	1	RETAINER- Belt
26	JA-34886-6	1	CLAMP- Muffler mounting
27	JA-45200-4	8	WASHER- Flat 1/4
28	JA-44613-0	8	WASHER- Lock 1/4 hvy
29	JA-40010-8	6	SCREW- 1/4-20 x 5/8
30	JA-35883-0	1	MUFFLER ASSEMBLY
31	JA-35184-9	1	KEY- Electric clutch mounting
32	JA-44614-8	15	WASHER- Lock 7/16 hvy.
33	JA-40033-0	4	SCREW- 7/16-14 x 3/4 hex hd.
34	JA-40037-2	1	SCREW- 7/16-20 1 1/4 hex hd.
35	JA-34584-8	1	WASHER- Clutch retainer
36	JA-35183-5	1	SPACER- Electric clutch mounting
37	JA-99037-8	1	CLUTCH/BRAKE- Electric P.T.O.
38	JA-36895-8	1	SEAL- Engine duct
39	JA-12197-0	1	DUCT & SEAL ASSEMBLY (Incl. Ref. #38)
40	JA-47244-7	1	CAP- 1/4 NPT pipe
41	JA-47177-2	1	NIPPLE- 1/4 NPT 3" leg
42	JA-99229-0	1	CABLE- Ground (Engine to Frame)
43	JA-44481-0	4	NUT- 3/8-16 hex
44	JA-45200-8	A/R	WASHER- Flat 3/8
45	JA-35805-6	4	WASHER- Mtg. bracket to isolator
46	JA-40026-8	3	SCREW- 3/8-16 x 1 3/4 hex hd.
47	JA-35836-4	4	ISOLATOR- Engine
48	JA-39509-2	2	BRACKET- Engine mtg.
49	JA-46302-5	1	KEY- Woodruff 3/16 x 1 front coupling mounting
50	JA-41203-3	1	SCREW- 3/8-16 x 1/2 sq. hd. cup pt. set
51	JA-35183-4	1	BUSHING
52	JA-48350-7	16	Rivet

* See figure 11 for service parts breakdown.

FIGURE 7
REAR FENDER, BODY & SEAT ASSEMBLY

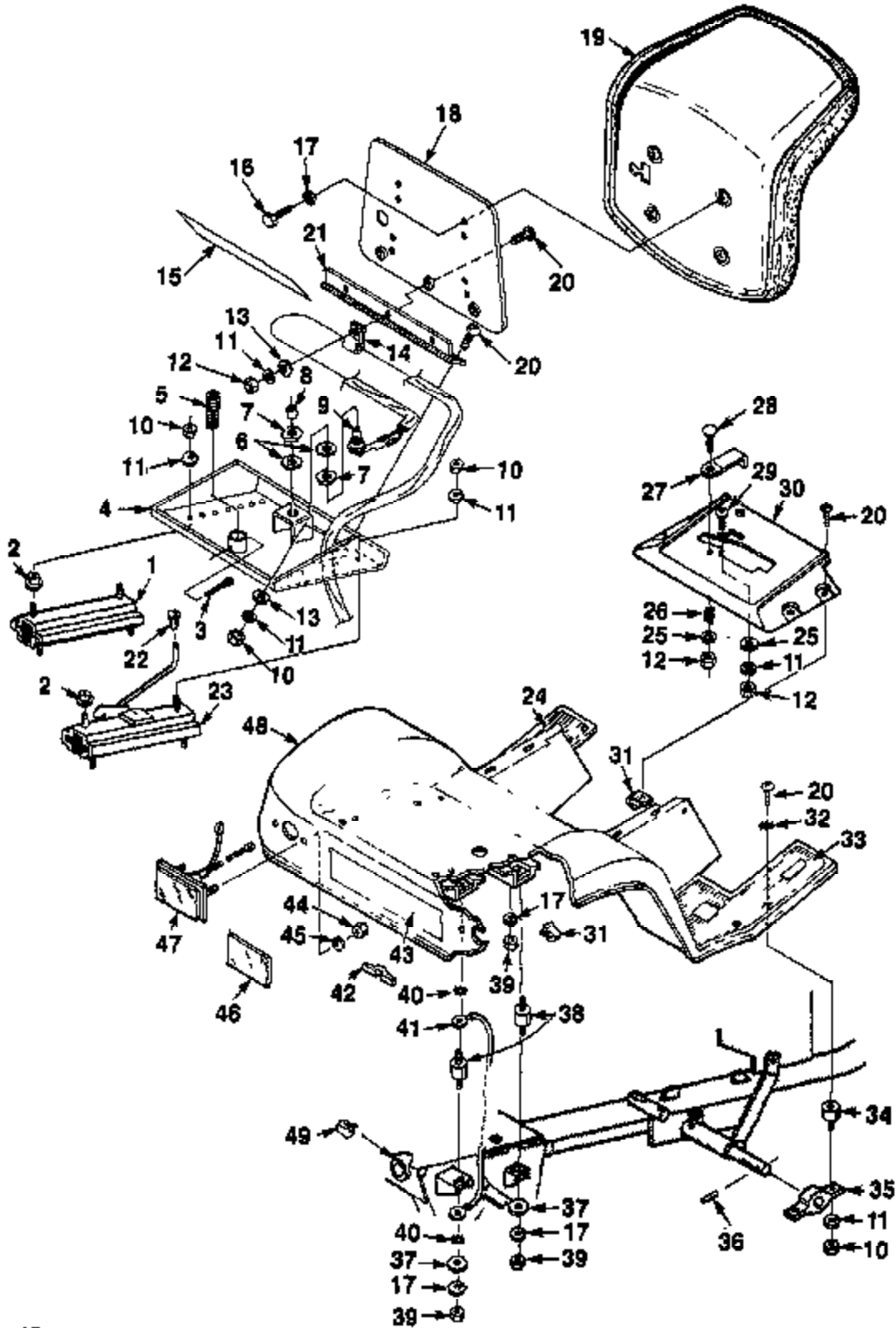


FIGURE 7 PARTS LIST

NO.	PART NO.	QTY.	DESCRIPTION
1	JA-13002-6	1	BRACKET- Seat (L.H.)
2	JA-35300-3	4	SPACER- Seat slide
3	JA-48003-6	1	PIN- Cotter
4	JA-89118-1	1	BOX- Tool
5	JA-35828-8	1	SPRING- Seat switch
6	JA-44702-2	2	WASHER- Lock 1/4 ext. tooth
7	JA-34378-4	1	NUT- Safety switch mounting
8	JA-34378-5	1	BOOT- Safety switch
9	JA-12833-9	1	SWITCH- Safety
10	JA-44310-2	8	NUT- Hex 1/4-20
11	JA-44813-0	8	WASHER- Lock 1/4
12	JA-44470-6	5	NUT- Lock 1/4-20
13	JA-45200-4	5	WASHER- Flat 1/4
14	JA-30315-8	1	CLIP- Seat switch mounting
15	JA-39017-6	1	DECAL
16	JA-40018-2	4	SCREW- 5/16-18 x 5/8 hex hd.
17	JA-44813-6	12	WASHER- Lock 5/16 hvy
18	JA-38063-0	1	PLATE- Seat mounting
19	JA-12408-4	1	SEAT ASSEMBLY
20	JA-40401-4	14	SCREW- 1/4-20 x 1/2
21	JA-35188-8	1	HINGE- Seat
22	JA-35178-3	1	KNOB- Seat adjuster
23	JA-12150-6	1	BRACKET- Seat (R.H.)
24	JA-39012-1	1	PAD- Foot (L.H.)
25	JA-46302-3	13	WASHER- Plain 1/4
26	JA-31103-2	1	SPRING- Shift stop
27	JA-34418-4	1	STOP- Shift
28	JA-44004-6	2	BOLT- 1/4-20 x 1/2 fl. hd.
29	JA-40293-4	1	SCREW- 1/4-20 x 1/2 bit fl. hd.
30	JA-39504-9	1	INSERT- Body gear
31	JA-44624-5	4	NUT- Speed
32	JA-44701-0	4	WASHER- Ext. lock 1/4"
33	JA-38011-9	1	PAD- Foot (R.H.)
34	JA-35888-8	4	MOUNTING- Fender
35	JA-35351-5	2	MOUNTING- Bracket
36	JA-48139-7	4	PIN- 1/4 x 1 1/4 roll
37	JA-45300-9	5	WASHER- 5/16 SAE Plain
38	JA-35175-6	4	MOUNTING- Flexible
39	JA-44310-6	6	NUT- Hex 5/16 x 18
40	JA-44730-2	2	WASHER- 1/4" ext, lock (16 H.P.)
41	JA-35195-5	1	WIRE- Ground strap (16 H.P.)
42	JA-35230-2	1	BRACKET- Tail light wire (16 H.P.)
43	JA-89101-8	1	DECAL- Homelite/Jacobson (16")
44	JA-44431-2	4	NUT- 10-32 hex (16 H.P.)
45	JA-44611-6	4	WASHER- Lock #10
46	JA-39575-7	2	REFLECTOR (10 H.P. & 12 H.P.)
47	JA-12867-7	2	TAIL LIGHT ASSEMBLY (16 H.P.)
48	JA-99118-2	1	FENDER- Rear (Incl. #43)
49	JA-35248-8	1	CLIP

FIGURE 8
(INSTRUMENT PANEL)

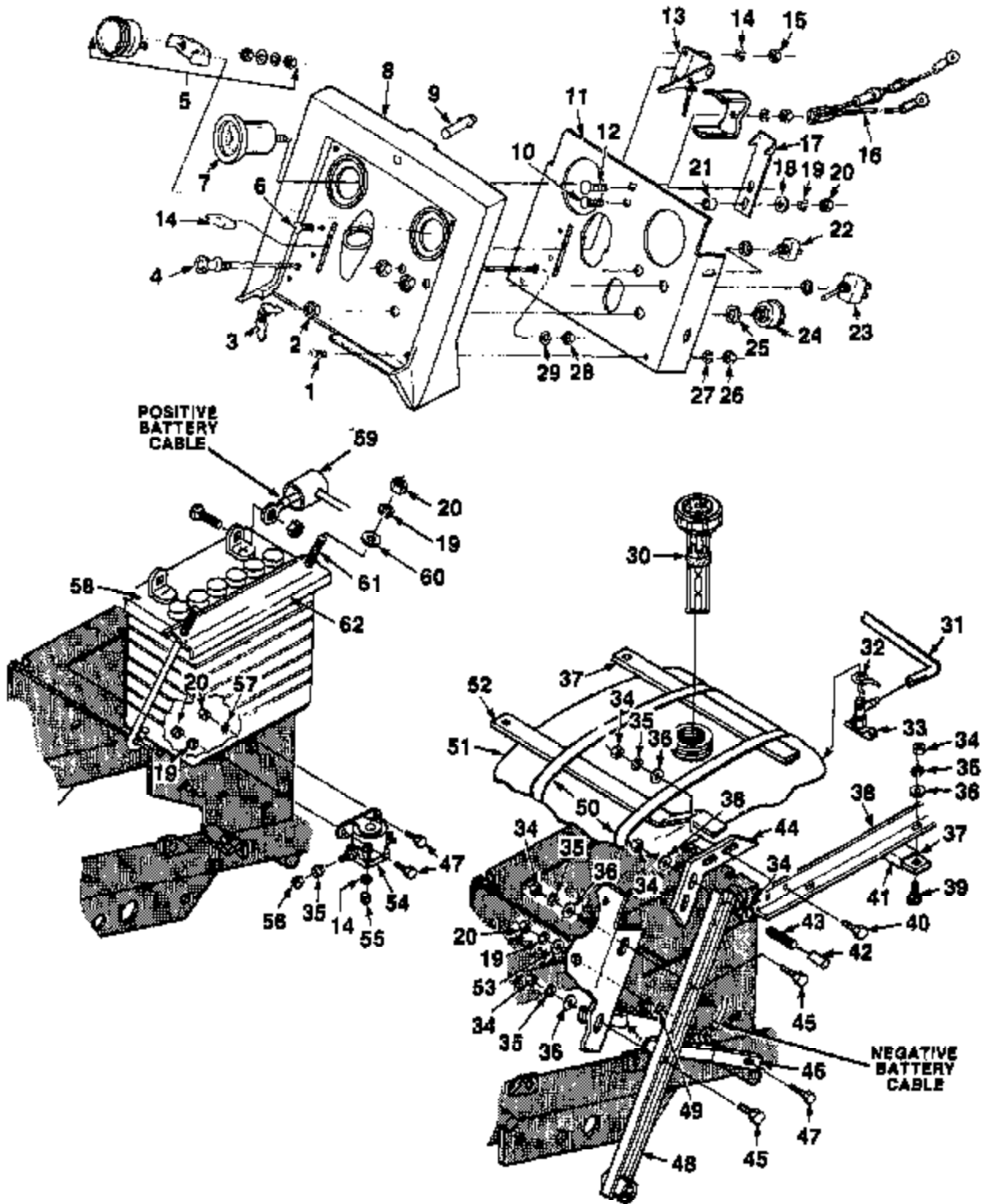


FIGURE 8 PARTS LIST

NO.	PART NO.	QTY.	DESCRIPTION
1	JA-40386-8	4	SCREW- 8-32 x 1/2 CR hd.
2	JA-36896-8	1	NUT
3	JA-34308-0	1	KEY (set of 2)
4	JA-13065-7	1	CHOKE CONTROL ASSEMBLY
5	JA-10791-7	1	AMMETER
6	JA-40391-4	2	SCREW- 10-24 x 3/4 C/R Truss hd.
7	JA-99620-0	1	HOUR METER (18 H.P.)
8	JA-39805-1	1	PANEL- Dash
9	JA-35867-8	1	ACTIVATOR- Hood release
10	JA-44044-8	1	SCREW- 1/4-20 x 1 carr.
11	JA-39805-6	1	PLATE- Instrument
12	JA-48358-0	1	RIVET- 1/4 x 1 button hd.
13	JA-12196-3	1	THROTTLE CONTROL & CABLE
14	JA-44611-6	4	WASHER- Lock #10 hvy.
15	JA-44431-0	2	NUT- 10-24 hex
16	JA-13060-1	1	HARNES- Hour meter (16 H.P.)
17	JA-33854-0	1	LATCH- Lock spring hood
18	JA-45200-2	1	WASHER- 1/4 flat
19	JA-44813-0	7	WASHER- Lock 1/4 hvy.
20	JA-44310-2	7	NUT- 1/4-20 hex
21	JA-36083-8	1	SPACER
22	JA-15899-2	1	SWITCH- Headlight (18 H.P.)
23	JA-19081-5	1	SWITCH- Electric clutch
24	JA-12884-8	1	SWITCH- Ignition (Incl. Items #2, 3 & 25)
25	JA-44722-1	1	WASHER- Lock int. tooth
26	JA-44430-8	4	NUT- #8-32 hex
27	JA-44611-2	4	WASHER- Lock
28	JA-44331-2	1	NUT- 3/8-24 hex jam
29	JA-44701-4	1	WASHER- Lock 3/8 ext. tooth
30	JA-13088-4	1	FUEL TANK CAP & GAUGE (10 H.P. & 12 H.P.)
	JA-18178-3	1	FUEL TANK CAP & GAUGE (18 H.P.)
31	JA-35628-7	1	LINE- Fuel (10 H.P. & 12 H.P.)
	JA-37511-0	1	LINE- Fuel (18 H.P.)
32	JA-36961-1	1	CLAMP- Shut off valve
33	JA-10965-7	1	VALVE- Shut off
34	JA-44310-6	20	NUT- 5/16-18 hex
35	JA-44613-8	18	WASHER- Lock 5/16 hvy.
36	JA-45800-8	18	WASHER- 5/16 flat
37	JA-33853-7	1	SUPPORT- Gas tank
38	JA-13080-8	1	RAIL- R.H.
	JA-13080-7	1	RAIL- L.H.
39	JA-44008-0	4	BOLT- 5/16-18 x 7/8 carr.
40	JA-44007-8	4	SCREW- 5/16-18 x 3/4
41	JA-35929-8	2	SLEEVE- Strap
42	JA-36307-7	2	TIP- Rod
43	JA-37563-5	2	STUD- Adjuster
44	JA-39853-9	2	BRACKET- Panel mounting
45	JA-40018-4	8	SCREW- 5/16-18 x 3/4 hex hd.
46	JA-39853-6	2	CONSOLE- Support strap
47	JA-40010-8	4	SCREW- 1/4-20 x 3/4 hex hd.
48	JA-13080-9	2	ARM- Console
49	JA-44761-0	1	WASHER- Lock 1/4 ext. tooth
50	JA-60242-4	1	STRAP- Fuel tank (18 H.P.)
	JA-60242-5	1	STRAP- Fuel tank (10 H.P. & 12 H.P.)
51	JA-39804-4	1	TANK- Fuel, 3 gal 10 H.P. & 12 H.P.
	JA-39804-5	1	TANK- Fuel, 5 gal. 18 H.P.
52	JA-33873-8	2	SUPPORT- Fuel tank
53	JA-45302-3	3	WASHER- 1/4 flat
54	JA-12807-0	1	SOLENOID- Starter
55	JA-44431-2	2	NUT- #10-32 hex
56	JA-44380-8	2	NUT- 5/16-24 hex jam
57	JA-44730-4	1	WASHER- Lock 1/4 ext. tooth
58	JA-35843-2	1	BATTERY- 12 volt
59	JA-35804-4	1	CAP- Positive battery ter.
60	JA-45200-4	2	WASHER- 1/4 SAE Flat
61	JA-35946-4	2	ROD- Battery hold down
62	JA-33874-0	1	BRACKET- Battery

FIGURE 9
FRONT COWLING ASSEMBLY

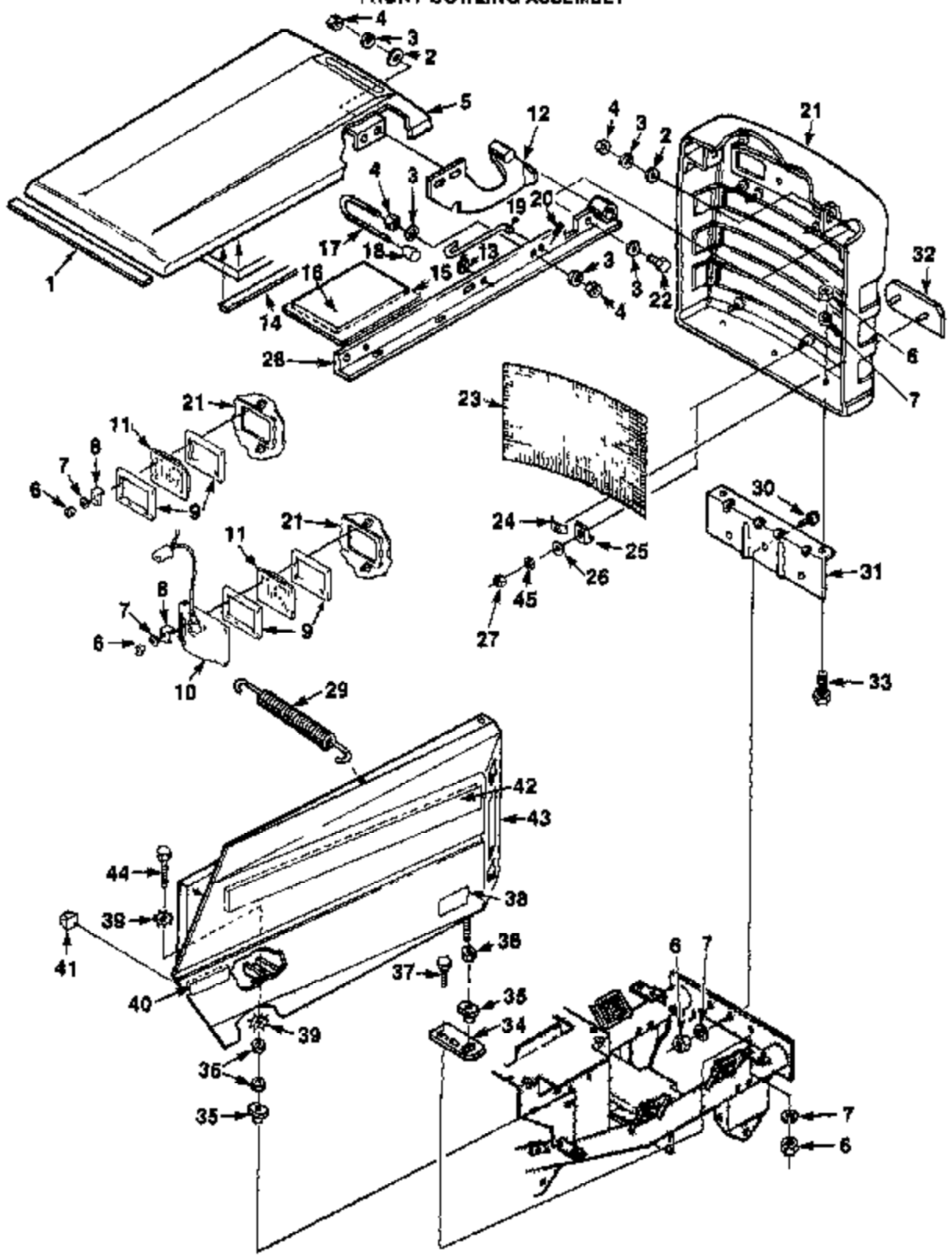


FIGURE 9 PARTS LIST

NO.	PART NO.	QTY.	DESCRIPTION
1	JA-35826-8	1	STRIP
2	JA-45200-8	8	WASHER- Flat 5/16
3	JA-44813-8	10	WASHER- Lock 5/16
4	JA-44310-8	10	NUT- Hex 5/16 x 1 1/8
5	JA-98010-8	1	HOOD ASSEMBLY
6	JA-44310-2	8	NUT- Hex 1/4-20
7	JA-44813-0	8	WASHER- Lock 1/4
8	JA-35888-5	4	CLIP- ZP
9	JA-54546-8	4	GASKET
10	JA-12193-0	1	HEADLIGHT ASSEMBLY (18 H P) (Includes item #9 & 11)
11	JA-33949-3	2	LENS- Head light
12	JA-12192-8	1	HINGE ASSEMBLY- Hood (R H)
	JA-12192-9	1	HINGE ASSEMBLY- Hood (L H)
13	JA-37562-7	1	CLIP
14	JA-35888-6	2	STRIP
15	JA-36923-7	1	COVER- Battery
16	JA-33864-0	1	DECAL- Battery warning
17	JA-37653-4	2	ADJUSTER
18	JA-35307-7	4	TIP
19	JA-33840-0	1	SUPPORT- Hood
20	JA-48135-8	1	PIN- Roll
21	JA-99037-3	1	COWLING
22	JA-40018-8	4	SCREW- 5/16-18 x 1 hex hd
23	JA-99011-3	1	GRILLE- Screen
24	JA-44552-2	2	NUT- Push
25	JA-35889-5	4	CLIP
26	JA-45200-2	4	WASHER
27	JA-44431-0	6	NUT- Hex mach 10-24
28	JA-13080-7	1	RAIL- Hood support (L H)
	JA-13060-8	1	RAIL- Hood support (R H)
29	JA-35880-6	1	SPRING
30	JA-40401-8	3	SCREW
31	JA-39008-7	1	BRACKET
32	JA-35893-8	1	INSERT- 10 H P
	JA-35893-7	1	INSERT- 12 H P
	JA-99038-6	1	INSERT- 18 H P
33	JA-40010-6	3	SCREW- 1/4-20 x 5/8
34	JA-35887-8	4	SUPPORT- Side panel front
35	JA-35888-1	4	NUT- Side panel adj
36	JA-44311-0	8	NUT
37	JA-40011-2	4	SCREW
38	JA-99036-8	2	S P Reflector amber
39	JA-44701-4	4	WASHER
40	JA-33957-7	1	DECAL- Lift lever
41	JA-37537-0	2	BUMPER- Recess
42	JA-99101-6	2	DECAL- 80"
43	JA-99037-1	1	PANEL- R H side (Incl Item 41, 42, 40 & 38)
	JA-99037-2	1	PANEL- L H side (Incl Item 38, 41, & 42)
44	JA-35823-5	2	SCREW- 3/8-18 x 2 3/4
45	JA-44611-8	4	NUT

FIGURE 10
TRANSAXLE ASSEMBLY

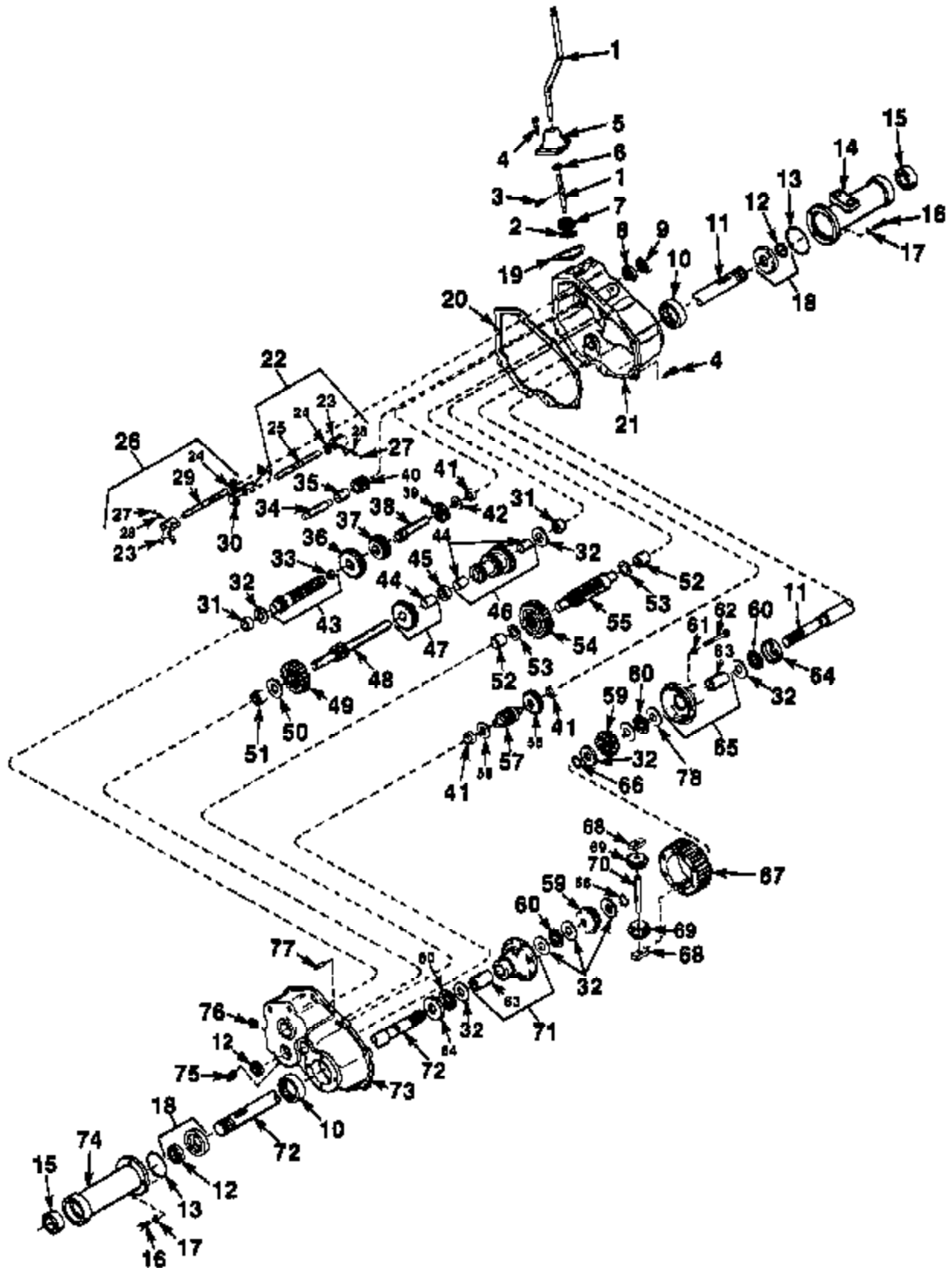


FIGURE 10 PARTS LIST

NO.	PART NO.	DESCRIPTION	NO.	PART NO.	DESCRIPTION
1	784207	LEVER- Shift	41	530106	BEARING- Needle
2	792018	RING- Snap	42	780051	WASHER- Thrust
3	792049	PIN- Roll	43	776189-A	PINION SHAFT & BEARING ASSY. (Incl. Ref. #93)
4	792007	SCREW- Socket Hd. Cap. 1/2-20 x 3/4	44	780053	BUSHING
5	784093	HOUSING- Shift lever	45	786024	SPACER
6	783001	RING- Quad	46	776036-A	GEAR CLUSTER ASSEMBLY (Incl. Ref. #44)
7	784094	KEEPER- Shift lever	47	778034	GEAR CLUSTER ASSEMBLY (Incl. Ref. #44)
8	780024	BEARING- Ball	48	778029-A	BRAKE SHAFT & GEAR
9	786026	SEAL- Oil	49	778037	IDLER GEAR
10	780046	BEARING- Needle	50	780007	WASHER- Thrust
11	774232	AXLE- Right hand	51	780046	BEARING- Needle
12	788008	SEAL- Oil	52	780047	BEARING- Needle
13	788024	"O" RING	53	780062	WASHER- Thrust
14	782045	HOUSING- Axle	54	778038	GEAR- Output
15	780060	BEARING- Ball	55	778028	PINION- Out put
16	792048	SCREW- Hex hd. 3/8-18 x 1 1/4	56	778038	SPUR GEAR (22 teeth)
17	792011	WASHER- Lock-split 3/8"	57	776031	SHAFT & PINION
18	788021	SEAL & RETAINER ASSEMBLY Oil (Incl. #12)	58	780001	WASHER
19	788022	GASKET- Shift lever housing	59	778095	GEAR- Bevel
20	788023	GASKET- Case & Cover	60	780089	BEARING- Thrust
21	770029	TRANSAXLE CASE ASSEMBLY (Incl. Ref. 31, 41, 52, & 10)	61	792008	WASHER- Lock 1/4"
22	784054	SHIFT ROD ASSEMBLY (Incl. #28, 23, 24, 25 & 27)	62	792005	SCREW- Hex hd. cap 1/4-20 x 2 1/2
23	784004	FORK- Shifter	63	780041	BUSHING
24	782017	RING- Snap	64	780042	RACE- Thrust
25	784055	ROD- Shifter (3rd & 4th)	65	774072-A	CARRIER ASSEMBLY- Differential (Incl. Ref #63)
26	784056	ROD SHIFT ASSEMBLY (Incl. 28, 23, 27, 28)	66	792018	RING- Snap
27	792004	BALL- Steel	67	779033-A	RING- Gear
28	792003	SPRING	68	786027	BLOCK- Drive
29	784067	ROD- Shifter (low)	69	778084	PINION- Bevel
30	784074	STOP- Shifter	70	788018	PIN- Drive
31	780048	BEARING- Needle	71	774071-A	DIFFERENTIAL CARRIER ASSY. (Incl. Ref. #63)
32	780042	WASHER- Thrust	72	774231	AXLE- Left hand
33	780016	BEARING	73	772068	TRANSAXLE COVER ASSEMBLY (Incl. Ref. 31, 41, 52, 51, & 10)
34	778030	SHAFT- Reverse Idler	74	782046	HOUSING- Axle
35	786026	SPACER- Reverse Idler	76	792018	PLUG- Magnetic drain
36	778020	GEAR- Shifting (1st & 2nd & Rev.)	78	792010	PLUG- Pipe
37	778019-A	GEAR- Shifting (3rd & 4th)	77	786028	PIN- Dowel
38	778087	SHAFT- Input	78	780107	WASHER
39	778024-A	SPUR GEAR- Input shaft			
40	778018	IDLER- Reverse			

Order From:

TECUMSEH PRODUCTS COMPANY

Lauson - Powered Products Parts Depot Division
Griffon, Wisconsin

ALWAYS GIVE SERIAL NO. WHEN ORDERING PARTS.

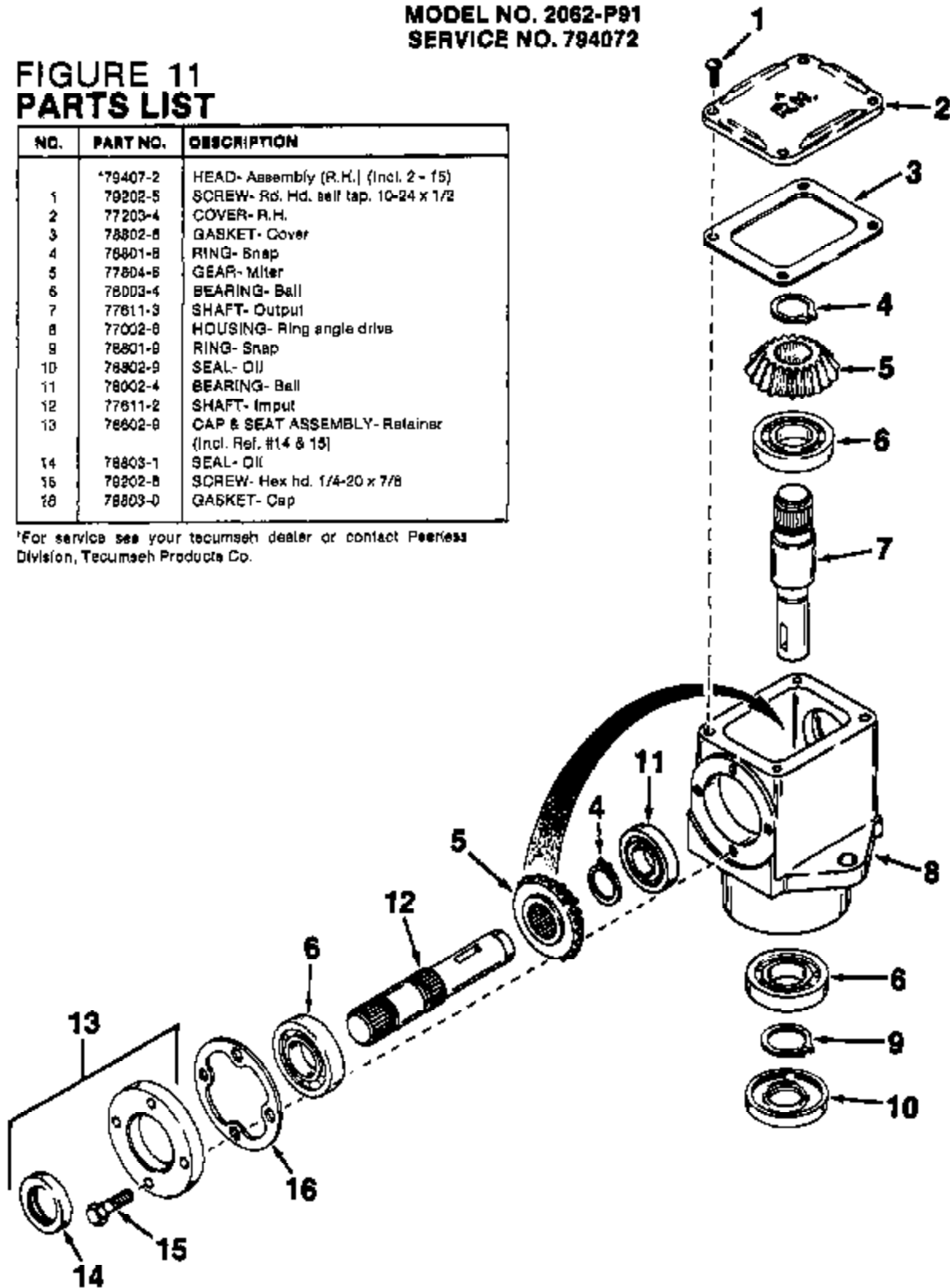
FIGURE 11 RIGHT ANGLE DRIVE HEAD ASSEMBLY

**MODEL NO. 2062-P91
SERVICE NO. 784072**

FIGURE 11 PARTS LIST

NO.	PART NO.	DESCRIPTION
	*79407-2	HEAD- Assembly (R.H.) (Incl. 2 - 15)
1	79202-5	SCREW- Rd. Hd. self tap. 10-24 x 1/2
2	77203-4	COVER- R.H.
3	78802-8	GASKET- Cover
4	78801-8	RING- Snap
5	77804-8	GEAR- Miter
6	78003-4	BEARING- Ball
7	77611-3	SHAFT- Output
8	77002-8	HOUSING- Ring angle drive
9	78801-9	RING- Snap
10	78802-9	SEAL- Oil
11	78002-4	BEARING- Ball
12	77611-2	SHAFT- Input
13	78602-8	CAP & SEAT ASSEMBLY- Retainer (Incl. Ref. #14 & 15)
14	78803-1	SEAL- Oil
15	79202-5	SCREW- Hex hd. 1/4-20 x 7/8
16	78803-0	GASKET- Cap

*For service see your tecumseh dealer or contact Peerless Division, Tecumseh Products Co.



ALWAYS GIVE SERIAL NO. WHEN ORDERING PARTS.

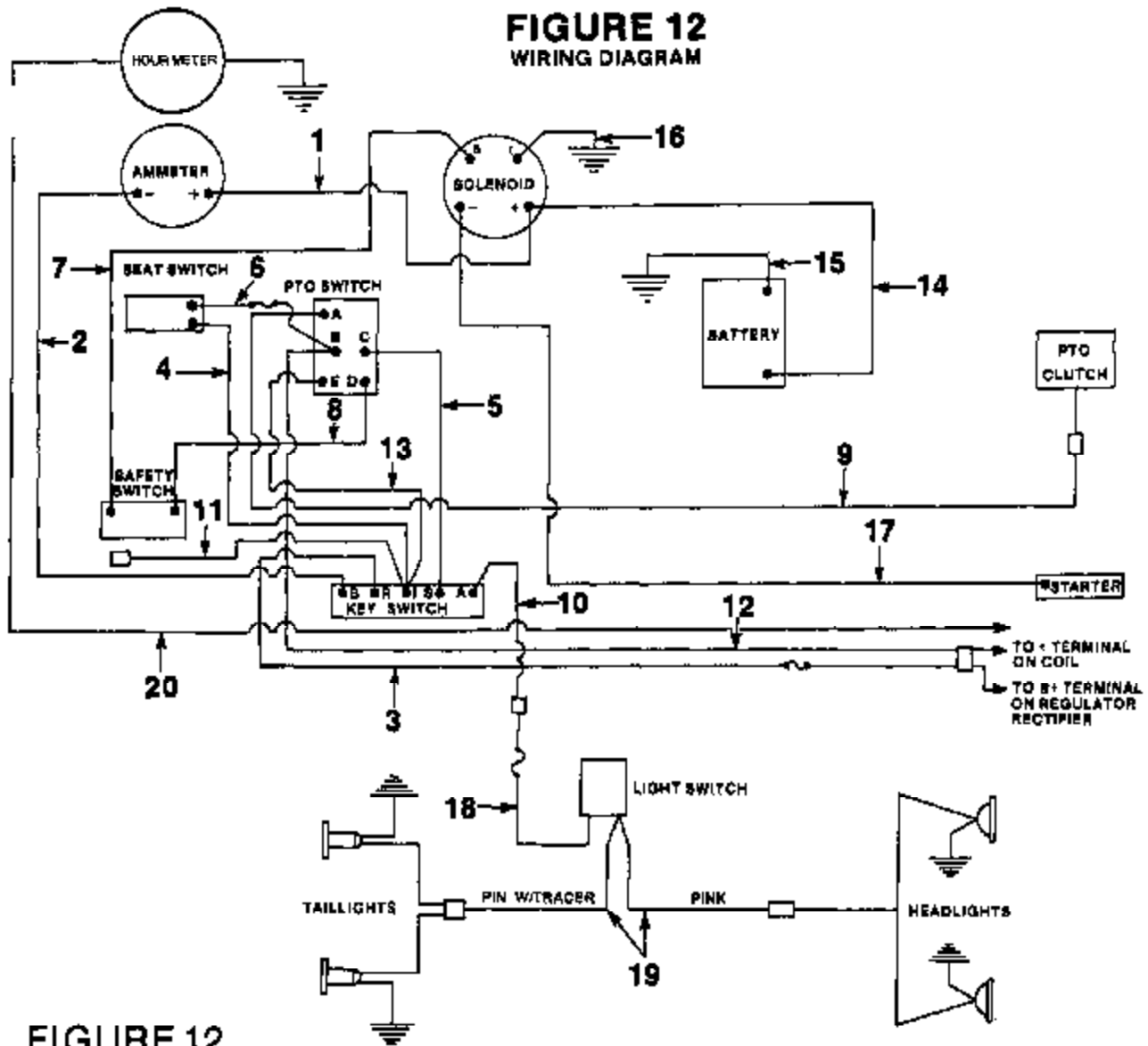


FIGURE 12
WIRING DIAGRAM

FIGURE 12
PARTS LIST

NO.	PART NO.	QTY.	DESCRIPTION
	JA-11776-4	1	WIRING HARNESS (Incl. Ref. # 1 - 13)
1		1	WIRING- Red solenoid to ammeter
2		1	WIRE- Yellow, ammeter to key switch
3		1	WIRE- Orange key to switch to rectifier (fused 30 Amp)
4		1	WIRE- Violet- Key switch to seat switch
5		1	WIRE- White key switch to PTO switch
6		1	WIRE- Violet, seat switch to PTO switch (fused, 6 Amp)
7		1	WIRE- White solenoid to safety switch
8		1	WIRE- White safety switch to PTO switch
9		1	WIRE- Green PTO switch to PTO clutch
10		1	WIRE- Pink, key switch to light accessory (pig tail)
11		1	WIRE- Orange, Key switch to lift accessory (pig tail)

NO.	PART NO.	QTY.	DESCRIPTION
12		1	WIRE- Light blue, PTO switch to coil
13		1	WIRE- Violet, key switch to PTO switch
14	JA-35942-4	1	CABLE- Red, battery to solenoid
15	JA-37552-2	1	CABLE- Black, battery to ground
16	JA-11220-6	1	CABLE- Black, solenoid to ground
17	JA-35686-4	1	CABLE- White, solenoid to starter
*	JA-47316-4	2	CABLE- Tie, sta-strap
*	JA-35230-2	3	RETAINER- White-harness hold down
18	JA-35230-7	1	CABLE- Pink, switch to connector
19	JA-35230-9	1	CABLE- Pink w/yellow trace (Headlight to switch to taillight)
20	JA-13080-1	1	WIRING- Harness (Hour meter)

* 14 & 16 H.P. Only.

HOMELITE DIVISION OF TEXTRON INC.
P.O. Box 7047
14401 Carowinds Boulevard
Charlotte, N.C. 28217

Overseas Offices

Homelite Division of Textron
Korengarstraat 1
2153 BM Nieuw Vennepe
The Netherlands

Homelite Division of Textron
Pacific Limited
P.O. Box 209
Blackburn, 3130
Victoria, Australia

HOMELITE **TEXTRON**

Homelite Division of Textron Inc