

REV. 4
PART NO. 24228
Printed in U.S.A.
Price .35

PARTS LIST

HOMELITE®

XL-12

WITH PYRAMID REED SYSTEM

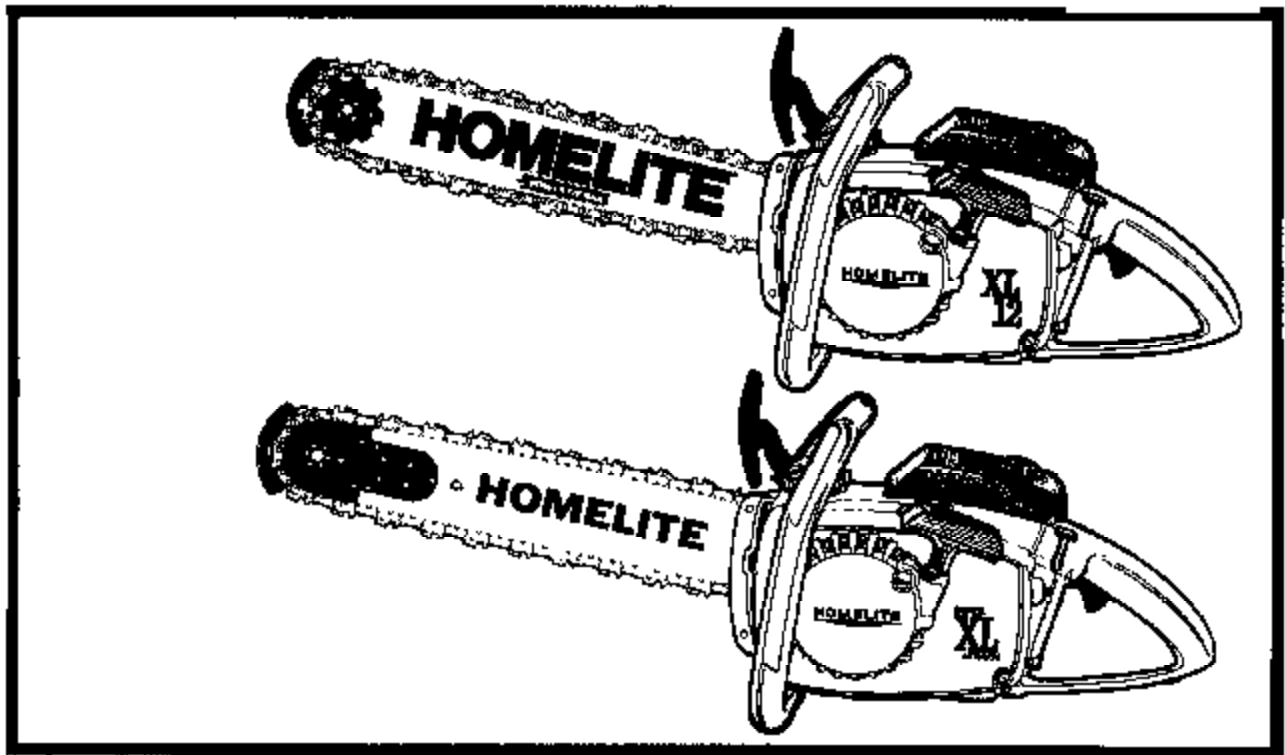
AND

SXL-AO CHAIN SAWS

UT10080-D

UT10045-C

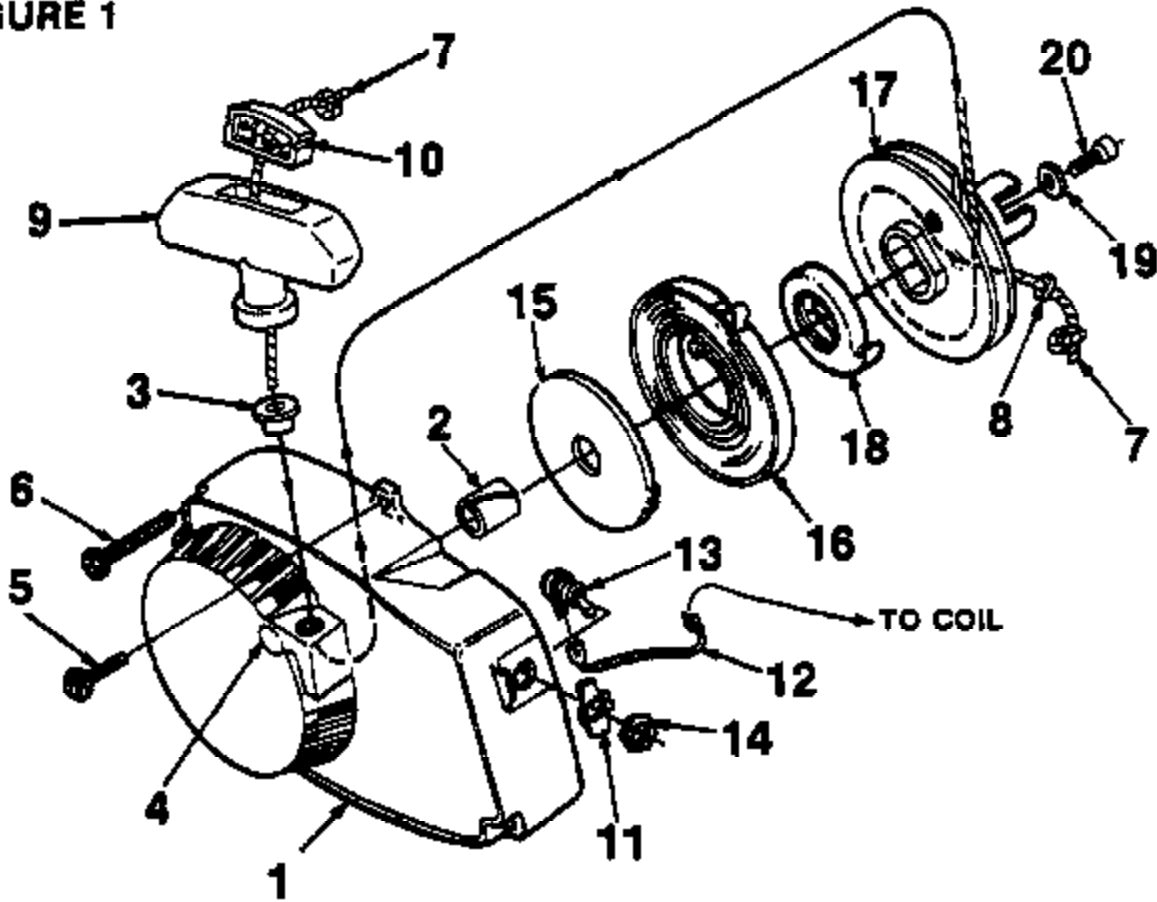
UT10045-D



HOMELITE **TEXTRON**
Homelite Division of Textron Inc.

XL-12/SXL-A0

FIGURE 1



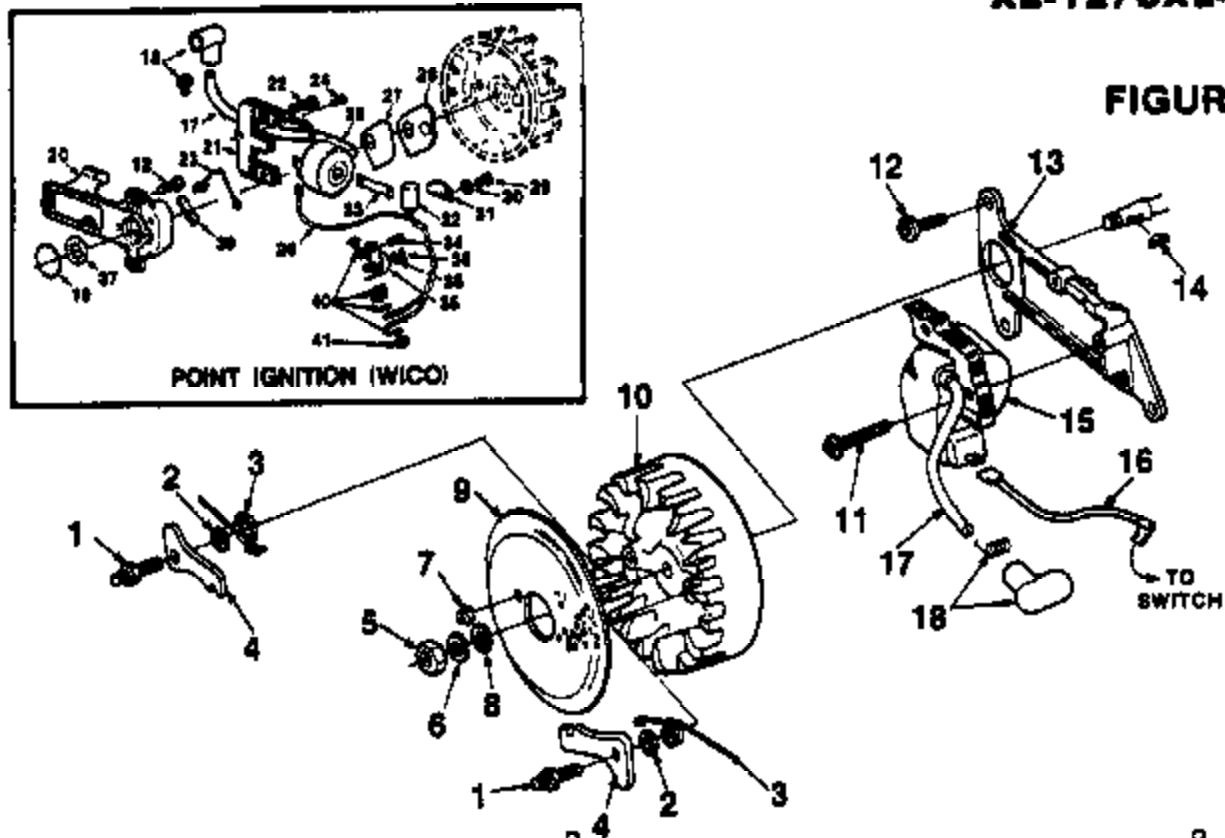
NO.	DESCRIPTION	PART NO.	XL-12	SXL-A0	QTY.	NO.	DESCRIPTION	PART NO.	XL-12	SXL-A0	QTY.
1	HOUSING- Fan Includes	A-84518	x	x	1	12	LEAD- Ground (solid state)	A-94850	x	x	1
2	BUSHING- Starter	64443	x	x	1	13	LEAD- Ground (point ignition)	A-58031	x	x	1
3	BUSHING- Rope	67177	x	x	1	14	SWITCH & LEAD	96831	x	x	1
4	DRIVE- Stud	39067	x	x	1	15	NUT	72084-A1	x	x	1
5	SCREW- Hex 12-24 x 9/16	80899	x	x	1	16	SHIELD- Spring (inner)	59636-B	x	x	1
6	SCREW- Hex 12-24 x 1 1/16	80963	x	x	3	17	SPRING- Recoil (Note 1)	A-84842	x	x	1
7	ROPE- Starter 46" long #5 includes	A-83875	x	x	1	18	PULLEY- Starter	A-64446	x	x	1
8	WASHER- Fial (nylon)	83862	x	x	1	19	BUSHING- Spring	94827	x	x	1
9	GRIP- Starter rope Includes	A-89962-B	x	x	1	20	WASHER- Retainer	88783	x	x	1
10	INSERT	70018-A	x	x	1		SCREW- Hex 10-32 x 1/2	80848	x	x	1
11	PLATE- "On-Off"	85231	x	x	1						

NOTE 1: Units prior to lot #0082 using noncontained spring require shield 59639-A.

ALWAYS FURNISH MODEL AND SERIAL NUMBERS WHEN ORDERING PARTS

XL-12/SXL-AO

FIGURE 2

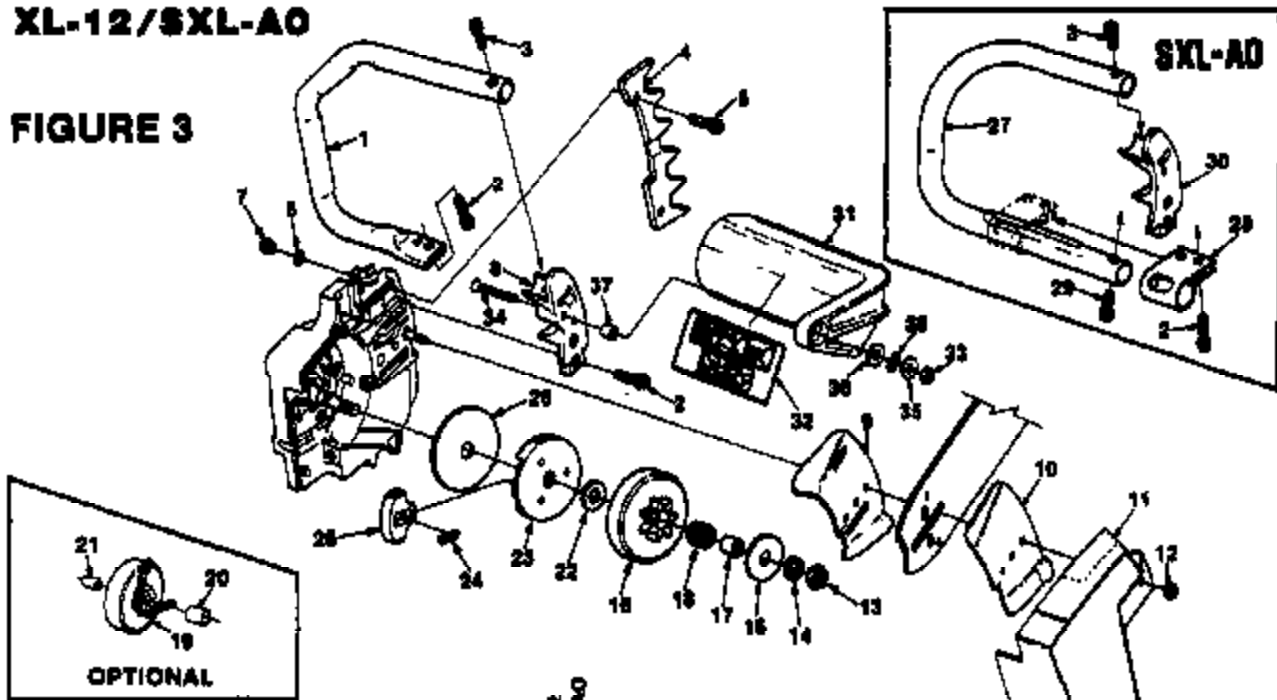


NO.	DESCRIPTION	PART NO.	XL-12	SXL-AO	QTY.	NO.	DESCRIPTION	PART NO.	XL-12	SXL-AO	QTY.
1	BTUD- Shoulder	58757-E	x	x	2	25	COIL- with lead (point ignition)	A-94325	x	x	1
2	WASHER- Lock	70901	x	x	2		Includes				
3	SPRING- Starter pawl	85375-2	x	x	2	26	LEAD	93095	x	x	1
4	PAWL- Starter	58766	x	x	2	27	GASKET- Breaker box cover (point ignition)	58810	x	x	1
5	NUT- Hex (5/16-24)	81117	x	x	1	28	COVER- Breaker box (point ignition)	58811	x	x	1
6	WASHER- Lock (5/16)	83002	x	x	1	29	SCREW- Hd (8-32 x 3/16) (point ignition)	30281	x	x	1
7	NUT- Center lock (#10-32)	81206	x	x	2	30	WASHER- Lock (point ignition)	83060	x	x	2
8	WASHER- Flat (5/16)	84056	x	x	1	31	CLAMP- Condenser (point ignition)	59622	x	x	1
9	SCREEN- Starter	68766	x	x	1	32	CONDENSER (point ignition)	83250-A	x	x	1
10	ROTOR- Magneto	70839	x	x	1	33	CLIP- Coil retaining (point ignition)	83726	x	x	1
11	SCREW- Hex washer hd (8-32 x 3/4)	82246	x	x	2	34	SCREW- Contact plate (point ignition)	76421	x	x	1
12	SCREW- Hex hd (12-24 x 9/16)	80899	x	x	3	35	POINTS- Breaker (point ignition)	A-58814-A	x	x	1
13	PLATE- Ignition coil mtg (Solid state)	94325-1	x	x	1		Includes				
14	KEY- Rotor (woodruff)	75078	x	x	1	36	WASHER- Plain	28028	x	x	A/R
15	MODULE & CORE (Solid state)	A-94805-S	x	x	1	37	SEAL- Felt	59780	x	x	1
16	LEAD- Ground (Solid state)	A-94850	x	x	1	38	CLIP	28008	x	x	1
17	LEAD- Ground (Point ignition)	A-59031	x	x	1	39	CAM- Felt		x	x	1
17	LEAD- High tension	58966	x	x	1	40	BLOCK- Terminal (point ignition)	A-86192	x	x	1
18	TERMINAL- High tension	A-33055	x	x	1		Includes				
18	GASKET- Stator (point ignition)	59538	x	x	1	41	NUT- Connection stud	93099	x	x	1
20	BOX- Breaker (point ignition)	A-94566	x	x	1						
	Includes										
21	CORE	93098	x	x	1						
22	SCREW- Hex washer hd (8-32 x 3/4)	82246	x	x	2						
23	CLIP- Breaker box cover (point ignition)	76413	x	x	1						
24	SCREW- Terminal (point ignition)	84090	x	x	1						

ALWAYS FURNISH MODEL AND SERIAL NUMBERS WHEN ORDERING PARTS

XL-12/SXL-AO

FIGURE 3



NO.	DESCRIPTION	PART NO.	QTY.	
			XL-12	SXL-AO
1	HANDLE BAR- Flush cut	A-85793-B	x	1
2	SCREW- 12-24 x 3/4	80867	x	4
3	SCREW- Backet hd 1/4-20 x 1	80428-1	x	1
4	BUMPER KIT- Spiked (Accessory)	DA-59043	x	1
	Includes			
5	SCREW- Hex 12-24 x 3/4	80867	x	2
6	WASHER- Lock #12	70901	x	2
7	NUT- Hex 12-24	81066	x	2
8	BRACKET- Handle bar KIT- Guide bar plate	58246-7 A-70815	x	1
	Includes			
9	PLATE- Guide bar (inner)	70396	x	1
10	PLATE- Guide bar (outer)	70400	x	1
11	COVER- Drivecase	58750-18	x	1
12	NUT- Hex 3/8-18	81089-2	x	2
13	NUT- Lock 3/8-24	81124	x	1
14	WASHER- Lock 3/8	83018	x	1
15	WASHER- Thrust (outer)	85084	x	1
16	SPROCKET & DRUM 7 tooth (std.) (Note 2) 3/8, 7 tooth	A-95459	x	1
17	RACE- Inner	85748-B	x	1
18	BEARING- Roller	84124	x	1
19	SPROCKET & DRUM (opt) 3/8" pitch, 8 T	A-83348	x	1
	404 pitch, 7 T	A-59655	x	1
	Includes			
20	BEARING- Needle (Note 3)	72311	x	1
21	RACE- Inner (Note 3) HUB & DRUM- "splined" (opt) (used with index #17, 18, 22 and rim sprockets)	55584 A-85890	x	1
	SPROCKET- Splined rim typed 3/8" 7 T (Note 2)	56056	x	1
	404 pitch, 7 tooth (note 2)	53285	x	1
22	WASHER- Thrust (inner)	58833	x	1
	CLUTCH & COVER	A-69480-C	x	1
	Includes			
23	PLATE- Clutch	85760-1B	x	1

NO.	DESCRIPTION	PART NO.	QTY.	
			XL-12	SXL-AO
24	SPRING- Clutch	87053	x	3
25	SHOE- Clutch	89481	x	3
26	COVER- Clutch	86054	x	1
27	HANDLE BAR- Flush cut	A-70385	x	1
	Includes			
28	CLAMP	83991-A	x	1
29	SCREW- Soc hd 1/4-20	80428-1	x	1
30	BRACKET- Handle bar (Note 1)	86851-12	x	1
ACCESSORIES NOT SHOWN				
	HANDLE BAR- Wrap around (Accessory) (Note 1)	A-83422-A	x	1
	Includes			
	HANDLE BAR	A-83421	x	1
	BRACKET- Handle bar	86851-6B	x	1
	BRACKET- Handle bar mtg	83405	x	1
	SCREW- Hex hd 12-24 x 5/8	80678	x	1
31	GUARD- Hand	A-95088	x	1
	Includes			
32	DECAL	98890	x	1
33	NUT- 12/24	81226	x	1
34	SCREW- (12-24 x 1 1/4)	82223	x	4
35	WASHER (5/16)	98835	x	1
36	WASHER	84065	x	1
37	SPACER	98837	x	1
38	WASHER- Spring wave	98767	x	1

NOTE 1: A-83421 Handle bar requires 86851-6B bracket to replace index #30, and another 83405 bracket which mounts on drivecase cover. 80678 screw attaches drivecase cover bracket to handle bar.

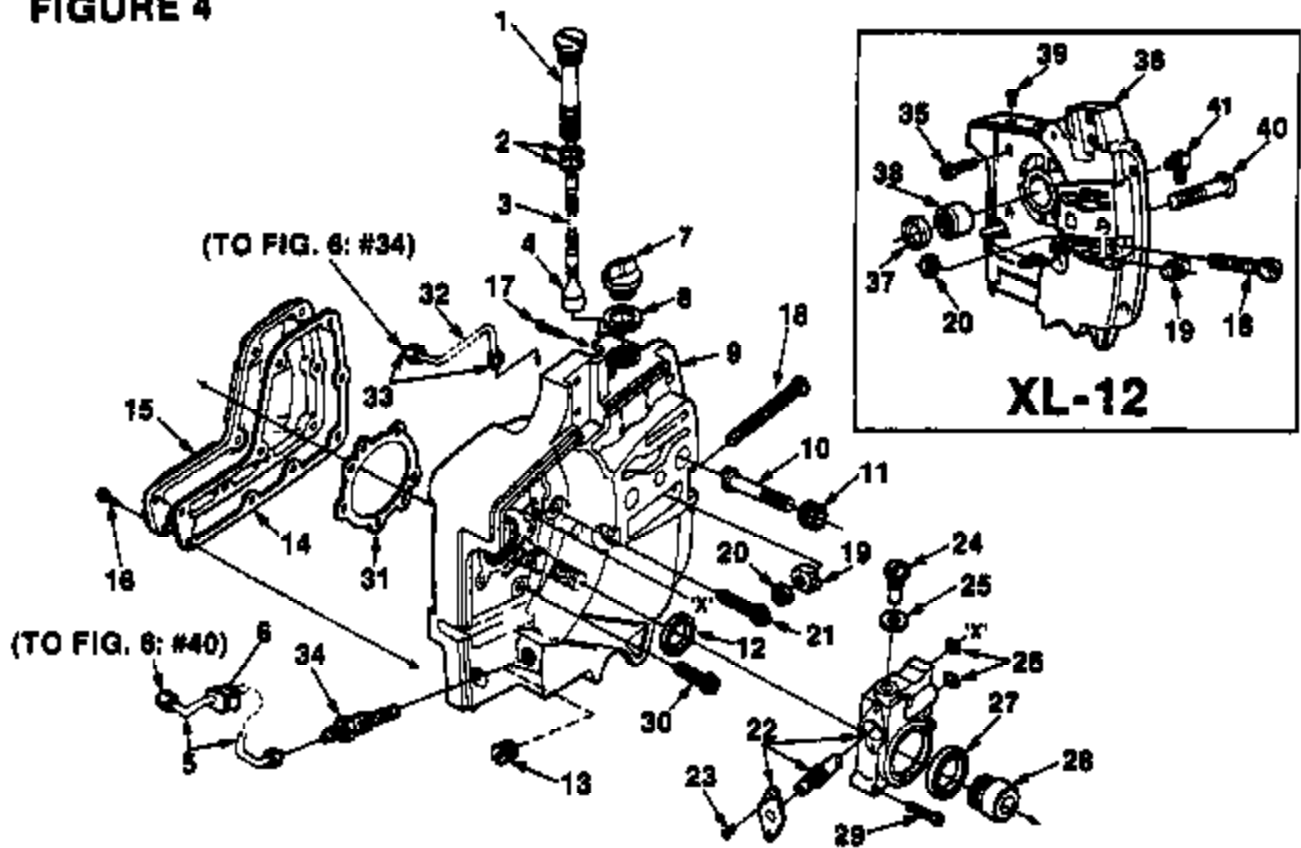
NOTE 2: Check type and number of teeth before ordering. "Splined" hub and drum requires one of the "Splined" sprockets listed.

NOTE 3: Race 86884 required with #72311 needle bearing.

ALWAYS FURNISH MODEL AND SERIAL NUMBERS WHEN ORDERING PARTS

XL-12/SXL-AO

FIGURE 4

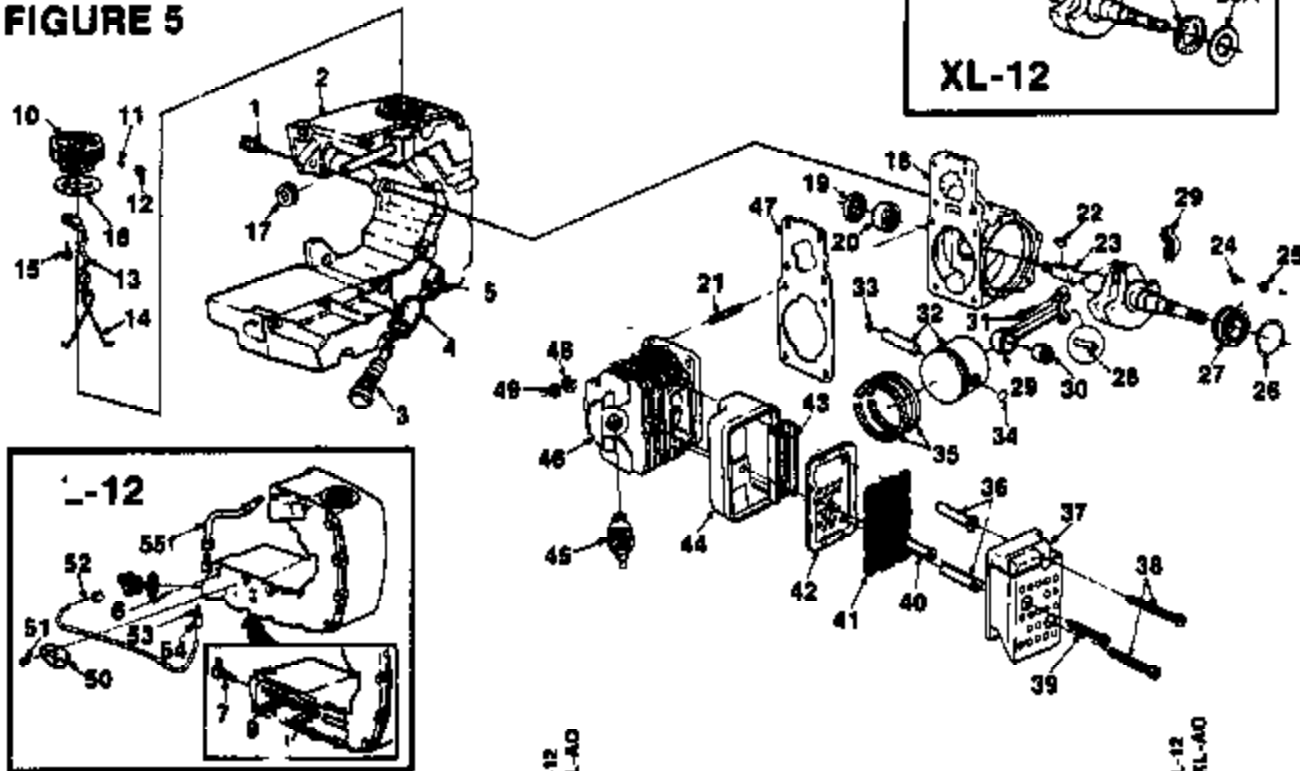


NO.	DESCRIPTION	PART NO.	XL-12		NO.	DESCRIPTION	PART NO.	XL-12	
			XL-12	SXL-AO				XL-12	SXL-AO
	OIL FILTER ASSEMBLY	A-89371	x	1	21	SCREW- Hex 12-24 x 1	80884	x	1
	Includes				22	PUMP- Automatic oil	A-58808-B	x	1
1	TUBE- Oil line	58325-2	x	1		Includes			
2	"O" RING	58786	x	2	23	SCREW- Pan 4-40 x 1/4	80815	x	2
3	TUBING- Rubber 2 1/4"	70308-09	x	1	24	SCREW- Cam	84102-A	x	1
4	FILTER- Oil	A-88583	x	1	25	GASKET	58738	x	1
5	LINE- Oil	A-58818	x	1	26	"O" RING	58074	x	2
	Includes				27	SEAL- Felt	58926	x	1
6	GROMMET	58784	x	1	28	WORM	58875	x	1
7	CAP- Filler oil	A-83717-C	x	1	29	SCREW- Fil 8-32 x 3/4	80248	x	3
	Includes				30	SCREW- Hex 12-24 x 9/16	80899	x	4
8	GASKET	58807	x	1	31	GASKET- Crankcase	63355	x	1
9	DRIVECASE	A-58830-H	x	1	32	LINE- Oil (Discharge)	A-58806	x	1
	Includes					Includes			
10	STUD- Guide bar 3/8	67475	x	2	33	SLEEVE- Compression	25301	x	2
11	INSERT- Threaded	67476	x	2	34	FILTER- Oil (Manual oil)	A-89804-A	x	1
12	SEAL	58308-B	x	1	35	SCREW- (12-24 x 9/16)	80899	x	5
13	PLUG	28097	x	1	36	DRIVECASE	A-58825-E	x	1
14	GASKET- Oil reservoir	68710	x	1		Includes			
15	COVER- Oil reservoir	58649-4A	x	1	37	SEAL	12282-A	x	1
16	SCREW- Rd 8-32 x 1/2	80513	x	9	38	BEARING- Needle	58855	x	1
	SCREW- Set (not shown)	80742	x	1	39	PLUG- Button	94242	x	1
17	PIN- Cotter	88301	x	1	40	BOLT- Guide bar	67485	x	2
18	SCREW- Guide bar adjusting	63226	x	1	41	FITTING- Tube elbow (90° connection)	56707	x	1
19	PIN- Bar adjusting	83039	x	1					
20	NUT- Lock, 1/4-20	81204	x	1					

ALWAYS FURNISH MODEL AND SERIAL NUMBERS WHEN ORDERING PARTS

XL-12/SXL-AO

FIGURE 5



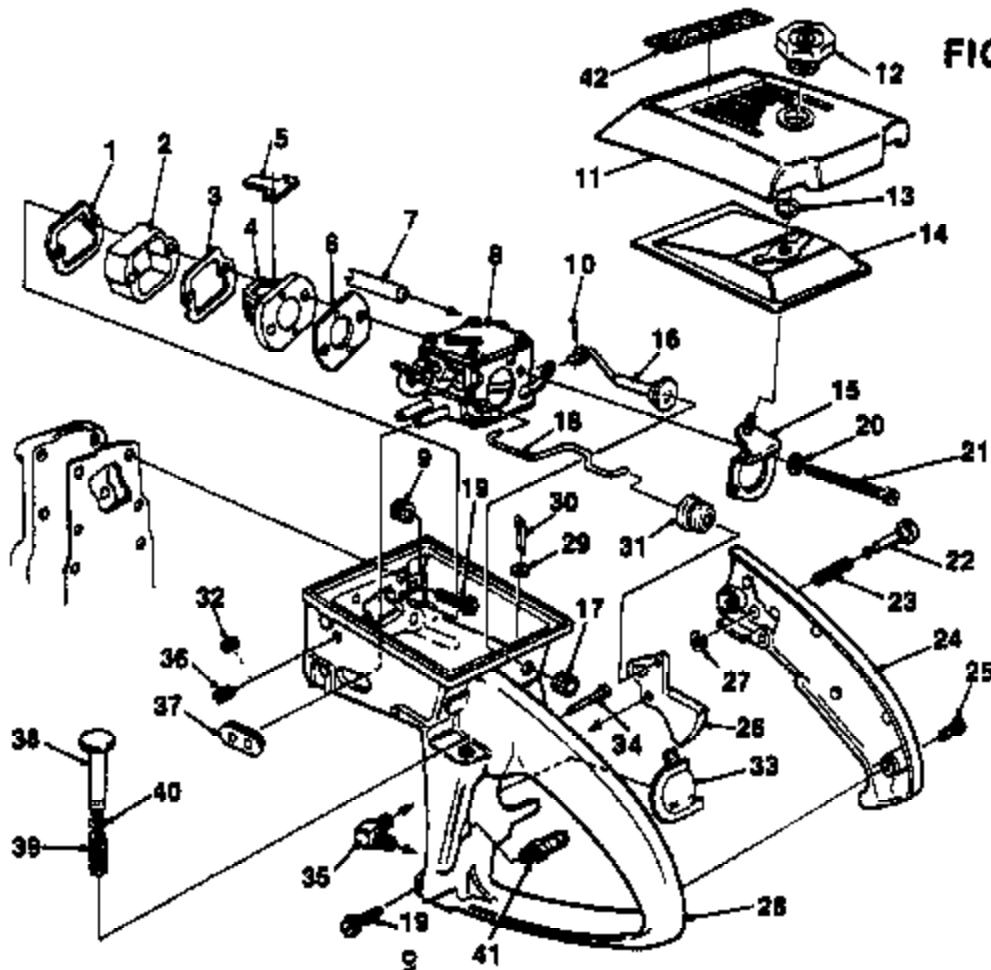
NO.	DESCRIPTION	PART NO.	XL-12	SXL-AO	QTY.	NO.	DESCRIPTION	PART NO.	XL-12	SXL-AO	QTY.
1	SCREW- Shoulder	83407	x	x	3	32	PISTON & PIN	A-58903-C	x	x	1
2	TANK- Fuel (Note 1)	A-83898-B	x	x	1		PISTON & PIN	A-58438	x	x	1
	TANK- Fuel (Note 1)	A-88345-A	x	x	1		Includes				
3	FILTER- Fuel	A-69823	x	x	1	33	RING- Retaining	75120	x	x	1
	Includes					34	RING- Retaining	64813	x	x	1
4	FELT- Filter	64053	x	x	1	35	PISTON RING	66677	x	x	2
5	TUBING- Fuel 1/4"	70310-37	x	x	1		PISTON RING	59436-1A	x	x	2
6	PIN- Cotter (Manual)	88301	x	x	1		MUFFLER ASSEMBLY (Note 2)	A-94219-A	x	x	1
7	VALVE- Inlet check (Manual)	A-59010	x	x	1		Includes				
	Includes					36	SPACER- Muffler	93983-01	x	x	2
8	BALL (Not shown)	25527	x	x	1	37	CAP- Muffler & Shield	A-86988	x	x	1
9	FILTER- Oil (Manual)	A-69009-A	x	x	1	38	SCREW- Hex hd				
10	LINE- Pick-up (Manual)	59000	x	x	1		(12-24 x 2 1/4)	94128	x	x	2
	Includes					39	SCREW- Hex hd				
11	VALVE- Check	69451	x	x	1		(12-24 x 1 7/8)	94128	x	x	1
12	FILTER- Fuel cap	69454	x	x	1	40	SPACER- Muffler	93983-02	x	x	1
13	CHAIN- Bead	68502	x	x	1	41	SCREEN- Spark arrester	63979	x	x	1
14	PETAINER	98536	x	x	1	42	BAFFLE- Muffler	93980	x	x	1
15	SCREW- Pan hd 46 x 1/4	82268-A	x	x	1	43	PLATE- Muffler	94133-A	x	x	1
16	GASKET- Fuel filler cap	89601	x	x	1	44	BODY- Muffler	93981	x	x	1
17	GROMMET	88048	x	x	1	45	SPARK PLUG (CJ8)	83710-A	x	x	1
18	CRANKCASE	A-85736	x	x	1		SPARK PLUG (CJ8)	83647-S	x	x	1
	Includes					46	CYLINDER	A-88715	x	x	1
19	SEAL	12282-A	x	x	1		CYLINDER	A-89714	x	x	1
20	BEARING	58956	x	x	1		Includes				
21	STUD	56871	x	x	4	47	GASKET- Cylinder	59771	x	x	1
22	KEY- Woodruff	75076	x	x	1	48	WASHER- Lock 1/4	63061	x	x	4
23	CRANKSHAFT	63486-1	x	x	1	49	NUT- 1/4-28	98212	x	x	4
23A	CR/ NKSHAFT	83497-1	x	x	1	50	PLATE- Retaining	69016	x	x	1
24	SCREW- Torx	70306	x	x	2	51	SCREW- Pan hd (4-40 x 1/4)	80619	x	x	2
25	WASHER- Lock	69706	x	x	2	52	LINE- Oil	A-59012	x	x	1
26	RING- Retaining	58319-A	x	x	2		Includes				
26A	RACE- Needle thrust	58725	x	x	1	53	SLEEVE- Compression (1/8)	26301	x	x	2
27	BEARING- Ball	58190	x	x	2	54	NUT- Compression (5/16-24)	26302	x	x	1
27A	BEARING- Needle thrust	58726	x	x	1	55	LINE- Oil	A-94946	x	x	1
28	ROLLER SET (31)	A-89054	x	x	1						
29	ROD- Connecting	A-83477-B	x	x	1						
	Includes										
30	BEARING	93968	x	x	1						
31	SCREW- Cap soc hd	69919	x	x	2						

NOTE 1: Fuel tank gasket 88042 and screw 89613 are still available for tanks that have not been permanently bonded.

NOTE 2: Muffler A-59082-A has been superseded by A-94219-A muffler. Replacement studs 59085-B, Baffle 69050, caps A-83346-1, and spark arrester DA-82500-A are still available.

XL-12/SXL-AO

FIGURE 6



NO.	DESCRIPTION	PART NO.	XL-12	SXL-AO	QTY.	NO.	DESCRIPTION	PART NO.	XL-12	SXL-AO	QTY.
1	GASKET- Spacer	59274	x	x	1	23	SPRING- Throttle latch	55405	x	x	1
2	SPACER	59718	x	x	1	24	COVER- Throttle handle	A-59213-1A	x	x	1
3	RETAINER- Reed valve	63290-A	x	x	1		Includes				
4	SEAT- Reed valve	63263	x	x	1		Bushing- Pin (Not shown)	67752	x	x	1
5	VALVE- Reed	59678-B	x	x	4	25	SCREW- Pan 8-32 x 1/2	60560	x	x	2
6	GASKET- Carburetor	59722	x	x	1	26	TRIGGER- Throttle	58859	x	x	1
7	LINE- Fuel 9 1/4" (Note 1)	70310-37	x	x	1	27	RING- Retaining	58409	x	x	1
8	CARBURETOR- Walbro (SDC-62)	A-66371-B	x	x	1	28	THROTTLE HANDLE	A-93926	x	x	1
	CARBURETOR- Tillotson (HS-179-B)	A-66363-B6	x	x	1		Includes				
	CARBURETOR- Zama (#20-20)	A-94953	x	x	1	29	WASHER- Felt	63290	x	x	1
9	GROMMET	66279	x	x	1	30	PIN- Cotter	65301	x	x	1
10	PIN- Cotter	66324	x	x	1	31	BOOT- Throttle rod	67634	x	x	1
11	COVER- Air filter	65773-12	x	x	1	32	PLUG	63303	x	x	1
12	NUT- Air filter cover	A-66272	x	x	1	33	SHIELD- Spark plug	63206	x	x	1
13	RING- Retaining	66319-A	x	x	1	34	PIN	94142	x	x	1
14	ELEMENT- Air filter	63689-A	x	x	1	35	VALVE- Check	A-59011	x	x	1
15	BRACKET- Mounting	A-59822-B	x	x	1	36	SCREW- Idle	63902-B	x	x	1
16	ROD- Choke	66130-1	x	x	1	37	GROMMET- Hi-Lo	59770	x	x	1
17	GROMMET	66362	x	x	1	38	PLUNGER- Spring	A-63783	x	x	1
18	ROD- Throttle	59763	x	x	1		Includes				
19	SCREW- Hex 12-24 x 7/8	60891	x	x	5	39	SPRING- Compression	59293	x	x	1
20	WASHER- Lock #10	63046	x	x	2	40	"O" RING	74386	x	x	1
21	SCREW- Hex 10-32 x 2 11/16	60921	x	x	2	41	VALVE- Check	A-59818	x		1
22	PIN- Throttle latch	65671	x	x	1	42	LABEL- Homeite	96479	x	x	1

NOTE 1: The 63745-A fuel line is available for A-58797-C (HS-40) Carburetor.

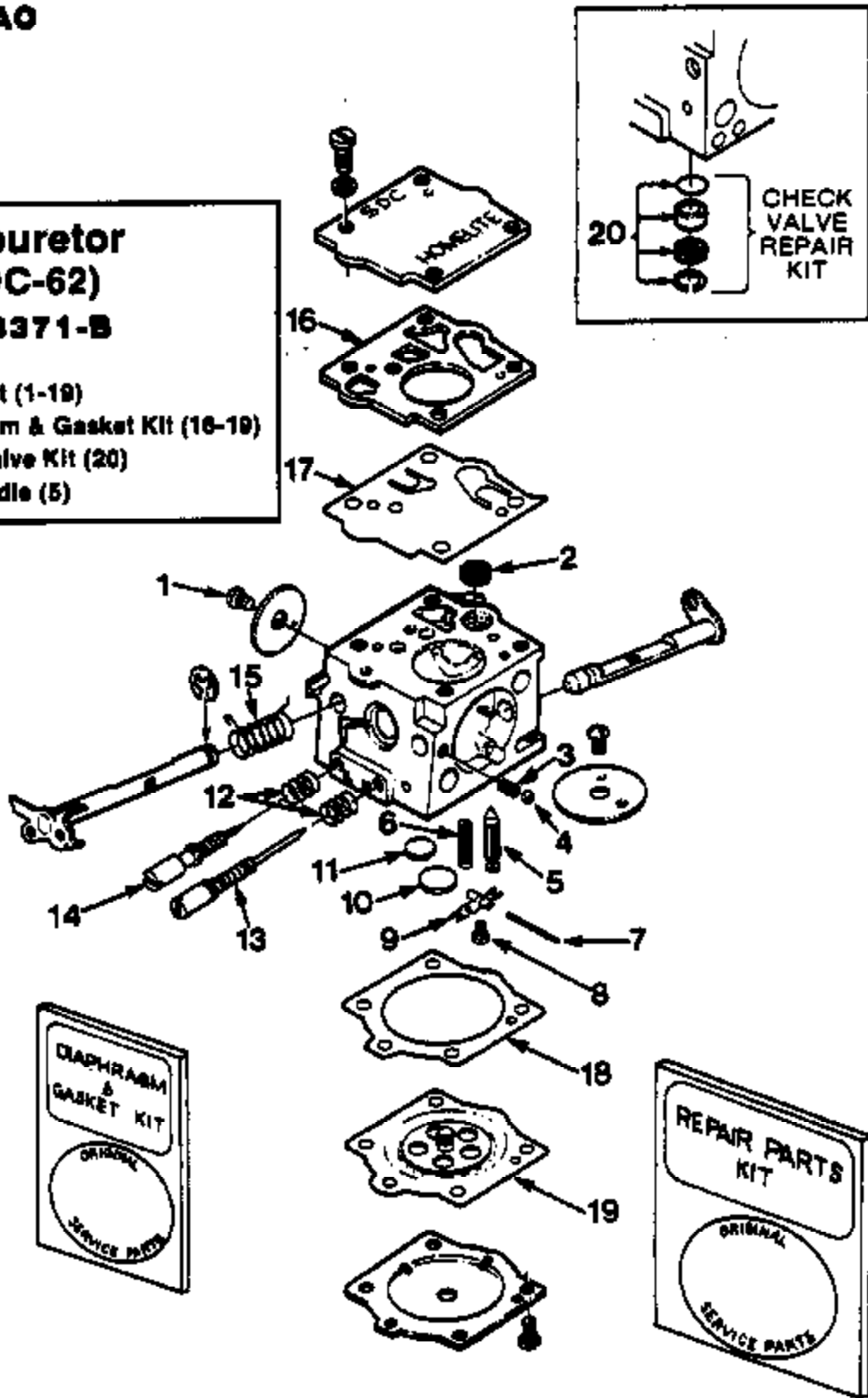
ALWAYS FURNISH MODEL AND SERIAL NUMBERS WHEN ORDERING PARTS

XL-12/SXL-A0

FIGURE 7

**Carburetor
(SDC-62)
A-68371-B**

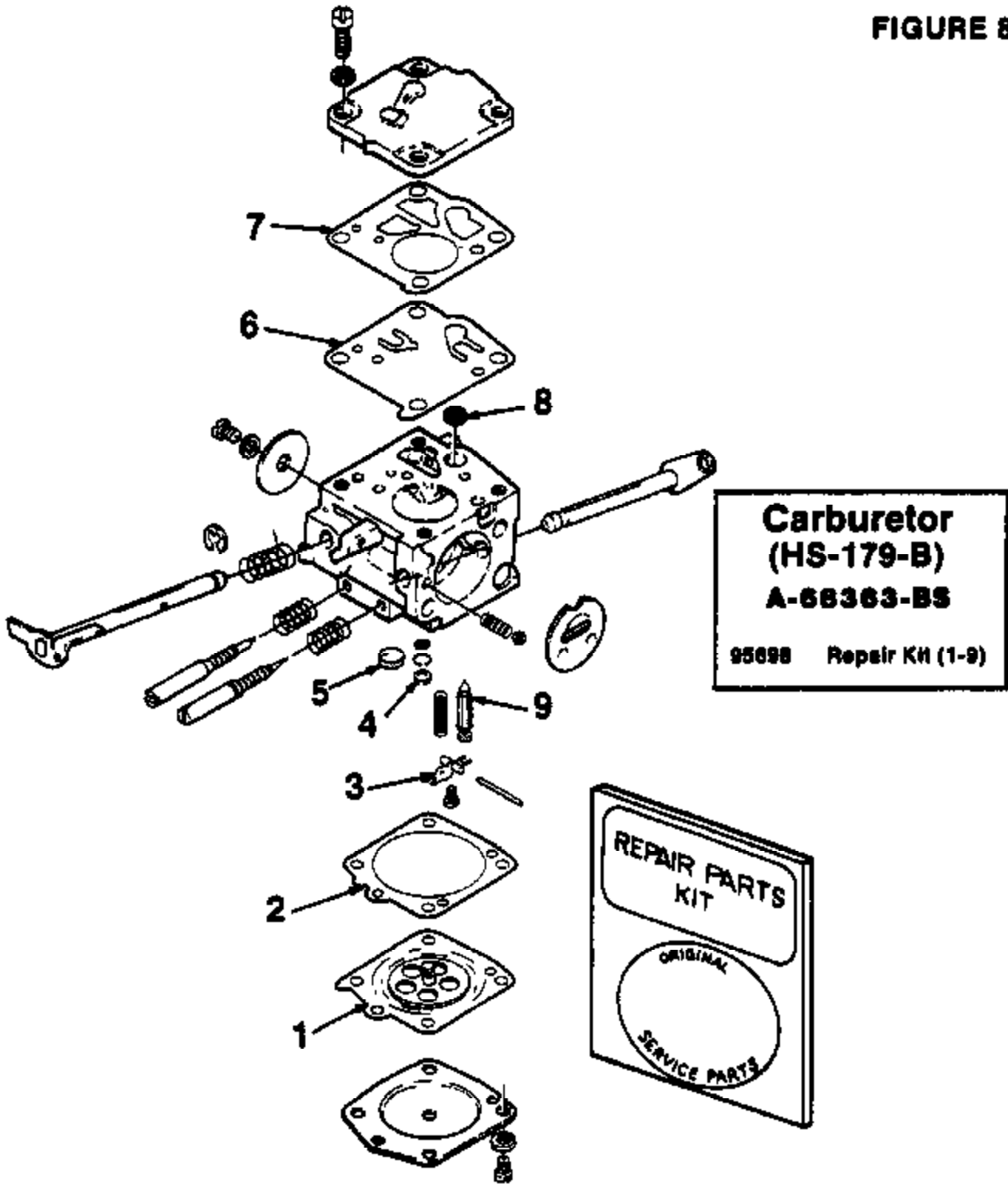
67020 Repair Kit (1-19)
70811 Diaphragm & Gasket Kit (16-19)
93810-A Check Valve Kit (20)
64229 Inlet Needle (5)



ALWAYS FURNISH MODEL AND SERIAL NUMBERS WHEN ORDERING PARTS.

XL-12/SXL-A0

FIGURE 8



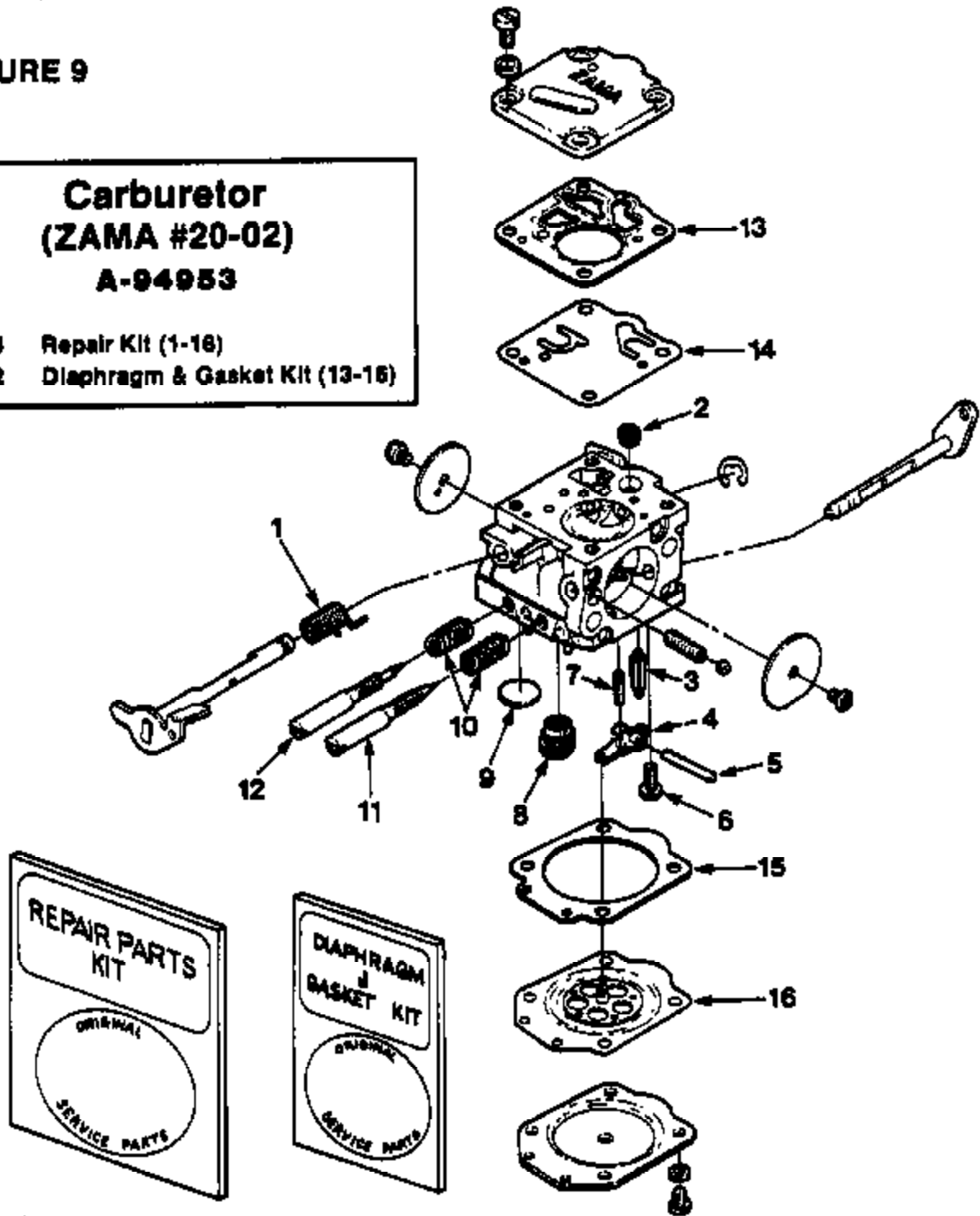
ALWAYS FURNISH MODEL AND SERIAL NUMBERS WHEN ORDERING PARTS

XL-12/SXL-AO

FIGURE 9

**Carburetor
(ZAMA #20-02)
A-94953**

94954 Repair Kit (1-16)
94952 Diaphragm & Gasket Kit (13-16)



ALWAYS FURNISH MODEL AND SERIAL NUMBERS WHEN ORDERING PARTS

TOOLS FOR XL-12	
DESCRIPTION	PART NO.
PLIERS- Piston snap ring	22828
PLUG- Bearing assembly & disassembly	23786
PLUG- Bearing assembly & disassembly Drive & Crankcase	23787
PLUG- Seal assembly-drive & crankcase	23788
PLUG- Piston pin removal	A-23849
Includes: "O" RING	87800
FULLER- Magneto remover	A-24280
SLEEVE- Seal protecting-crankcase	23789
SLEEVE- Seal installation-drive and crankcase	23800
WRENCH- Hex socket screw (conn rod)	23828
WRENCH- Spanner to assembly & disassemble clutch	A-23834
Includes: PIN	23864
WRENCH- Socket	88851
SCREWDRIVER	24841
TOOL- Clutch removal (for clutch conversion kit)	A-17148

TOOLS FOR THE SXL-AO	
DESCRIPTION	PART NO.
ANVIL- Crankshaft	22846-4
COLLAR- Ball bearing installation	22820-1
DRIVER- Check valve (for SDC carburetor)	24173
JACKSCREW	A-23137
PLIERS- Piston snap ring	22828
PLUG- Bearing assembly connecting rod Drive & Crankcase	23786
PLUG- Seal assembly - drive & crankcase	23787
PLUG- Seal installation Drivecase assembly	23846
PLUG- Piston pin removal	A-23848
Includes: "O" RING	87800
FULLER- Magneto remover	A-24280
SLEEVE- Bearing & Shaft Installation	23884-A
SLEEVE- Bearing & Shaft Installation	23136-2A
SLEEVE- Seal protecting	23844
SLEEVE- Seal protecting crankcase	23788
SLEEVE- Seal installation drivecase	23843
SLEEVE- Seal installation drive & crankcase	23800
WRENCH- Hex socket screw (connecting rod)	23828
WRENCH- Spanner to assemble & disassemble clutch	A-23834
Includes: PIN	23864
WRENCH- Socket	88851
WRENCH- Inset	A-24322
SCREWDRIVER	24841
TOOL- Clutch removal (for clutch conversion kit)	A-17148
BIT- Driver forx 1/4" hex shank	24862-01
BIT- Driver forx 5/16" hex shank	24862-02

ACCESSORIES		XL-12	SXL-AO
DESCRIPTION	PART NO.		
CLUTCH- Conversion Kit (Lined)	A-88746	1	1
Includes:			
SHOE- Clutch	A-88832-A	2	3
SPIDER- Clutch	83639	3	3
SPRING- Clutch	83814-A	3	3
SPROCKET & DRUM	A-88486	1	1
THRUST WASHER	80843	1	1
THRUST WASHER	80860	1	1
THRUST WASHER	80864	1	1
KIT- Manual oil pump (Prior to s/n 50440501)	A-88888	1	
Includes:			
BUTTON	87289-1	1	
LINE- ON	A-88818	1	
Includes:			
GROMMET	88784	1	
VALVE- Check	A-88818	1	
FILTER- ON (Intake)	A-88804-A	1	
PLUNGER	A-87834-10	1	
Includes:			
"O" RING	74388	1	
"O" RING	88074	1	
SPRING	88283	1	
When this Kit is assembled to the unit, the unit will have a complete manual oil pump system.			
KIT- Hand guard	A-70816-A	1	
Includes:			
WASHER	88851-2	1	
WASHER	70788	1	
SLEEVE	70811	1	
SCREW- Machine flt hd.	70988	1	
SCREW	80948	1	
NUT	81228	1	
SCREW	82223	1	
DECAL	98980	1	
KIT- Hand Guard	A-70844-A	1	
WASHER	88861-2	1	
WASHER	70788	1	
SLEEVE	70811	1	
SCREW	80948	1	
NUT	81228	1	
KIT- Safe-T-Top (Standard)	QA-78780-A	1	1
Includes:			
SCREW	82325	1	1
CARRY CASE	88920	1	1
REEL- Starting rope (250 Ft.) #3	87084-1	1	1
KIT- Inset (for drivecase guide bar/cuts)	A-70370-A	1	
TUBING- Rubber 18 ft. (Fuel)	70310-88	1	1
TUBING- Rubber 18 ft. (Oil)	70308-88	1	1
THROTTLE HANDLE			
CONVERSION KIT (For the XL-12 single read system)	A-87853	1	

PAINT		XL-12	SXL-AO
DESCRIPTION	PART NO.		
LACQUER- Red	22478	1	1
LACQUER- Black	22772	1	1